

1710 - 609 GRANVILLE ST  
 PO BOX 10363  
 VANCOUVER BC  
 CANADA V7Y 1G5  
 (604) 683-7265 FAX 683-5306  
 BBS 683-7206

# George Cross News Letter

"Reliable Reporting"

WESTERN CANADIAN INVESTMENTS

COPYRIGHT  
 ALL REPRODUCTION  
 RIGHT RESERVED  
 PUBLISHED DAILY  
 SUBSCRIPTION RATE  
 \$315.00 PER YEAR

NO. 163 (1994)  
 AUGUST 25, 1994

NO. 163 (1994)  
 AUGUST 25, 1994

## BETHLEHEM RESOURCES CORP.

[BTH-V.T] 18,408,766 SHS.

## GOLDNEY RESOURCES INC.

[GNZ-V] 11,990,264 SHS.

GOLDSTREAM MINE DRILL RESULTS - Patrick McAndless, vice president, explorations, reports Bethlehem Resources Corp., operator, and 50/50 joint venture partner Goldnev Resources Inc. have reported results of the first three of a six-hole diamond drilling program to define the down-plunge extension of the known orebody at the Goldstream mine, 80 km north of Revelstoke, B.C. SEE MAP OVERLEAF P.1. The program is to test the grade and thickness of the orebody below the 350-metre elevation with a series of drillholes. Results for the first three holes drilled across the zone at the 300-metre level are as follows:

HOLE NO.	INTERVAL METRES	LENGTH METRES	COPPER %	ZINC %	DESCRIPT.
GS-94-1	351.83-358.49	6.26	1.319	0.84	HW D.Zone*
	358.49-361.36	2.70	2.001	2.89	Mass.Sul.
	351.83-361.36	8.96	1.525	1.46	Combined
GS-94-2	380.18-381.65	1.38	1.705	.31	HW D.Zone*
	381.65-387.45	5.45	5.290	3.93	Mass.Sul.
	380.18-387.45	6.83	4.566	3.20	Combined
GS-94-3	372.19-374.19	1.81	.764	.58	HW D.Zone*
	374.19-375.51	1.20	5.027	2.29	Mass.Sul.
	375.51-376.26	.68	1.884	.10	FW D.Zone+
	372.19-376.26	3.69	2.353	1.05	Combined

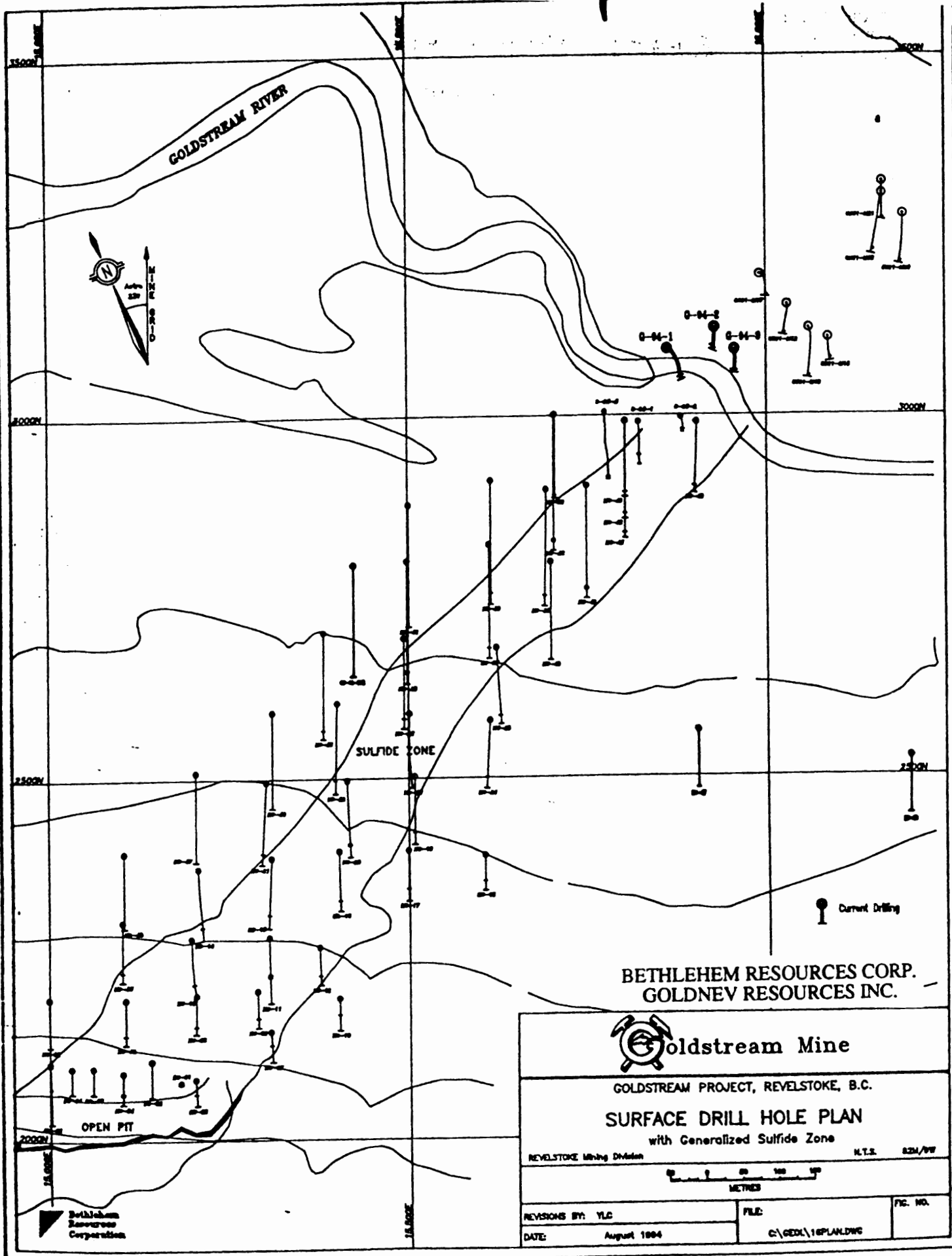
\* Hanging wall disseminated zone  
 + Footwall disseminated zone

The three holes show highly variable grades and widths comparable to the developed portion of the mine, and will move a

portion of the reserves below the 350 level currently classified as "geologically inferred" to a "drill indicated" category. The results of the drilling and the ongoing development of the Goldstream Mine will be used to update the reserves. Revised ore reserves calculations are expected by late September 1994. The drilling program is continuing and an additional three holes are currently planned.

Grid work and geochemical sampling has also been completed on the C-1 Zone, located about 10 km west of the Goldstream Mine. Some 26 km of line cutting and soil sampling have been carried out. Dependent on results from the analyses of the soil samples, follow-up work, including drilling, is planned in this zone. (SEE GCNL NO.131, 11Jul94, P.2 FOR PREVIOUS PROJECT INFORMATION)

82M 141  
 p. 1 of 2



BETHLEHEM RESOURCES CORP.  
GOLDNEV RESOURCES INC.



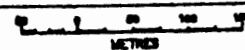
Goldstream Mine

GOLDSTREAM PROJECT, REVELSTOKE, B.C.

SURFACE DRILL HOLE PLAN  
with Generalized Sulfide Zone

REVELSTOKE Mining Division

N.T.S. BZM/97



REVISIONS BY: YLC

FILE:

FIG. NO.

DATE: August 1994

C:\GDD\16PLAN.DWG

Bethlehem  
Resources  
Corporation