

1710 - 609 GRANVILLE ST  
PO BOX 10363  
VANCOUVER BC  
CANADA V7Y 1G5  
(604) 683-7265 FAX 683-5306

# **George Cross News Letter**

**"Reliable Reporting"**

WESTERN CANADIAN INVESTMENTS

COPYRIGHT  
ALL REPRODUCTION  
RIGHTS RESERVED  
PUBLISHED DAILY  
SUBSCRIPTION RATE  
\$350.00 + GST

NO. 172 (2000)  
SEPTEMBER 8, 2000

NO. 172 (2000)  
SEPTEMBER 8, 2000

## **INT'L WAYSIDE GOLD MINES LTD.**

[IWA-CDNX] 40,757,998 SHS.

FURTHER BONANZA LEDGE ASSAYS - J. Frank Callaghan,  
president, reports  
International Wayside Gold Mines Ltd. has received assays for a  
further three drill holes testing the Bonanza Ledge zone at the 100%  
optioned Cariboo Gold Project at Wells, about 100 km east of  
Quesnel in the Cariboo region of central BC.

Drill hole BC2K-32 was drilled on section 20140E to test the  
depth extension of mineralization encountered in drill holes BC2K-  
3, 4 and 12. SEE DRILL HOLE/ASSAY MAPS OVERLEAF P.1. Drill  
hole BC2K-32 intersected gold values in muscovite-pyrite  
alteration. SEE ASSAYS OVERLEAF P.2.

Drill holes BC2K- 31 and 30 tested section 20206E upslope  
(northeast) of drill holes BC2K 23-25. The BC Vein was not  
intersected by these holes, although small faults were intersected in  
the section above mineralization that may be the BC Vein structure.  
SEE ASSAYS OVERLEAF P.2. Holes BC2K-30 and 31 demonstrate  
the continuity of mineralization with significant gold values  
through this portion of the Bonanza Ledge. Drilling continues to  
test the extension from the Bonanza Ledge zone to the southeast of  
the known mineralization. Drill hole BC2K-36 is in progress. (SEE  
GCNL NO.157, 16Aug2000, P.1 FOR PREVIOUS CARIBOO GOLD  
PROJECT INFORMATION)

93H 19

P. 10F3

**INT'L WAYSIDE GOLD MINES LTD.**  
**CARIBOO GOLD PROJECT**  
**WELLS/BARKERVILLE REGION, CENTRAL BC**  
**BONANZA LEDGE DRILLING RESULTS**

NO. 172 (2000)  
SEPTEMBER 8, 2000

**BC2K-32 drilled from Station 2759N/20140E on azimuth 222° at -55° inclination**

From 117.1 to 140 ft - 22.9 ft of 0.09 oz/ton gold (7.0 m of 3.2 g/t gold)

From 197.0 to 345 ft - 148 ft of 0.33 oz/ton gold (45.1 m of 11.2 g/t gold)

including 4 ft of 0.6 oz/ton (1.2 m of 20.4 g/t) from 200 to 204 ft  
including 11 ft of 1.15 oz/ton (3.4 m of 39.4 g/t) from 234 to 245 ft  
including 5.5 ft of 0.95 oz/ton (1.7 m of 32.6 g/t) from 255 to 260.5 ft  
including 10 ft of 0.67 oz/ton (3.1 m of 23.0 g/t) from 335 to 345 ft.

**BC2K-31 drilled from Station 2801N/20206E on azimuth 223° at -65° inclination**

From 190.8 to 195 ft - 4.2 ft of 0.07 oz/ton gold (1.3 m of 2.3 g/t gold)

From 199.3 to 280 ft - 80.7 ft of 0.29 oz/ton gold (24.6 m of 9.9 g/t gold)

including 15.4 ft of 0.77 oz/ton (4.7 m of 26.4 g/t) from 210.5 to 225.9 ft  
including 5.0 ft of 0.67 oz/ton (1.5 m of 23.1 g/t) from 250 to 255 ft  
including 10.0 ft of 0.25 oz/ton (3.1 m of 8.4 g/t) from 260 -270 ft

From 330 to 345 ft - 15 ft of 0.07 oz/ton gold (4.6 m of 2.3 g/t gold)

**BC2K-30 drilled from Station 2799N/20206E on azimuth 222° at -50° inclination**

From 160 to 202 ft - 42 ft of 0.27 oz/ton gold (12.8 m of 9.1 g/t gold)

including 9.5 ft of 0.54 oz/ton (2.9 m of 18.5 g/t) from 160-169.5 ft  
including 5.5 ft of 0.52 oz/ton (1.7 m of 17.9 g/t) from 192-197.5 ft

From 255 to 280 ft - 25 ft of 0.05 oz/ton (7.6 m of 1.6 g/t gold)

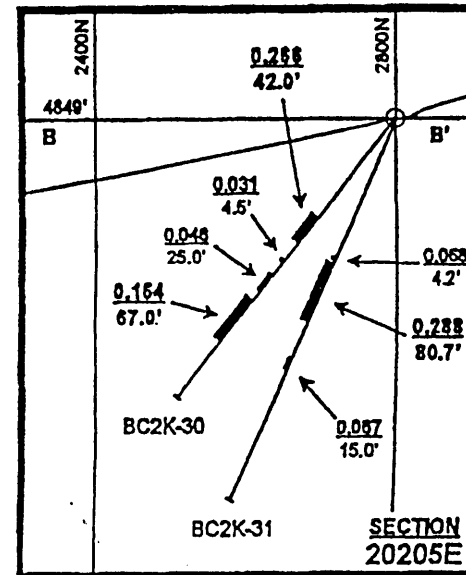
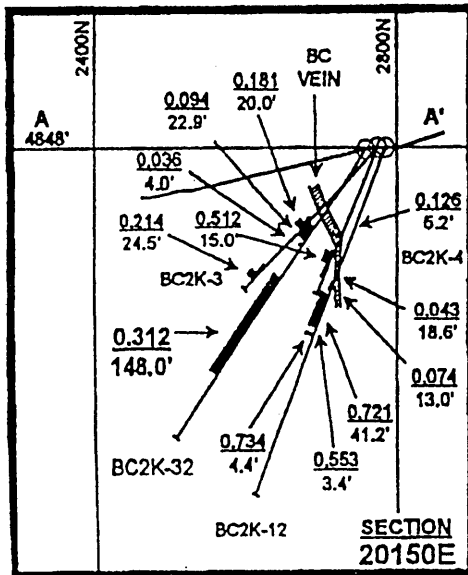
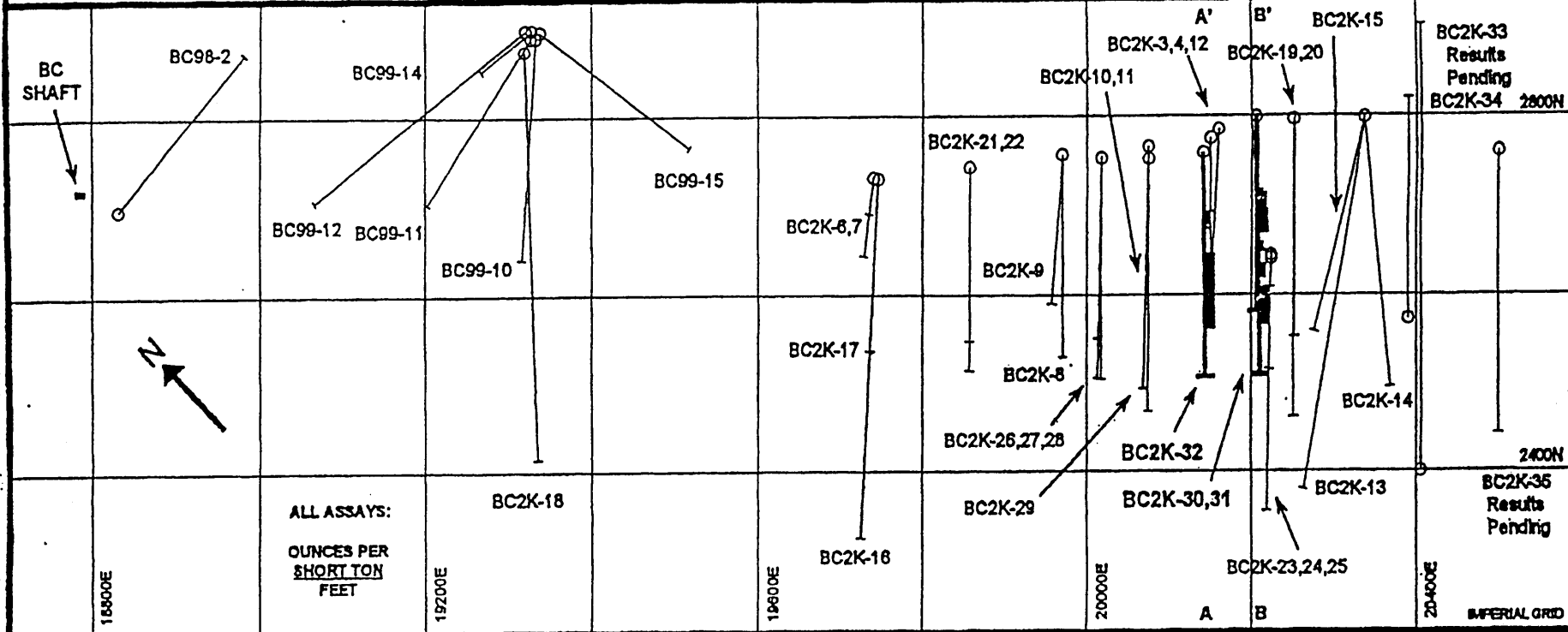
From 295 to 362 ft - 67 ft of 0.15 oz/ton (20.4 m of 5.3 g/t gold)

including 6.5 ft of 0.28 oz/ton (2.0 m of 9.5 g/t) from 320-326.5 ft  
including 7.5 ft of 0.52 oz/ton (2.3 m of 17.7 g/t) from 334.5-342 ft

NO. 172 (2000)  
SEPTEMBER 8, 2000

93H 19

p. 2 of 3



WELLS/BARKERVILLE REGION, CENTRAL BC