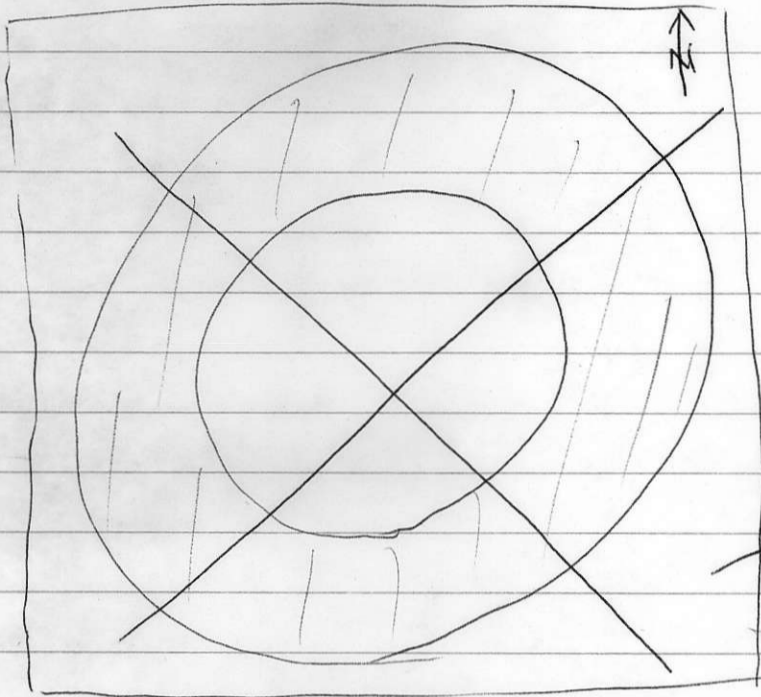
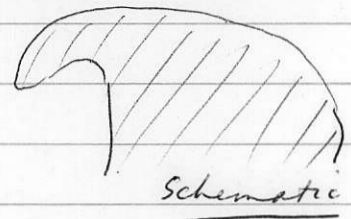
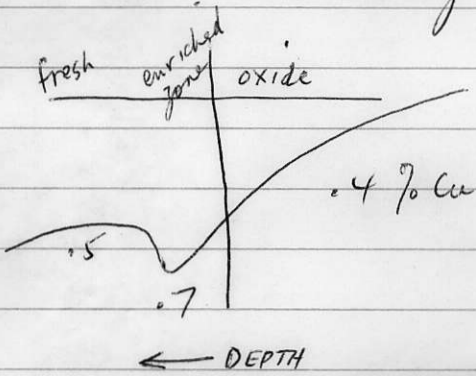


896313

Conversation with
Myron Osatenko Dec 1/72

Valley Copper

Qtz core has a tail



They did their sections
much as I did

area covered
*NONE OF THE RIM HOLES WERE
STUDIED.

Thin section work - several hundred done

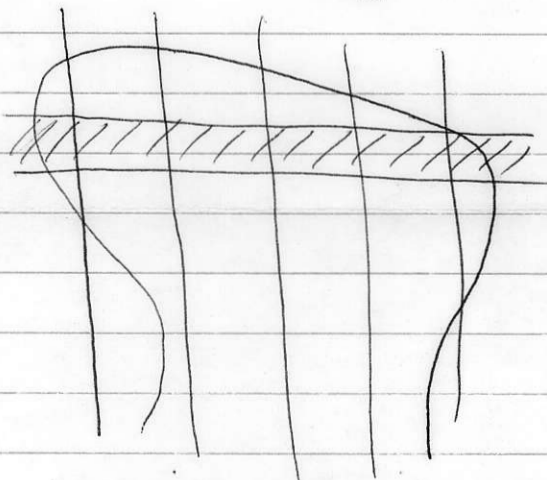
CLAYS Kaolinite in ring around core

Pyrite halo - there but very irregular in outline +
pyrite max 2%

- pyrite replaced along cracks by bn + cpy
+ sphalerite occasionally



detailed work
ie gypsum distn
etc.



work done on samples
at 100' intervals or
on one hundred foot composite

Sulphide ratios - composite sample concentrated by using
Diatamethane (Methylene Iodide) [HEAVY LIQUID] then polished
section (much) mount made by immersing the conc. in
epoxy. Sulphide %'s from pt counts.