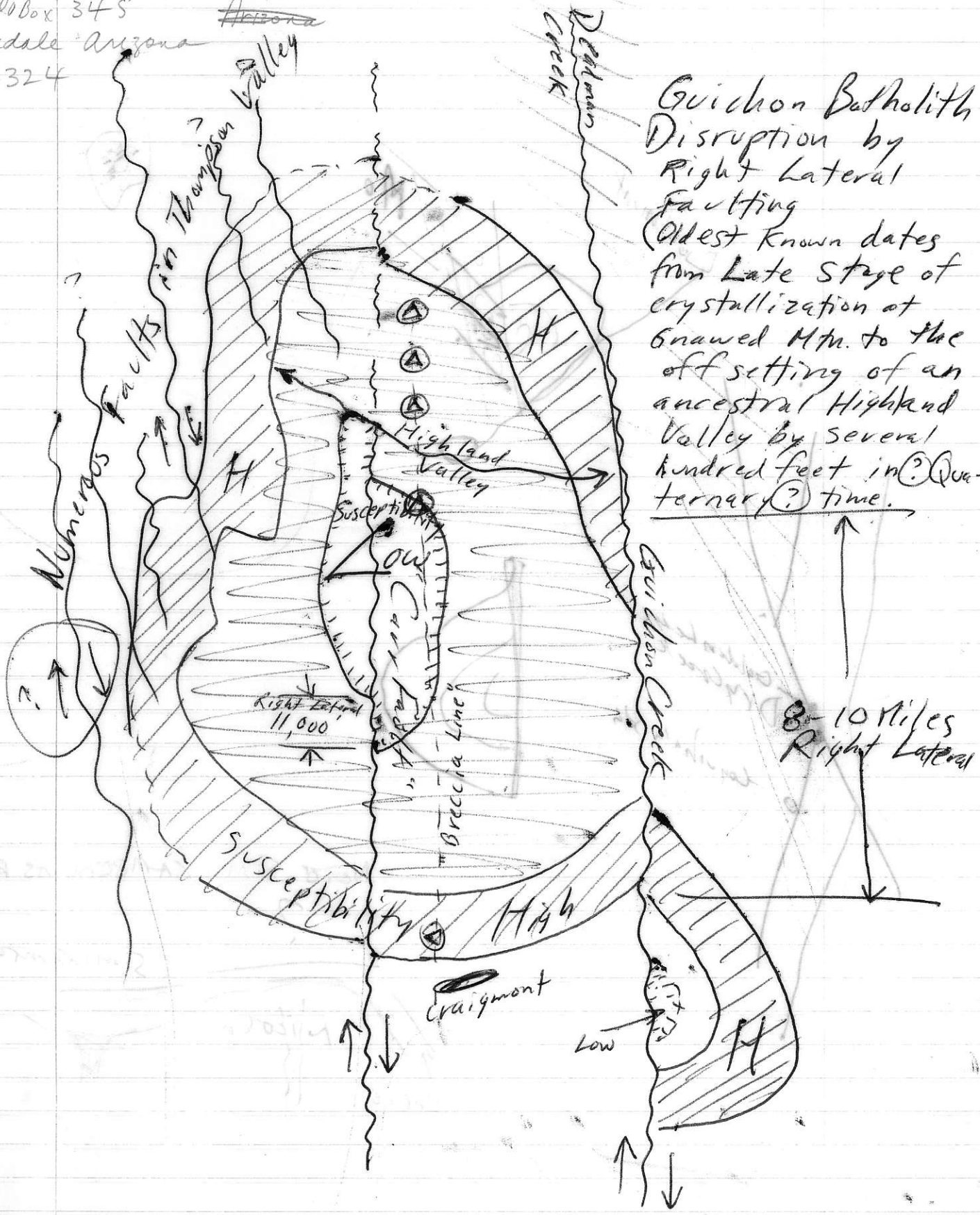


A. Sutherland Brown

From Paul A. Lindberg, Anacosta Co. Aug 23, 1972

PO Box 345
Clarkdale, Arizona
86324

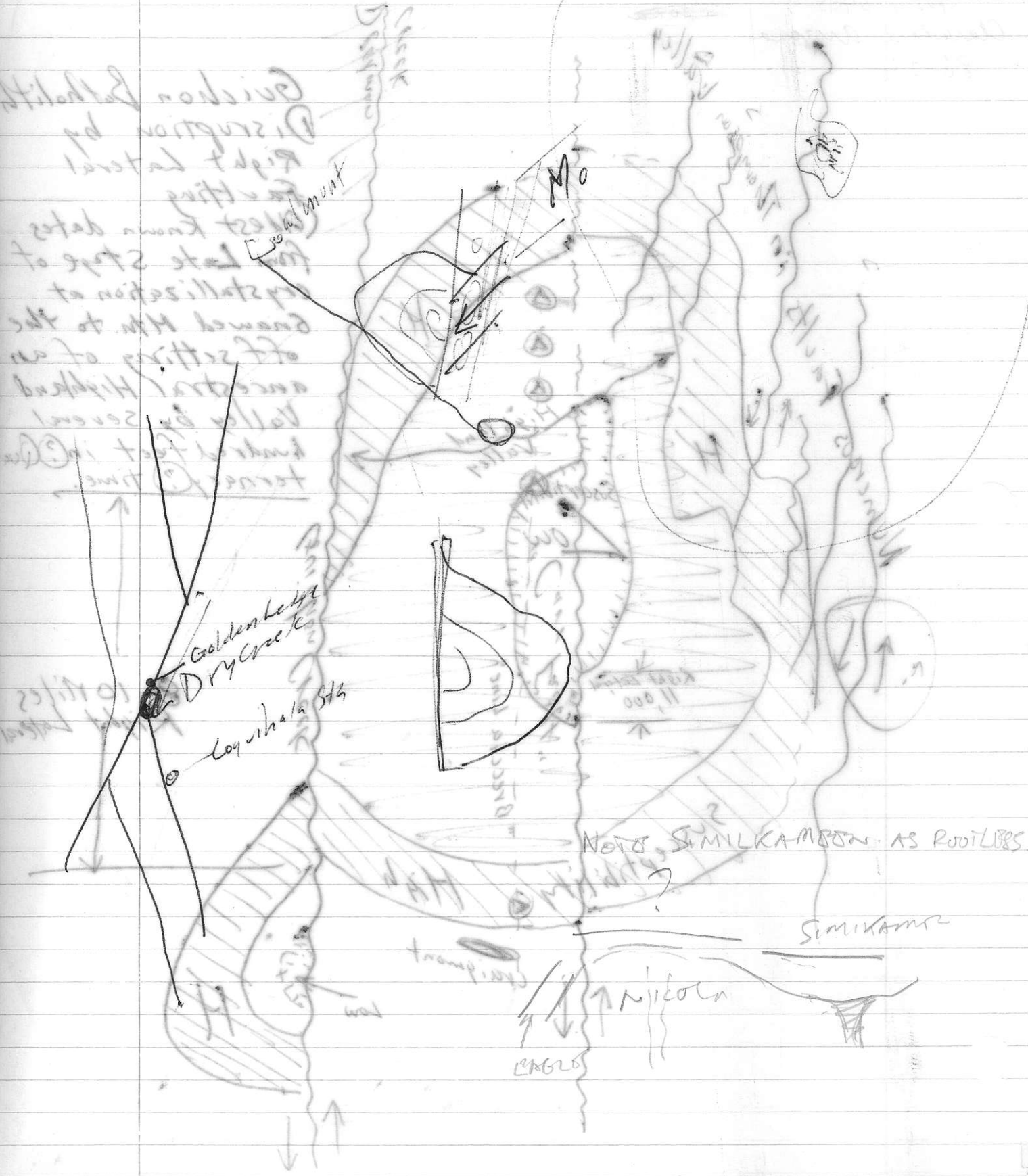


Guichon Batholith
 Disruption by
 Right Lateral
 Faulting
 (Oldest Known dates
 from Late Stage of
 crystallization at
 Gnaomed Mtn. to the
 off setting of an
 ancestral Highland
 Valley by several
 hundred feet in
 Quaternary time.)

8-10 Miles
 Right Lateral

898108

898108 - Bou on. Guicera Basin



Guicera Basin
 Disruption by
 Right lateral
 faulting
 (best known dates
 for late stage of
 crystallization at
 around 11.0 to the
 off setting of an
 ancestral Highland
 valley by several
 hundred feet in
 former times

Golden Ledge
 Dry Core
 Loguichala Sls

Neto Simikambe AS Root LBS

Simikambe

Nylocn

11,000