



PRIME CAPITAL CORPORATION

Snip
887752







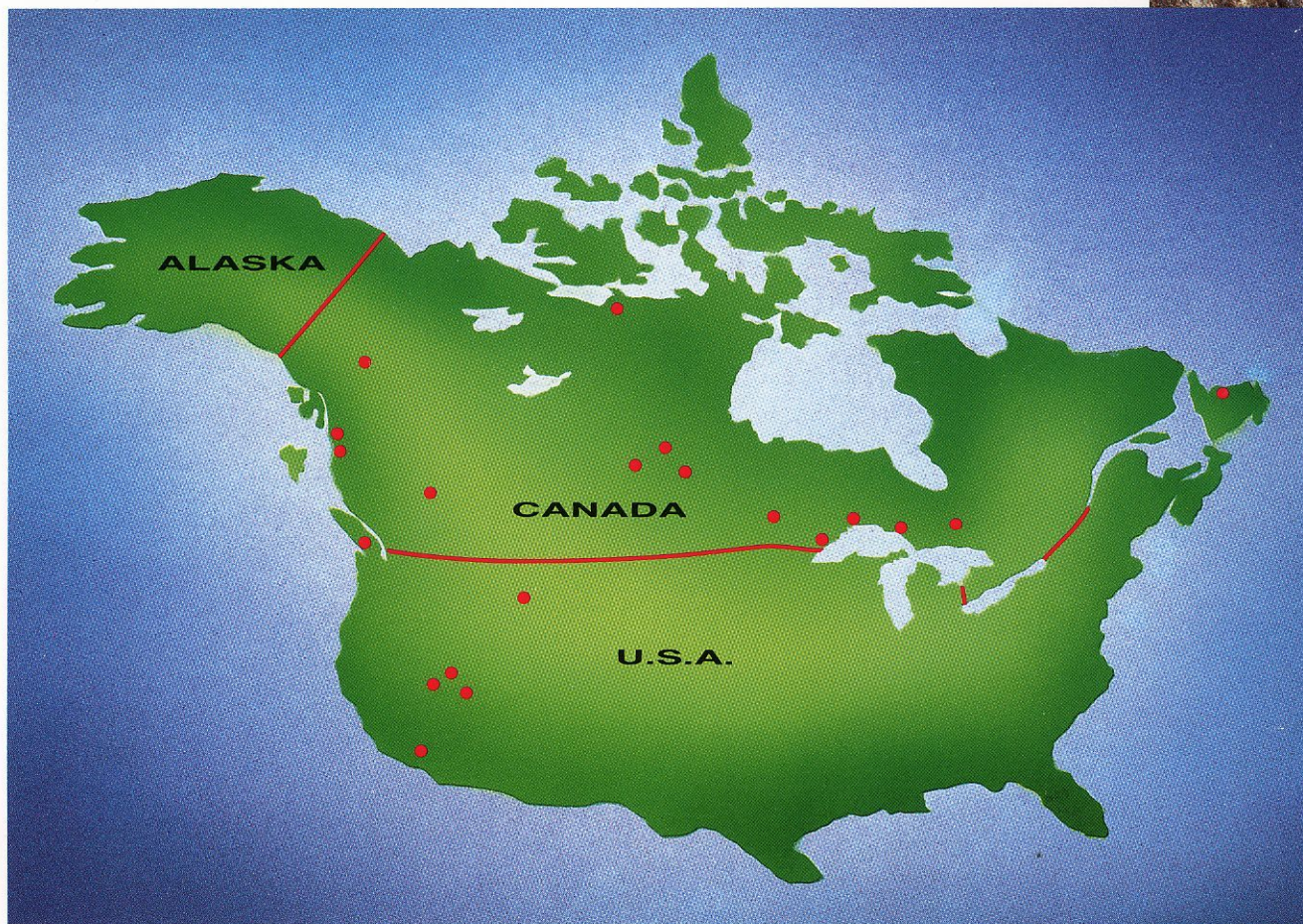
**PRIME
CAPITAL
CORPORATION**



Prime Capital Corporation is a mining finance house holding equity interests in many natural resource companies with properties in various stages of exploration and development. Prime is in the business of providing a broad range of services to companies in the North American mining industry with particular emphasis on those activities traditionally associated with a mining finance house. These services have included the provision of administrative and accounting services, technical consulting and direction in connection with resource exploration and development programs and arranging financing for or providing equity financing to existing mining companies.

Prime provides overall corporate and financing strategy to many natural resource companies. The financing has taken a variety of forms ranging from assisting in obtaining outside direct financing, to passive direct investment, through to substantial investment entailing the acquisition of control. Prime intends to build its asset base to include controlling interest in numerous natural resource properties ranging from producing mines to promising exploration projects.

Prime provides a variety of financial consulting services on a fee basis, such as procurement of both equity and loan financing and advising and assisting with respect to a variety of corporate re-organizations including mergers, acquisitions and takeovers.



Through Prime Management Ltd., Prime provides administrative, accounting and a variety of support services to over 50 public companies. Through Prime Explorations Ltd., Prime manages their exploration and development programs being conducted on natural resource properties throughout North America. Prime Explorations Ltd. is managing or consulting on approximately \$30,000,000 of exploration programs in 1988.

PEZGOLD RESOURCE CORPORATION





Prime holds approximately 30% of the issued common shares of Pezgold Resource Corporation ("Pezgold"). Pezgold holds interests in mineral properties located in the Carlin Gold Belt, Nevada, U.S.A., Baie Verte area of Newfoundland and the newly emerging Iskut River Gold Camp.

Pezgold is planning to merge with Androne Resources Ltd. to result in an emerging major exploration company having substantial liquid assets, access to flow-through funds and eight promising exploration properties, all of which are under active exploration.







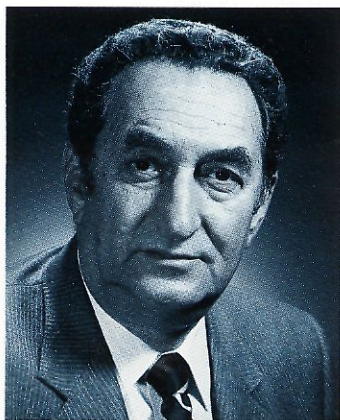
Delaware Resources Corp. ("Delaware"), with its partner, Cominco Ltd., is bringing into production a major gold mine in the emerging Iskut River Gold Camp in British Columbia. Delaware has developed 1.2 million tons of ore grading 0.7 ounces of gold per ton and is currently undertaking a substantial underground exploration and development program designed to markedly increase reserves.

Through Prime's holdings of 53.4% of Colossus Resource Equities Inc. ("Colossus"), Prime indirectly participates in Colossus' 50.3% interest in Delaware.

Prime's indirect holdings of Delaware exemplify Prime's stated objective of acquiring gold production.

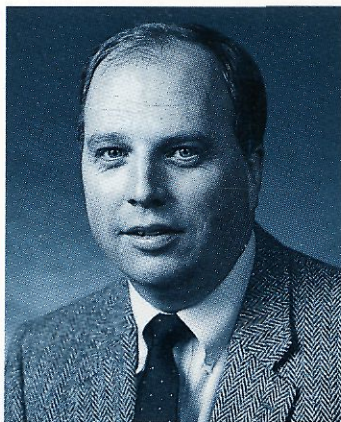


Senior Management



Murray Pezim

Mr. Pezim is Chairman of the Board of Prime Capital Corporation, is a Financier and a Director and Officer of numerous reporting companies including Corona Corporation, Delaware Resources Corp. and Colossus Resource Equities Inc.



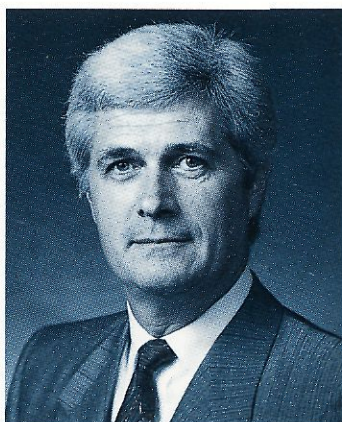
John Ivany

Mr. Ivany is a Director and the President and Chief Executive Officer of Prime Capital Corporation and was Vice-President and General Counsel of Noranda Inc. from 1972 to November, 1987. He was President and Chief Executive Officer of Hemlo Gold Mines Inc. from February, 1987 to November, 1987. Mr. Ivany is a Director of numerous reporting companies including Corona Corporation, Delaware Resources Corp. and Colossus Resource Equities Inc.



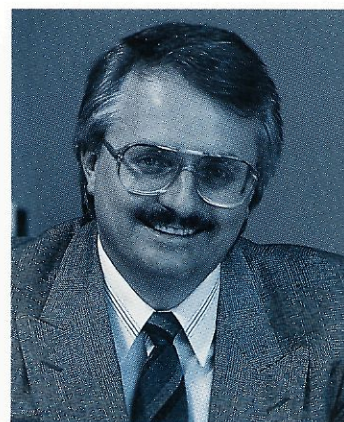
Arthur Clemis

Mr. Clemis is a Director and the Executive Vice-President of Prime Capital Corporation, is a Business Executive and a Director of numerous reporting companies including Golden Nevada Resources Inc., Destiny Resources Ltd., and Colossus Resource Equities Inc.



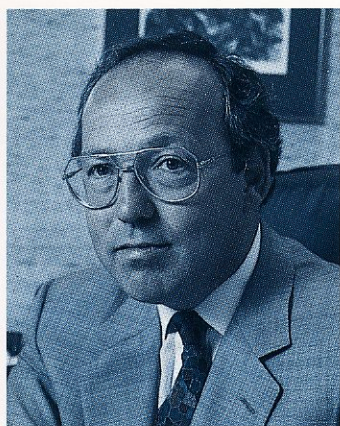
Robert Gayton

Mr. Gayton, Chief Financial Officer of Prime Capital Corporation, was Vice-President, Finance and Administration, of Noramco Mining Corporation from April, 1987 to March, 1988. He was a Partner at Peat, Marwick, Mitchell and Co., Chartered Accountants, from 1976 to 1987. He is an Officer of numerous reporting companies including Delaware Resources Corp. and Colossus Resource Equities Inc.



Chet Idzizek

Mr. Idzizek, President of Prime Capital's subsidiary, Prime Explorations Ltd., is a geologist who was formerly President of Galveston Explorations Ltd. in 1987, manager of new projects for Gold Fields Canadian Mining Ltd. from 1984 to 1987, and exploration manager for New Jersey Zinc Exploration Co. (Canada) Ltd. from 1979 to 1983. He is a Director and Officer of numerous reporting companies and Vice-President of Explorations of Delaware Resources Corp.



Lawrence Page

Mr. Page is a Director and the Senior Vice-President and Secretary of Prime Capital Corporation. He is a Partner at the law firm of Worrall Scott and Page, Vancouver, B.C. He is a Director of numerous reporting companies including Corona Corporation, Golden Nevada Resources Inc., and Colossus Resource Equities Inc.



Henry Ewanchuk

Mr. Ewanchuk, Senior Vice-President of Operations of Prime Capital Corporation, is President and Chief Executive Officer of Bethlehem Resources Corporation. He is Vice-President of Operations of Delaware Resources Corp. and a director of numerous reporting companies.

Directors

Murray Pezim	John Ivany
Arthur Clemiss	Lawrence Page
Peter Brown	John Ing
Ned Goodman	Norman B. Keevil, Jr.
Myron Gottlieb	Alan Lenczner
John Harvey	Jim Pattison
Timothy J.D. Hoare	Peter Steen

Officers

Murray Pezim
Chairman of the Board

John Ivany
President and Chief Executive Officer

Arthur Clemiss
Executive Vice-President

Lawrence Page
Senior Vice-President and Secretary

Robert Gayton
Chief Financial Officer

Henry Ewanchuk
Senior Vice-President, Operations

Chet Idziszek
President of Prime Explorations Ltd.



PRIME CAPITAL CORPORATION

15th Floor - 609 Granville St.
P.O. Box 10108
Vancouver, B.C., Canada V7Y 1C6
Telephone: (604) 687-3303
Telecopier: (604) 681-2578
Telex: 04-508542
Toll free U.S. 1-800-663-8068



