

887485
SIB

708-740-1410
June 103

VALIDATING MULTIPLE GEOINFORMATICS TARGETS...\$3M FIELD PROGRAM FOR 2003

HERITAGE EXPLORATIONS LTD

TSXv SYMBOL: HXL

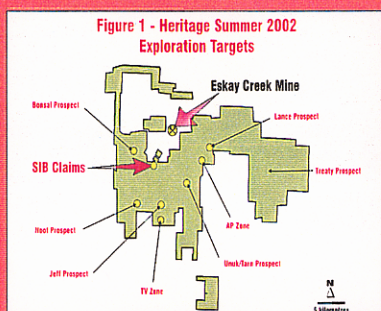
52 Week Range: \$0.90 - \$0.03

SHARES OUTSTANDING: 23,681,908

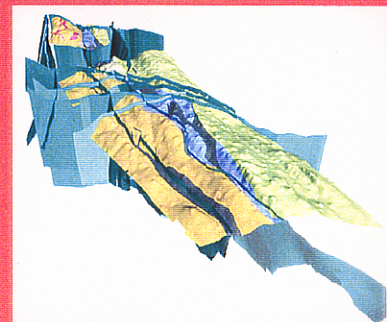


ESKAY CREEK GOLD PROJECT - BRITISH COLUMBIA

2002 - CAMP CONSOLIDATION AND GEOINFORMATICS MODELLING

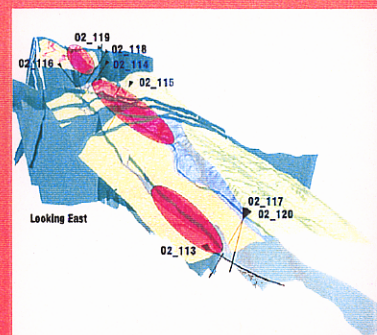


- Camp consolidation
- Geoinformatics Technology Platform produces 3D databases and 3D models
- Targets and corridors defined
- Summer 2002 field validation and drill program (8 drill holes)



2002 SUMMER HIGHLIGHTS

- Hole 2-113 - 38.4 ft at 0.57 oz/ton gold and 46 oz/ton silver including 23 ft @ 0.868 oz/ton of gold and 75 oz/ton silver.
- Hole 2-115 - 4.60 ft at 0.24 oz/ton gold and 0.49 oz/ton at the Battleship Knoll
- Two new gold anomalies along the eastern side of the SIB Claims, approx. 1 km east of the Lulu Zone & Battleship Knoll.
- Fragmented land position and numerous disparate geological databases electronically captured on to one database.
- Consolidated a large land position of 47,350 ha (117,000 acres)
- Geoinformatics Technology Platform implemented and model validated
- Identified nine target areas



2003 SUMMER FOLLOW-UP PROGRAM

- Diamond drilling of Geoinformatics targets
- Follow-up drilling of two large geochemical anomalies
- Further drilling at Lulu



ST ANDREW GOLDFIELDS LTD GROUP OF COMPANIES

Contact: Glenn Laing or Victoria Vargas

Suite 212, 1540 Cornwall Road Oakville Ontario L6J 7W5

Tel: 905 815 9855 Fax: 905 815 9437

Email: glaing@heritageexploration.com Website: <http://www.heritageexploration.com>

Technology Based Exploration

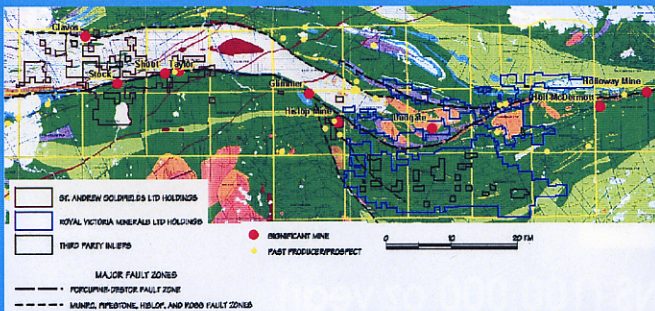
GOAL TO TURN ESKAY CREEK INTO A MULTI DEPOSIT MINING DISTRICT

HIGH QUALITY LAND HOLDINGS IN PROSPECTIVE AREAS - CAMP CONSOLIDATION

TGS → Heritage
June 103

ST ANDREW GOLDFIELDS LTD WORLD CLASS EXPLORATION PROJECTS

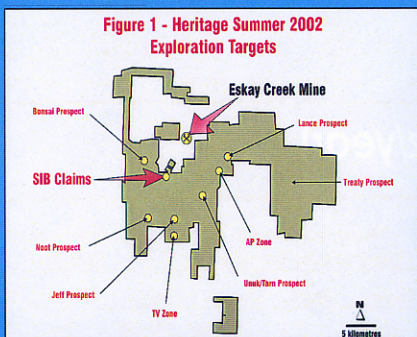
Timmins



- 176,000 acres of exploration properties
- Winter 2003 drill program
- 30,000 line kms of high resolution airborne magnetic surveying covering more than 50 km of Destor and Pipestone gold bearing corridors
- Over 60 targets generated

- Property consolidation focused across the Destor and Pipestone gold bearing fault systems as well as newly defined structures identified from Geoinformatics Modelling.

Eskay Creek



- Controls 117,000 acres of exploration properties in the vicinity of Eskay Creek Mine
- Summer 2003 drill program to test 9 targets

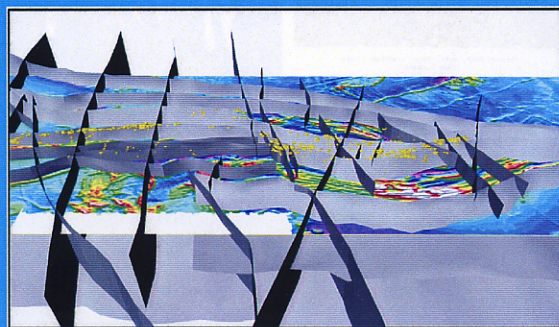
- Camp consolidation
- Applied Geoinformatics Process to produced 3D databases and 3D models
- Summer 2002 Exploration Program to validate and test models

Geoinformatics - Technology Based Exploration

- Formed out of Australian Fractal Graphics (Winner of the Goldcorp Challenge) and St Andrew Goldfields Ltd
- Technology based exploration utilizing "Geoinformatics Process" and proprietary software to provide a "Practical Process" of data capture, validation and interpretation.
- Offices in Toronto, Vancouver (Canada) and Perth (Australia)

Website: <http://www.standrewgoldfields.com>

Technology Based Exploration



ST ANDREW - CONSOLIDATING WORLD CLASS GOLD CAMPS

TECHNOLOGY DRIVEN EXPLORATION LEADS THROUGH GEOINFORMATICS METHODS

ONE OF THE LARGEST LAND HOLDERS IN TIMMINS AND ESKAY CREEK

ST ANDREW GOLDFIELDS LTD

TSX Symbol: SAS

Shares outstanding: 113,231,808
Shares Fully Diluted: 213,129,832
52 Week Range: \$0.40 - \$0.13

Long Term Debt: Nil
Working Capital: \$2.5 million
Financial Year End: Dec 31.

Operations at a Glance

ST ANDREW.
Reaching 135,000 oz
production within 3 years

Nixon Fork Mine
Resource 184,216 Oz

Clavos Mine
Resource 321,000 Oz

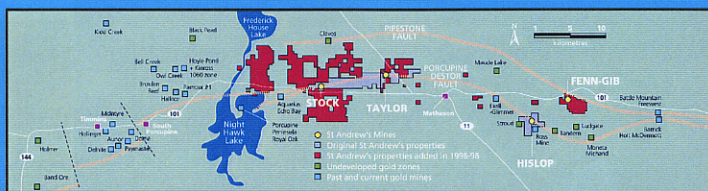
Taylor Mine
Resource 604,000 Oz

Stock Mine
Resource 14,000 Oz



NEAR TERM PRODUCTION - TIMMINS (100,000 oz/year)

- Stock Gold Complex capable of producing 100,000 at \$210 per ounce within 3 years
- Fully permitted 1300 tpd Gold Mill
- Four deposits totalling +1 million ounces
- Capex to start production C\$12 million
- Technology based Geoinformatics modelling and targeting provides exploration blue sky and long term growth potential



Deposit	Measured Tonnes (t)	Grade (g/t)	Ounces (oz)	Indicated Tonnes (t)	Grade (g/t)	Ounces (oz)	Inferred Tonnes (t)	Grade (g/t)	Ounces (oz)
Hisplop	108,000	3.0	10,000	212,000	5.1	37,000	118,000	12.0	48,000
Taylor				1,892,000	7.6	459,000	569,000	7.9	145,000
Clavos				757,000	7.6	185,000	452,000	9.4	136,000
Stock	23,600	9.2	7,000	19,000	6.5	4,000	14,500	6.4	3,000
Total	131,600	4.0	17,000	2,870,000	7.4	685,000	1,153,500	9.0	332,000

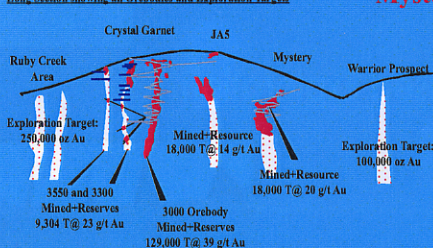
NEAR TERM PRODUCTION - ALASKA (45,000 oz/year)

- Kuskokwim-Tintina gold belt of Yukon-Alaska. (Near Donlin Creek Gold Project)
- 140 tpd gold mill, airstrip, 50 man camp, generators and underground infrastructure
- Capex to start production is US\$7.5 million
- Capable of producing 45,000 oz/year (1 oz/ton)
- Exploration potential for large low grade gold deposit similar to Fort Knox

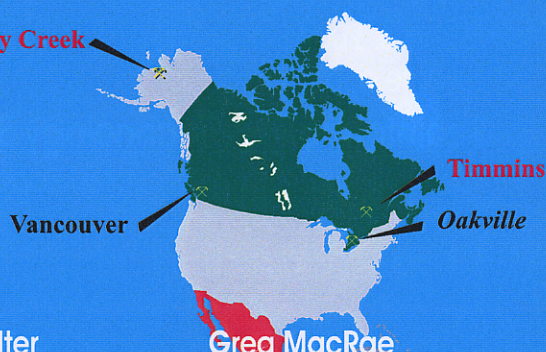
*Proven/Probable Reserves Remaining			*Measured/Indicated Sub-Economic Resource			Possible (Inferred) Resource		
Tonnes	Grade	Ounces	Tonnes	Grade	Ounces	Tonnes	Grade	Ounces
57,902	30.6	56,881	47,338	16.3	24,798	160,425	21.8	112,537



Long Section showing all Orebodies and Exploration Targets



Mystery Creek



Glenn Laing

President & CEO

glaing@standrewgoldfields.com

Victoria Vargas

Investor Relations Manager

vvargas@standrewgoldfields.com

Martin Walter

Manager, Corporate & Exploration

mwalter@standrewgoldfields.com

Greg MacRae

Suite 1280 - 425 Howe Street

Vancouver BC V6C 2T6

Tel: 604 6833613 Fax: 604 6898547

gmacrae@standrewgoldfields.com

Suite 212, 1540 Cornwall Rd Oakville Ontario

Tel: 905 8159855 Fax: 905 8159437

Website: <http://www.standrewgoldfields.com>

Emerging Gold Production, Development and Technology Based Exploration

PRODUCTION SLATED FOR 2004 GROWING TO 135,000 OZ BY 2006