

OFFICERS AND DIRECTORS

John H. Kruzick Pres/Geologist
Sharon L. Ross Sec/Director
Robert G. Young Director
C. Robert Edington Director

LISTING INFORMATION

CDNX Symbol: DRC
CUSIP NO. 233296 10 2
Moody's Investment Services Manual
S.E.C. Rule 12g3-2(b) Reg #82-713

TRANSFER AGENT

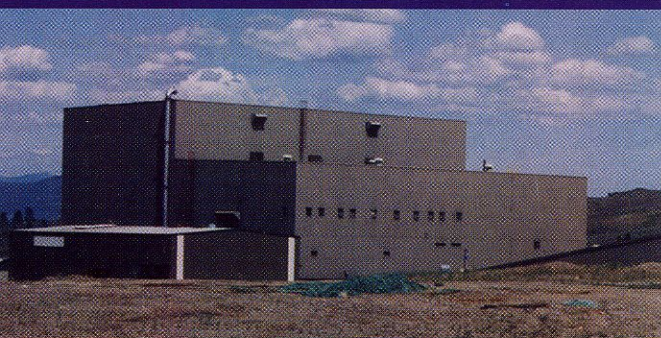
Montreal Trust Company

SHARE CAPITAL

Issued: 4,456,016 common

WORKING CAPITAL

\$670,000.00



DRC RESOURCES CORPORATION

#601 - 595 Howe Street,
Vancouver, B.C., V6C 2T5
Tel: 604.687.1629 Fax: 604.687.2845
Web: www.drcresources.com
Mail: drcrescp@uniserve.com

SUMMARY

Plan - Increase Reserves

- 10.5 Mt to 30 Mt (10.5 Mt to 200 m depth)
- Zone open to depth beyond 200 m (660 ft)

Value per ton of Reserve

- \$36 (US)/ton
- = 2.15% Copper Equivalent
- = 0.13 oz/t Gold Equivalent

Gross Metal Value of Reserve

10.5 Mt = \$400 Mil (US)

Gross Metal Values (Projected)

20 Mt = \$720 Mil (US)

30 Mt = \$1.1 Bil (US)

Proposed Underground Mine

- Low-cost bulk-mining of 100 m (330 ft) wide zone
- 3000 tons/day
- direct mining cost = \$12/t (US)

Estimated Development Costs

- Upgrade mill equipment & develop underground mine (Gov't permits in place)
- Total cost = \$30 Mil (US)

Projected Gross Profit per ton

\$36/ton (US) Metal Value
\$16/ton (US) Mine/Mill Cost
\$20/ton (US) Gross Profit/ton



Copper-Gold Zone
100 m (660 ft) wide
projected to depth

AFTON MINE HISTORY

1971: Afton discovered 10 Kms (6 mi) West of Kamloops, B.C.

1973: DDH 73-32 and 73-47 drilled under pit-bottom

1978: Mine in production

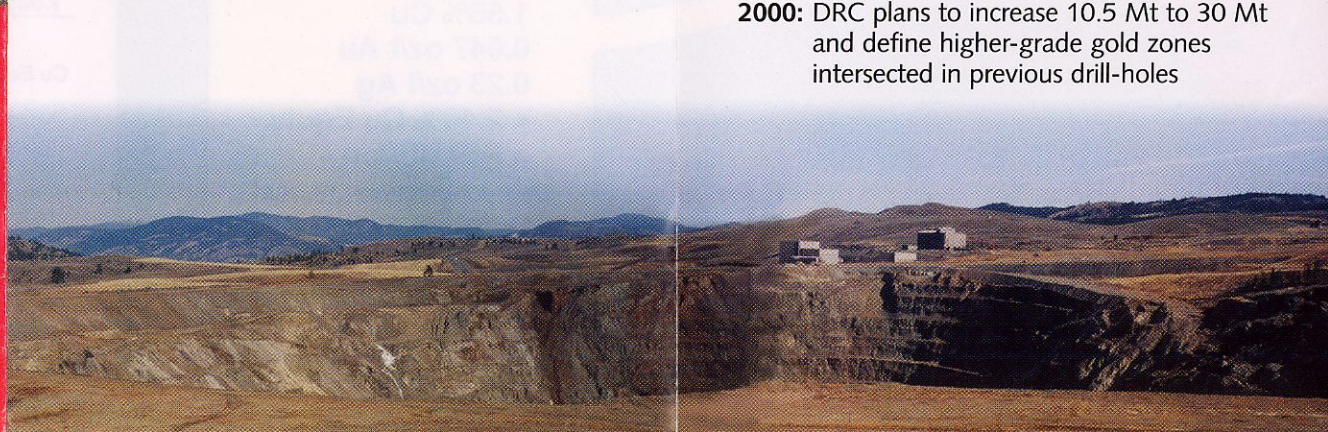
1980: DDH 80-1 to 80-5 confirmed the 100 m (330 ft) wide zone continues to 200 m (660 ft) depth

1981: 10.5 Mt (1.5% Cu, 0.03 oz/t Au, 0.2 oz/t Ag) estimated from planned pit-floor to 200 m (660 ft) depth (Zone open to depth)

1987: Open-pit closed

1999: DRC optioned 100% interest and compiled data-base

2000: DRC plans to increase 10.5 Mt to 30 Mt and define higher-grade gold zones intersected in previous drill-holes

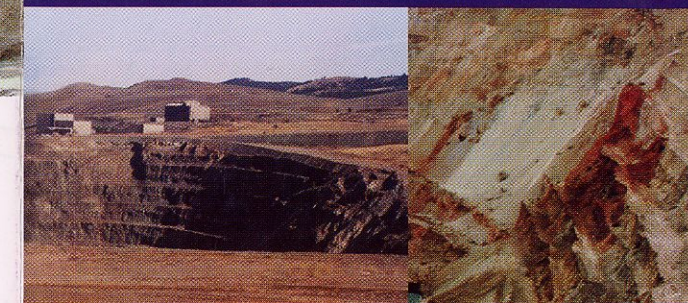


886024
New Afton

Afton Mine Project

DRC Resources Corporation

(DRC.CDNX)



Reserves*

- 100 m (330 ft) wide zone drilled to 200 m (660 ft) depth
- 10.5 Mil tons in 200 m deep block
- 1.5% Copper, 0.031 oz/t Gold = \$36 (US)/t Metal Value
- \$400 Mil.(US) Total Value
- open to depth **estimated*

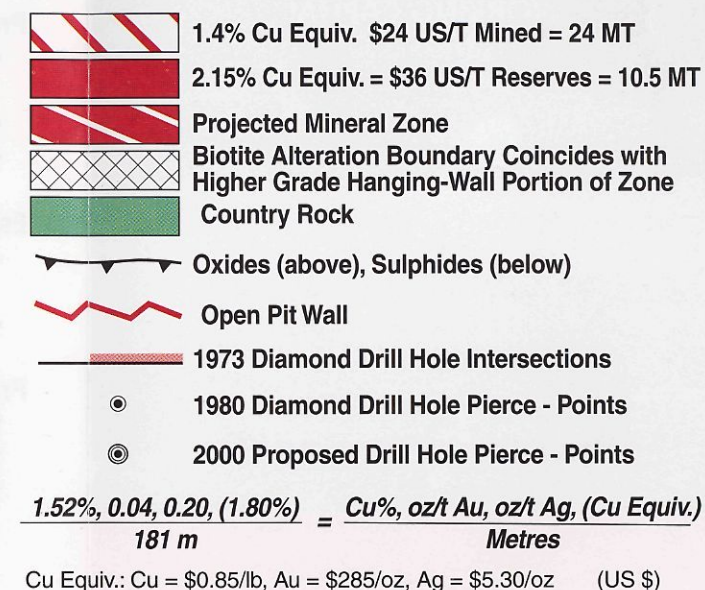
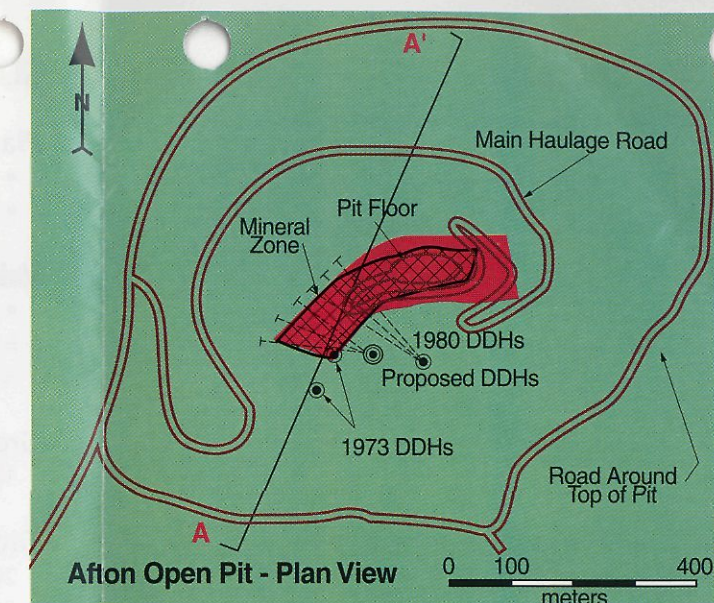
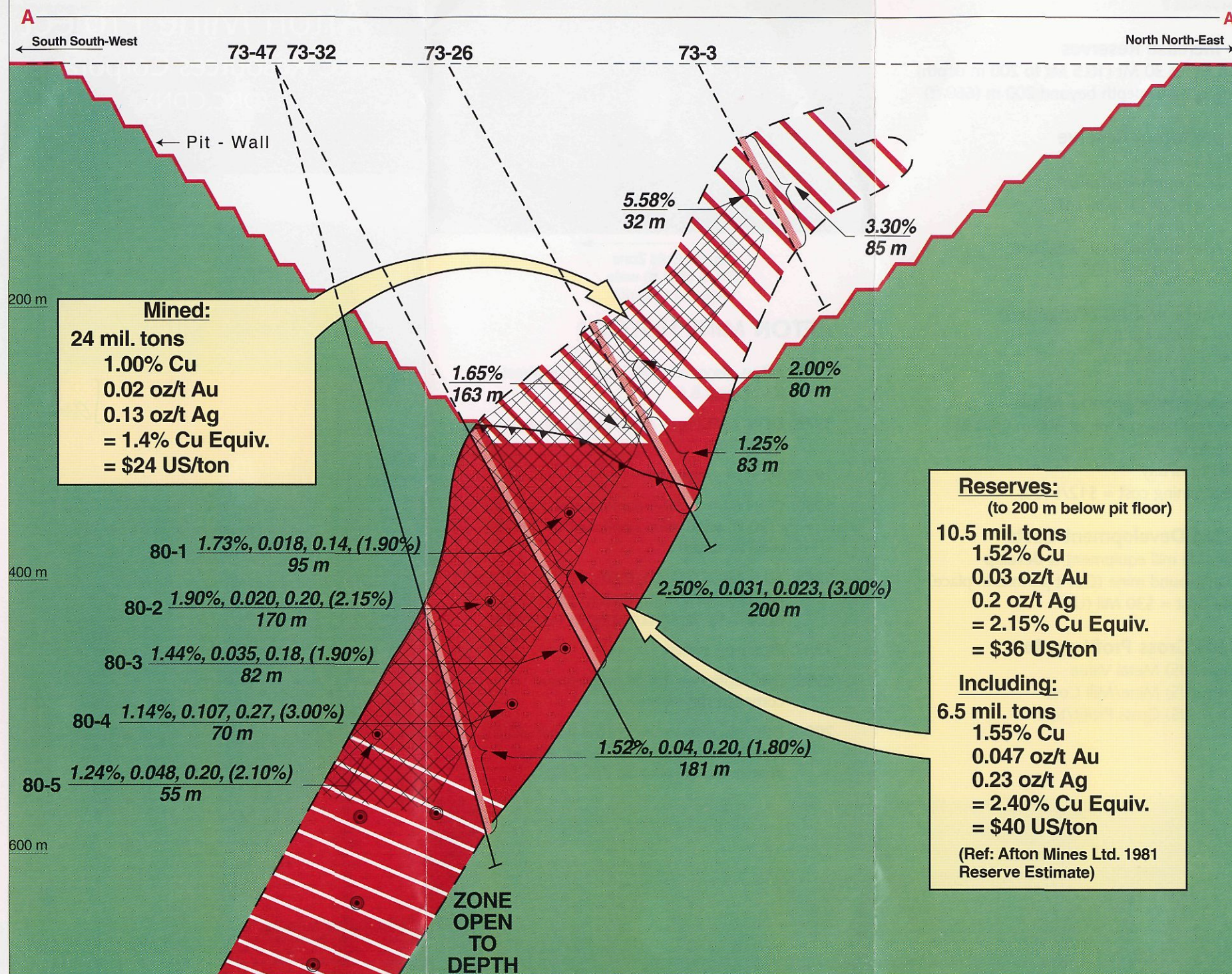
Drill Program early 2000

- test below 200 m (660 ft) depth
- test high-grade section intersected in DDH 80-4 (0.107 oz/t Gold/70 m)
- increase Reserves and Grade

Low Cost Development

- Mill buildings, Tailings Lake, & Government Permits from previous Afton Mine available

www.drcresources.com



DRC Resources Corporation Afton Mine Cross Section (Ref: Afton Mines Ltd.)

