

# KUTCHO CREEK

Mon. Aug. 30/82

- with Andre Panfiliyev
- joined by Ed Holt
- John Gonzalez - tel. for (Telegraph Ct)

Rain forecast

Cessna 180 \$260 return

R. D. PENHALL LTD. MADE IN D.C. DUKEBAK WATERPROOF 104I 006,052

~5000 ft. of surface detritus  
218 m (715 ft) of X-cut

145 metric tons of ore for testing

## 2 Zones

Zone 1: 4m Benz + 13m (Zone = 100+ ft. of fault)

- Amphibolite schist
- Green schist / Qtz schist
- Qtz-eye schist
- Ser. sch.
- Mass. ore (Mo)
- Semi-mass. ore (SMO)
- Stringer / Network ore (St)
- Banded ore (Bo)

Elev. Portal 1565 m / 20 person camp

METRIC

884688

Zn-rich in H.W.

Ore Zones



Esso  
4m

Sumac  
12 million

Esso W  
2m

~~5m~~  
1.67% Cu  
2.3% Zn  
1% Ag  
0.01% Au (3 gmt)

Eq 100' Cu  
1% Cu

Sumac

128 ddh ~ 70,000 g/t

Then Esso > 30,000 ft

total ddh > 100,000'

Oil

Taiji Keno  
and  
Roy Suzuki

Sumac Mines Ltd.

Avg. dip of rx. - 70° N  
ore body dips @ 45° N

~ 463 pairs of ore to be shipped  
via Smithers (Caribou to Dease & down)

portal by DDH-26, 27 just inside claim  
boundary with Esso.

Rolly - caretaker at Sadex (from Hazelton)

June 23/77

- Nephos optioned Silver STA., asbestos prop. + moved in across from Sadex strip.
- Falc. lifted up hill
- Noranda CEM crew out
- heard Gabrieste (G.S.C.) on radio.

SUMAC

- last hole > 100' sulphides + still in (~ 1500' inside (west) claim boundary)

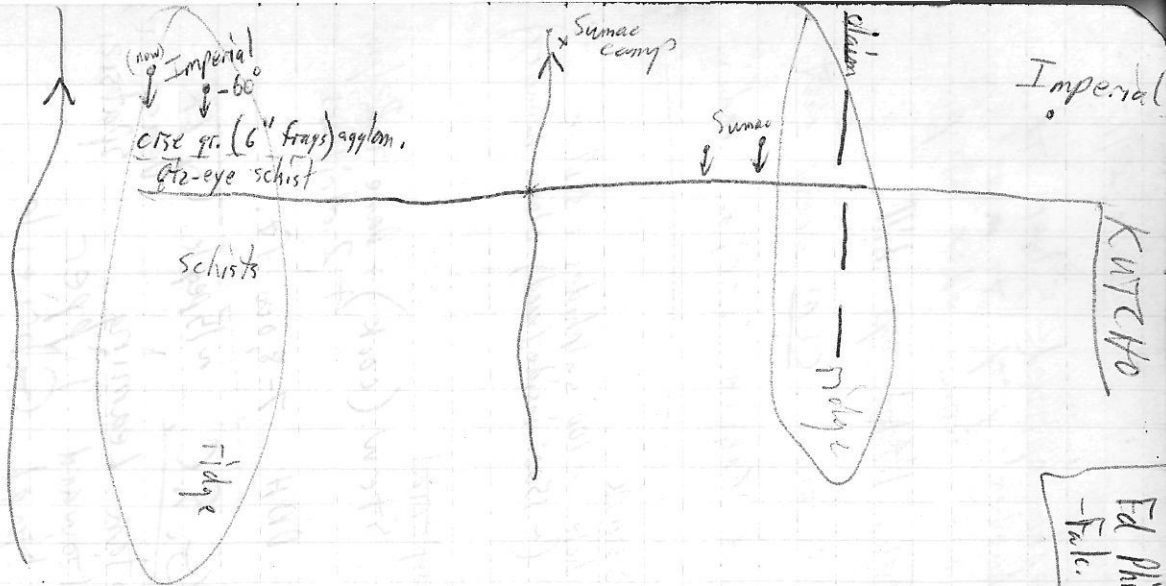
Imperial

- Stew (cook) + Dane + Kelper + 2 drillers
- DDH 7-8,000 ft.

G.S.C. ~ 15 people Coy LK. Dease, spatsizi

- Stan Leaming
- Howard Tipper
- Nugh Gabrieste
- Linda Therstad (?)

chopper to Richards in Sept.



(now) Imperial  
↓ -60°

CISE gr. (6" frags) agglom.  
Gr-eye schist

x Sumac  
Camp

Sumac  
↓ ↓

Sharon

Imperial

Schists

KWTCO

Ridge

Ridge

Ed Phillips  
-Falc. pilot

SUMAC - KUTCHO Aug. 19/76

DDH 75-16 390-490 <sup>ore</sup> zone  
about 30-40' massive py+bn  
+cpy

↑  
Main Zone on ridge = DDH-75-16

(New) West zone 76-24 - on <sup>ridge</sup> west  
Horizons en echelon' of comp.

Grit unit in hanging wall  
is key. - also increase in  
qtz, eye content & also  
silica content.

- sig. pyrrhotite dissem (beds)  
in argillite (no graphite)  
- minor slump structures

- cleavage transects bedding

- some chalcocite? with bn + cpy

- ZnS observed.

- Good Beshi type deposit  
with more than 1 orebody en  
echelon

- present drilling near nose of anticline.

RIDGE

Ridge

Cond. 1975

Imperial

X  
75-6

ore  
ore

X  
75-11  
ore

X  
76-24  
ore

Imperial

Sumac

Imperial Sumac

X  
Sumac  
camp

Aug. 22/76

SNOW!!

SUMAC

① Slide + print  
KT-24 - 988  
Augen such.

76-24

836

- 862 -

hanging wall

qtz-dol rich

Picture

862 - 864 -

+ sulphide

864 - 880 -

Massive sulphide

882 - 1010 -

Sulphide

1010 →

footwall (Lt green tuff)

Slides

①

KT-20

(complete section)

Argill → Lt. green tuff

② KT-24

- 2

ore section  
side by side  
(see sketch)

③ KT-16

- Footwall plus  
ore section

④ KT-16

- Hanging wall

+ Augen tex.

⑤ KT-21

- Grit in hanging wall

with blue qtz  
at 215 ft.

⑥ Slide + print

320 F Pacific Rainproof

KT-16

347

- massive su  
banded cpx  
+ fms

~~102 ft~~  
126

440-459

lt. green tuff - gtz-eye rich

420-440

gtz + dol + sul  
gtz + dol + sul  
gtz + sul  
gtz + sul

401-420

Massive sul.

383-401

Massive sulphide

362-383

Massive sulphide  
Dolomite - gtz + sul  
gtz + sul  
gtz + sul

br-rich

343-362

gtz + sul  
gtz + sul  
gtz + sul  
Massive sul

br-rich

102 ft. m.h. zone

323-343

dol + gtz - Augen  
Grits - gtz eye rich

~~102 ft~~  
126

Horizon -  
146 ft  
- mineral

100-1000  
Footwall green XI tufts  
massive sul<sup>qtz</sup> + sul.

981-1000  
Massive sul

972-981  
qtz + sul

972-972  
qtz + sul

923-972  
qtz + sul  
massive sul.

Op. rich  
(good grade)

923-923  
qtz + sul  
bn + cp  
(good grade)

902-903  
qtz + sul

864-882  
Massive Sul.

843-864  
qtz - do + cp

qtz-eye rich Grits

enveloped by dolomite.

- Mineralization consists of  
cpx + bn + ZnS - somewhat  
remobilized

- Imperial ddh at 200 ft.  
centres on grid - drill off

① = Pictures

CORE LAYOUT

K-76-20

K-75-16<sup>④</sup>

③③  
K-75-24

① K-75-22

K-75-21

Sumak



Andre agrees with Tipper  
re - Skeena rx - at Coosly  
+ Grouse Mnt + Moosetia  
Johnny, etc. → phylitic  
cones, etc.

---

Pictures (slides) of Sumac core

- ① KT-22
- ② KT-24
- ③ Close-up KT-24-
- ④ KT-16 - High grade massive

Print - KT-16

---

"Charge Potential" technique

- put pole in sulphide horizon  
+ then somewhere else  
+ put charge in + measure  
potential → works well  
so far in defining sulphide  
horizons.

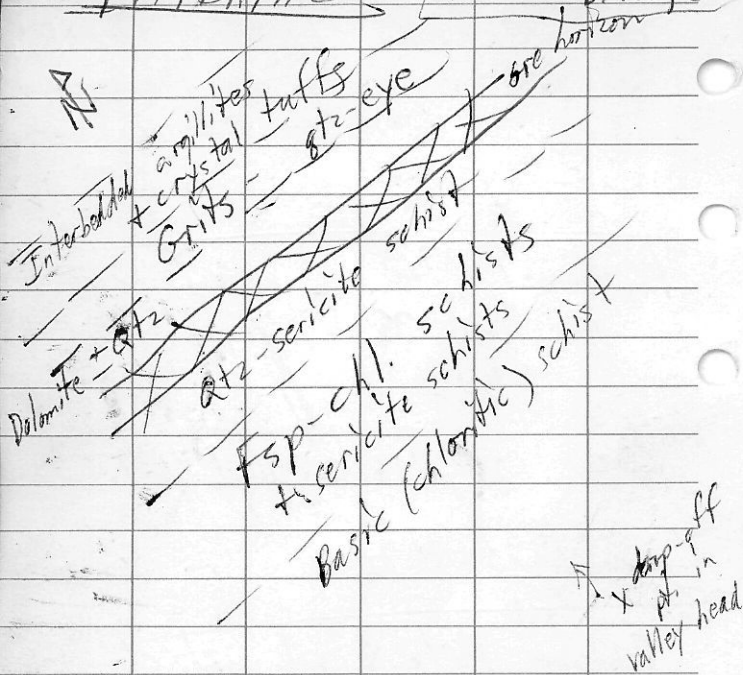
---

Sumac - 1 1908 ft. hole

Hornblende units stands up  
as resistant hills

# IMPERIAL

- Dane ~~Bridge~~ Bridge



Good ore horizon in MAIN ZONE adj. to Sumac ground.  
→ dolomite horizon immed. on hanging wall consistently along strike — i.e. no apparent structures  
- good potential to the East!  
- Dane suggests hole sulphide zone is

SUMAC  
All holes show good correlation

i.e. TOP Argillite (+ syngenetic pyrrhotite)

eg.

+ Interbedded  
DOH 76-20 → 1918 ft.  
drilled below camp  
generator Crystal tuffs

Coarse crystal tuffs  
with increasing gr. eyes  
(bluish - from Hornblende)

Grit with gr. eyes

~~Schist~~ Qtz-dolomite (schist)  
Qtz-sericite schist

at ~ 1875 ft. ORE HORIZON

Distinct Pale green sericite-talc schist

etc.  
etc. ↓

00 76-24 next hole hit  
ore near 300 ft

More than 1 zone  
Some zones up to 100 ft.  
with 40 ft. massive!  
- bedded py + ZnS + cpy.

---

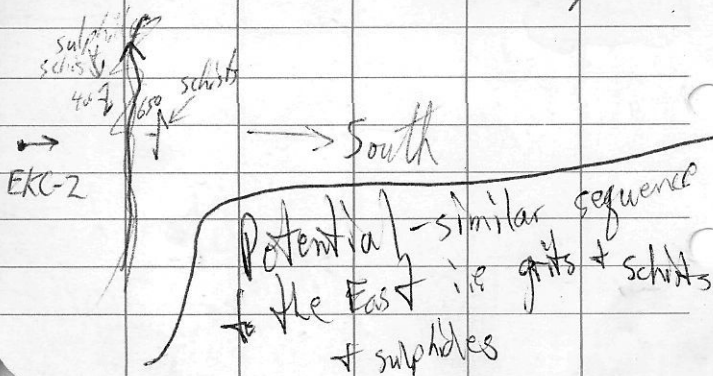
Surveyors say compass needle  
deflected by "orebody" on  
Sumac's KC claim gp.  
to the East (KC 98-99)

---

Sat Aug. 21/76

Traverse to east claims  
(~KC 80) with Cam + Andre

Picture of charge potential  
in ck. near stn. L26E/3W



WANLEY CREEK

157

crystal + light  
tuffs

crystal + light  
tuffs

with  
shells  
of  
eyes

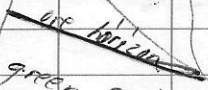
75-16

are horizon

green sericite schist

crs  
comp. hard shaly  
with  
clasts

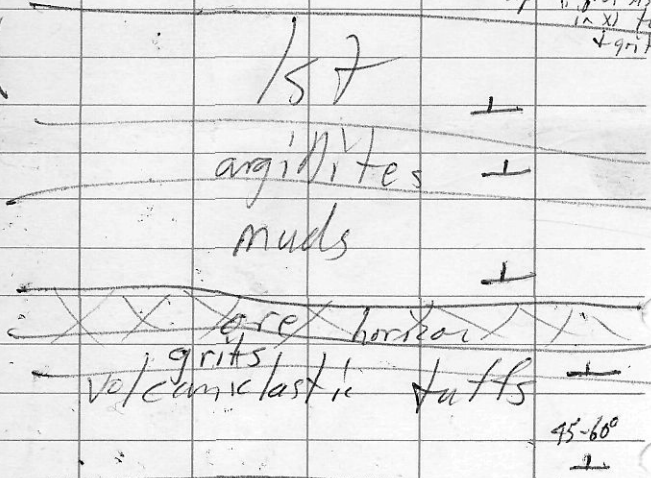
creak



Typical "sedimentary"  
marine (water-lain) Volcanic Sequence

Volcaniclastic  
+ sandstone blew  
up in grt. xls  
in XI full  
+ grit.

N  
↑



Can hopes good potential on claim  
gp. adjoining Imperial oil to  
the East.

Joint surveying of claims to the East  
(suspected fraction)

KUTCHO CK. Mar 31/04

US #1.6 B contained [KEG]  
(Peter Helbek)

Cap. Cost ~ \$15M

OP = 5MT

UG = 6.9MT

Ann. Prod.

[12 yr mine life; 55-60M lbs Cu  
70-75M lbs Zn; 1.2M lbs Ag  
11,000 oz Au]

→ improve metallurgy

PH → Roundup '04  
"need to upgrade  
Esso West zone from  
1.5 MT to 3 MT.  
+ drilling!