

BARKER MINERALS

Nov. 6/00

→ FRANK CK. AREA

- Louis Doyle, Fil Ferri, Tom Schroeter,
John Payne, Frank Onuki, Al
(Van. MOO).

- succession overturned - all facing to W.

- structural FW = gtzites ± argillites } Harvey's Ridge
" HW = voles (?) }
[Goose Peak fmn. in cores of synclines]

- 'new' discovery - SCR (Summers ck. road),
~ 6 km SW of Frank ck. showing:

→ quartzites with py, ch (massive/stringer, sulphides)
→ bluish quartz (i.e. rutile?)

⇒ Coloured (map) handouts: note: projected
surface trace of massive sulphides.

→ ~ 270 km grid + geophys. - Frank ck.
(+ Summers ck.)

→ IPO - next spring?

- 'Dealing' with major(s) - esp. INCO
(i.e. soon or spring - for surface work, prior to ddh)

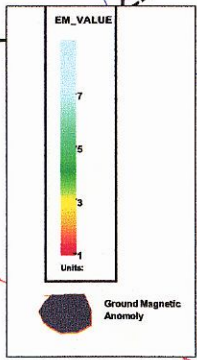
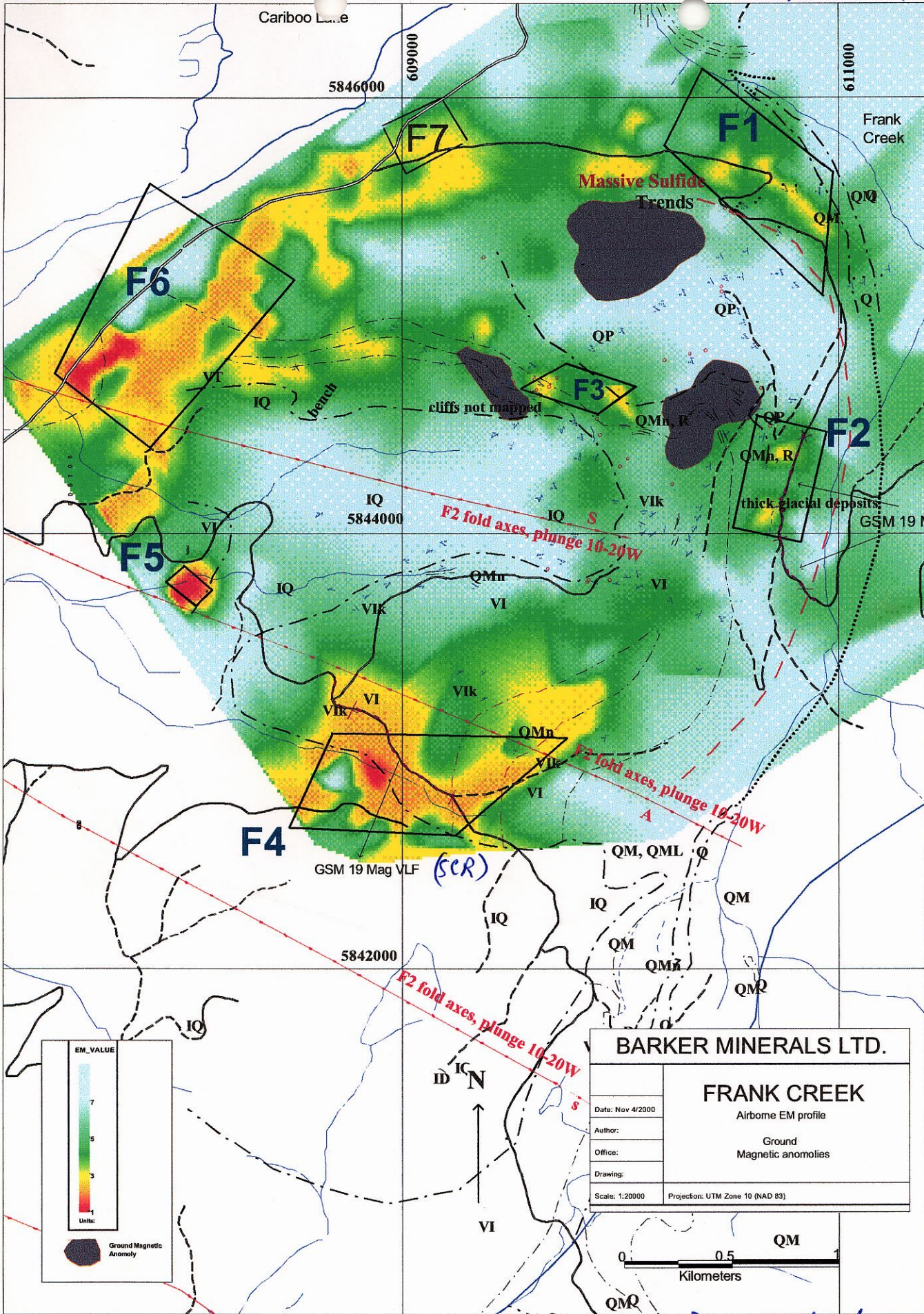
'PGE targets'

Jeremy ck. / Maude ck. (QR)

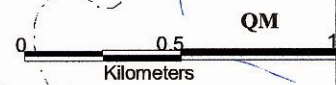
→ 'ultramafics' (PGEs) - prob. not slide mth.
→ samples to Louis Cabri - PGEs

+ 'chromites' (i.e. Cr masks' analogues
of PGEs)

Frank (k.(F1))

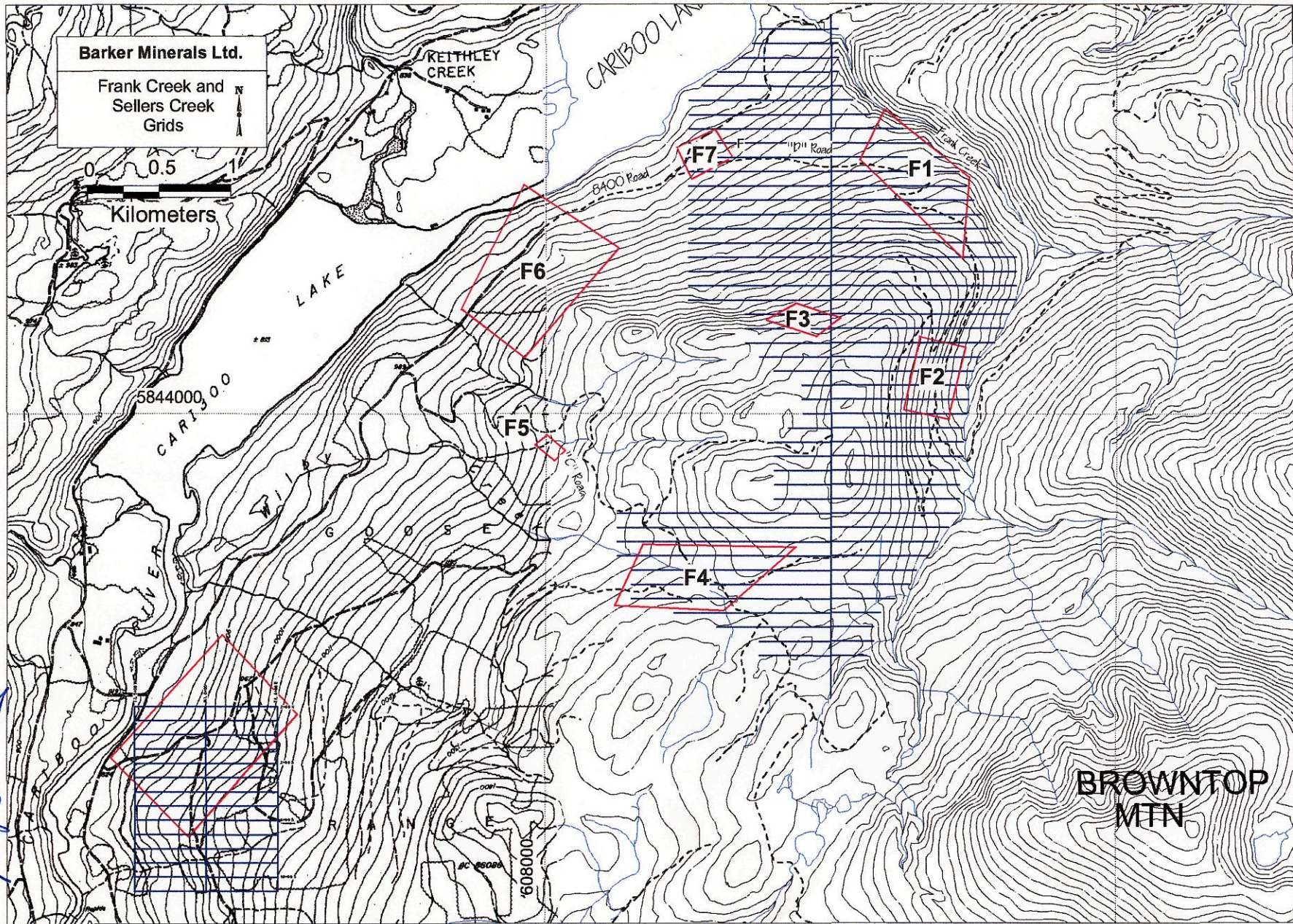


BARKER MINERALS LTD.	
FRANK CREEK	
Airborne EM profile	
Ground Magnetic anomalies	
Date: Nov 4/2000	
Author:	
Office:	
Drawing:	
Scale: 1:20000	Projection: UTM Zone 10 (NAD 83)



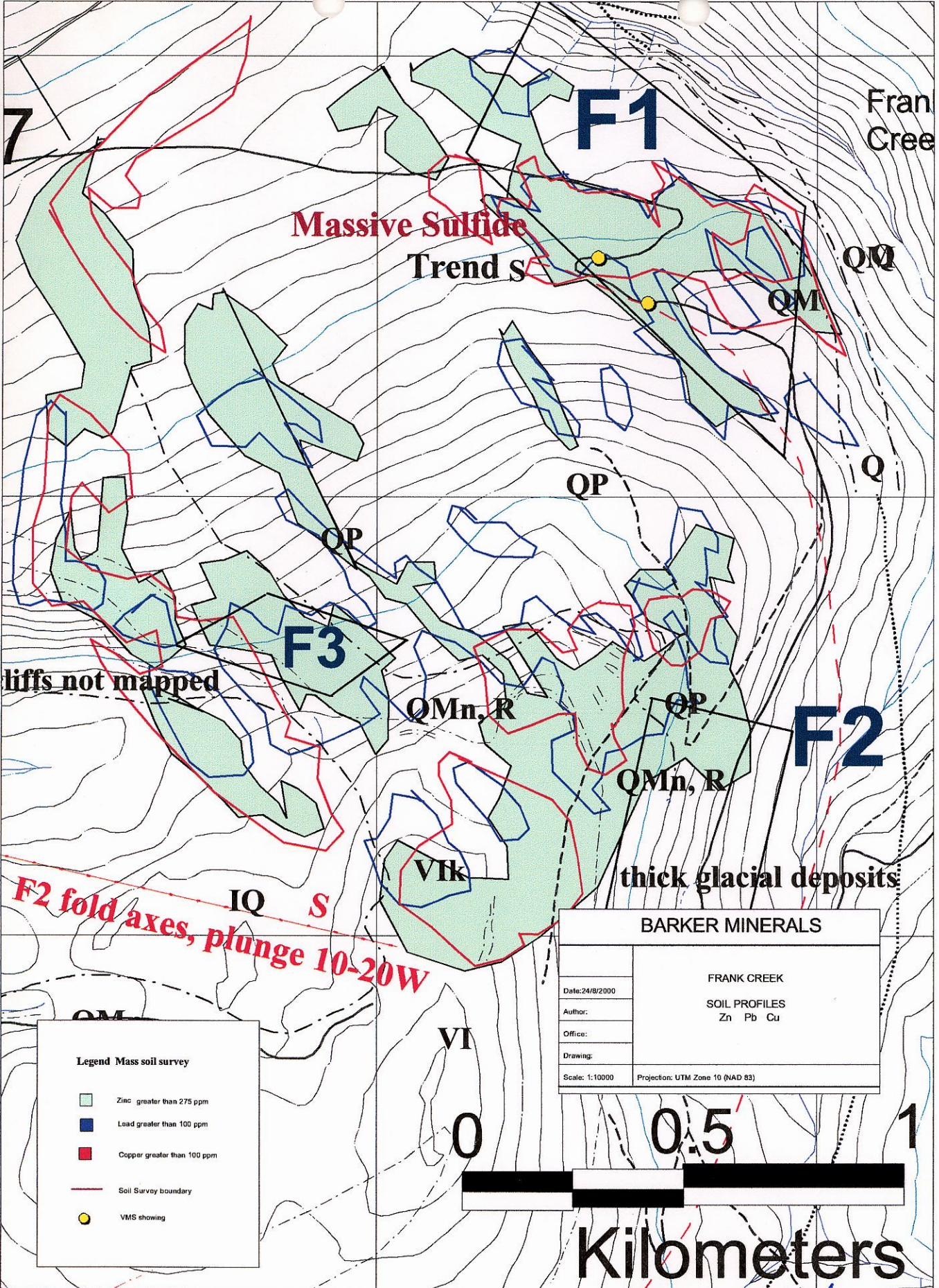
Tom Schwartz nov. 6/00

Frank Cr. (F1)



Van Schwert Nov. 6/00

SCR



Frank
Creek

F1

**Massive Sulfide
Trend S**

QQ

QM

QP

Q

QP

F3

cliffs not mapped

QMn, R

QP

F2

QMn, R

thick glacial deposits

F2 fold axes, plunge 10-20W

IQ S

VIk

BARKER MINERALS

Date: 24/8/2000

Author:

Office:

Drawing:

Scale: 1:10000

Projection: UTM Zone 10 (NAD 83)

FRANK CREEK

SOIL PROFILES

Zn Pb Cu

Legend Mass soil survey

- Zinc greater than 275 ppm
- Lead greater than 100 ppm
- Copper greater than 100 ppm
- Soil Survey boundary
- VMS showing

0

0.5

1



Kilometers

Tom Schwaetz Nov. 6/00

EEK

Cariboo

Legend

Meta-Igneous Rocks

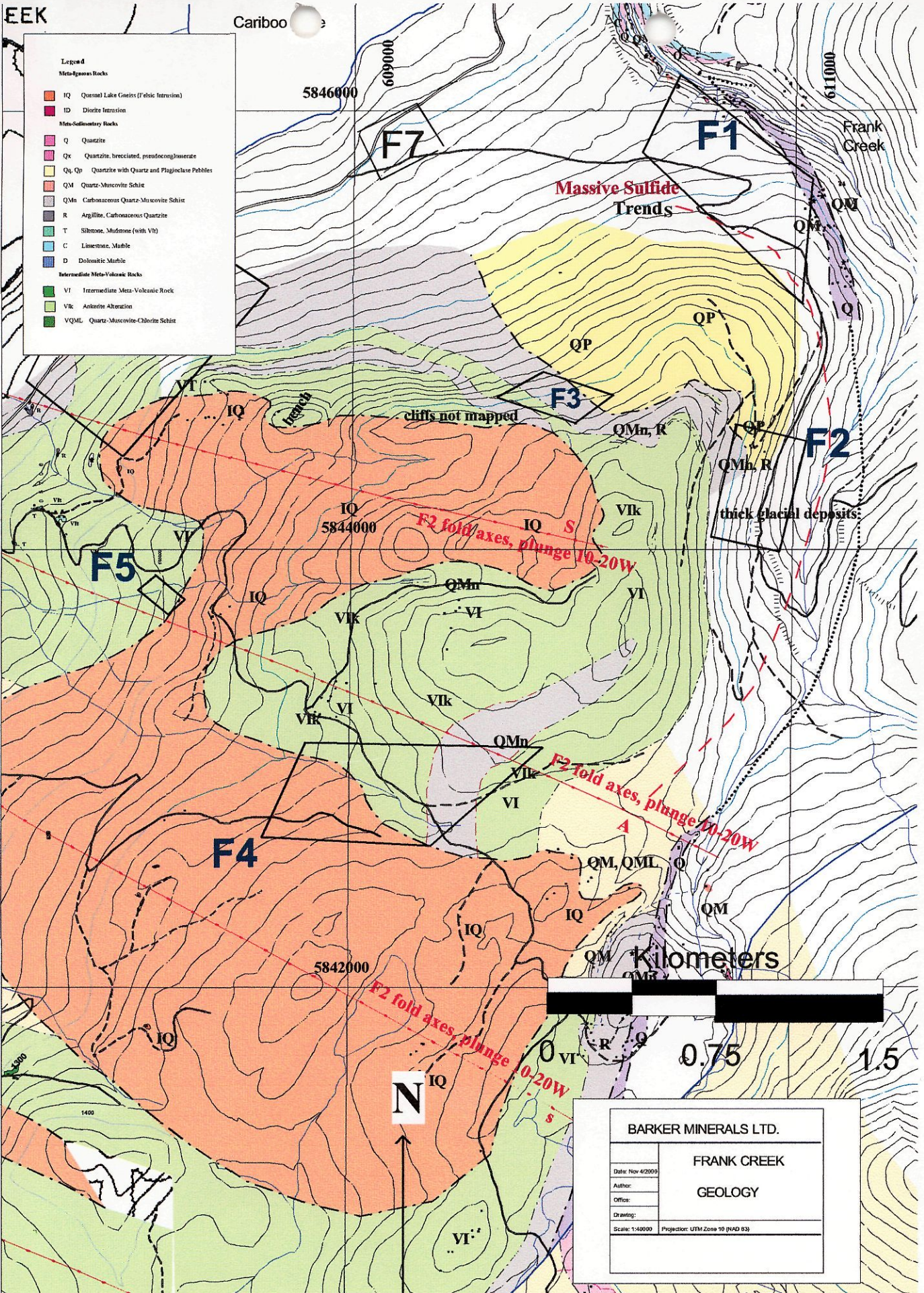
- IQ Quenne Lake Gneiss (Felsic Intrusion)
- ID Diorite Intrusion

Meta-Sedimentary Rocks

- Q Quartzite
- Qx Quartzite, brecciated, pseudotachyolite
- Qs, Qp Quartzite with Quartz and Plagioclase Pebbles
- QM Quartz-Muscovite Schist
- QMn Carbonaceous Quartz-Muscovite Schist
- R Argillite, Carbonaceous Quartzite
- T Silstone, Mudstone (with Vh)
- C Limestone, Marble
- D Dolomitic Marble

Intermediate Meta-Volcanic Rocks

- VI Intermediate Meta-Volcanic Rock
- VIk Ankerite Alteration
- VQML Quartz-Muscovite-Chlorite Schist



BARKER MINERALS LTD.	
FRANK CREEK	
GEOLOGY	
Date: Nov 4/2000	
Author:	
Office:	
Drawing:	
Scale: 1:40000	Projection: UTM Zone 10 (NAD 83)

Tom Schwabert Nov. 6/00

ACE (Frank Ok.)

Dec. 16/99

- chat with Darrell Johnson - Hunter - Dickens
- looking very closely at new showing
- option soon?!

Louis Dagle
Barker Minerals

ACE / FRANK CK.

1118 Lakeview Crescent, Williams Lake, B.C. V2G 1A3
Phone 250-392-3321 Fax 250-392-3983



\$12.9M in expl'n to date.

May 27/00

Le C/m, Br,
(Williams Lk)

Frank Ck. - mafic pillow
Ace - GSC metal studies → supergene
→ tellurides (Bi, Au, W)
(Pogo-style; VMS; veins)

2000
\$400k
on Ace + Frank

Geophys. - E-scan; max-min; IP.
- felsic volcs. - 7km strike length

Castle mtn. (to SE) - olivine-bearing volc. (Healy)
→ check POE post.