

FAIRFIELD MINERALS LTD.

861494

1980 - 1055 West Hastings Street, Vancouver, B.C. V6E 2E9
Telephone: (604) 669-3398

O K A G O L D P R O P E R T Y

The Oka gold property is located in the Okanagan area of southern British Columbia and is easily accessible by road. The property covers an area of 17 square miles and is 100% owned by Fairfield Minerals Ltd.

The claims are underlain by a pendant of sedimentary, volcanic and dioritic intrusive rocks which are cut by granodiorite. Within the pendant is a 3 mile-long gold geochemical soil feature which transects a sequence of marble, skarn, tuffaceous siltstone and minor limestone boulder conglomerate. This same sequence of rocks is considered to be the most favourable stratigraphic level for economic gold skarn development in the Hedley area.

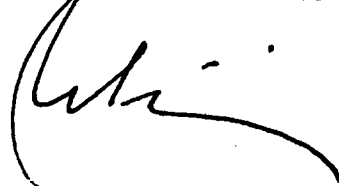
Near the eastern end of the above soil feature, gold mineralization is associated with skarn, massive sulphides and altered diorite dikes and sills in a skarn/marble contact environment over an area of about 1000 by 1500 feet. Vertical extent of mineralization exceeds 300 feet. Other similar centres of gold mineralization may lie at depth in the western portion of the target area.

In excess of 10,000 linear feet of trenching has tested areas of anomalous gold within the soil feature. Gold-bearing skarns and veins have been exposed in several widely separated areas. Significant gold values from continuous chip samples in these areas include 1.12 oz/ton across 5 feet, 0.16 oz/ton across 10.5 feet, 0.24 oz/ton across 6.5 feet and .21 oz/ton across 6.6 feet. Visible gold has been located in one of the showings and a grab sample assayed 11.19 oz/ton gold.

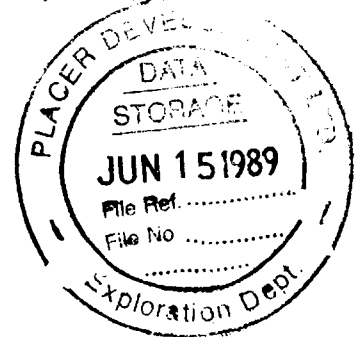
The setting of gold-bearing skarns and diorite sills at Oka is similar to that at the Mascot gold mine located thirty miles to the southwest in the Hedley area. This mine, which commenced production in mid-1987, has open-pittable reserves estimated at 8 million tons grading 0.14 oz. gold per ton. Past production exceeds one million ounces.

The geological similarities of these two properties, plus widespread occurrences of gold, indicate good potential for the discovery of a large, near-surface, open-pittable gold deposit, with the additional possibility of high-grade zones. To adequately test this potential, a major grid drilling program is being planned.

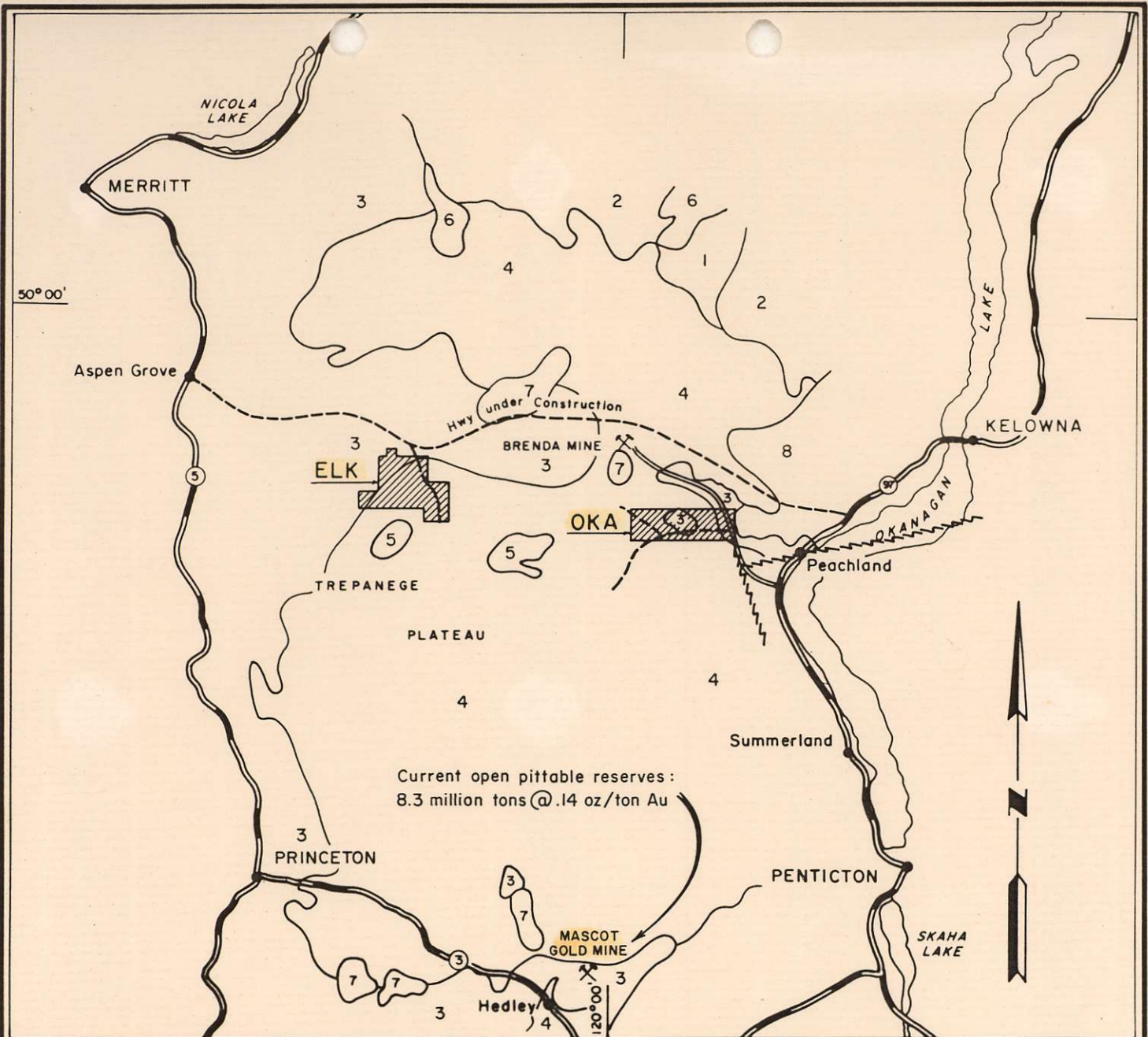
FAIRFIELD MINERALS LTD.



John W. Stollery, P.Eng.
President



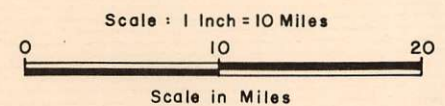
September 30, 1987



LEGEND

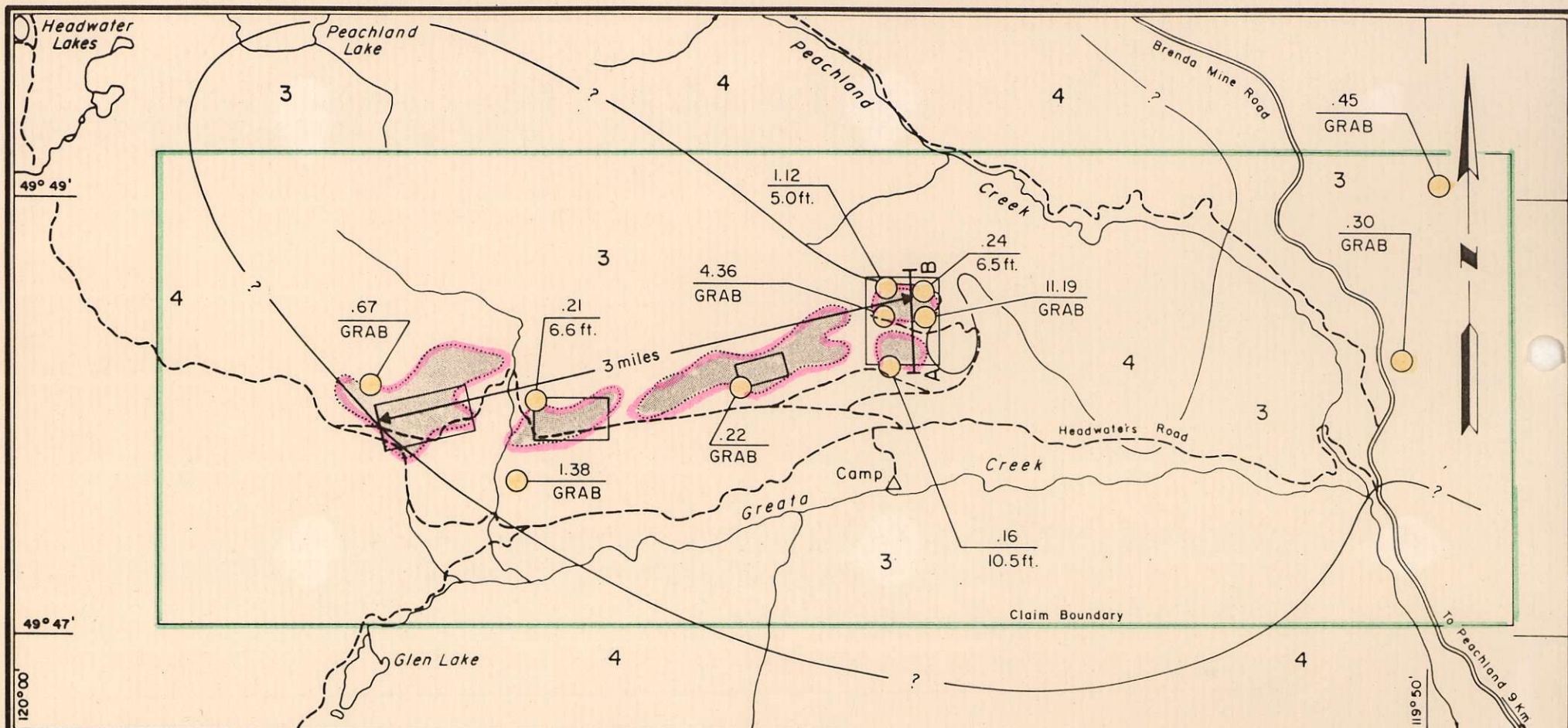
8	Eocene/Oligocene	Andesite flows
7	Miocene/earlier	Princeton Group - shale, sandstone
6	Miocene/earlier	Kamloops Group - rhyolite, andesite
5	Upper Cretaceous	Other Intrusions - granite
4	Jurassic/Cretaceous	Coast Intrusions - granite, granodiorite
3	Upper Triassic	Nicola Group - sediments, greenstone
2	Carbonaceous	Cache Creek Group - argillite, quartzite
1	Pre Permian	Chaparron Group - schist

FAIRFIELD MINERALS LTD.
PROPERTY LOCATION
AND
REGIONAL GEOLOGY
OKA & ELK GOLD PROPERTIES
SOUTH OKANAGAN AREA, B.C.



CORDILLERAN ENGINEERING LTD.
1980-1055 W. HASTINGS STREET
VANCOUVER, B.C. V6E 2E9

SEPTEMBER 1987



LEGEND

- 4 GRANODIORITE
- 3 LIMESTONE AND SKARN; ARGILLITE SANDSTONE AND MINOR GREENSTONE
- Au SOIL GEOCHEMICAL ANOMALY
- 1987 TRENCHING AREA
- GOLD SHOWING: $\frac{\text{oz/Ton Au}}{\text{Sample Length}}$
- SCHEMATIC SECTION LINE

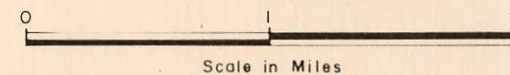


FAIRFIELD MINERALS LTD. COMPILATION MAP OKA GOLD PROPERTY

SOUTH OKANAGAN AREA

N.T.S. 82E/13W OSOYOOS MINING DIVISION, B.C.

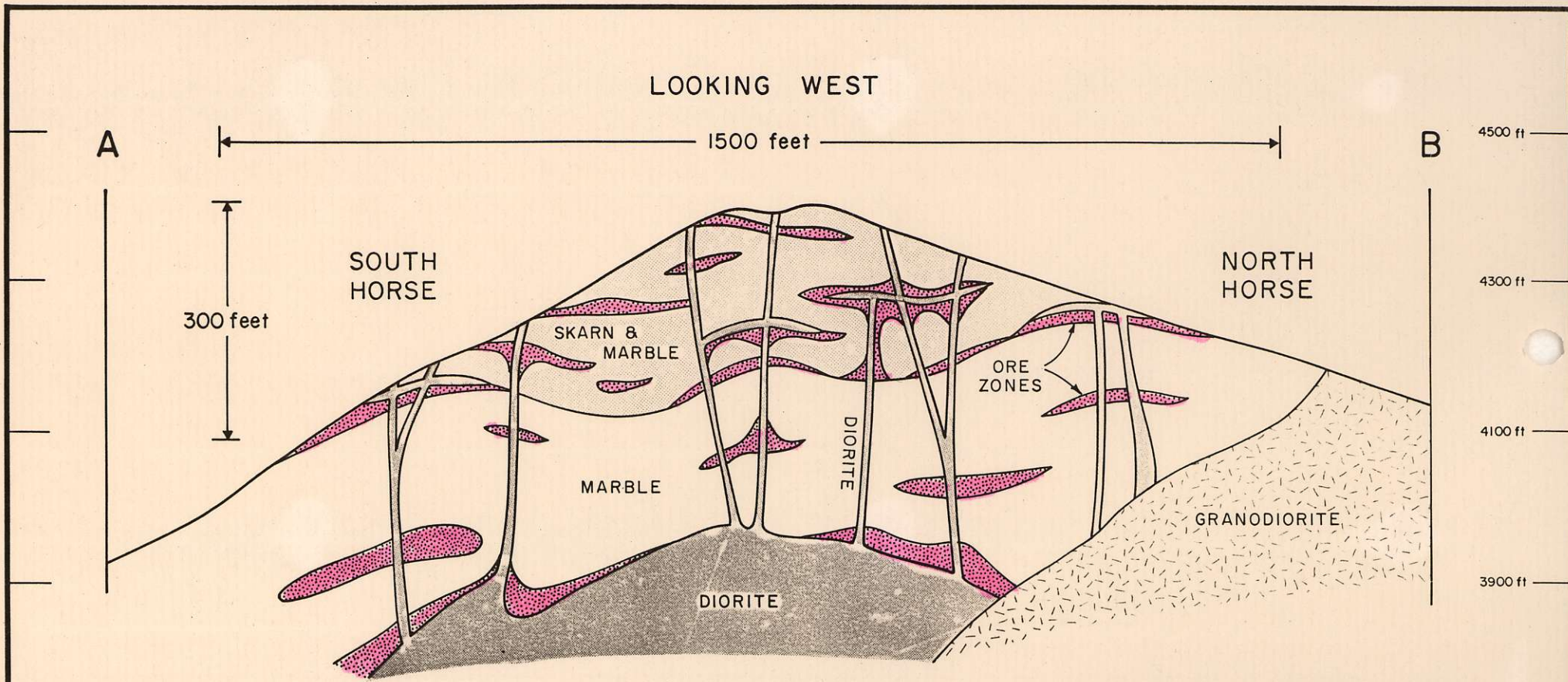
Scale 1: 50,000



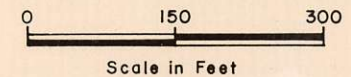
CORDILLERAN ENGINEERING LTD.

1980-1055 W. HASTINGS STREET
VANCOUVER, B.C. V6E 2E9

SEPTEMBER 1987



FAIRFIELD MINERALS LTD.
 IRON HORSE AREA
 SCHEMATIC SECTION AB
 OKA GOLD PROPERTY
 SOUTH OKANAGAN AREA
 N.T.S. 82E/13W OSOYOOS MINING DIVISION, B.C.



CORDILLERAN ENGINEERING LTD.
 1980-1055 W. HASTINGS STREET
 VANCOUVER, B.C. V6E 2E9
 SEPTEMBER 1987

SCHEMATIC SECTION ILLUSTRATING THE STRATIGRAPHY
OF THE HEDLEY AREA, BRITISH COLUMBIA

WHISTLE CREEK
SEQUENCE

MASCOT GOLD
MINE

HEDLEY SEQUENCE
(UPPER TRIASSIC)
450-600 m

APEX MOUNTAIN
GROUP
(PALEOZOIC AND
TRIASSIC)