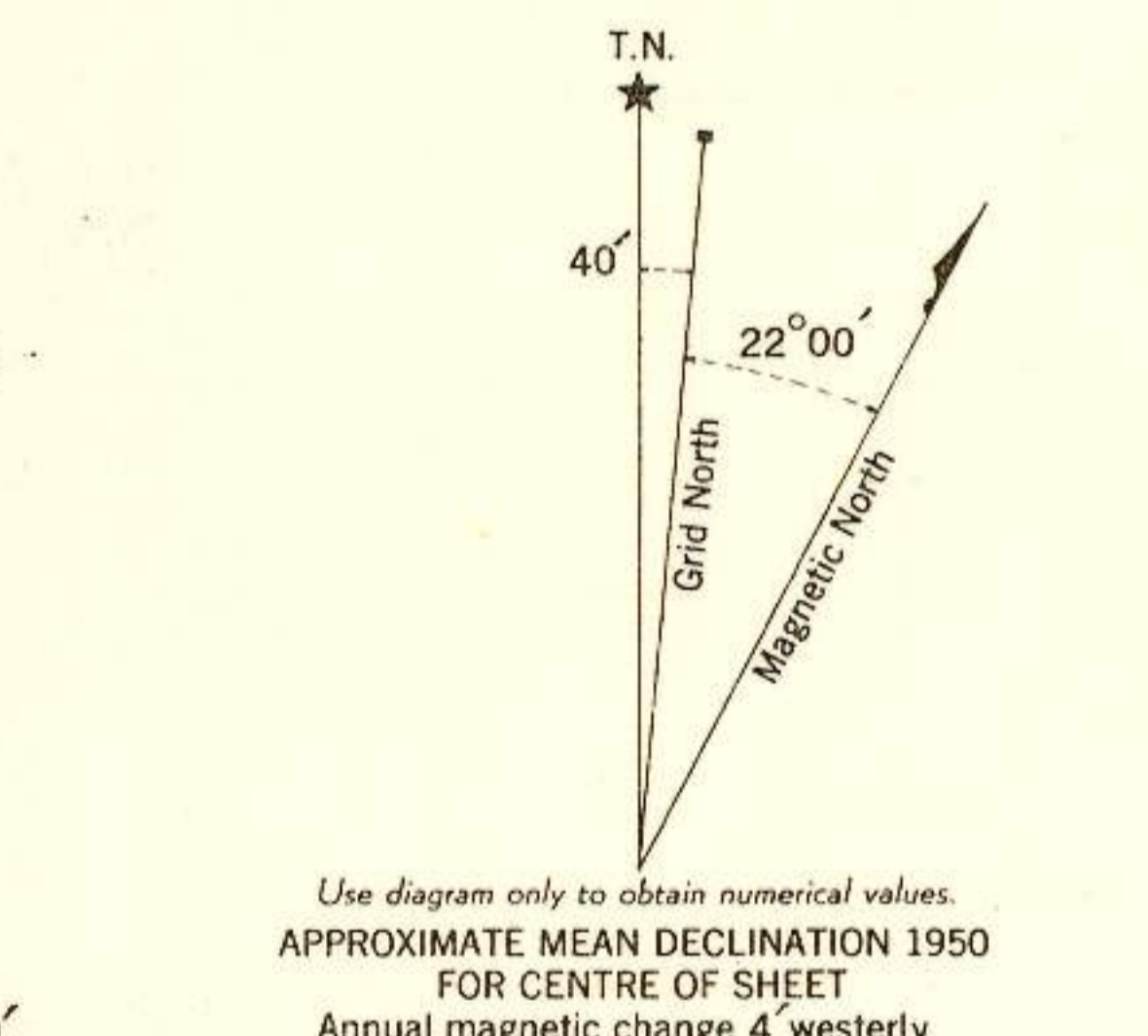




CANADA
DEPARTMENT OF NATIONAL DEFENCE
ARMY SURVEY ESTABLISHMENT

REFERENCE

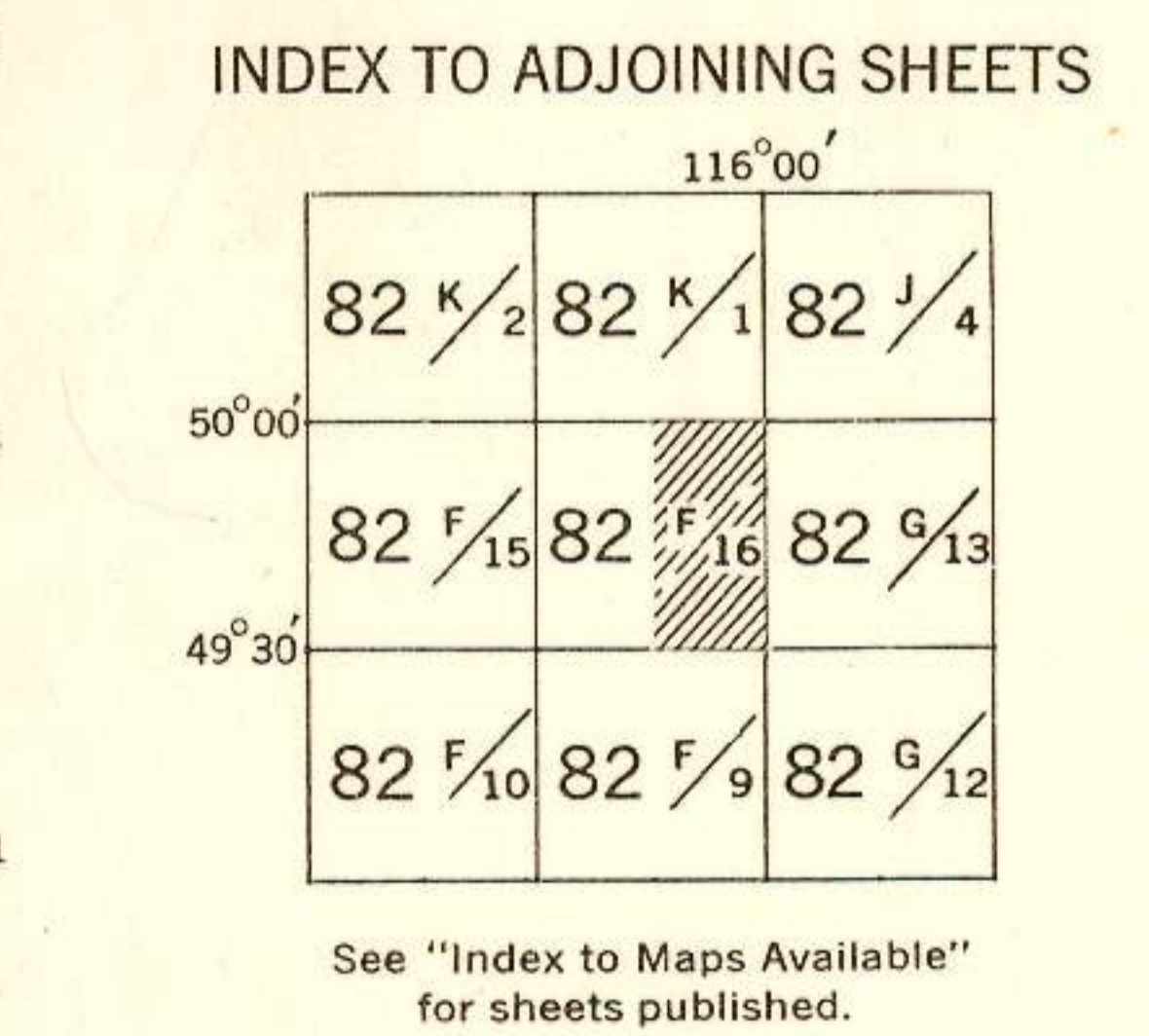
- Roads:
 - hard surface, all weather more than 2 lanes Part completed
 - hard surface, all weather 2 lanes (D) less than 2 lanes
 - loose surface, all weather more than 2 lanes All weather
 - loose surface, less than 2 lanes All weather Dry weather
- Cart Track, Footpath Trail, Cart track, Footpath or Trail, Special, Snow Road, etc.
- Railways:
 - standard gauge, multiple track
 - standard gauge, single track
 - narrow gauge, multiple track
 - narrow gauge, single track
- Tramway on Road
- Bridge, underpass or overpass
- Boundary, International
- Province or State
- County or District
- Township, Seignior or Parish
- City or Town
- Reservation, Indian Military, etc.
- Electric Power Line on Steel Towers on Wood Poles
- Telephone, trunk route
- Triangulation Station
- Boundary Mon., Survey Mon. B.M.
- Bench Mark 679.1
- Spot Elevation, (in feet) 548
- House, Barn
- Buildings
- Mill or Factory, small, Saw Mill, etc. SM
- School S
- Church
- Post Office, P
- Telephone Exchange, T
- Mine or Open Cut
- Cemetery or Churchyard
- Quarry
- Sand or Gravel Pit
- Cliff
- Cutting
- Embankment, Dump, etc.
- Lighthouse
- Wharf or Pier
- Foreshore Flats
- Swamp or Marsh
- Lake or Slough, intermittent
- Glacier or Snowfield
- Stream, intermittent
- Irrigation Canal, Ditches
- Inundated Land
- Contours, elevation
 - depression
 - approximate
 - Relief, not indicated by Contours
- Wooded Areas, heavy
- light
- Camera Station, elevation in feet 871



TO GIVE GRID REFERENCE ON THIS SHEET
FIGURES, IGNORE THE SMALLER FIGURES PRINTED AROUND THE MARGIN
of the map. These are for finding the full coordinates.
USE ONLY THE LARGER FIGURES PRINTED IN THE MARGIN OR
ON THE FACE OF THE MAP. (Vic. 512)

POINT Cabin			
FOR STANDARD MILITARY GRID REFERENCE			
East	69	North	13
Take West edge of square		Take South edge of square	
which point line, and read		the figure printed opposite	
the figure printed opposite		this line on East or West	
this line on North or South		margin or on the line itself	
margin or on the line itself		on the face of the map.	
Estimate north Eastward.	698	Estimate north Northward.	135
STANDARD MILITARY GRID REFERENCE 698135		(to nearest 100 Metres)	

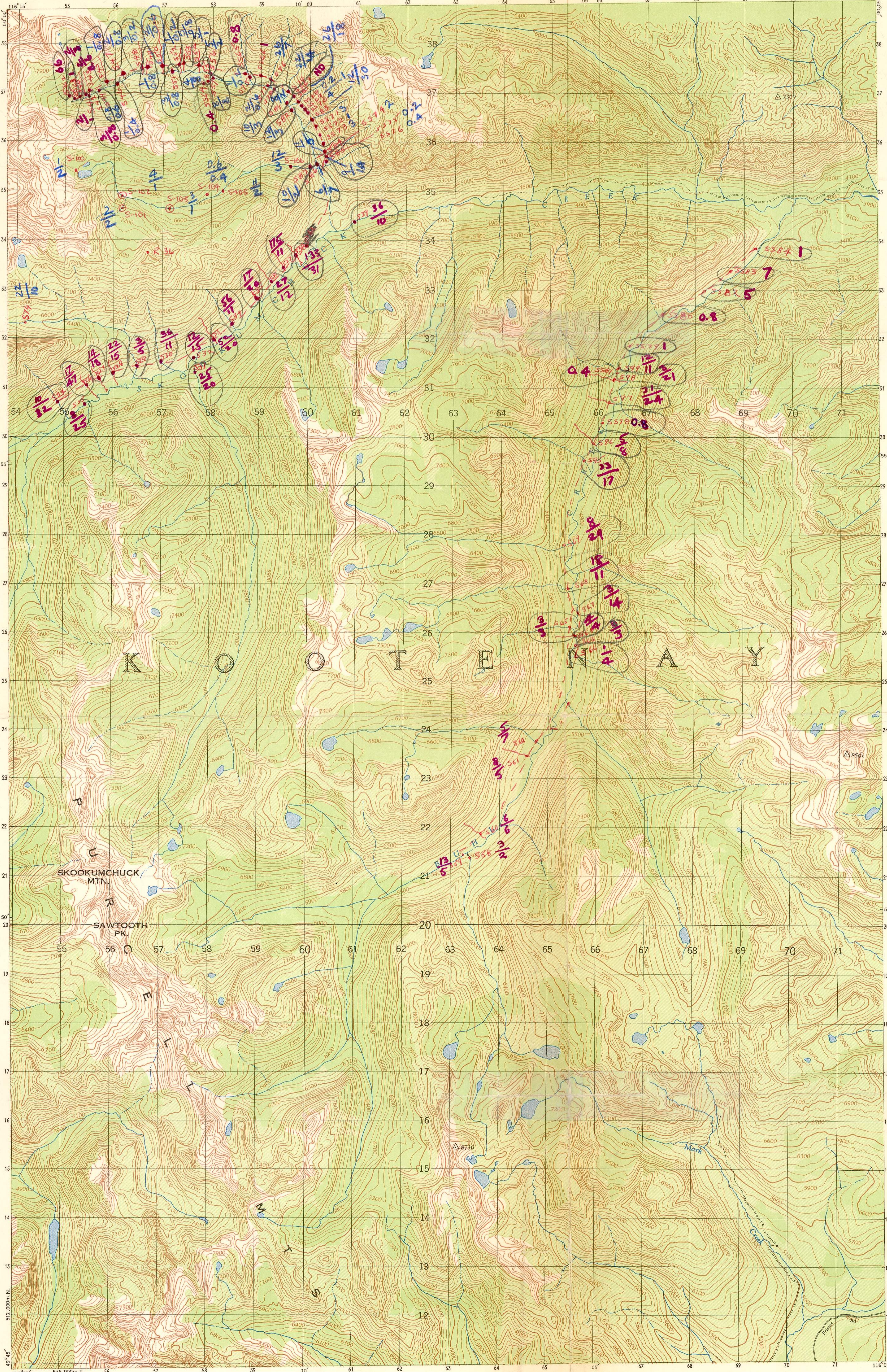
TEN THOUSAND METRE
UNIVERSAL TRANSVERSE MERCATOR GRID
ZONE 11



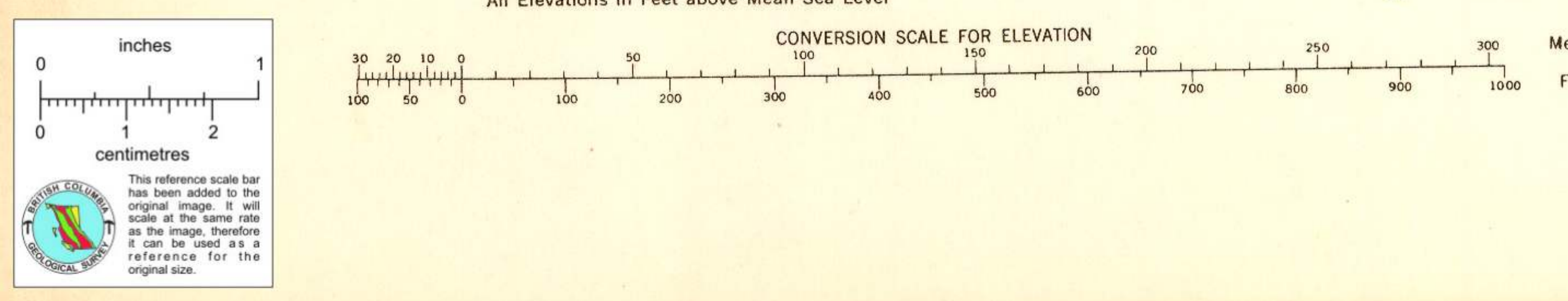
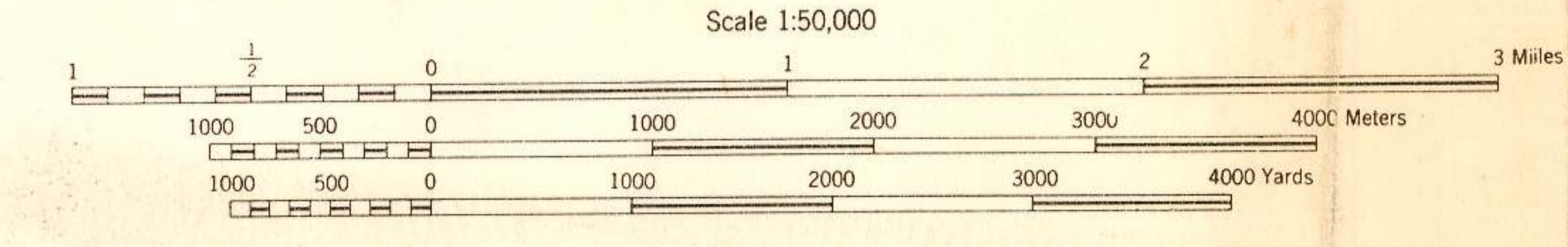
Note: Copies of this map required for official purposes may be obtained from the Army Survey Est. AHQ Ottawa. The general public may obtain copies from the Map Distribution Office, Dept. of Mines and Technical Surveys, Ottawa, at 25 cents per copy.

DEWAR CREEK
82 F₁₆ EAST HALF
FIRST EDITION

841794
C 445



Surveyed, compiled, drawn and printed by the Army Survey Est. R.C.A.F. 1949-51. Aerial photography by R.C.A.F. 1948. Published 1951.



X