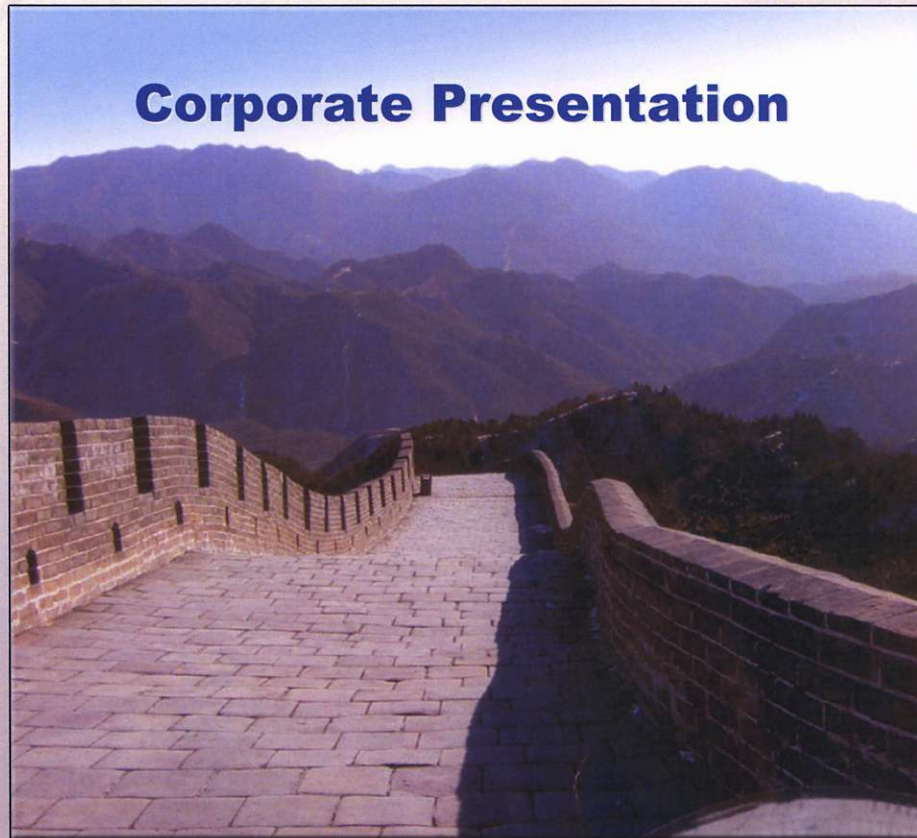


 **NEWCANTECH**
VENTURES INC

Corporate Presentation

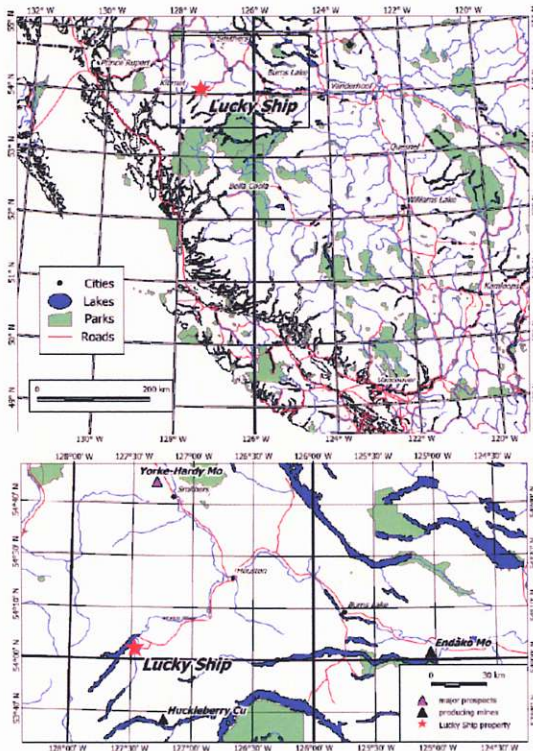


TSX.V: NCV

LuckyShip
093L/3W

831206

Lucky Ship Molybdenum Property Location



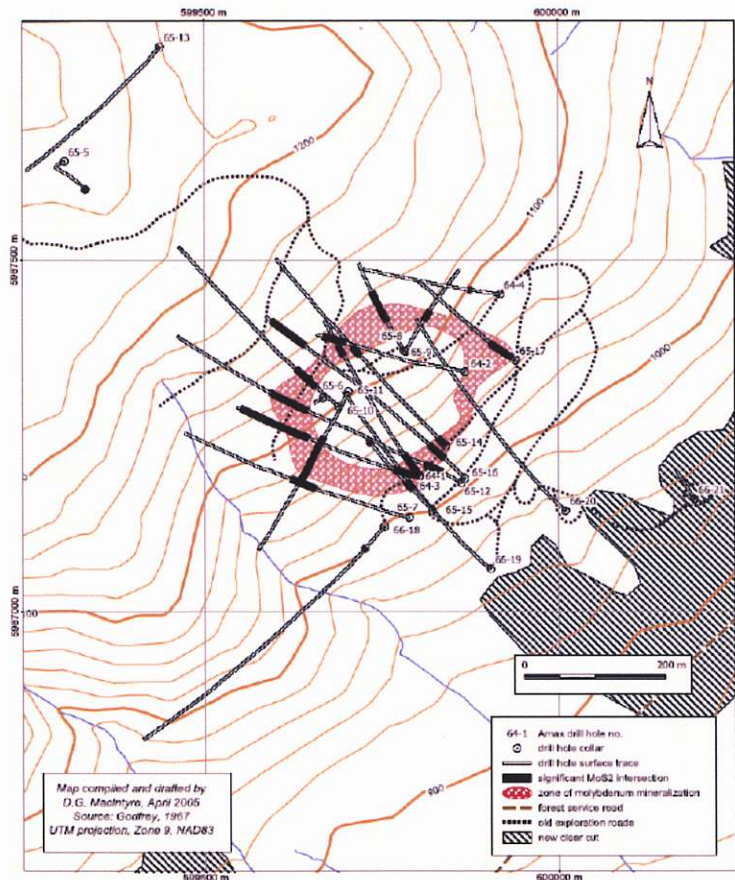
- Property located near Houston, British Columbia
- Historical reserves 18 million tonnes (20 million tons) 0.1690 MoS^3 (Molybdenite)
- Upper portion grade 0.2090 MoS^3 estimates based on historical data, Amax Explorations data in mid 1960's *
- Estimated recovery approx. 2 lbs Mo per ton
- Current market price molybdenum \$38.25 per lb.

Location Map

Fig. 1 Location of the Lucky Ship Property

**not National Policy 43-101 compliant*

Lucky Ship Molybdenum Property Overview

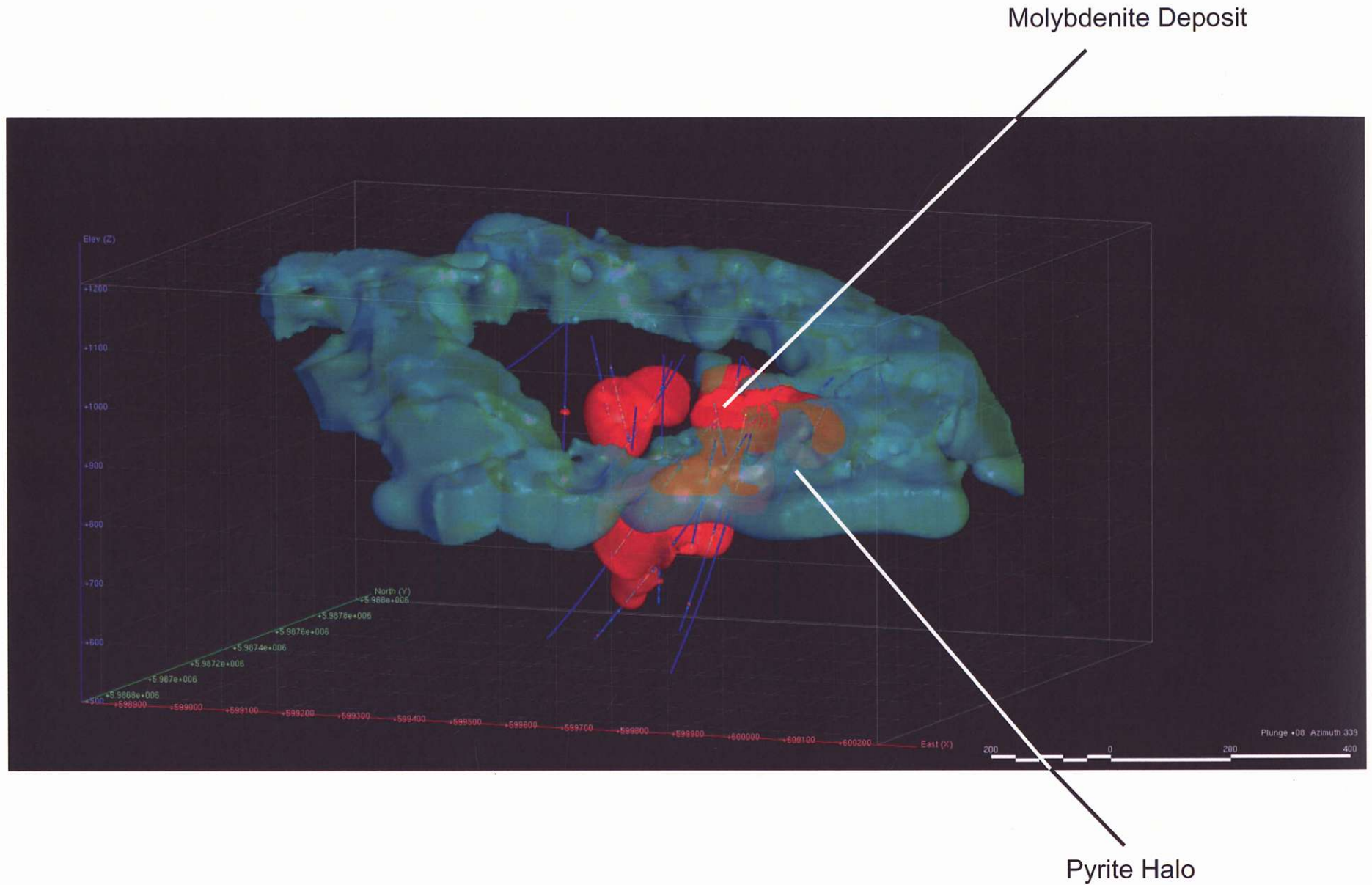


- 16,000 feet drilling Amax Exploration
- 10,000 feet drilling by New Cantech Ventures INC Summer 2005
- Drilling designed to confirm previous assay and outline 3-5 million ton open pit deposit

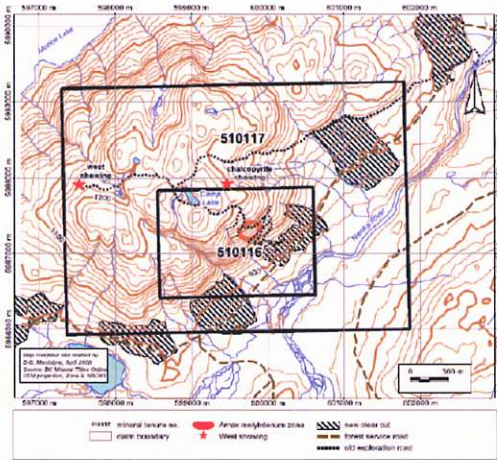
Drill Hole Locations

Fig. 6 Drill Hole Locations – Lucky Ship Property (after Godfrey, 1967)

Included Polarization Survey

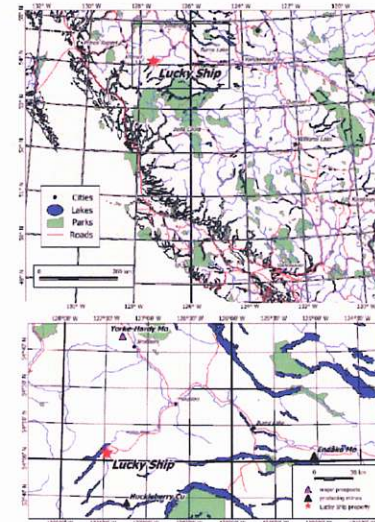


Lucky Ship Molybdenum Property



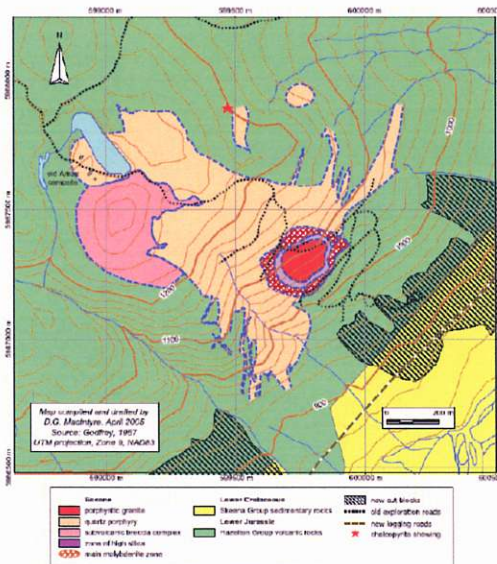
Claim Map

Fig. 2 Claim Map, Lucky Ship Property



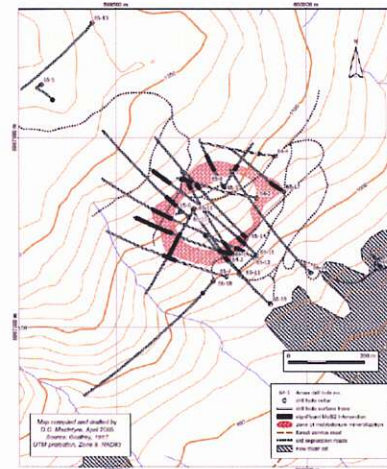
Lucky Ship Location

Fig. 1 Location of the Lucky Ship Property



Geology

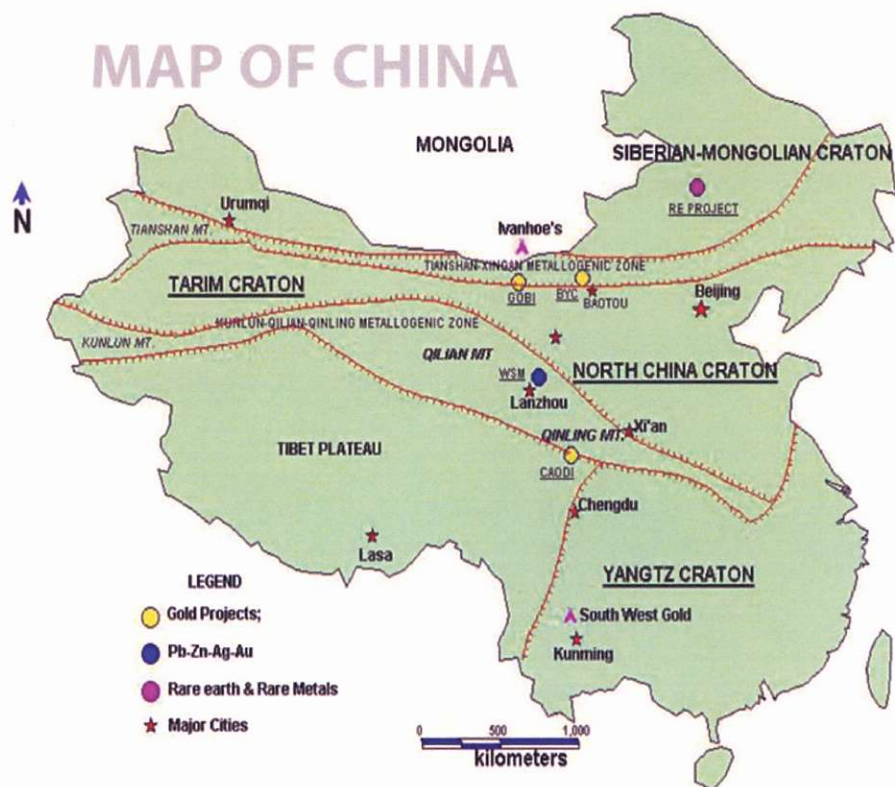
Fig. 4 Geological Map of the Lucky Ship Property (after Godfrey, 1967)



Drill Hole Locations

Fig. 6 Drill Hole Locations - Lucky Ship Property (after Godfrey, 1967)

BYC Project Location

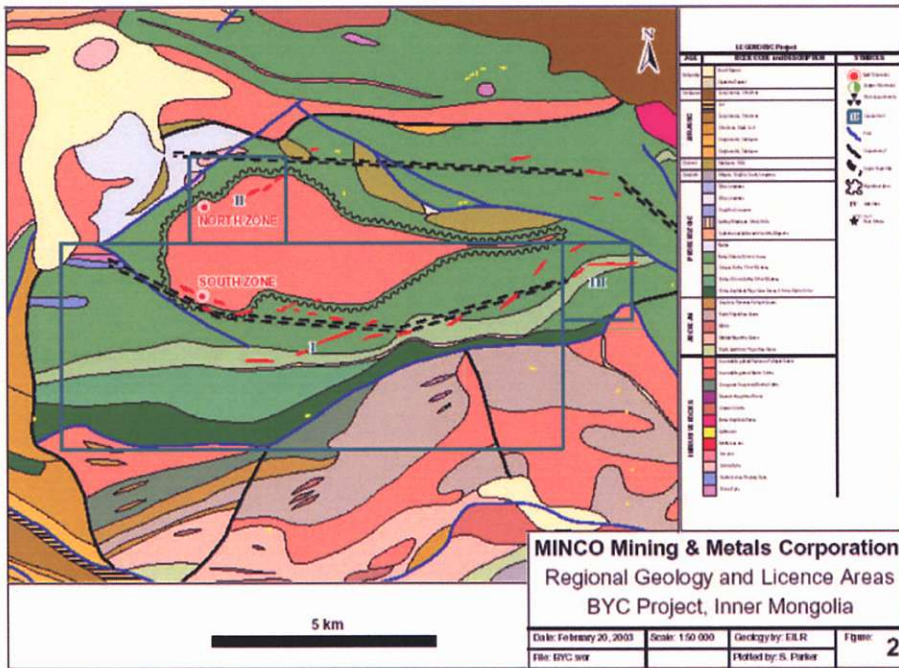


- Property located in Inner Mongolia, China, 150 km south of Ivanhoe Mines Tourquoise Hill project
- Road accessible

Location Map

Figure 1. BYC Location and Tectonic Map (taken from Oliver, 2003)

BYC Project Geology



- Property hosts 12 km of the Tian Shan gold belt which hosts the Maruntau (140 million ounce gold deposit)

Regional Geology

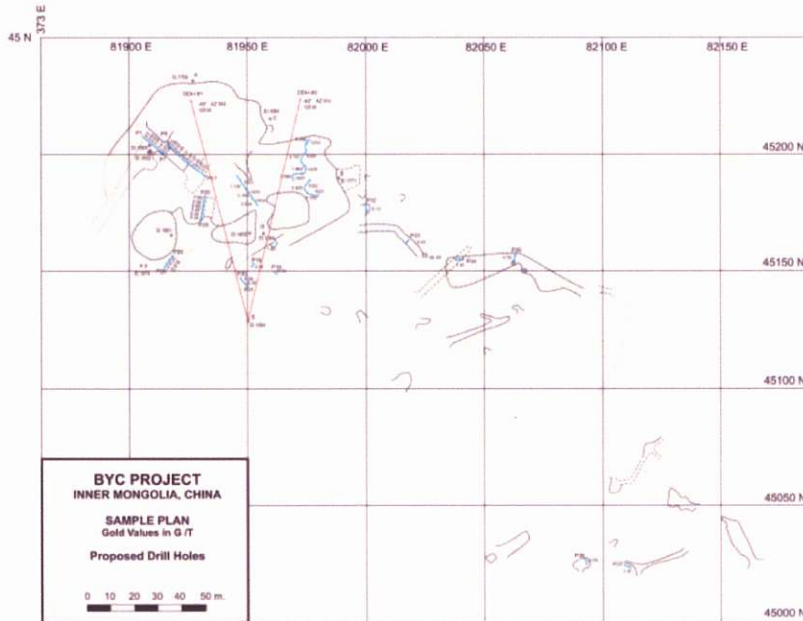
Fig. 2 Regional Geology and Licence Areas (from Oliver, 2003)

BYC Project North Pit



- 400,000 tons mined illegally grading an estimated 3 grams of gold per ton
- Trench sample in pit 9 metres 71 grams of gold per ton
- Drilling down dip of open pit zone

BYC – Drilling Results



Proposed Drill Holes

Fig. 5. North Zone Sample Plan, by P. Folk, P.Eng

- Property under option from Minco Mining and Metals
- Hole #6 1.72 m 38.08 g gold per ton
1.5 m 73.7 g gold per ton
- Hole #1 26.9 m 0.947 g gold per ton
- Hole #2 12.7 m 1.12 g gold per ton
- Hole #4 50.6 m 1.01 g gold per ton
- 3,000 m (10,000 foot) drill program planned 2005

OUTCROP SAMPLES

Sample	Cu ppm	Mo ppm	Au ppb	Ag ppm	Pb ppm	Zn ppm
231143	532	3	14	0.8	11	161
231144	1,243	5	180	6.6	45	112
231145	104	1	4	0.3	3	83
231148	21	2	1	0.3	3	49
231149	80	4	3	0.3	8	274
272693	1,866	14	36	1.8	8	94
560612	1,594	8	5	1.2	4	194
560613	6,019	12	10	5.2	8	133
560614	8,108	2	30	5.5	48	229
560615	974	4	520	8.7	132	191
560616	66	2	1	0.3	5	113
560617	1.54%	2	42	17.7	10	334
560618	29	4	50	0.5	13	234
560619	9.09%	10	220	41.3	13	260
560620	50	1	1	0.3	14	88
560621	434	1	445	4.7	48	913
560622	17	10	5	0.3	4	71
560623	31	19	21	0.3	5	152
560624	8,601	13	25	15.9	20	177
560626	40	1	1	0.3	9	305
560633	6	2	1	0.3	7	86
560634	14	4	1	0.3	4	31

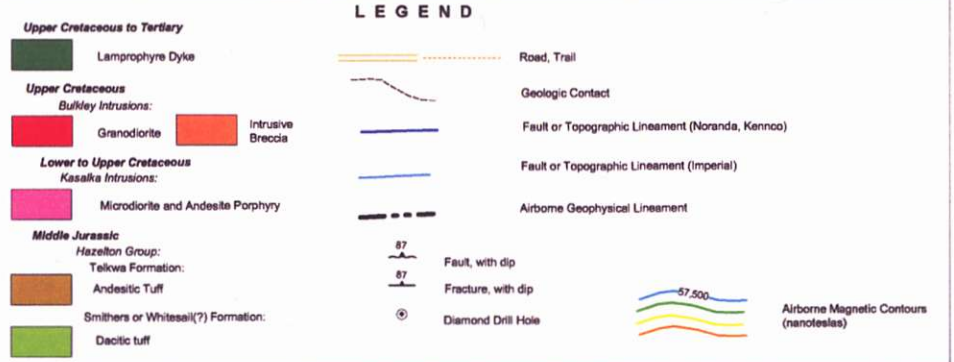
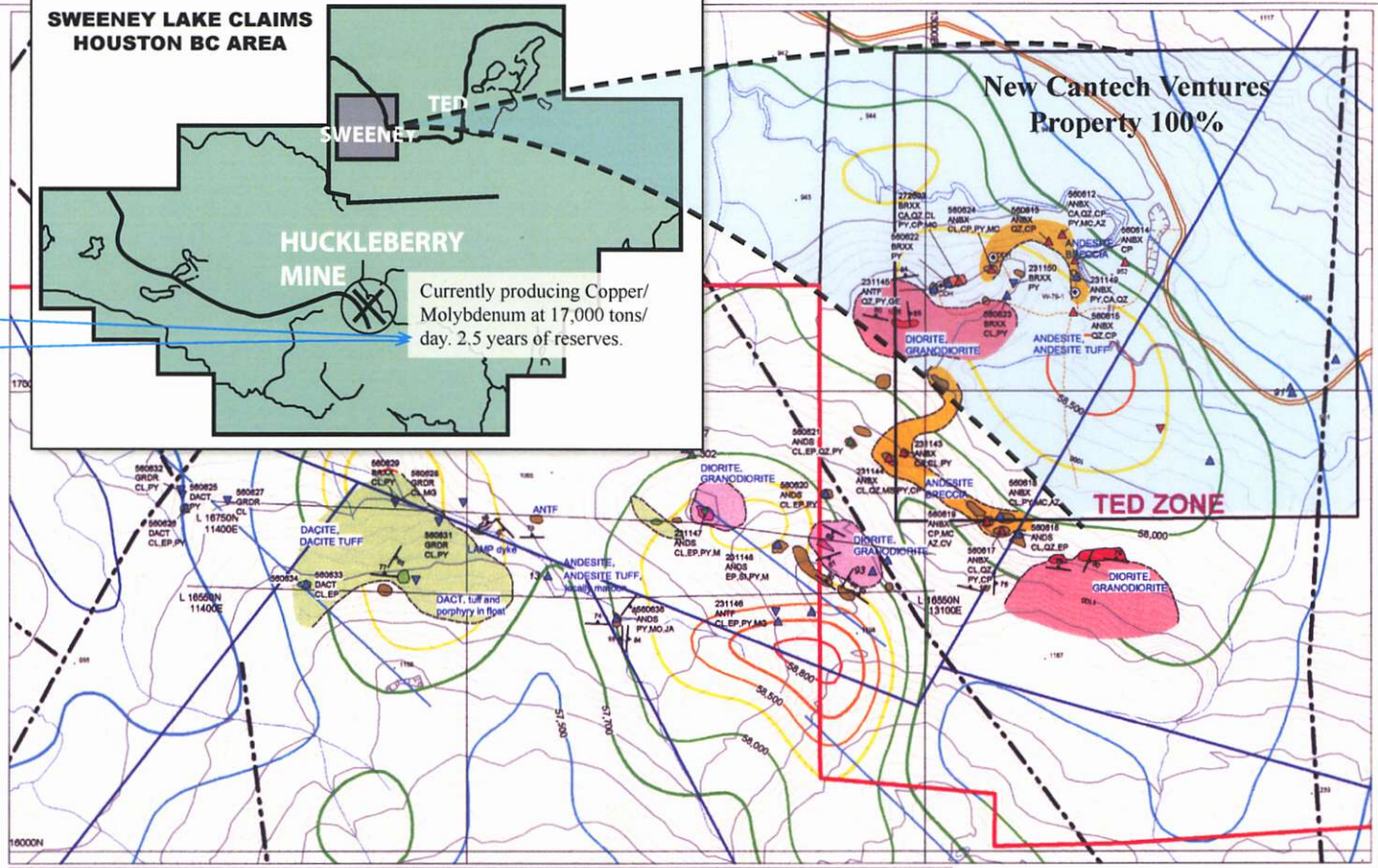
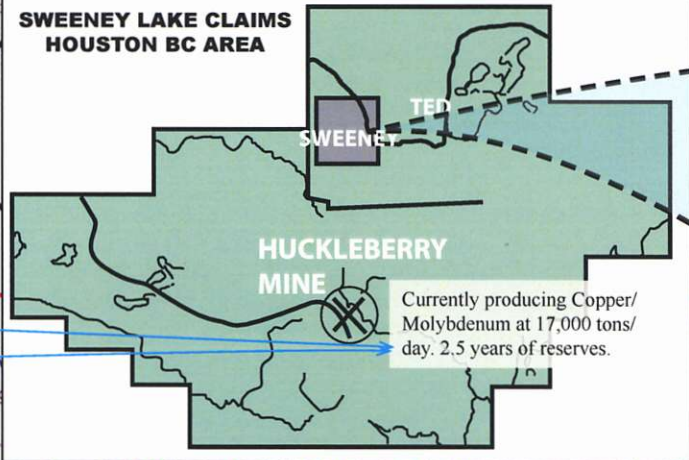
FLOAT SAMPLES

Sample	Cu ppm	Mo ppm	Au ppb	Ag ppm	Pb ppm	Zn ppm
231146	61	2	2	0.3	3	46
231147	197	1	2	0.3	7	69
231150	19	26	12	0.3	10	188
272651	1,023	18	2	0.7	3	61
560625	57	1	15	0.4	9	123
560627	7	1	1	0.3	4	36
560628	12	2	1	0.3	11	75
560629	59	2	4	0.3	17	84
560630	8	2	1	0.3	3	66
560631	8	1	1	0.3	6	78
560632	9	11	2	0.3	7	35
560635	3	1	1	0.3	22	96

Cu in ppm
Outcrop Samples
 ▲ > 1,000
 ▲ 500 to 1,000
 ▲ 135 to 500
 ▲ < 135

Float Samples
 ▼ > 1,000
 ▼ 500 to 1,000
 ▼ 135 to 500
 ▼ < 135

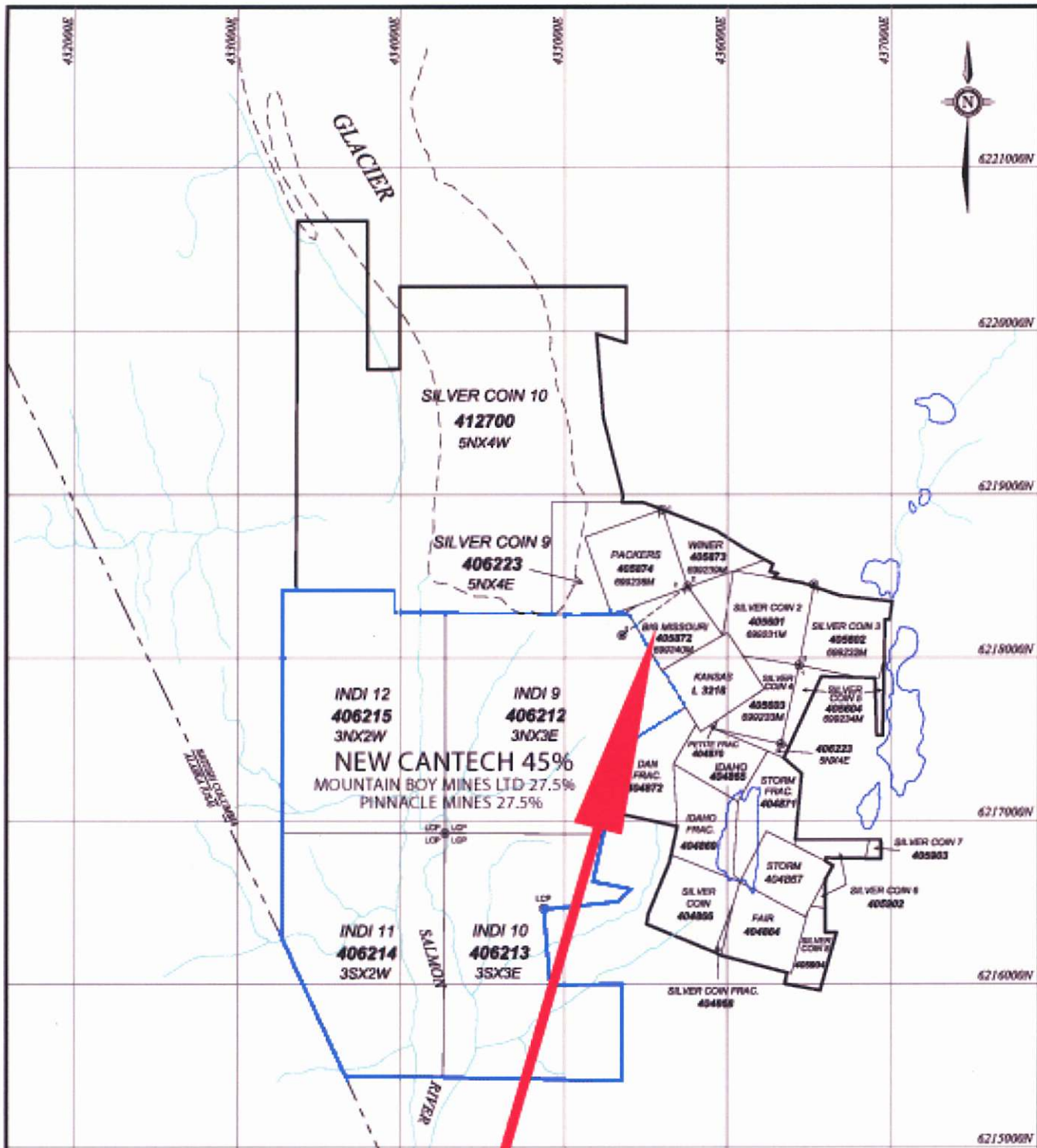
560630 ANDS CL, EP, PY 2001 Rock Sample (Sample No., Lith, Min)
 25 Pre-2001 Rock Sample (ppm Cu)



Huckleberry Mines Ltd.

**Ted Zone
 Geology and Geochemistry**

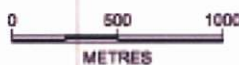
Date:	Sept. 2001	NTS Sheet:	93E/11E	FIG
Drawn By:	KH,RS,SH	Scale:	1:10,000	5



Drilling intersects 50' of 1 oz gold/tonne and 6 oz silver/tonne within a 250' intersection of 0.207 per tonne gold (news release August 24/2005 Pinnacle Mines)

To accompany report by A.Walsh

NEW CANTECH		
SILVER COIN PROJECT		
SKEENA MINING DIVISION		
CLAIM MAP		
NTS: 1048/10 1048/00	SCALE: As shown	FIGURE: 2



Management

Dalton Dupasquier

President & Director

Former Stockbroker & Former Director, Manitoba Mineral Resources, former director Winspear Resources. Winspear was taken over by De Beers Diamonds for \$300 million cash.

Ross Ronald Blusson, Geologist

Chairman & Director

Discovered Equity Silver Mine deposit.

Richard W. Grayston, PHD, MBA

Director

James D. Jacuta, LLB

Director

William Meyer, P.Eng. Geologist

Director

Former Vice President Teck Corporation and Chairman of Minco Mining and Metals Corporation.

Share Structure

Share Capital:

Issued	22,000,000
Property Acquisition	2,000,000
Options	893,000
Warrants	5,599,371

Symbol: NCV
Listed: TSX Venture Exchange