

FIG. 1

KERR ADDISON MINES LTD	
KENNEDY RIVER AREA	
PROPOSED DRILLING	
SCALE - 1 : 50 000	DATE - MAY, 13, 1987
NTS - 92 F/3W	REVISED -

826996

LCP TOMMY  
4E-4S

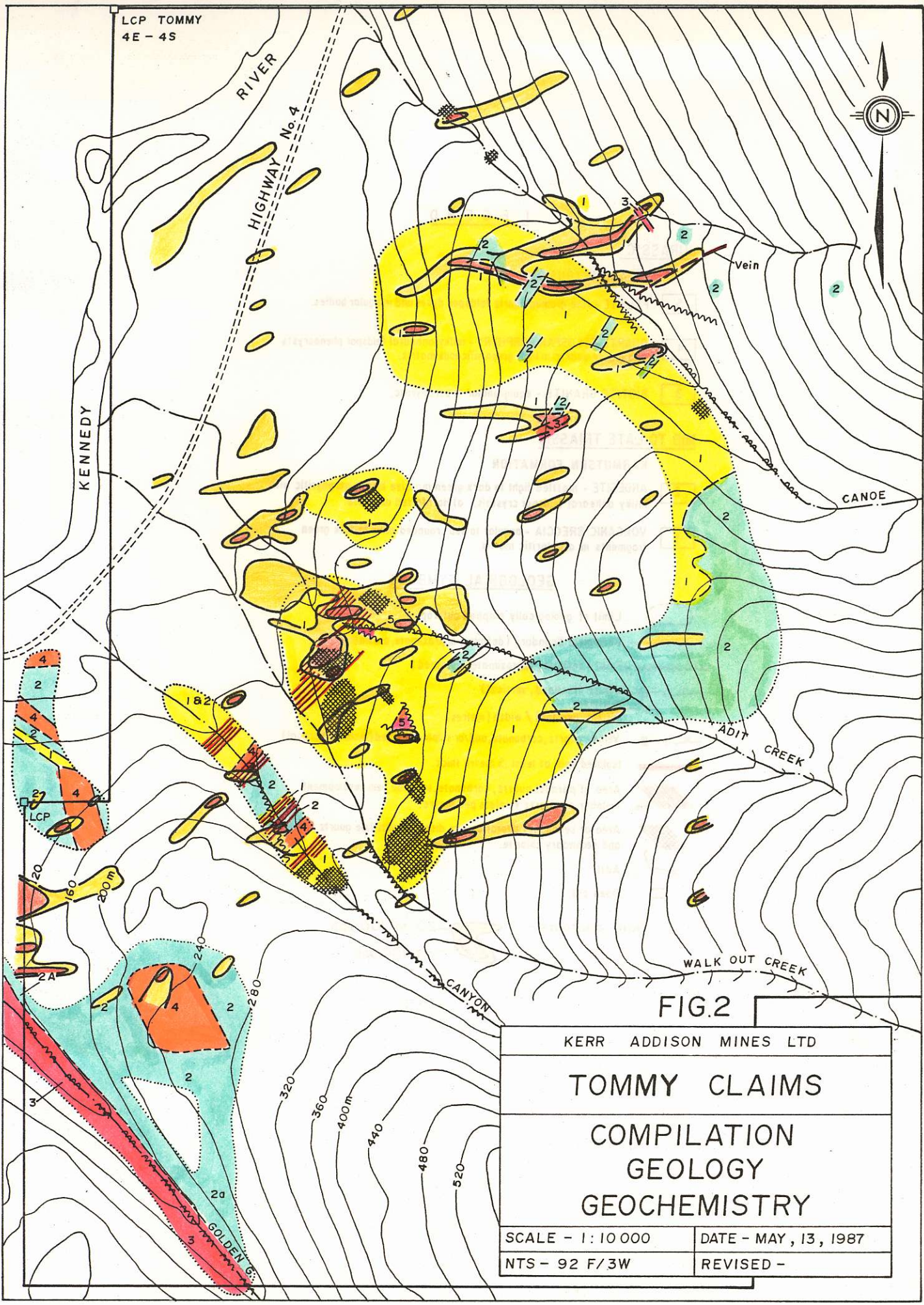


FIG.2

KERR ADDISON MINES LTD	
TOMMY CLAIMS	
COMPILATION	
GEOLOGY	
GEOCHEMISTRY	
SCALE - 1:10 000	DATE - MAY, 13, 1987
NTS - 92 F/3W	REVISED -

## L E G E N D

### JURASSIC

#### ISLAND INTRUSIONS

5 FELSITE - fine grained quartz feldspar dykes and irregular bodies.

QUARTZ FELDSPAR PORPHYRY - milky anhedral feldspar phenocrysts and glassy quartz in light green siliceous matrix.

8IOT1TE 6RANITE - equigranular !o porphyritic.

### MD TO LATE TRIASSIC

#### KARMUTSEN FORMATION

ANDESITE - mottled light to dark green massive locally porphyritic with milky anhedral feldspar crystals, a) Hornfelses andesite.

VOLCANIC BRECCIA - angular to sub-rounded olive to dark green fragments in a chlorine matrix.

## GEOLOGICAL SYMBOLS

- r' ) Limit of geologically mapped outcrop.
- . \* Geological Boundary (definite, approximate, assumed)
- if* fault [definite, approximate, assumed 1
- i — **fl**— Joints (inclined, vertical)
- V E I N S
- Au icz per ton)/width (metres)
- Veins - quartz .carbonate, and/or sulphide hecled£inclined, vertical)
- Isolated vein at least .5 metre thick.
- Area of parallel quartz, carbonote, sulphide vein development
- Number of quartz veinlets per metre.
- Area of secondary alteration - as discontinuous fine quartz veinlets and secondary chlorite.
- Adit
- Open cut
- Gold contours - )—20 to 100 ppb
- 100 ppb