

# CORPORATION FALCONBRIDGE COPPER

Anaconda 926/  
826098 11

MEMORANDUM

DATE: August 31, 1983  
À TO: D. H. Watkins  
COPIES À COPIES TO: M. J. Knuckey, B. D. Simmons, P. R. Mattinen  
DE FROM: A. J. Davidson  
SUJET SUBJECT: B C EXPLORATION PROGRESS REPORT - AUGUST 1983

---

PN 082 - B. C. General

Anaconda - Britannia

Anaconda are inviting proposals on all of their ground in the Britannia area (379 claims). A large portion of this was recently visited by DHW and AJD. The area visited, known as Furry Creek, is the strike extension of the Britannia "Shear Zone" which hosted all of the Britannia orebodies. The quartz-sericite-pyrite schist, which defines the shear is undoubtedly an alteration zone possibly forming the footwall to the deposits. The zone and the contact along which many of the orebodies occur remains unexplored for a 2 km strike length although IP anomalies occur over much of it. No other geophysics have been done. Good felsic-intermediate pyroclastics, domal features and flows complete the Furry Creek package. Good pillowed basalts appear to cap this overturned sequence.

Outcrop in the area varies from poor to excellent. No work has been done by Anaconda since 1974 except for some recent mapping. An initial program would include linecutting mapping and DEEPEM and would cost approximately \$150,000.

The other half of the property, the Indian River area, will be visited the week of September 12.

Based on its status as a past producing area, the excellent geology and alteration seen, the lack of exploration in the past 10 years and the easy accessibility, the Furry Creek area would make a perfect CFC-type project with an excellent chance for discovery.

An exploration proposal will likely be made to Anaconda following the Indian River visit.

### JJ/JS Claims, Chemainus Vancouver Island

IDP visited this property 7 km north of our Mt. Sicker holdings. Veins of sphalerite galena, pyrite and minor chalcopyrite occur in basal Sicker volcanics. Grab samples of the best sulphides have returned up to 21% Zn and 5 oz/ton Ag. However the veins are generally less than 5 cm thick. This plus the fact that the veins are exposed in roadcuts in a subdivision suggests that we take no further action.

### Rebar Showing, Revelstoke

Assay results were received from this showing which was visited in June. The assays are:

Cu%	Zn%	Pb%	Ag oz/t	Au oz/t
.004	0.61	.08	0.10	0.023
.006	1.14	.01	0.10	0.02
.045	5.15	.03	0.30	0.023

No further action was or will be taken on this property.

### PN 201 - Harrison Lake Reconnaissance

The Mount Woodside area and the Harrison Formation rocks on the west side of Harrison Lake have emerged as the highest priority targets in this program. The best target in these areas remains the Seneca deposit. Compilation evaluation and interpretation of the data collected is presently ongoing. A final report will be ready in October.

### PN 202 - Vancouver Island Reconnaissance

The Dighem III survey scheduled for late August is supposed to start between September 7-12. Some reconnaissance work has been going on in the Mt. Richards and Mt. Brenton area near Duncan. Follow up will continue after the Dighem survey.

A final report should be ready in October-November.

PN 203 - North Forks - McCallum Option NTS 92H/12

A 6 person mapping and sampling program covered the entire claim block in a reconnaissance manner and the area around the showing in more detail. The showing occurs in a distinct fault bounded package of basic volcanics overlain by argillites and biotite schists (greywackes). This package is between 700m - 1000m thick and has a strike length of approximately 6 km. The showing itself occurs in a faulted block of this package that is 300m thick by 1.5 km long. Although there is no widespread alteration associated with the showing there is good chlorite-garnet-epidote alteration for a distance of 7 metres below the massive sulphides. The massive sulphides plunge about 80-85° south and are likely to be rod-like based on the degree of stretching observed in pebbles in the area (20:1). The previous drilling thus would have only intersected the sulphides in one of the four holes drilled. This hole intersected 2.04% Cu, 0.98% Zn and 9.17 g/t Ag over 3 metres. Surface Pulse EM is planned for the fall over the showing. This could be followed up by a drilling program to test to 300 metres if logging activities permit. Obviously both grade and thickness would have to improve down plunge.

The only other areas worthy of interest in the belt are some chloritized basic volcanics with up to 5% disseminated pyrite in cubes and a zone 500m wide of mixed intermediate to felsic volcanics and graphitic-argillaceous sediments. No exhalites were found although some mineralization was found associated with qtz sericite margins of intrusives. No further work is planned outside the showing area.

PN 204 - Postuk Fulton Option

Mapping, sampling and relogging of core continued through the month. It now appears that the diorites (younger than the volcanics and Lenora-Tyee orebodies) are not as infolded with the volcanics as previously thought and in fact are almost flat lying. Also both the Lenora-Tyee horizon and the stratigraphy mapped at the Lenora pit can be conclusively traced to a zinc showing on the Postuk-Fulton property. Since plunges on the property are flat lying excellent potential exists along the plunge to the east.

Lithogeochemical sampling has been completed on the property and results are awaited. Pulse EM and some drilling is planned for the fall.

PN 205 - Peppa Option

Some mapping and sampling in the immediate area of the Lenora pit has commenced. The Lenora orebody was concentrated in the nose of a drag fold and was faulted off down dip to the south. However the throw on this fault is such that the faulted off ore may still be further down dip. This would represent a potential target area.

PN 208 - CFC-Mt. Sicker

No fieldwork was carried out during August. The Peppa agreement has been signed and the Lieberman agreement is being drafted. An Agreement has been reached with the Municipality of North Cowichan for their base metal rights and approaches have been made to Pacific Logging and Fording Coal to acquire their base metal rights.

A house has been rented in Duncan on a month to month basis to serve as office and accommodation.



Alex J. Davidson

AJD/ik

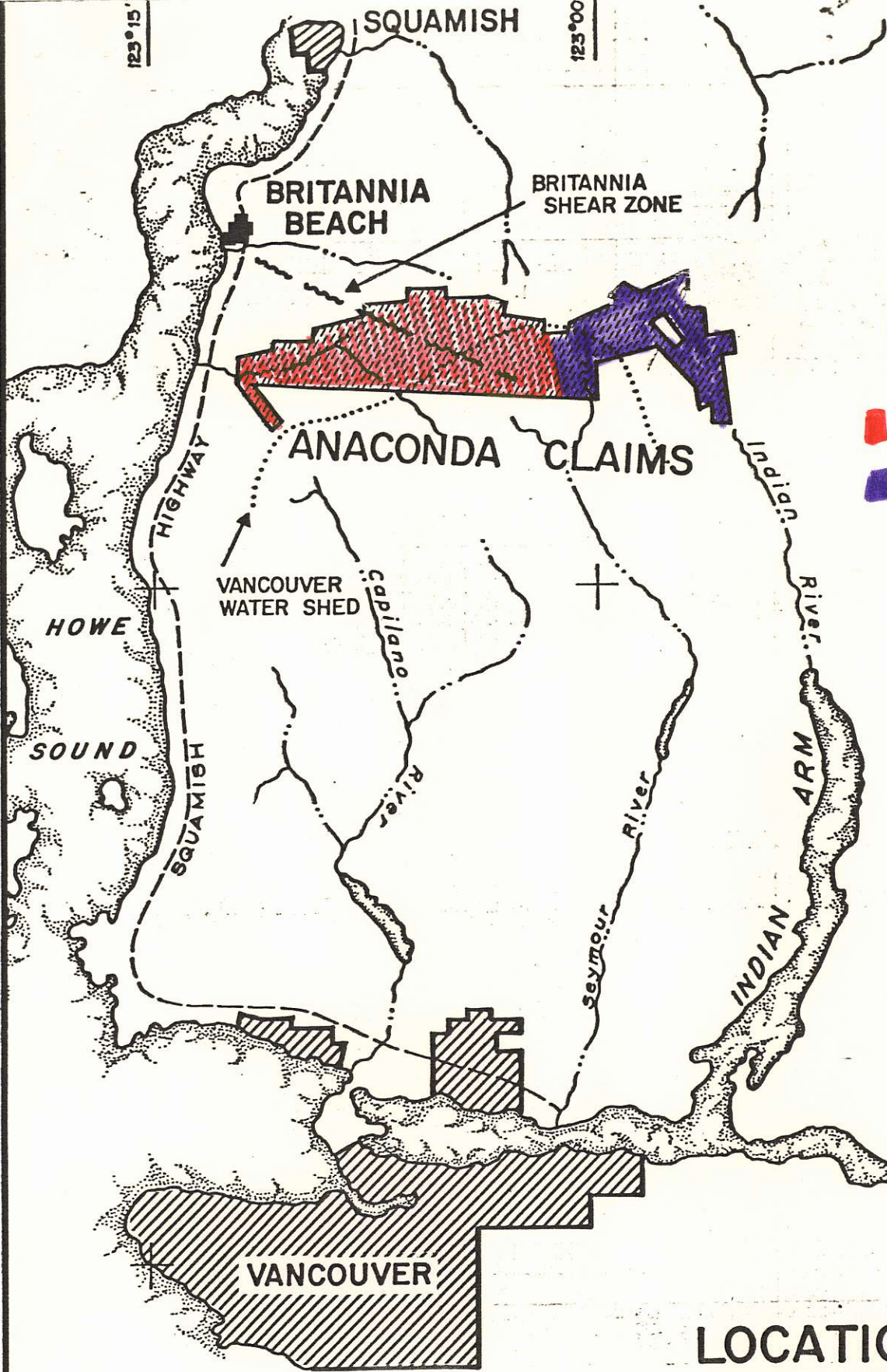
BRITISH COLUMBIA EXPLORATION

ESTIMATED COST AND FORECAST OF EXPENDITURES

<u>Project</u>	<u>Est'd costs to August 31, 1983</u>	<u>Forecast Costs to Dec. 31, 1983 (000'0)</u>
PN 082 B. C. General	98.6 66.8	275.0
PN 201 Harrison Lake Recon.	112.1 76.0	100.0
PN 202 Vancouver Island Recon.	107.3 72.8	110.0
PN 203 McCallum - North Forks Option	34.3 22.0	90.0
PN 204 Nugget Creek Group, Postuk-Fulton Option	67.7 45.9	125.0
PN 205 Peppa Option	13.1 8.9	250.0
PN 206 Adams-Barriere Recon.	.5 .3	40.0
PN 207 Lieberman Option		10.0
22		
<b>Totals</b>	<b>433.6</b>	<b>1000.0</b>

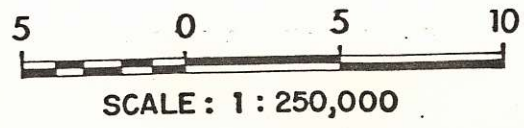
Note: Project totals include Regional Office costs.

R O 137.6  
 Mgmt 69.3  
 Equip 20.4  
 Sal. 8.7



- FURRY CREEK AREA
- INDIAN RIVER AREA

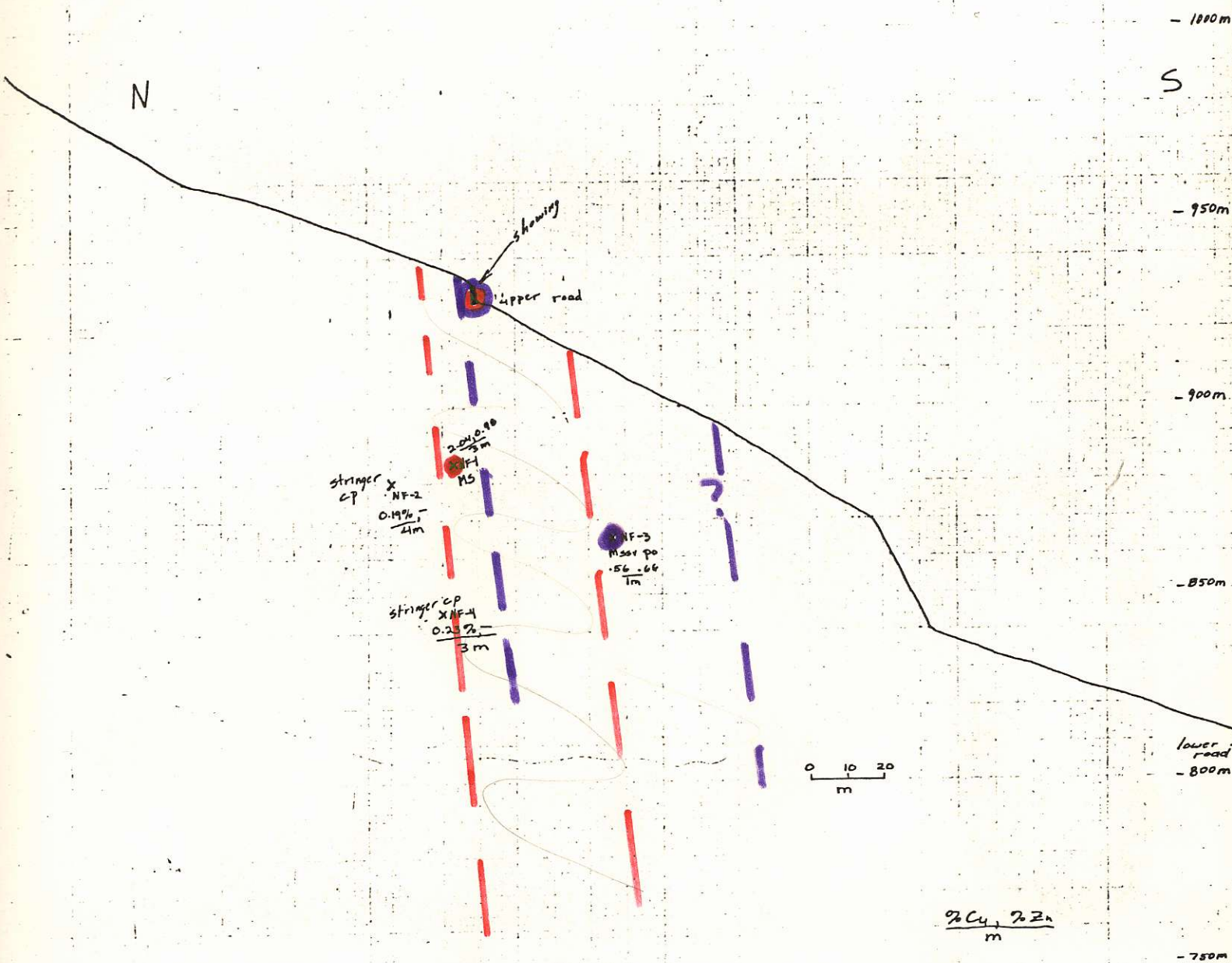
# LOCATION PLAN



BRITISH COLUMBIA                      CANADA

**ANACONDA CANADA EXPLORATION LTD.**





HANGINGWALL PYRROTITE LENS.



MAIN PYRITE-CHALCOPYRITE LENS

North Fork Showing  
 Vertical Longitudinal Section  
 Looking  $080^\circ$   
 Aug. 31/83

LM