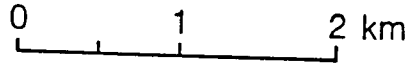
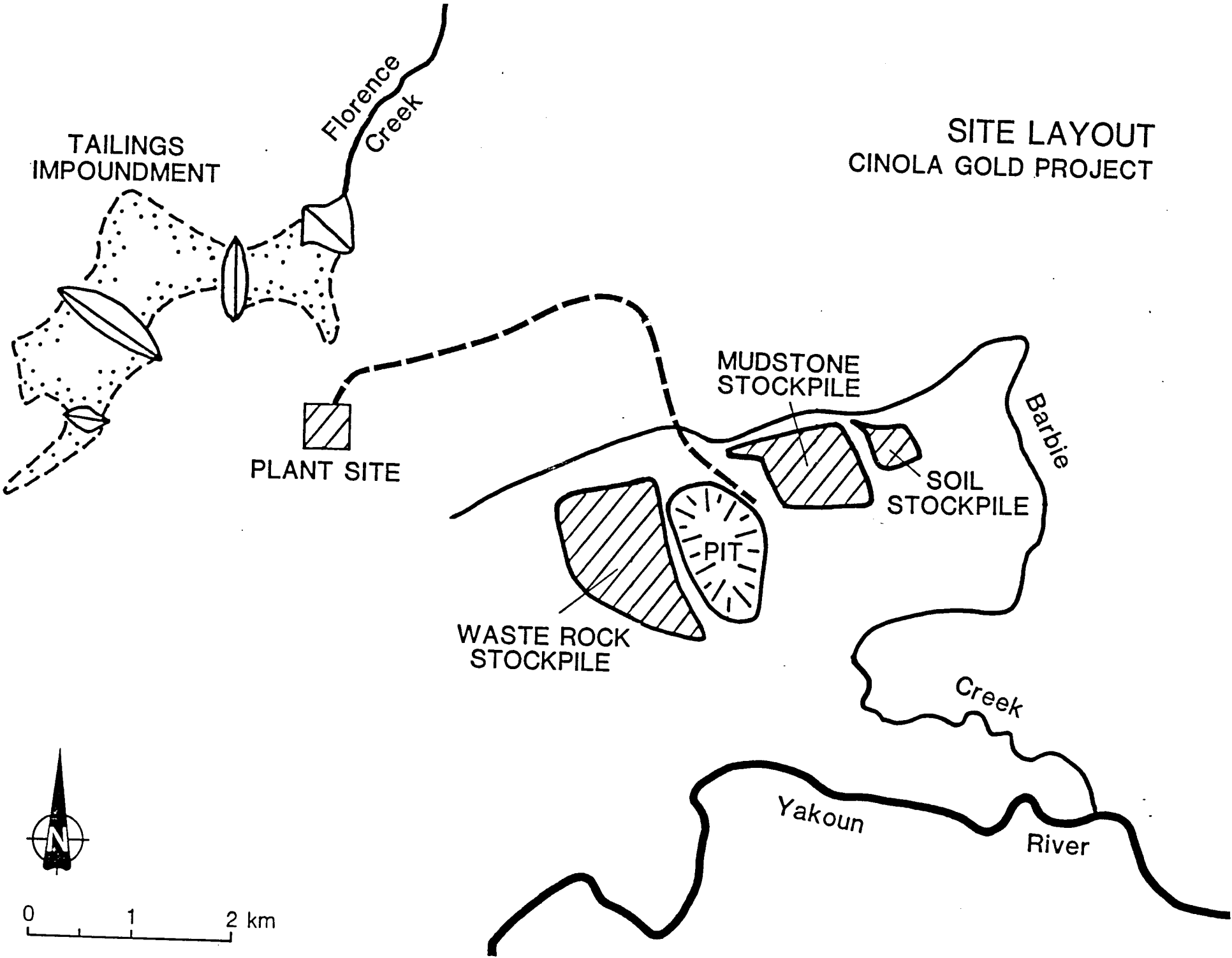
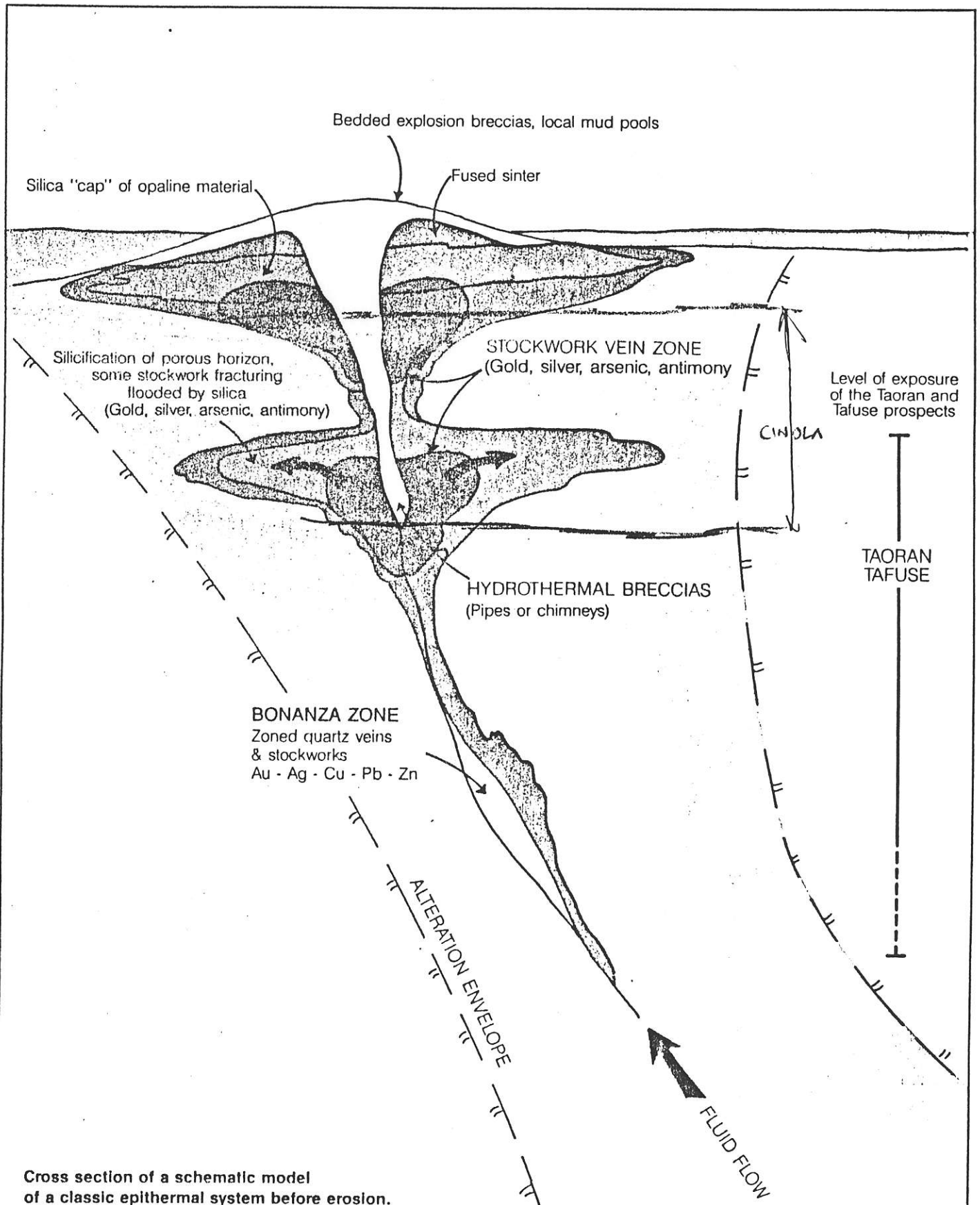


**LOCATION MAP
CINOLA GOLD PROJECT**

825932 103F/9

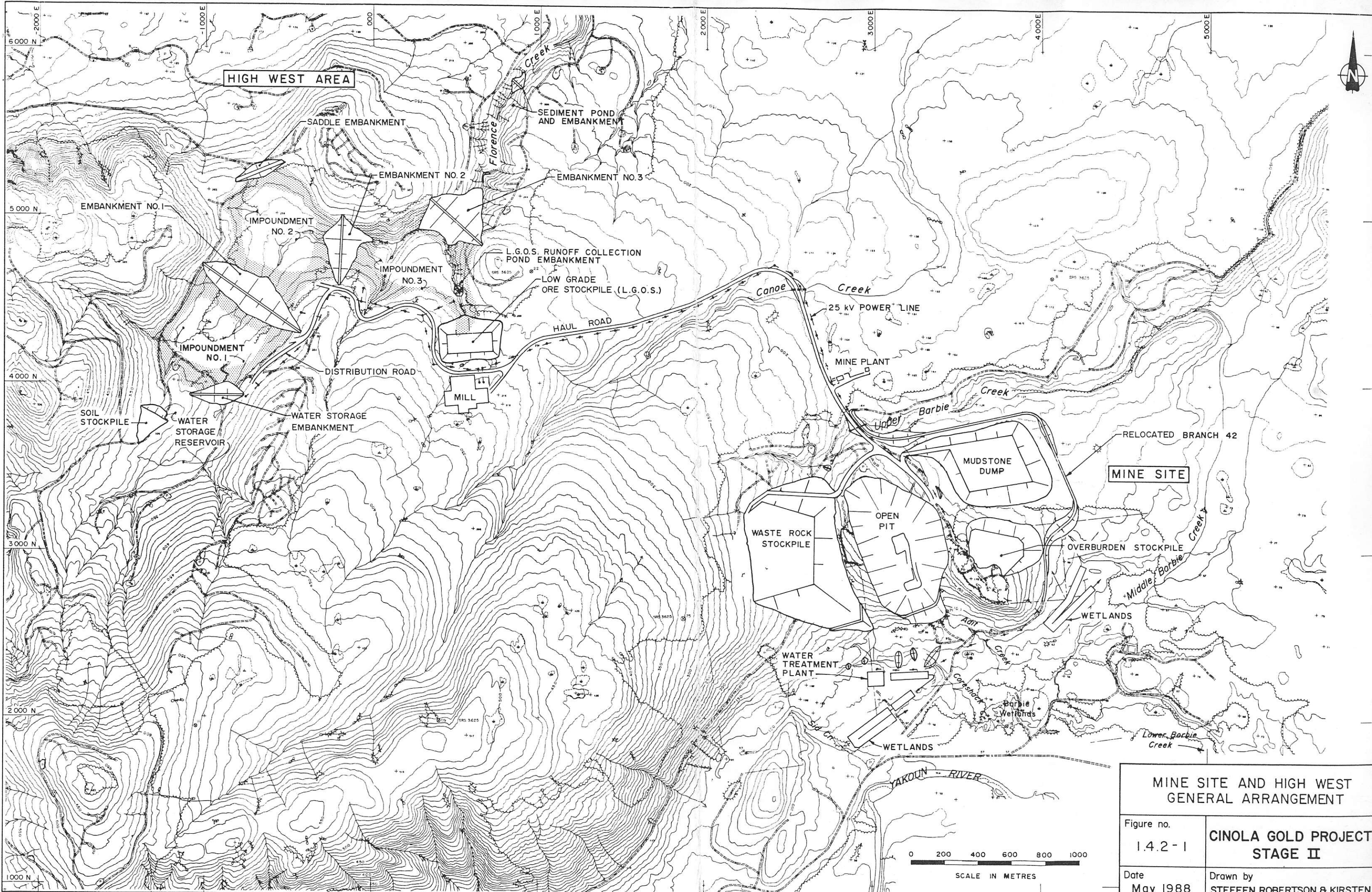
SITE LAYOUT CINOLA GOLD PROJECT



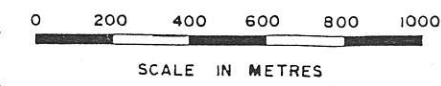


Cross section of a schematic model
of a classic epithermal system before erosion.

NEAR H 627 150-250°C



MINE SITE AND HIGH WEST GENERAL ARRANGEMENT	
Figure no. 1.4.2 - 1	CINOLA GOLD PROJECT STAGE II
Date May 1988	Drawn by STEFFEN ROBERTSON & KIRSTEN



CITY RESOURCES (CANADA) LTD.

GENERAL OPERATING FLOW-SHEET

