

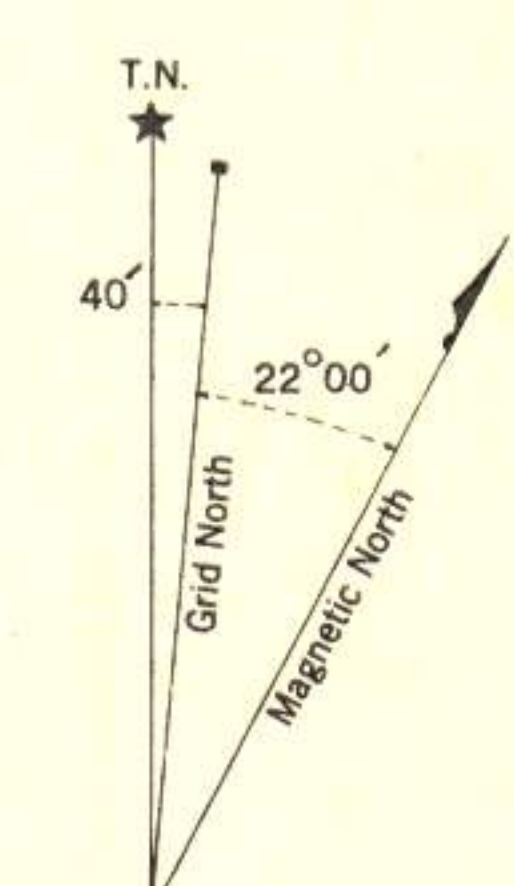


CANADA  
DEPARTMENT OF NATIONAL DEFENCE  
ARMY SURVEY ESTABLISHMENT

REFERENCE

- Roads:  
 hard surface, all weather: more than 2 lanes Part. completed  
 hard surface, all weather: 2 lanes  
 loose surface, all weather: more than 2 lanes  
 loose surface, less than 2 lanes: All weather Dry weather  
 Special, Snow Road, etc.: Cart Track Footpath Trail Cart track Footpath or Trail
- Railways:  
 standard gauge, multiple track  
 standard gauge, single track  
 narrow gauge, multiple track  
 narrow gauge, single track  
 Tramway: on Road
- Bridge, underpass or overpass
- Boundary, International  
 Province or State  
 County or District  
 Township, Seignior or Parish  
 City or Town  
 Reservation, Indian, Military, etc.
- Electric Power Line  
 Telephone, trunk route  
 Triangulation Station  
 Boundary Mon. Survey Mon.  
 Bench Mark  
 Spot Elevation, (in feet)  
 House, Barn  
 Buildings  
 Mill or Factory, small, Saw Mill, etc.  
 School  
 Church  
 Post Office  
 Telephone Exchange  
 Mine or Open Cut  
 Cemetery or Churchyard  
 Quarry  
 Sand or Gravel Pit  
 Cliff  
 Cutting  
 Embankment, Dump, etc.  
 Lighthouse  
 Wharf or Pier  
 Foreshore Flats  
 Swamp or Marsh  
 Lake or Slough, intermittent  
 Glacier or Snowfield  
 Stream, intermittent  
 Irrigation Canal, Ditches  
 Inundated Land  
 Contours, elevation  
 depression  
 approximate  
 Relief, not indicated by Contours  
 Wooded Areas, heavy  
 light  
 Camera Station, elevation in feet

*Line of Flying = 50 mi*



Use diagram only to obtain numerical values.  
 APPROXIMATE MEAN DECLINATION 1950  
 FOR CENTRE OF SHEET  
 Annual magnetic change 4' westerly

TO GIVE GRID REFERENCE ON THIS SHEET  
 FIGURES: IGNORE THE SMALLER figures printed around the margin  
 of the map. These are the figures printed on the face of the map, viz. 512

**AEROMAG FLIGHT LINES**  
**DEWAR CREEK PROJECT**  
**1971**

POINT	East	North
Cabin	69	135
FOR STANDARD MILITARY GRID REFERENCE	698	135
STANDARD MILITARY GRID REFERENCE	698135	(To nearest 100 Metres)
Nearest similar grid reference: 100,000 Metres (Approximately 63 Miles)		

TEN THOUSAND METRE  
 UNIVERSAL TRANSVERSE MERCATOR GRID  
 ZONE 11

INDEX TO ADJOINING SHEETS

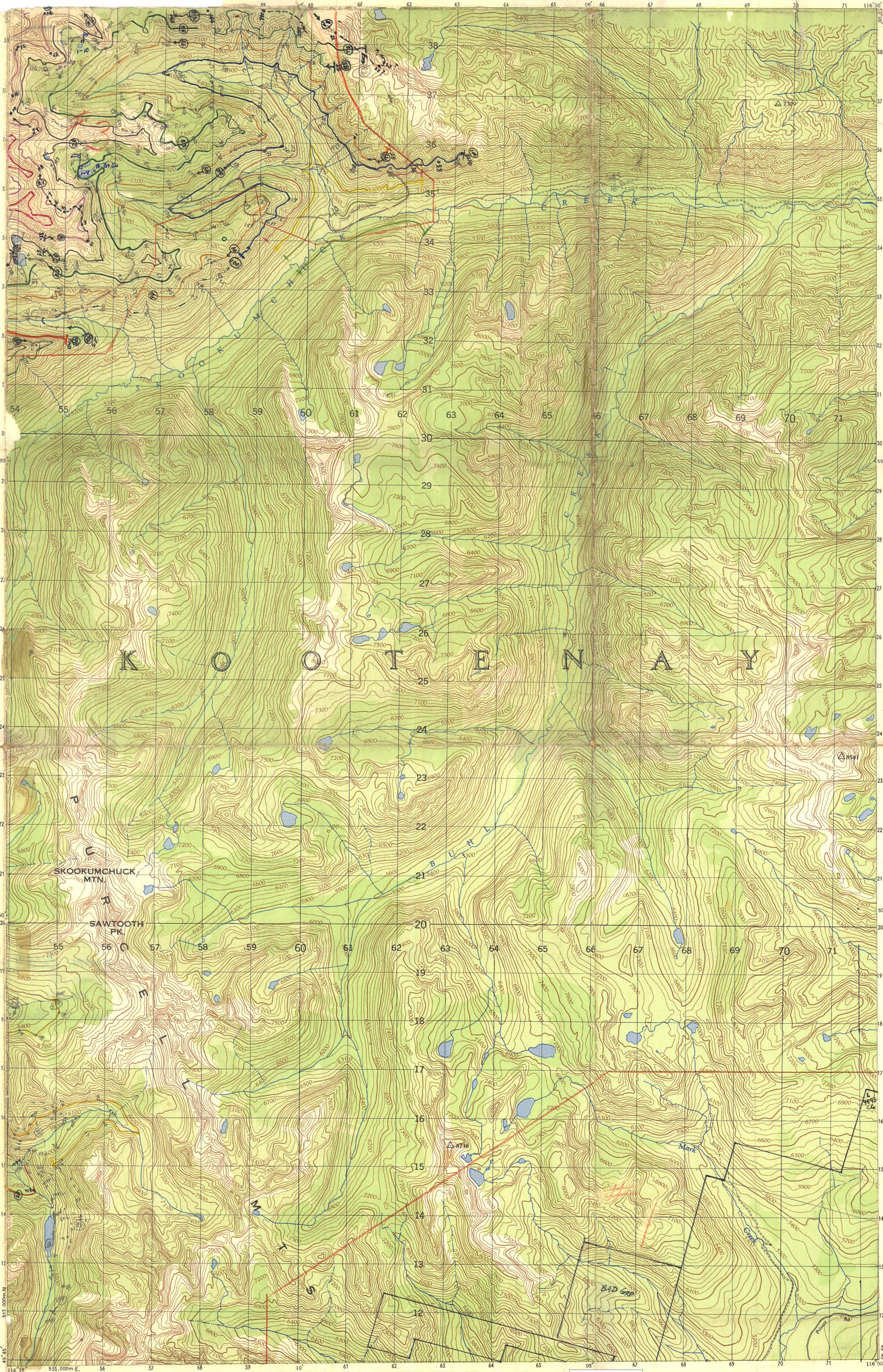
82 1/2	82 1/4
82 5/8	82 3/4
82 7/8	82 1/2

See "Index to Maps Available" for sheets published.

Note: Copies of this map required for official purposes may be obtained from the Army Survey Est. and Ottawa.  
 The general public may obtain copies from the Map Distribution Office, Dept. of Mines and Technical Surveys, Ottawa, at 25 cents per copy.

DEWAR CREEK  
 82 1/16 EAST HALF  
 FIRST EDITION  
 825292

*Dewar Creek Project, 1971, Aeromag Flight Lines*



Surveyed, compiled, drawn and printed by the Army Survey Est. R.C.E. 1949-51. Aerial photography by R.C.A.F. 1948. Published 1951.

