

### GEOLOGY OF THE CITY OF PARIS AREA

	TERTIARY INTRUSIONS, BIOTITE MESOCRATIC DIORITE / MELANOCRATIC DIORITE
	SERPENTINE
	QUARTZ PORPHYRY / PYRITIC SELVAGE PHASE
	ANDESITIC AND DACITIC VOLCANIC ROCK

#### SYMBOLS

	BED ROCK EXPOSURE		SHAFT
	SCHISTOSITY		PORTAL, UNDERGROUND WORKINGS
	CLEAVAGES AND JOINTS		ROAD
	GEOLOGICAL CONTACT		BUILDING; OCCUPIED, UNOCCUPIED
	TOPOGRAPHICAL CONTOUR (50' interval)		PY
	DIAMOND DRILL HOLE, INCLINED, VERTICAL		CHPY
	TRENCH		MAL
	DUMP		■ CLAIM POST
	PIT		

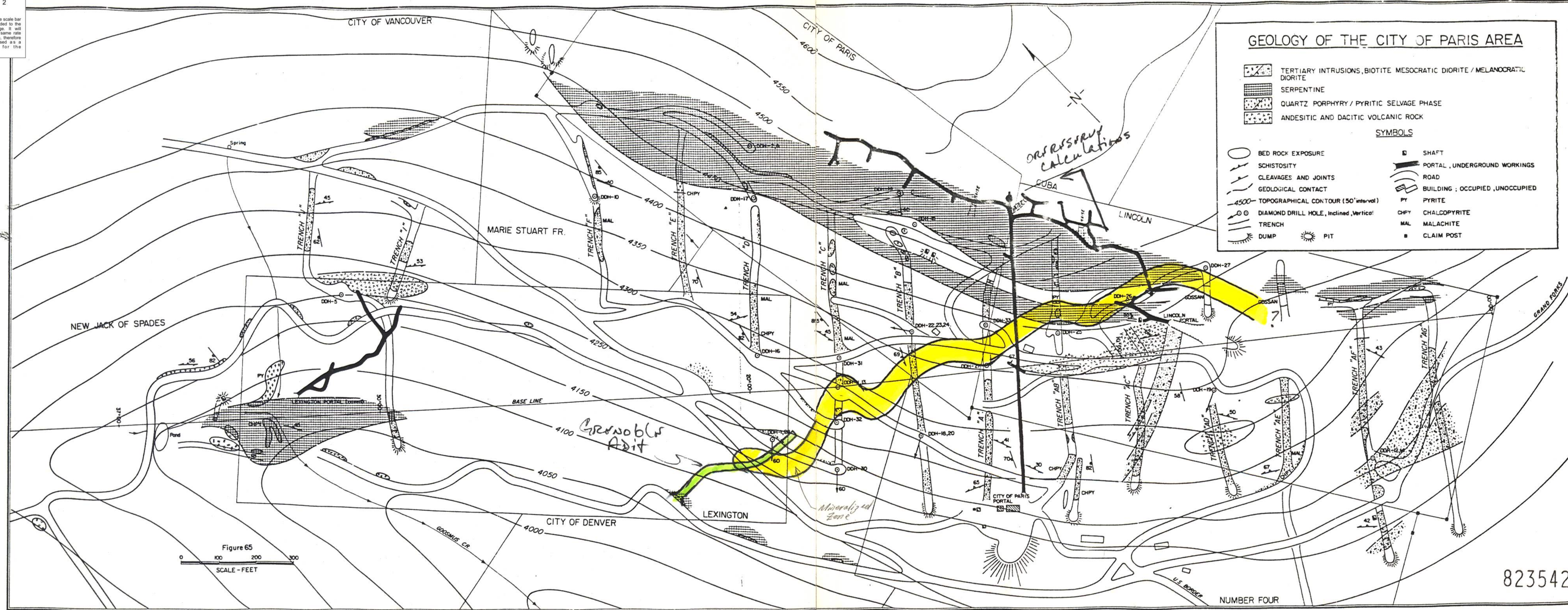


Figure 65  
SCALE - FEET  
0 100 200 300

823542

NUMBER FOUR