

CORPORATION FALCONBRIDGE COPPER

MEMORANDUM

DATE: January 7, 1985
 TO: D. H. Watkins
 COPIES TO: M. J. Knuckey, L. D. Pirie
 DE FROM: A. J. Davidson
 SUJET SUBJECT: Rea Gold/Austin-Apex Preliminary Drill Proposal January 1985

Nine drill holes totalling 2400 metres are proposed to test geological, geophysical and geochemical targets on the Rea Gold, Austin Apex and Kamad Options. These holes are designed to test the best targets on all three options and to insure that no obvious targets or easy orebodies remain after completion of the program.

Three drill holes will test the strike extension of the Rea Horizon and the Gold zone on the Austin/Apex ground. Four holes will test the Rea Horizon on the Rea Gold Option and two holes will test the Rea and/or the Homestake Horizon on Kamad 7.

Specific proposals are as follows:

AUSTIN/APEX (350 m.)

P1 (L72-L74? 150m.) will test the strike projection of the Rea Horizon on Austin/Apex ground. A MaxMin II survey to be carried out in January will determine the exact location of the hole (Fig. 1,6).

P2 and P3 (L63, 1+45S and L65+50, 1+40S, 2 X 100 m.) will test the downdip extent of a 900 m. long zone of intensely carbonatized basalts which contain anomalous gold values of up to 1430 ppb in soils. The holes will test the zone 250 m. apart and will intersect the zone at a depth of 50-75 metres (Fig. 2,6)

REA GOLD (1750 m.)

P4 (L9950, 450 m.) will test 500 m. downdip of the present Rea deposits and 250 m. downdip of any previous drilling. The hole will be testing an area of increasingly high barium in the Rea hangingwall. High barium values in the immediate hangingwall are present near the RG 8 lens, the L100 lens and in holes RG-26, RG-27 and RG-31. This hole has an excellent chance of intersecting a new lens (Fig. 3,6).

P5 (L91, 1000 m.) This hole is designed to intersect the Rea Horizon on the Rea Gold Option where the horizon intersects a strong lithochemical ($\text{Na}_2\text{O} < 2\%$, $\text{Zn} > 100$ ppm, $\text{Ba} > 500$ ppm) anomaly thought to represent a crosscutting alteration pipe (Figs. 4, 5, 6).

P6 and P7 (L103 - L113, 2 X 150 m.) are designed to test MaxMin II anomalies associated with the Rea Horizon downhill along strike to the northwest from the Rea deposits (Fig. 6).

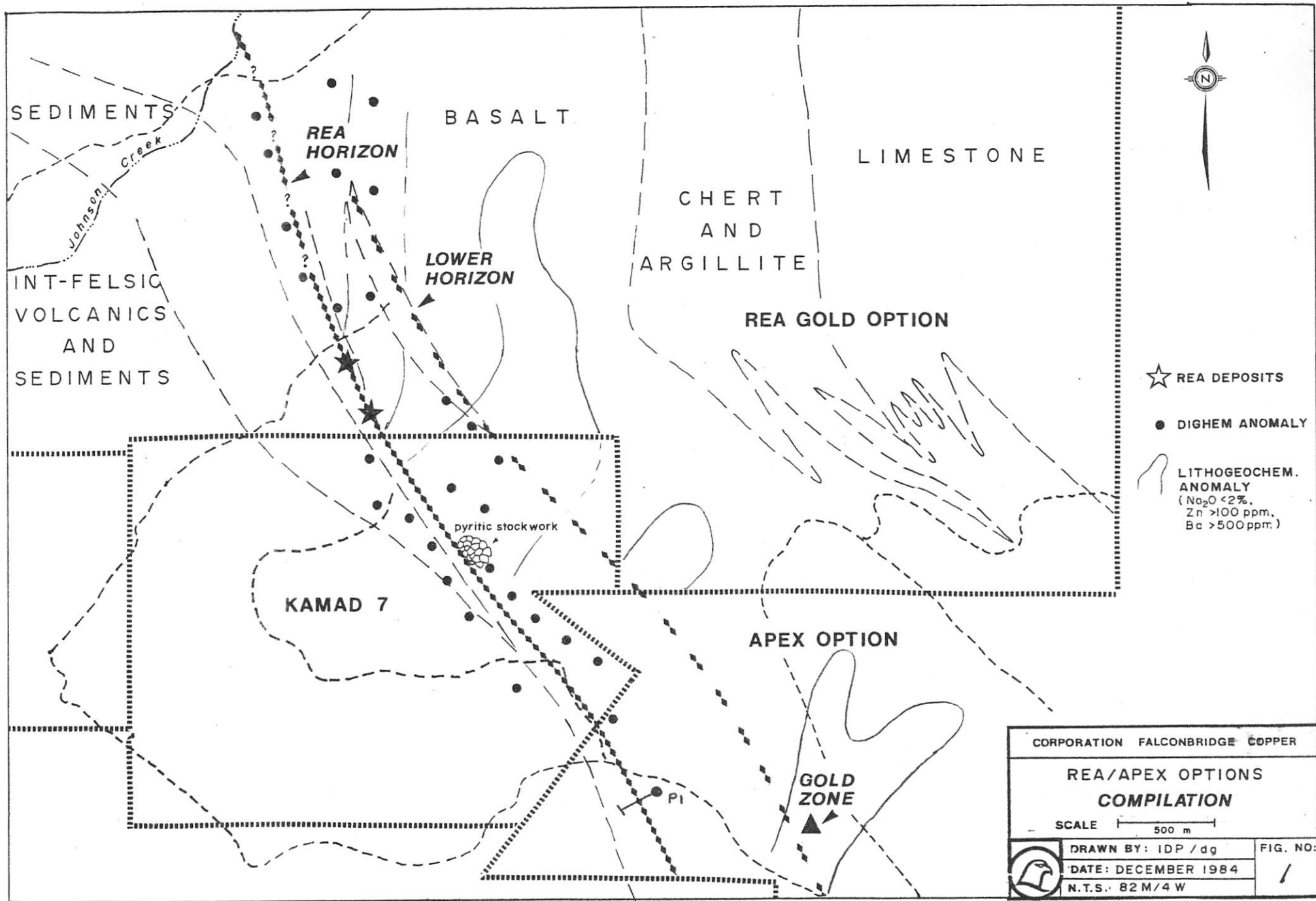
KAMAD (300 m)

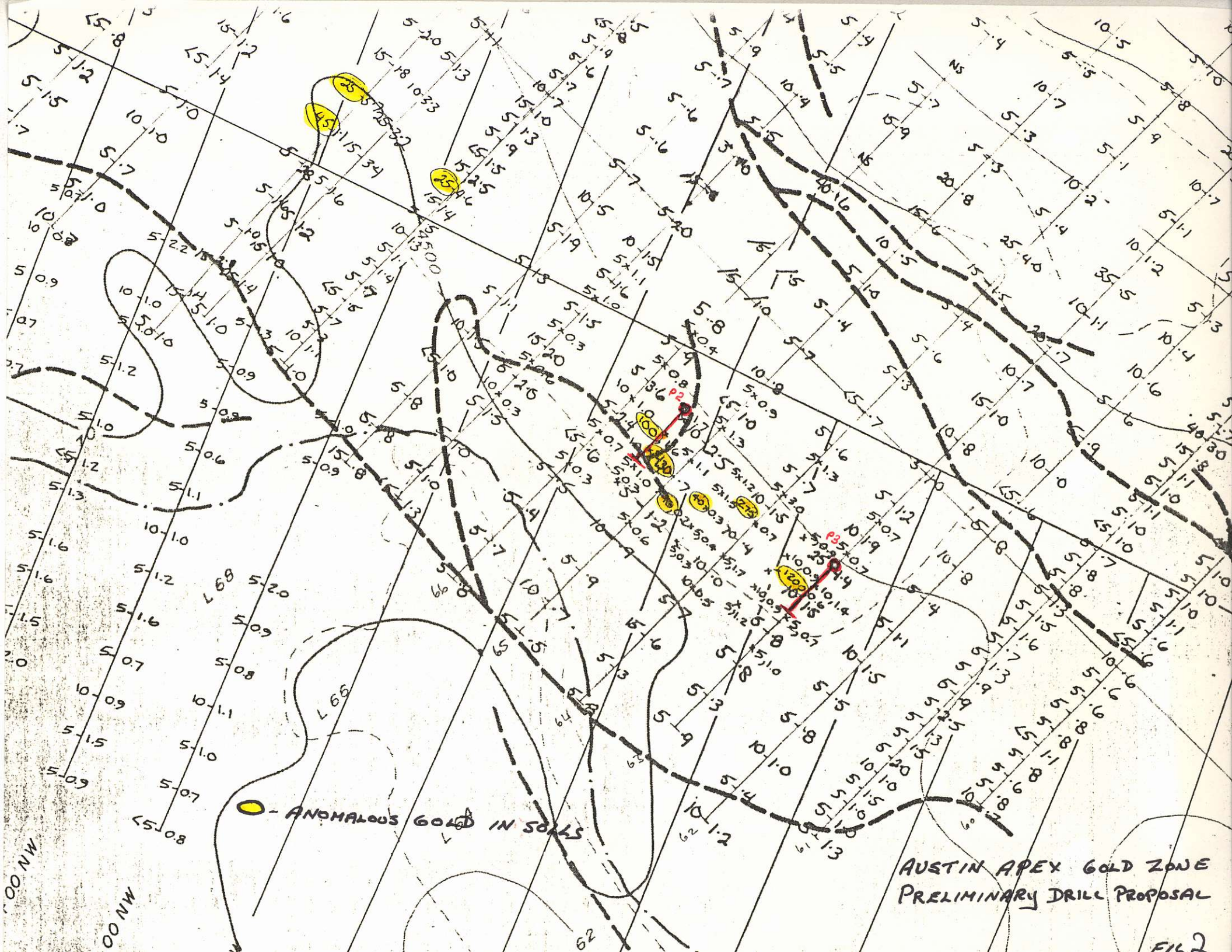
P8 and P9 (L85 - L95, 2 X 150 m.) are designed to test MaxMin II anomalies associated with either the Rea or the Homestake horizon on the Kamad 7 claim. These holes assume that the MaxMin survey is successful in delineating good anomalies and that CFC and Kamad reach an agreement (Fig. 6).

These proposals will test geological, geochemical and geophysical targets on the Rea Horizon over a strike length of more than 3 kilometres. The program though designed to intersect ore will also insure on completion that no "easy" or shallow targets remain. Specific locations for these holes will be decided upon completion of the MaxMin II survey.

A. J. Davidson

AJD/ik

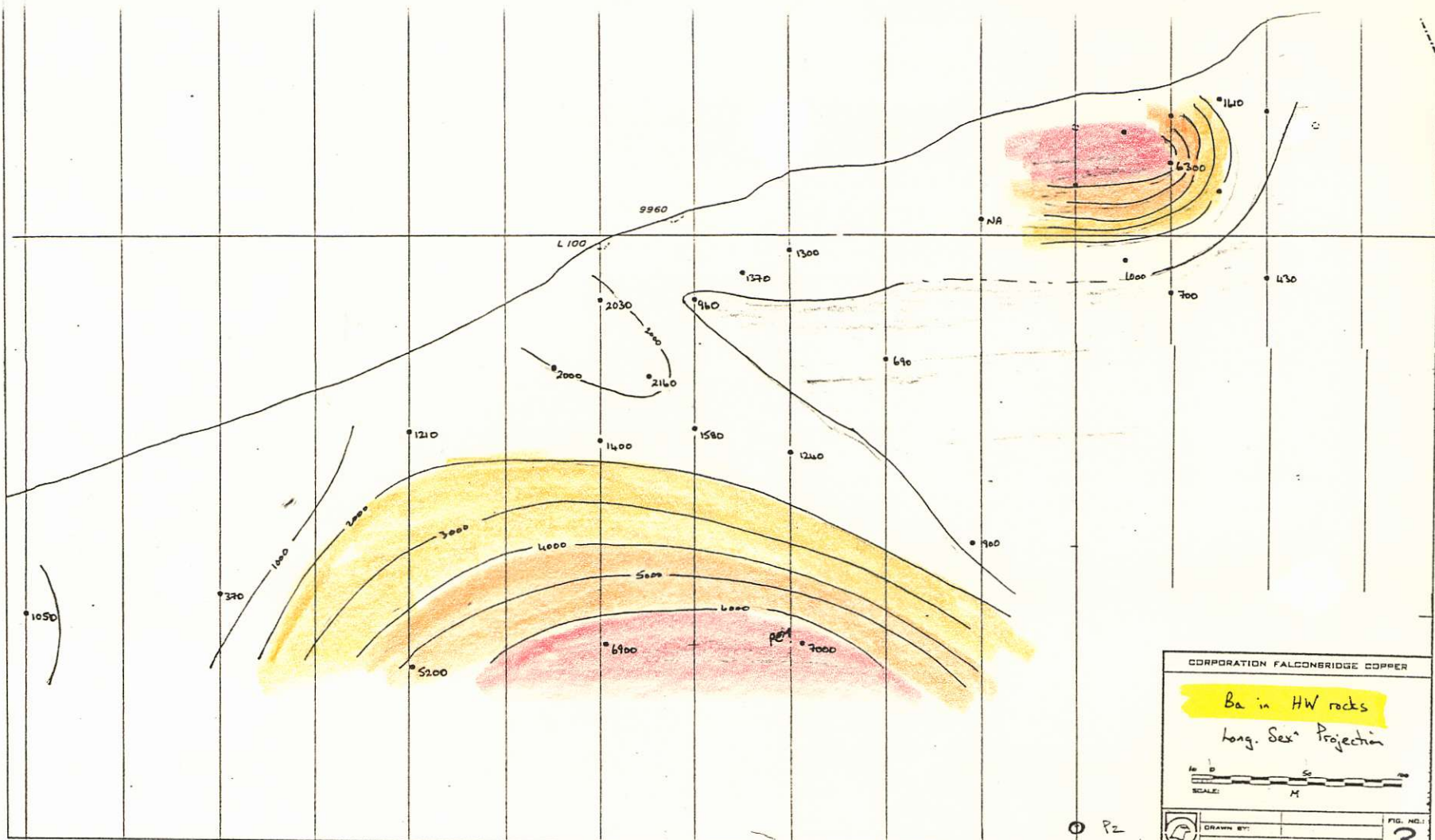


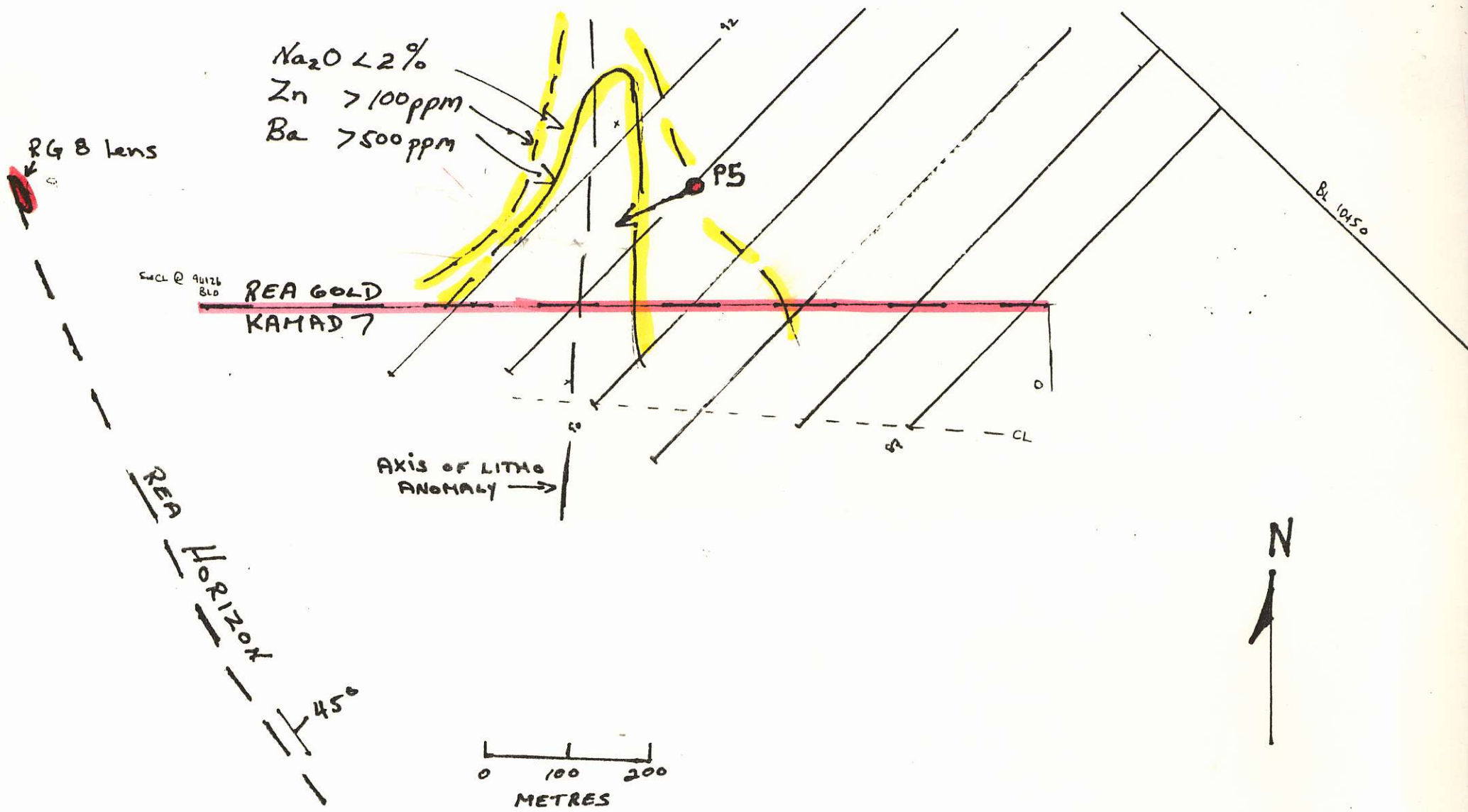


● - ANOMALOUS GOLD IN SOILS

AUSTIN APEX GOLD ZONE
PRELIMINARY DRILL PROPOSAL

FIL 2



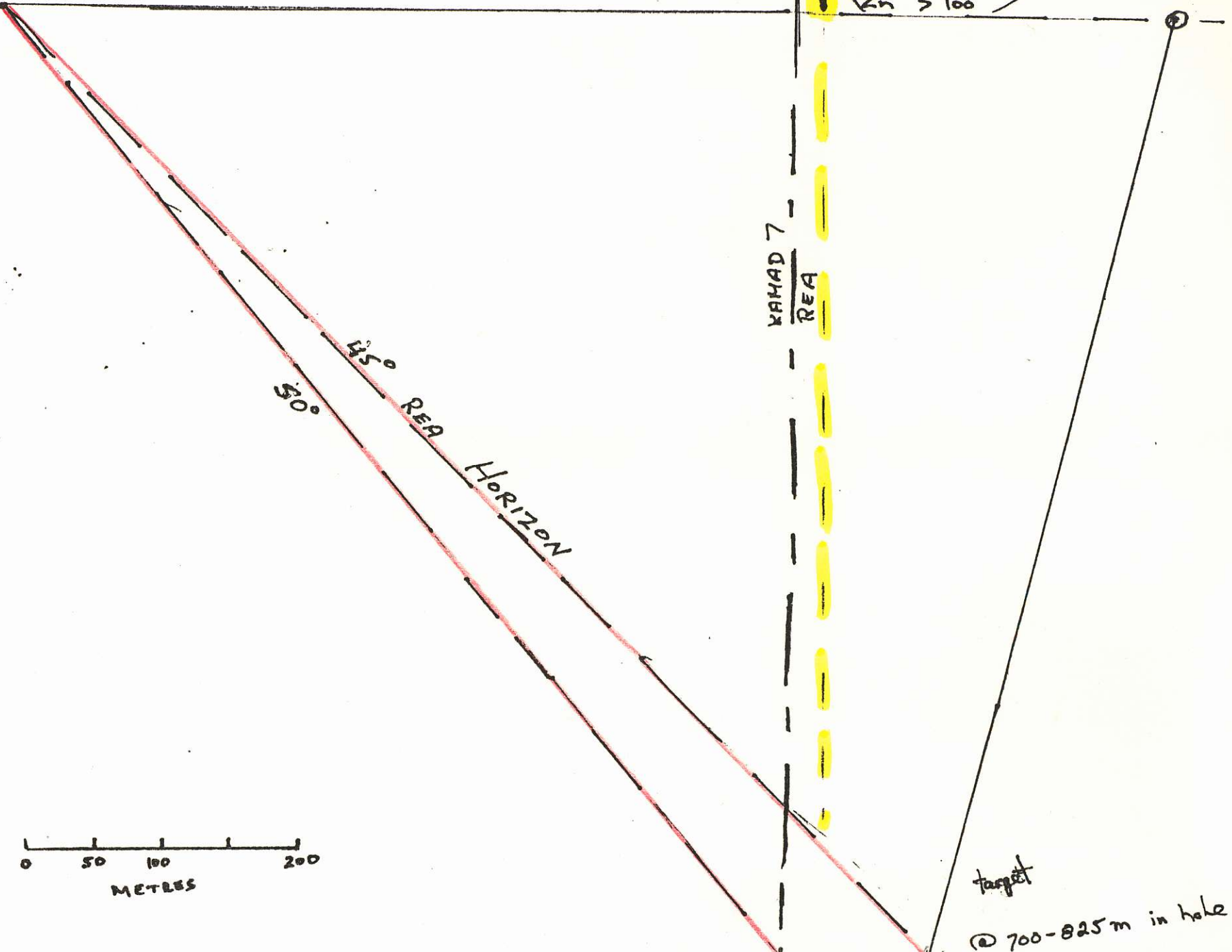


REA GOLD OPTION
 PROPOSED DRILLING
 PLAN OF P5

SW

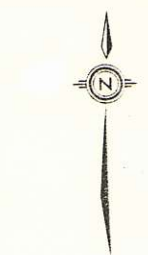
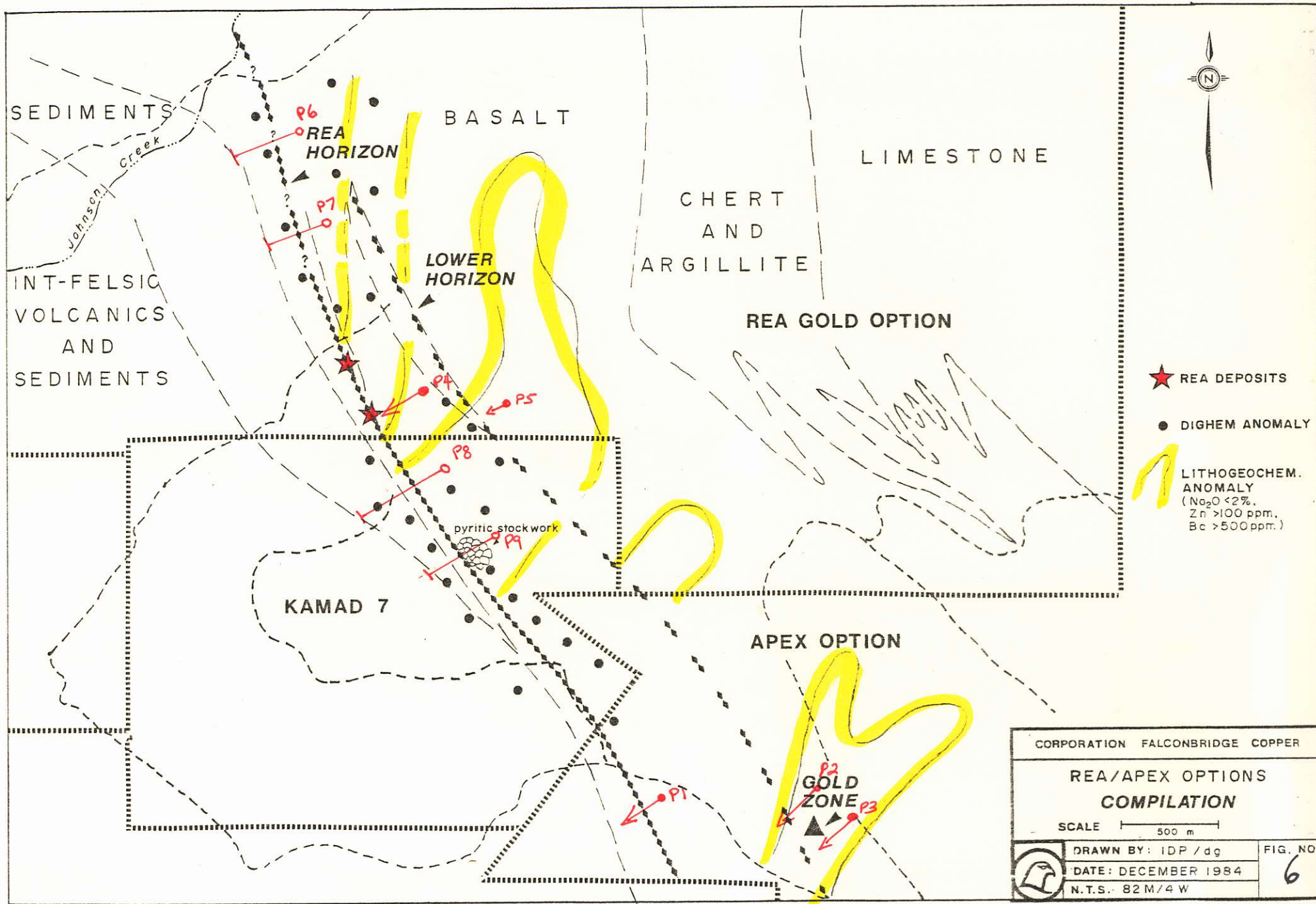
AXIS OF LITHO ANOMALY
($Na_2O < 2\%$)
(Ba > 500)
(Zn > 100)

P5 NE



0 50 100 200
METRES

target
700-825m in hole



- ★ REA DEPOSITS
- DIGHEM ANOMALY
- █ LITHOGEOCHEM. ANOMALY
($\text{Na}_2\text{O} < 2\%$,
 $\text{Zn} > 100 \text{ ppm.}$,
 $\text{Bc} > 500 \text{ ppm.}$)

CORPORATION FALCONBRIDGE COPPER	
REA/APEX OPTIONS COMPILATION	
SCALE 500 m	
DRAWN BY: IDP / dg	FIG. NO:
DATE: DECEMBER 1984	6
N.T.S. 82 M/4 W	