

822717 Mon. 3/78.

RE: YINE

Info. via Trigg Hoy - BCOM.

- found on a weekend by Cominco geologist out better collecting
- MS are in a shear roughly parallel to the St. Eugene system i.e. WNW
- Since Trigg's blurb in BCOM, Cominco have drilled it

± 600 m long (strike)

but best grades & thicknesses are in the tunnels.

- location about 2-3 mi at most north of jet of highway and road up. Plavine Creek. - 100 yds off road.
- very difficult to impossible to find by yourself - need a guide

BOS

VINE PROPERTY  
(82G/5)

By Trygve Höy

The Vine property, owned by Cominco Ltd., is located approximately 10 kilometres south of Cranbrook. Access is provided by a gravel road that follows Peavine Creek north from Highway 3 at the north end of Moyie Lake.

Work on the property to date has included geological mapping, soil sampling, an airborne geophysical survey, and trenching.

Five trenches, spaced approximately 25 metres apart, have exposed massive and disseminated sulphides in a shear zone in Middle Aldridge siltstone and quartzite just north of the Moyie fault. The shear zone and associated sulphides trend approximately 120 degrees and generally dip northwest at 45 to 85 degrees.

The width of the massive sulphide mineralization decreases from approximately 2 metres in trench 2 to 1.5 metres in trench 1 to the south, and to 25 to 30 centimetres wide in trenches 3 and 4 to the north. Stringer and disseminated sulphides are conspicuous in the shear zone for several metres on either side of the more massive sulphides. This minor mineralization is also visible in trench 5, 75 metres north of trench 2.

Assays of two chip samples across the width of the more massive sulphide zone in trenches 2 and 4 are as follows:

*TRIG's assays seem too high!*

*width  
12/25  
12/25  
12/25*

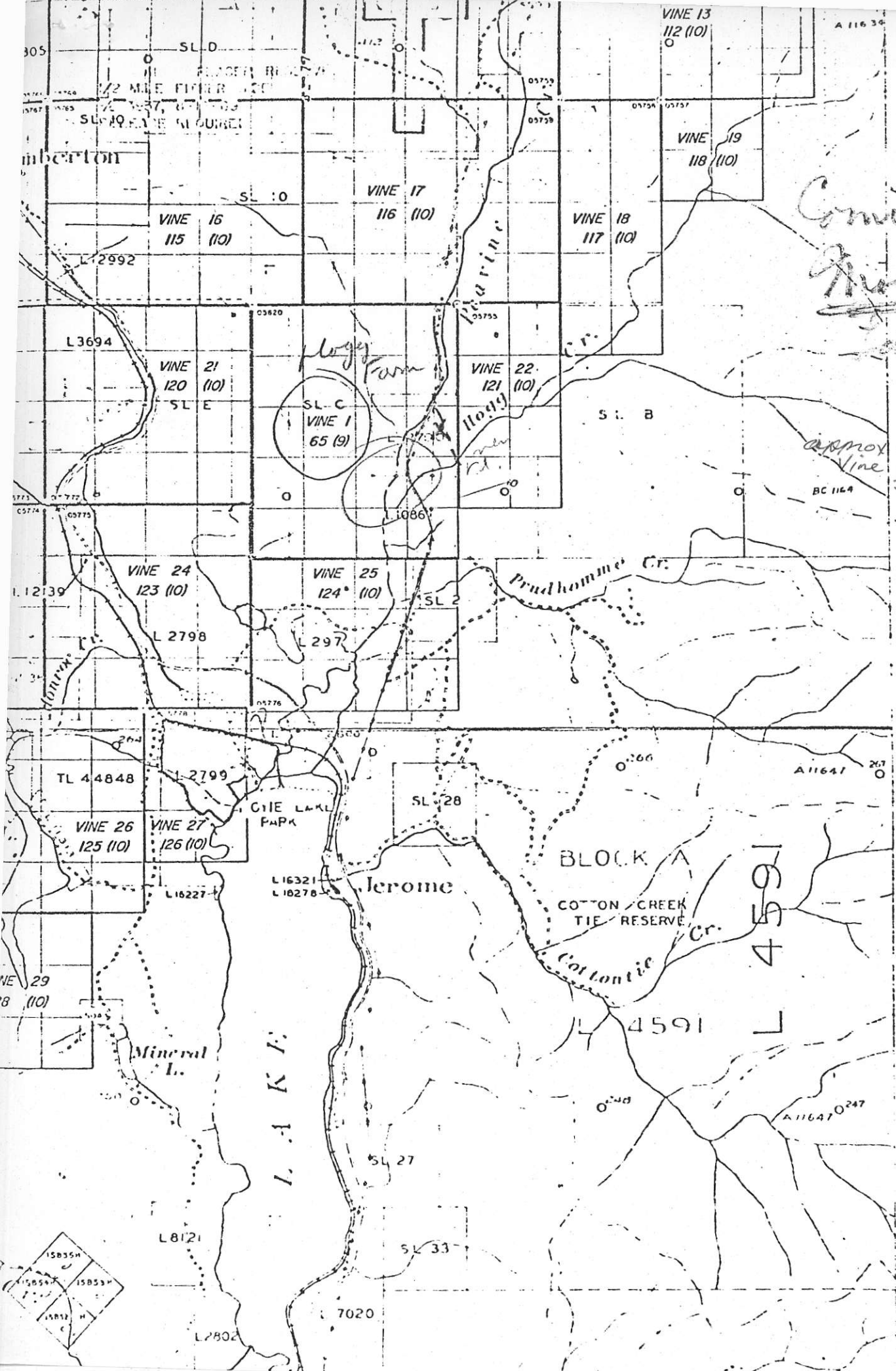
	Width	Gold ppm	Silver ppm	Copper per cent	Lead per cent	Zinc per cent
H77-V-1, Trench 2	2 m	4	144	0.21	12.75	4.06
H77-V-2, Trench 4	20 cm	5	106	0.10	13.28	7.12

*144 ppm Ag = 4.61 oz/ton*

*→ B. Simmons*

NOTE

<u>TRENCH NO.</u>	<u>BDS. STATIONS</u>
1	see notes.
2	B432
3	B433
4	B434
5	see notes.



*Convincing  
Microfilm  
 data 16-29*

*'77  
 approx location of  
 vine deposit from  
 ISM data in  
 1977.*

TO EAST SEE MAP 82 G/5 E

4591

5000 Metres DATE OF MICROFILM  
 1:000