

185

8W

7W

0
.550

4E

8E



225

.496

.496

.480

165

.409

.550

305

.580

Approx. Section A-B

.496

.496

.462

datum 500

.426

.340

.340

.306

.340

.202

.220

.254

.169

.288

.116

.151

.151

.364

.564

.550

.1390 .1422 .1647 .130 .1390 .1276 .1057

.3164

.2557

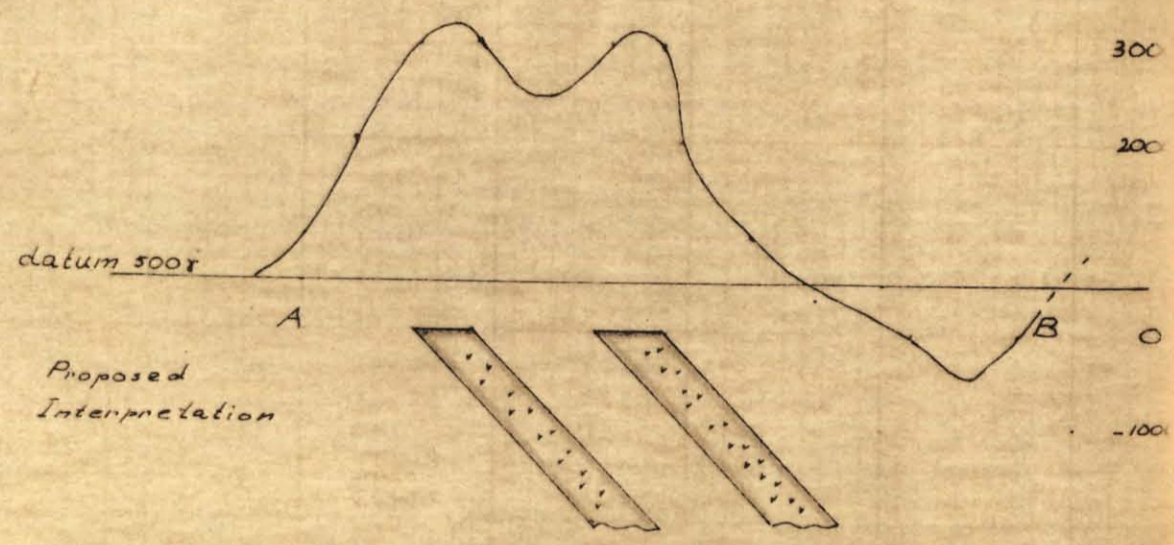
.2408

.2823

.2408

.771

.825



385

425

465

505

545

585

625

665

705

745

785

825

Scale: 1 inch = 400'

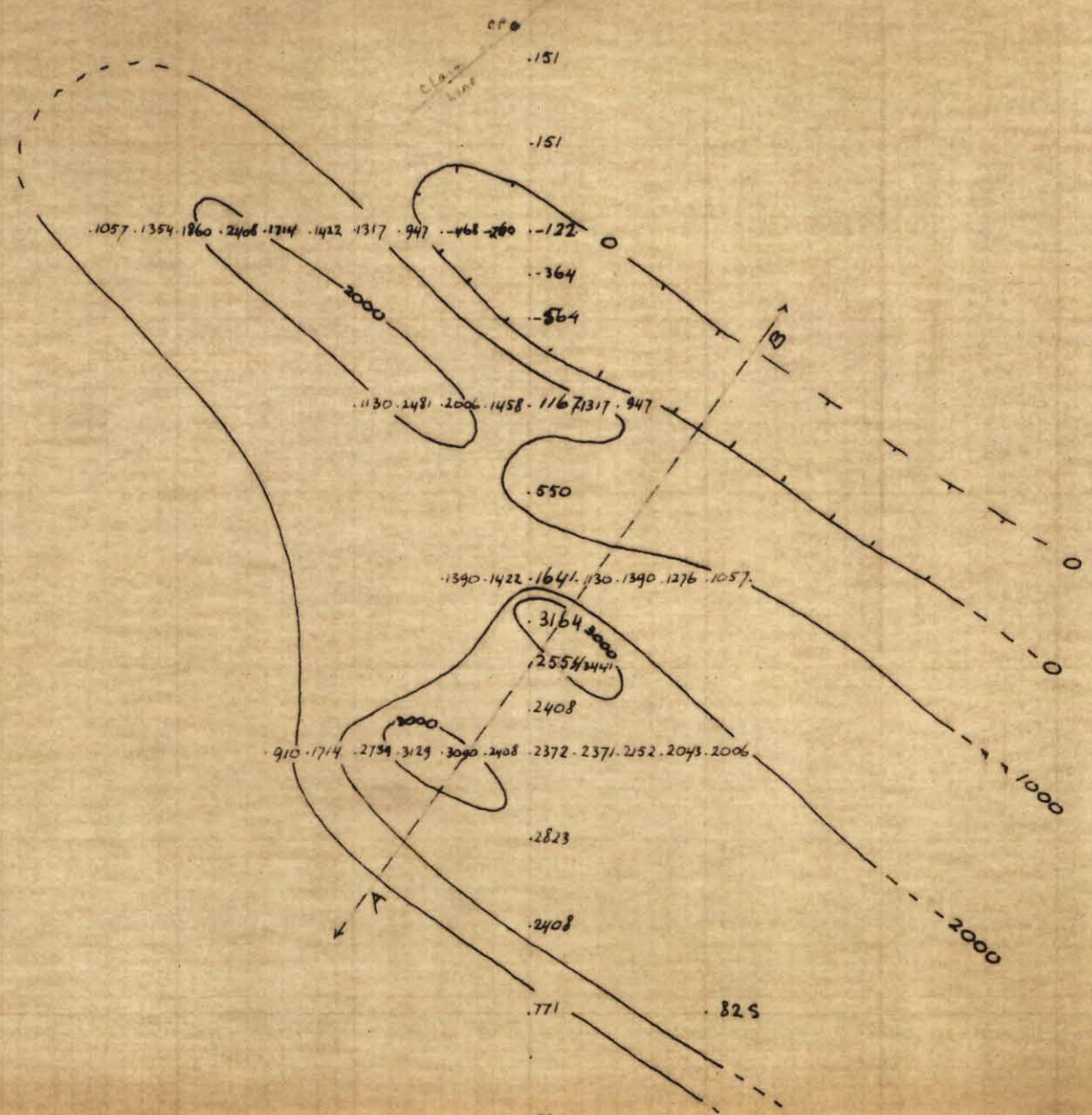
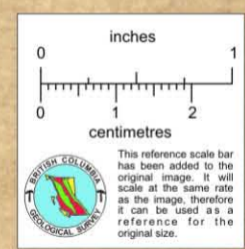
Instrument:

Sharpe

Magnometer E.S.100

Serial No. 121

Readings in gamma's



K Group
Nation River B.C.
Magnetic Survey
Sept. 1963
D. McRae
R. Wolfe

822103
0930/05