

820451

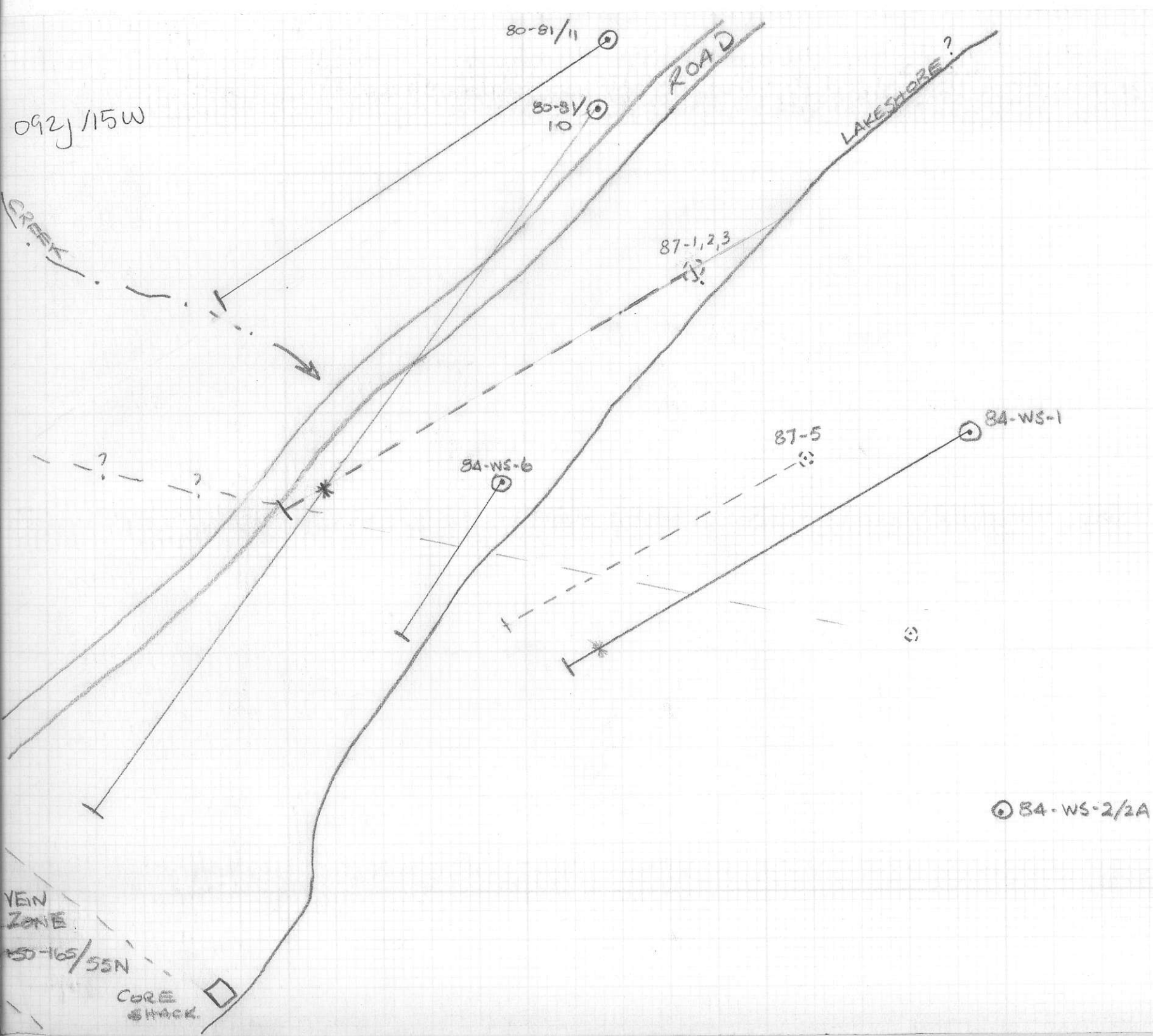


TABLE 3

WAYSIDE PROPERTY SUMMARY OF SURFACE DIAMOND-DRILLING
'COMMODORE VEIN'

DDH	DIR	INCL	LENGTH	CORE SIZE	NOTES
X 75-A-1	230 ⁰	-74 ⁰	27.43 m		23.16-25.30 m - 0.95 oz/t Au 2.4 m e .95
/ 75-A-3	215 ⁰	-60 ⁰	39.31 m		Caved abandoned
/ 75-A-5	220 ⁰	-70 ⁰	65.23 m		38.71-39.62 m - 0.02 oz/t Au 39.62-40.54 m - 19.61 oz/t Au → .92 m e 19.61
X 79-S-1	230 ⁰	-74 ⁰	29.56 m		26.21-27.13 m - 1.58 oz/t Au, 0.54 oz/t Ag Avg. - 24.99-27.13 m - 0.695 oz/t Au, 0.44 oz/t Ag .92 m e 1.6 2.14 m e .7
/ 79-S-2	200 ⁰	-70 ⁰	28.96 m		24.84-26.21 m - 0.066 oz/t Au
/ 79-S-3	230 ⁰	-45 ⁰			Abandoned in ob.
X 79-S-4	240 ⁰	-60 ⁰	232.87 m		No significant assays
X 79-S-5	240 ⁰	-60 ⁰	218.24 m		65.84-67.06 m - 0.012 oz/t Au, 0.06 oz/t Ag
/ 83-B-1	270 ⁰	-55 ⁰	32.3 m		9.14-10.50 m - 0.005 oz/t Au n.b. 33% Rec. no sludge
/ 83-B-2	240 ⁰	-55 ⁰	35.3 m		29.72-31.39 m - 0.012 oz/t Au - n.b. 66% Rec. - Core 29.56-30.78 m - 0.064 oz/t Au - sludge
/ 83-B-3	225 ⁰	-75 ⁰	43.9 m		39.01-39.32 m - 0.018 oz/t Au - core 39.01-39.32 m - 0.022 oz/t Au - sludge
/ 83-C-8	220 ⁰	-70 ⁰	40.84 m		No significant assays
/ 84-C-9	270 ⁰	-47 ⁰	59.13 m		No significant assays

80-81/10 685 PRO 80-81/11
-695

Plot
84-WS-6

675

665

655

Plot
84-WS-1

685
175
-80

"STRENGTHENING ALTERNATION"
HOLE 84-WS-1

80-81/10
-56

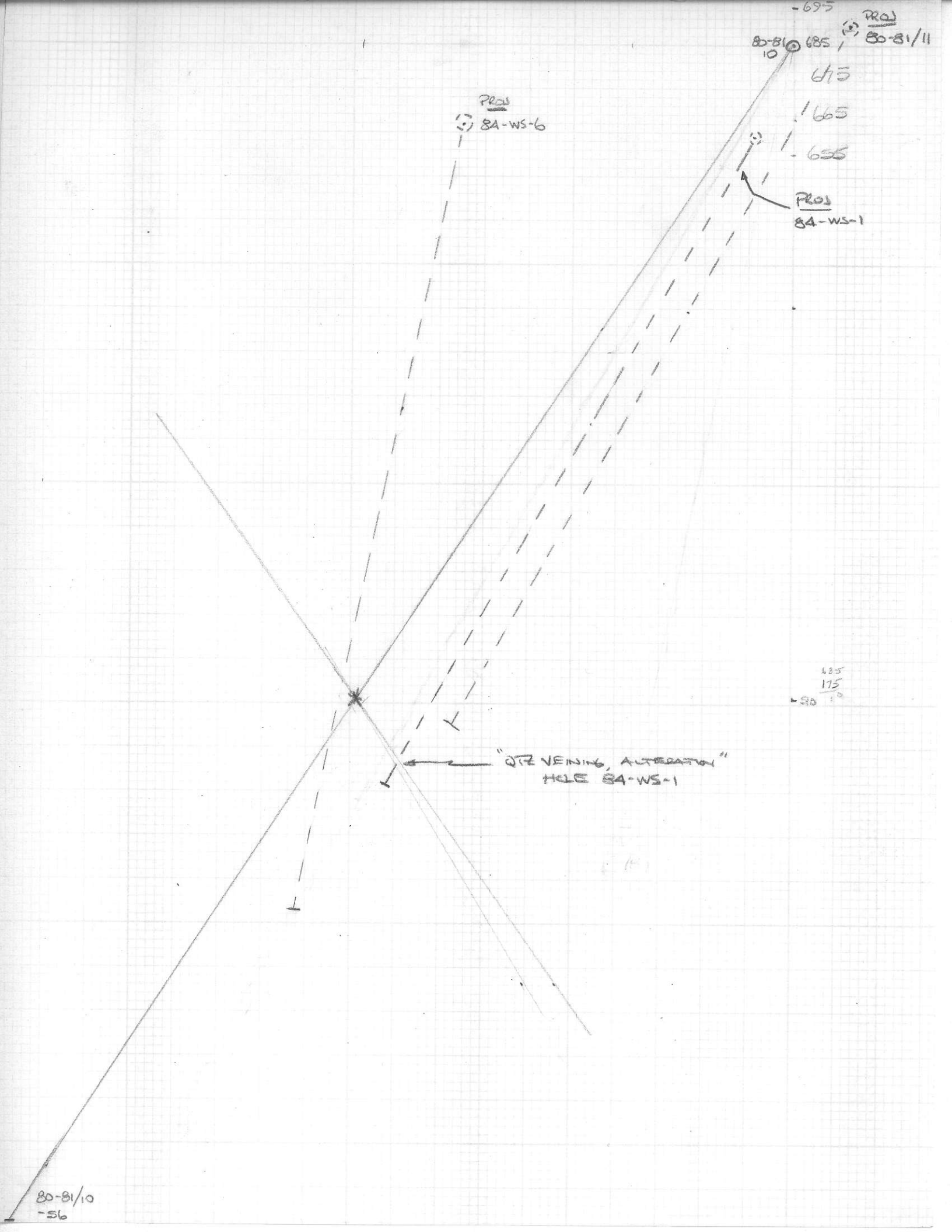


TABLE 2

WAYSIDE PROPERTY SUMMARY OF SURFACE DIAMOND-DRILLING
'WAYSIDE VEIN'

DDH	DIR	INCL	LENGTH	CORE SIZE	NOTES
✓ 79-S-7	240°	-55°	17.07 m		Two veins intersected - no significant assays n.b. 0 - level
✓ 79-S-8	240°	-80°	21.6 m		Qtz veins at 4.6-5.2 m, 17.2-20.1 m, 20.6-21.2 m 20.6-21.2 m - 0.005 oz/t Au, 0.11 oz/t Ag n.b. 0 - level
✓ 79-S-9	270°	-80°	26.8 m		17.7-18.3 m - 0.52 oz/t Au, 0.14 oz/t Ag n.b. 0 - level 20.7-24.1 m - 0.03 oz/t Au, 0.08 oz/t Ag 29.1-30.2 m - 0.15 oz/t Au, 0.09 oz/t Ag
* X 80-S-10/ 81-S-10	215°	-56°	383.1 m		208.8-213.4 m - Qtz vein; 208.8-211.8 m - 2.63 oz/t Au, 1.02 oz/t Ag <i>1.76 opt over 4.5m w/ 3m @ 2.6 opt</i>
X 81-S-11	235°	-60°	233.8 m		229.8-232.9 m - Qtz. vein - 0.003 oz/t Au
X 84-WS-1	240°	-60°	236.8 m		211.8-214.9 m - Qtz veining, alteration 211.8-212.6 m - 0.018 oz/t Au ✓
X 84-WS-2	238°	-60°	45.7 m		Abandoned in o.b.
X 84-WS-2A	238°	-65°	51.8 m		Abandoned in o.b.
X 84-WS-6	213°	-78°	216.4 m		No significant assays - should be relogged
85-07	245°	-45°	267.0 m		No significant assays - should be relogged

235
30
245

(continued)

DDH	DIR	INCL	LENGTH	CORE SIZE	NOTES
84-D0-10	44 ⁰	-80 ⁰	52.4 m		No significant mineralization
85-01	263 ⁰	-71 ⁰	150.0 m		No significant mineralization
7 85-02	273 ⁰	-70 ⁰	221.6 m		Massive to banded pyrite 3.0 m-98.5 No significant assays
85-03	270 ⁰	-45 ⁰	76.2 m		No significant mineralization
85-04	270 ⁰	-45 ⁰	26.8 m		No significant mineralization
85-05	270 ⁰	-45 ⁰	155.4 m		No significant mineralization - should be relogged. This hole is not deep enough to test major north-south Pulse EM anomaly.
85-06	270 ⁰	-80 ⁰	233.2 m		No significant mineralization - should be relogged

(continued)

DDH	DIR	INCL	LENGTH	CORE SIZE	NOTES
84-D0-10	44 ⁰	-80 ⁰	52.4 m		No significant mineralization
85-01	263 ⁰	-71 ⁰	150.0 m		No significant mineralization
85-02	273 ⁰	-70 ⁰	221.6 m		Massive to banded pyrite 3.0 m-98.5 No significant assays
85-03	270 ⁰	-45 ⁰	76.2 m		No significant mineralization
85-04	270 ⁰	-45 ⁰	26.8 m		No significant mineralization
85-05	270 ⁰	-45 ⁰	155.4 m		No significant mineralization - should be relogged. This hole is not deep enough to test major north-south Pulse EM anomaly.
85-06	270 ⁰	-80 ⁰	233.2 m		No significant mineralization - should be relogged

Proj
79-5-1
2me.7
AND 75-A-1
2me.95

"SFE VEIN."

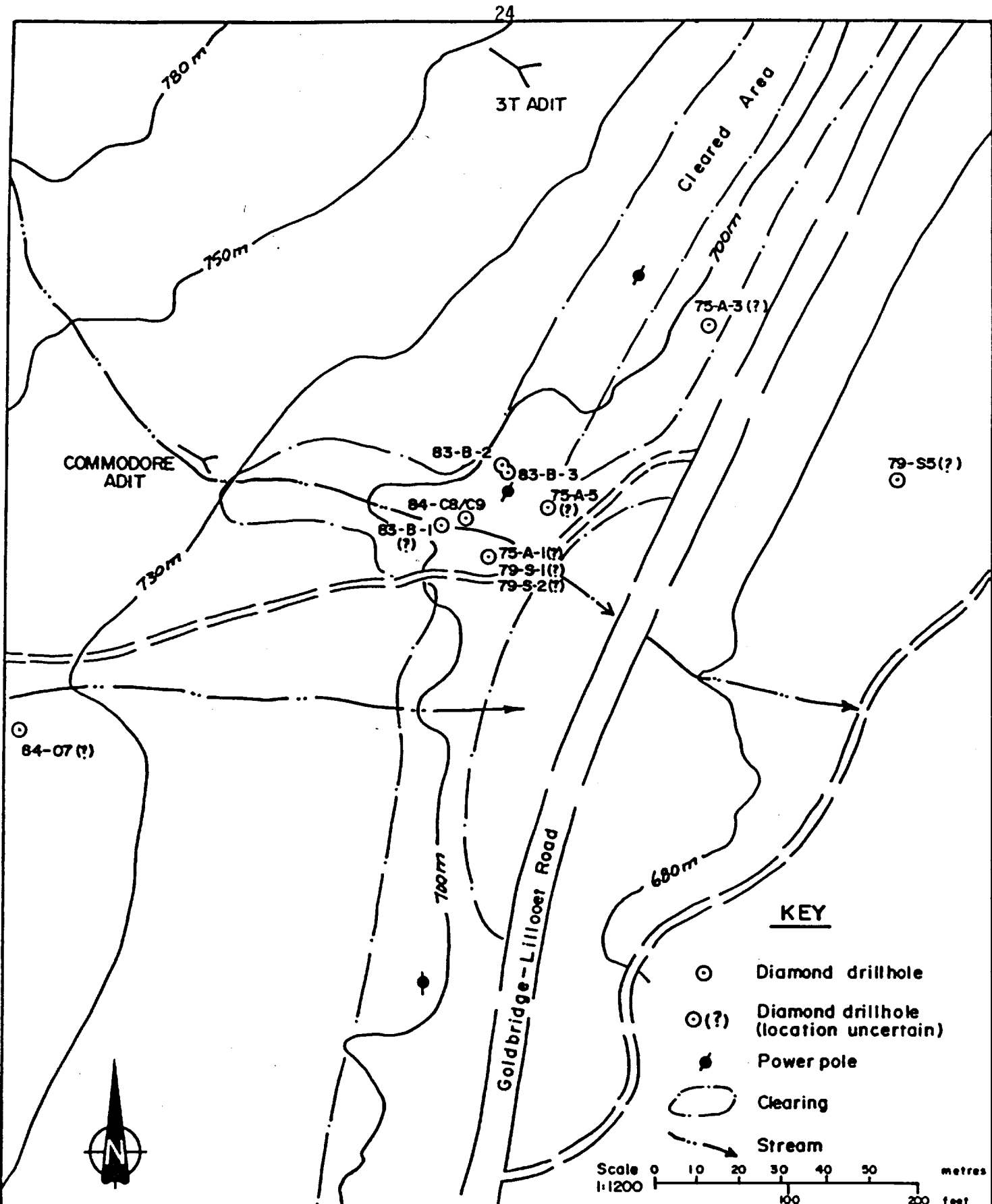
7955 POOJ

7954

1.2me
.01oz/t

"VEIN ZONE"

NO SIG ASSMYS



COMMODORE VEIN DRILLHOLE LOCATION PLAN

**BEACON HILL
CONSULTANTS LTD.**

Date

FIG. NO.

Apprvd.

10

Project