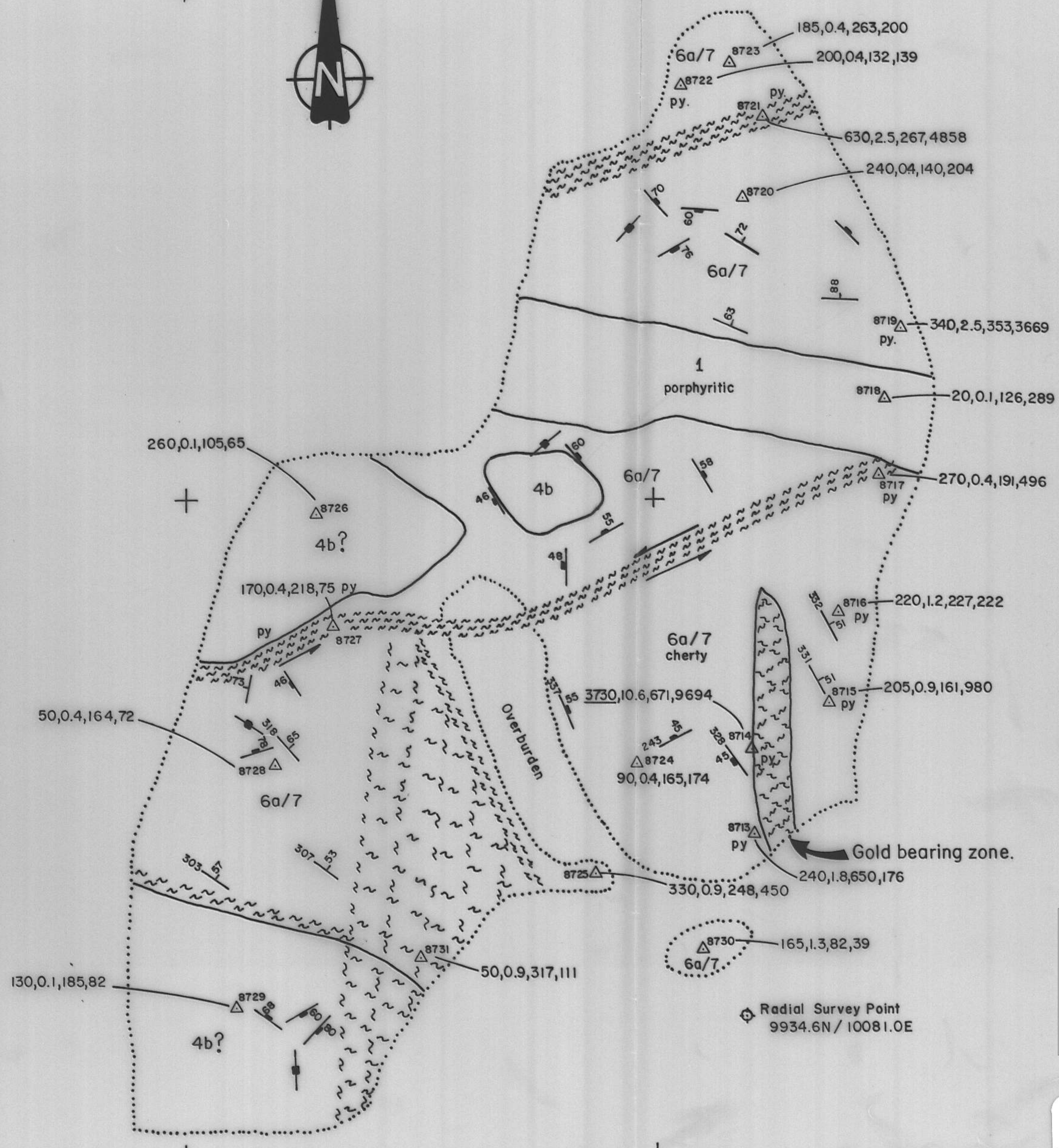




10075E

10080E

9940N

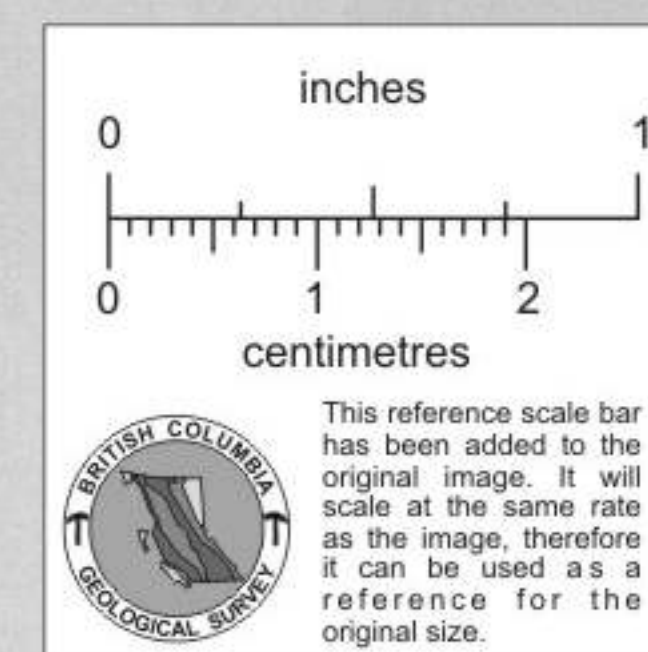


**GEOLOGICAL LEGEND**

- 1 BASALT DYKE - fine-grained to aphanitic, slightly magnetic; occasional hornblende phenocrysts.
- 4 DIORITE (4a)/MONZONITE (4b) - medium to coarse-grained, inequigranular, variable potassium feldspar content.
- 6a/7 DACITIC VOLCANICS (6a)/SILTSTONE - interbedded and alternating fine-grained ash tuff and dark brown to black fine-grained sediments.

**SYMBOLS**

- Intense fracturing or shearing
- Bedding.
- Joint
- Shear or fault zone.
- Drag fault with shearing.
- Greater than 5% disseminated pyrite.
- Rock sample location with number and Gold in ppb, Silver in ppm, Copper in ppm, & Zinc in ppm.



**WESTERN CANADIAN MINING CORPORATION**

**1988  
KERR PROJECT  
L-ZONE  
GEOLOGY & LITHOGEOCHEMISTRY**

Scale: 0 0.5 1.0 1.5 metres 1:50

Drawn by: H.H., M.J.  
Date: Nov., 1988  
Surveyed by: M. Jerema

RPT.1033 Figure 10

804041

Radial Survey Point  
9934.6N / 10081.0E