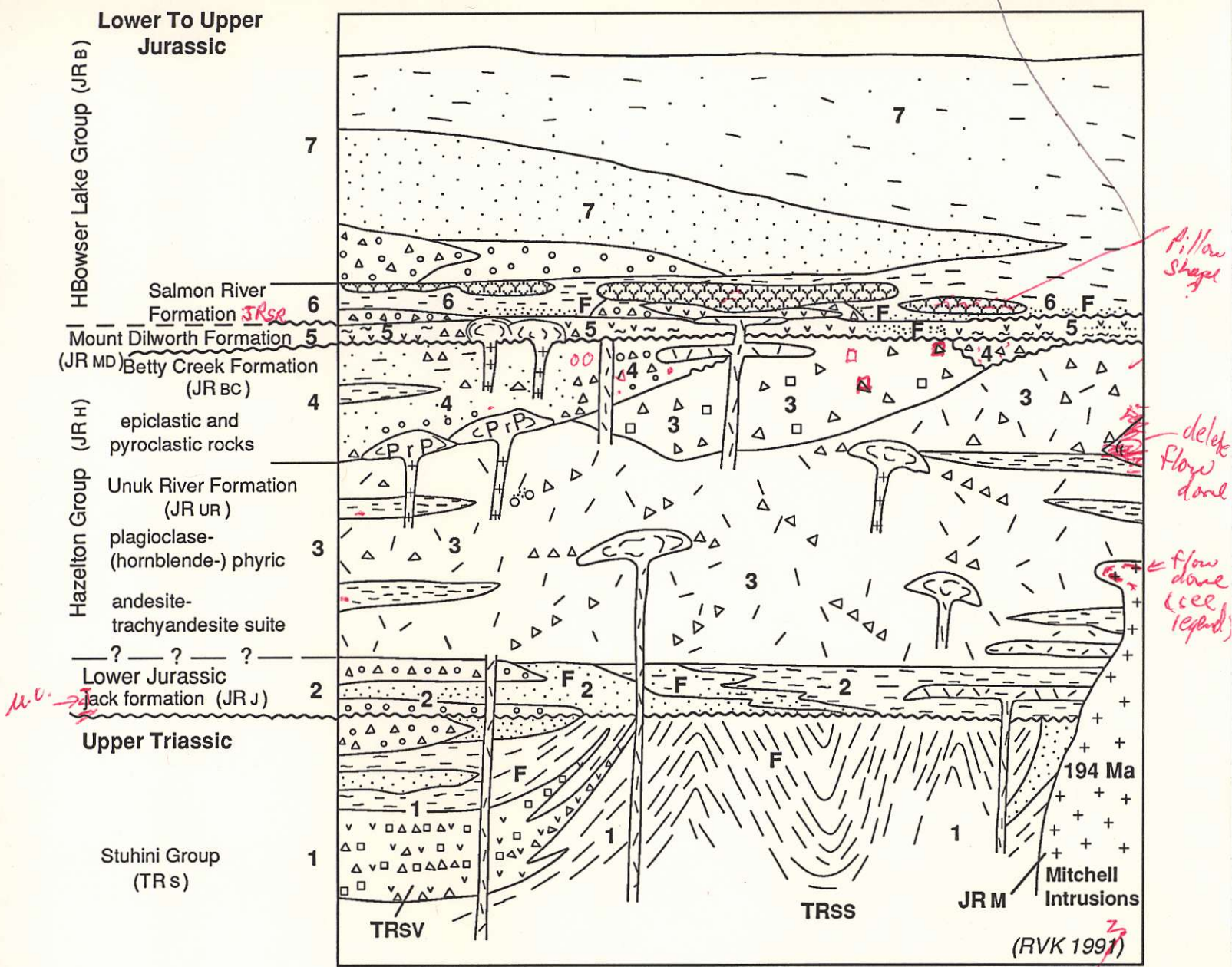


July 20/1992



**Intrusive Rocks**

mafic; felsic

**Volcanic Rocks**

- pillow lava
- welded tuff (fiamme)
- flow layered (flow dome)
- breccia
- undifferentiated

**Sedimentary Rocks**

- mudstone
- sandstone
- conglomerate; breccia
- initial dip (sloping)
- PrP** Premier Porphyry
- pyroxene-phyric
- plagioclase-(hornblende-) phyric
- unconformity
- F** fossil locality

Sulphurets  
803807