

104B 889077 50m
down for 76
on W side of R.
S. Kerr
black tennantite

803620 ✓
High Ridge VDH - T
South of
Kerr Properties - on
Sulphurets
104B/8

104B 889078 - 30 inches down
slend py schist - very
buff to white

VDH -
er

end just above
Rod's gold o/c.

104B 889099 - is control
reference

BCDM Kerr South
ridge samples with
pyalena - copper stain.

W88-24-5

104B 889080

BP same as 9083

104B 889081

W88-24-8

104B 889082

W88-24-12

104B 889083

104B

REPORT: 089-51378.0

PROJECT: 23233-6-1332

PAGE 4A

SAMPLE NUMBER	ELEMENT UNITS	Na PCT	Sc PPM	Cr PPM	Fe PCT	Co PPM	Ni PPM	Zn PPM	As PPM	Se PPM	Br PPM	Pb PPM	Zr PPM
1048-889075		2.00	18.0	<20	4.8	14	<23	260	5.6	<5	<1.1	130	<200
1048-889076		0.06	5.2	<58	3.7	<5	<24	830	336.0	<5	10.0	26	<420
1048-889077	<i>and</i>	0.24	11.0	<20	4.0	7	<10	240	6.5	<5	<0.5	120	<200
1048-889078	<i>snowfield</i>	0.36	6.9	31	0.9	<5	<10	130	3.2	<5	<0.5	160	<200
1048-889079	<i>SS04</i>	2.00	9.1	150	2.4	12	39	<100	4.9	<5	<0.5	47	<200
1048-889080	<i>ADP</i>	3.71	18.0	<20	3.0	8	<25	200	2.8	<5	0.9	76	<200
1048-889081	<i>near South</i>	0.94	19.0	<20	6.0	21	<22	240	17.0	5	0.9	84	<200
1048-889082	<i>Ridge</i>	<0.02	<0.5	<73	0.6	<5	<43	24000	77.9	<5	10.0	<22	<770
1048-889083		0.92	17.0	42	5.7	20	<10	250	16.0	<5	1.2	84	<200
1048-889084		0.31	17.0	46	3.5	17	<20	600	44.0	5	1.0	280	<200
1048-889085	<i>Heavy Pyrite Mitchell Valley Zone</i>	0.46	12.0	58	4.3	31	<27	480	41.0	10	1.7	310	<420
1048-889086		0.04	4.1	37	25.9	7	<30	<100	336.0	46	5.4	110	<470
1048-889087		1.90	8.5	21	7.3	16	<24	160	10.0	13	<0.5	240	480
1048-889088		0.03	2.5	26	21.6	8	31	<100	314.0	120	5.6	62	<400
1048-889089	<i>52.2m</i>	0.19	2.0	<120	5.3	<5	<49	380	1240.0	18	<55.9	<29	<830
1048-889090	<i>52.4</i>	0.21	5.0	<99	10.0	<5	<40	320	712.0	25	32.0	<23	<670
1048-889091	<i>112.5</i>	<5.80	12.0	<70	6.6	18	<34	1700	2810.0	<5	<39.0	33	<690
1048-889092	<i>137.4</i>	0.11	20.0	<20	6.5	27	27	260	12.0	9	<0.5	90	<200
1048-889093	<i>33.3</i>	0.15	17.0	<20	3.3	11	<10	200	23.0	8	0.6	81	<200
1048-889094	<i>174</i>	<7.20	15.0	<72	8.3	<5	<35	660	984.0	10	<39.0	60	<700
1048-889095	<i>240</i>	0.08	11.0	<20	6.4	15	<10	160	19.0	25	0.6	52	<200
1048-889096	<i>58.6</i>	0.16	16.0	<20	5.3	17	<21	1900	106.0	14	4.5	73	<200
1048-889097	<i>136.5</i>	0.12	20.5	<20	5.6	21	<10	230	50.2	6	5.4	89	<200
1048-889098	<i>SS06</i>	1.70	12.0	450	4.6	34	330	340	31.0	<5	2.6	110	<200
1048-889099	<i>228.0</i>	0.21	15.0	<20	6.1	19	<10	150	8.6	10	1.1	65	<200
1048-889100	<i>264.5</i>	0.24	17.0	32	3.6	9	<10	320	3.8	<5	<0.5	84	<200
1048-889101	<i>43.9</i>	0.09	11.0	<20	8.5	25	<10	220	93.9	<5	2.3	49	<200
1048-889102	<i>54.4</i>	0.04	6.5	<20	15.0	12	<23	140	177.0	12	3.1	36	<200
1048-889103	<i>73.0</i>	0.05	11.0	21	6.7	8	20	160	48.0	10	1.3	60	<200
1048-889104	<i>92.8</i>	<6.60	15.0	<72	10.0	15	<35	450	626.0	8	<37.0	100	<700
1048-889105		0.07	4.2	33	10.0	16	<22	190	93.1	25	4.8	41	<200
1048-889106		0.03	1.4	<49	4.2	9	24	<100	989.0	30	14.0	<13	<200
1048-889107		<0.02	<27.0	<6400	<24.0	<534	<3000	<31600	>9000.0	<620	<2480.0	<1800	<51000
1048-889108		<14.00	1.1	<190	10.0	<12	<77	840	1220.0	<20	<205.0	<53	<1300
1048-889109		1.60	13.0	39	4.2	16	<21	1300	58.6	<5	1.6	57	<200
1048-889110		0.08	8.6	<63	6.5	15	<30	3100	280.0	<5	13.0	38	<500
1048-889111		1.60	8.7	<20	2.4	8	<10	170	2.5	<5	<0.5	100	<200
1048-889112	<i>B20NE</i>	0.09	4.1	27	7.1	6	<20	<100	68.1	25	1.8	17	<200
1048-889113	<i>undisturbed purple</i>	2.86	6.4	<20	3.2	7	<10	<100	4.9	<5	<0.5	72	<200
1048-889114	<i>4m chert</i>	<7.10	8.6	<120	4.5	<5	<52	880	909.0	<13	<152.0	90	<900

REPORT: 089-51378.0

PROJECT: 23233-6-1332

PAGE 43

SAMPLE NUMBER	ELEMENT UNITS	Mo PPM	Ag PPM	Cd PPM	Sn PPM	Sb PPM	Te PPM	Cs PPM	Ba PPM	La PPM	Ce PPM	Sm PPM	Eu PPM
104B-889075		<1	<6	<5	<100	2.5	<10	5.6	3100	15	<14	2.90	<1
104B-889076		1270	<6	<12	<430	143.0	<37	0.9	6350	6	<29	1.20	<1
104B-889077		166	<4	<5	<100	2.6	<10	4.1	2200	16	22	2.60	<1
104B-889078		168	<2	<5	<100	2.5	<10	4.4	2000	9	17	1.70	<1
104B-889079	end Snowfield SS042		<4	<5	<100	1.3	<10	1.5	1400	20	46	4.00	<1
104B-889080	bc. Duffin Southside.	1	<6	<5	<100	9.2	<10	3.8	1000	10	<12	2.90	<1
104B-889081		7	<5	<5	<100	12.7	<10	2.8	2100	9	<15	1.90	<1
104B-889082		<3	1220	120	<540	242.0	<45	<1.0	<150	4	<33	0.26	<2
104B-889083		8	<5	<5	<100	11.7	<10	3.0	2100	8	20	1.90	<1
104B-889084	Heavy Pyrite Mitchell Valley zone	14	<5	<5	<100	8.2	<10	6.6	6530	27	23	1.90	<1
104B-889085		42	<6	<5	<270	40.0	<23	6.8	2900	23	58	3.90	2
104B-889086		210	7	<5	<300	10.3	<29	3.0	3000	3	<37	0.60	<1
104B-889087		44	<5	<5	<100	3.9	<10	7.7	2800	12	23	2.20	<1
104B-889088		226	<6	<5	<260	5.0	<22	1.9	200	3	<33	1.00	<1
104B-889089		9	<11	<26	<920	544.0	<79	<1.2	600	5	<56	1.70	<3
104B-889090		9	<9	<21	<730	413.0	<63	<1.0	740	3	<47	0.66	<3
104B-889091		102	32	<36	<530	1240.0	<60	<0.5	1600	14	<19	2.20	<3
104B-889092		48	<6	<5	<100	3.4	<10	2.8	710	10	<16	2.50	<1
104B-889093		3	<5	<5	<100	1.6	<10	3.0	1800	10	<13	1.90	<1
104B-889094		14	12	<38	<550	1400.0	<62	<0.5	1600	5	<20	0.94	<3
104B-889095		8	<4	<5	<100	2.4	<10	2.1	1400	3	<15	0.94	<1
104B-889096		3	<6	<5	<100	25.6	<10	3.1	1600	10	<18	2.10	<1
104B-889097		10	<5	<5	<100	4.1	<10	3.3	1500	11	28	2.50	<1
104B-889098	SS06	4	<5	<5	<100	1.8	<10	5.3	690	29	68	7.20	<1
104B-889099		33	<5	<5	<100	2.4	<10	3.5	9110	4	17	1.30	<1
104B-889100		<1	<5	<5	<100	0.9	<10	3.5	2400	5	<12	1.40	<1
104B-889101		164	<2	<5	<100	6.4	<10	0.7	510	4	<11	1.80	<1
104B-889102		156	54	<5	<300	11.0	<30	1.0	450	6	35	1.10	<1
104B-889103		5	<5	<5	<100	11.3	<10	2.7	1000	4	<17	1.30	<1
104B-889104		42	28	<38	<550	1240.0	<62	<0.5	2200	9	<20	1.60	<3
104B-889105		8	39	<5	<240	20.4	<20	2.0	1100	5	<23	1.20	<1
104B-889106		7	12	<11	<340	41.0	<31	<0.5	240	<2	28	0.40	<1
104B-889107		<670	7230	<5700	<38000	>9000.0	<5600	<61.0	<14000	<914	<1800	<15.00	<260
104B-889108		68	856	<100	<1400	2820.0	<150	<1.8	<390	17	<83	1.30	8
104B-889109		5	<6	<5	<230	12.4	<30	2.2	3200	9	25	3.10	<1
104B-889110	A worth	9	69	<14	<460	180.0	<40	1.6	590	12	37	3.70	<1
104B-889111	orthodase bc. phyray.	1	<4	<5	<100	5.7	<10	4.1	9610	6	<12	1.30	<1
104B-889112	purple v. s. grey	11	<5	<10	<290	19.4	<26	1.2	84100	6	<33	0.87	<1
104B-889113	phyray.	2	<4	<5	<100	2.0	<10	3.0	1300	16	42	3.50	<1
104B-889114	phyray. Mitchell field.	45	274	<69	<890	1670.0	<96	<1.3	1200	17	<52	1.00	<5

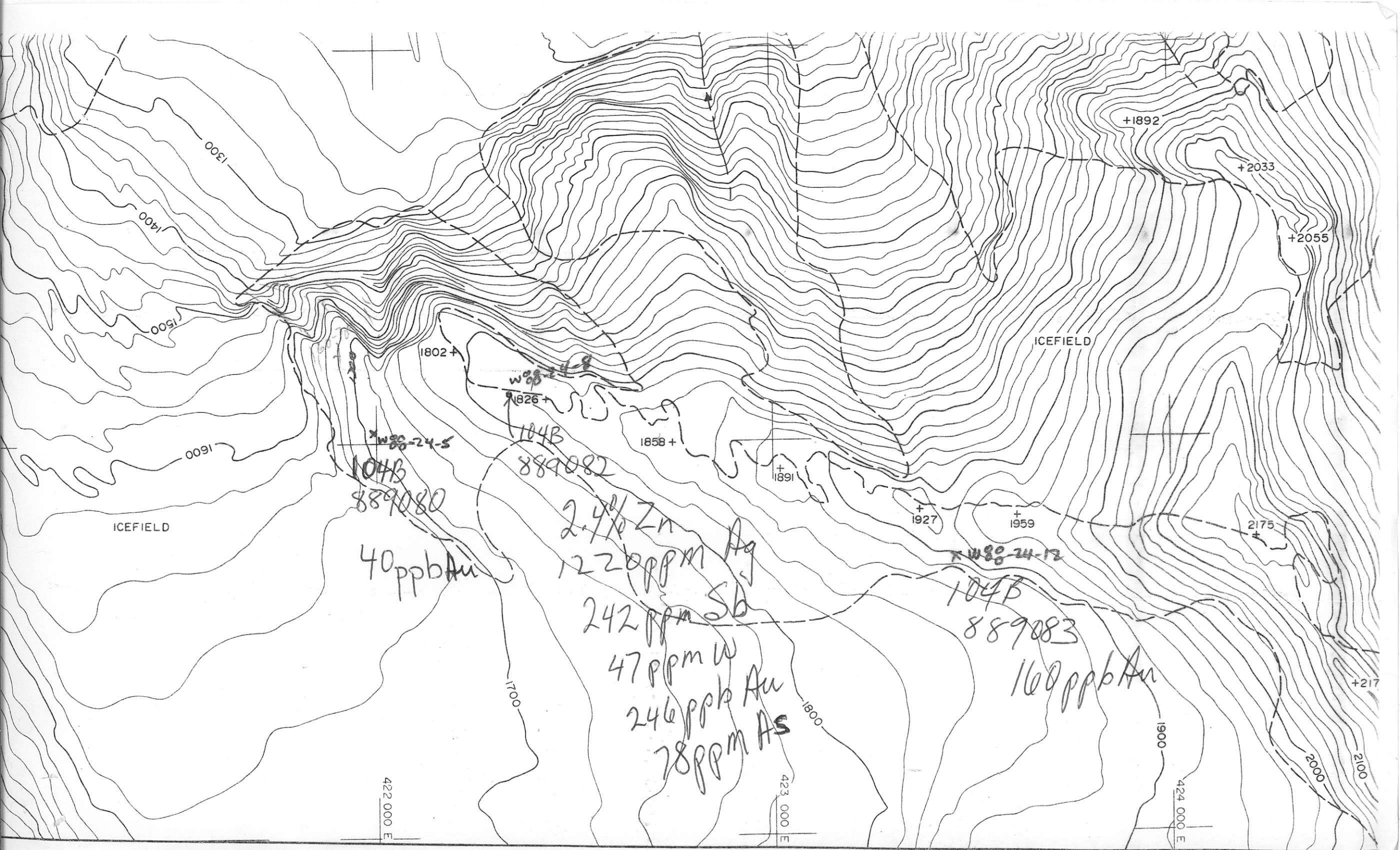
Bas. feldspar

REPORT: 089-51378.0

PROJECT: 23233-6-1332

PAGE 4C

SAMPLE NUMBER	ELEMENT UNITS	Tb PPM	Yb PPM	Lu PPM	Hf PPM	Ta PPM	W PPM	Ir PPB	Au PPB	Th PPM	U PPM	WT g
104B-889075		0.8	3	0.4	<1	0.7	13	<50	120	5.3	2.8	6.99
104B-889076		2.5	12	1.4	<2	<0.5	2	<50	790	1.3	<0.5	7.60
104B-889077		<0.5	<2	0.2	2	0.6	<1	<50	1010	4.3	2.2	6.82
104B-889078		<0.5	<2	<0.2	<1	<0.5	3	<50	37	3.1	1.8	6.66
104B-889079	SSO 4	0.8	3	<0.2	4	1.2	<1	<50	3	4.7	2.0	10.03
104B-889080	BCDM 4	1.2	3	0.4	2	0.8	<1	<50	44	2.0	1.6	7.58
104B-889081	Kerr South road	<0.5	<2	0.3	2	<0.5	3	<50	200	1.9	0.7	6.92
104B-889082		<1.0	8	0.9	<3	<0.5	47	<100	246	1.2	<0.6	10.50
104B-889083	end	<0.5	<2	<0.2	<1	0.7	4	<50	160	1.9	0.6	8.97
104B-889084		<0.5	<2	0.4	2	<0.5	14	<50	180	3.2	6.9	8.94
104B-889085	slaty pyrite Mitchell Valley zone	0.8	<2	0.6	<1	0.6	14	<50	58	5.4	8.3	5.57
104B-889086		<0.5	<2	0.5	<1	<0.5	3	<50	1740 Fe	0.9	1.6	8.37
104B-889087		<0.5	<2	0.5	3	<0.5	19	<50	57	4.5	7.0	7.53
104B-889088		<0.5	<2	0.7	<1	<0.5	10	<50	15100 Fe	<0.6	1.1	9.76
104B-889089		<0.5	16	1.2	<5	<1.0	9	<150	370	<1.8	<1.0	8.56
104B-889090		<0.5	10	<0.8	<4	<0.5	6	<120	677	<1.5	<0.8	8.19
104B-889091		0.6	17	0.6	<3	<0.5	<21	<50	1670	1.3	<1.4	6.74
104B-889092		0.6	<2	0.4	<1	<0.5	11	<50	678	1.3	0.5	6.52
104B-889093		<0.5	<2	0.2	<1	<0.5	2	<50	41	2.6	0.9	6.45
104B-889094		<0.5	10	1.3	<3	<0.5	<23	<50	190	1.5	<1.5	8.11
104B-889095		<0.5	<2	0.3	<1	<0.5	7	<50	623	1.2	<0.2	6.57
104B-889096		<0.5	<2	0.3	<1	<0.5	6	<50	150	2.0	1.1	6.87
104B-889097		<0.5	<2	0.4	1	<0.5	5	<50	65	2.6	1.1	8.80
104B-889098	SSO 6	1.1	7	1.3	4	2.3	17	<50	6	15.0	19.0	9.06
104B-889099		<0.5	<2	<0.2	<1	<0.5	6	<50	331	1.9	0.7	7.40
104B-889100		<0.5	<2	0.3	<1	0.5	3	<50	50	2.0	0.9	6.87
104B-889101		<0.5	<2	0.4	<1	<0.5	<1	<50	34	1.3	0.9	10.12
104B-889102		<0.5	<2	<0.4	<1	<0.5	10	<50	11500	<0.6	0.7	9.16
104B-889103		<0.5	<2	0.3	<1	<0.5	7	<50	635	1.5	0.8	6.81
104B-889104		0.6	19	<0.6	<3	<0.5	<23	<50	456	2.0	<1.5	6.35
104B-889105	Chips	<0.5	<2	<0.2	<1	<0.5	8	<50	1680	1.9	0.4	6.43
104B-889106	390 ft Bernice	<0.5	<2	<0.2	<1	<0.5	<1	<50	190	<0.7	<0.4	7.70
104B-889107	435 tetra vein	<30.0	<1330	<47.0	<220	<49.0	<5900	<8100	25700	<82.0	<200.0	9.39
104B-889108	0.2-4oz Au	<1.1	40	2.2	<7	<1.6	125	<230	3100	<2.8	<3.8	9.30
104B-889109	Di. orite with	0.5	<2	0.6	2	<0.5	6	<50	6780	1.7	1.0	8.87
104B-889110	North 4241 vein	<0.5	<2	<0.5	<2	<0.5	11	<50	1700	<0.9	<0.5	7.39
104B-889111	orthocl. pyrite	<0.5	<2	<0.2	2	<0.5	<1	<50	<2	2.2	2.2	7.60
104B-889112	slaty pyrite	<0.5	<2	<0.5	<1	<0.5	3	<50	212	<0.8	<0.5	8.88
104B-889113	pyrite zone	0.8	3	0.3	3	0.6	2	<50	4	6.7	3.4	7.52
104B-889114	like pyrite zone	<0.5	25	1.2	<5	<1.1	73	<150	625	<1.8	<2.3	7.17



ICEFIELD

ICEFIELD

W88-24-5

W88-24-8

W88-24-12

104B
889080

104B
889082

104B
889083

40 ppb Au

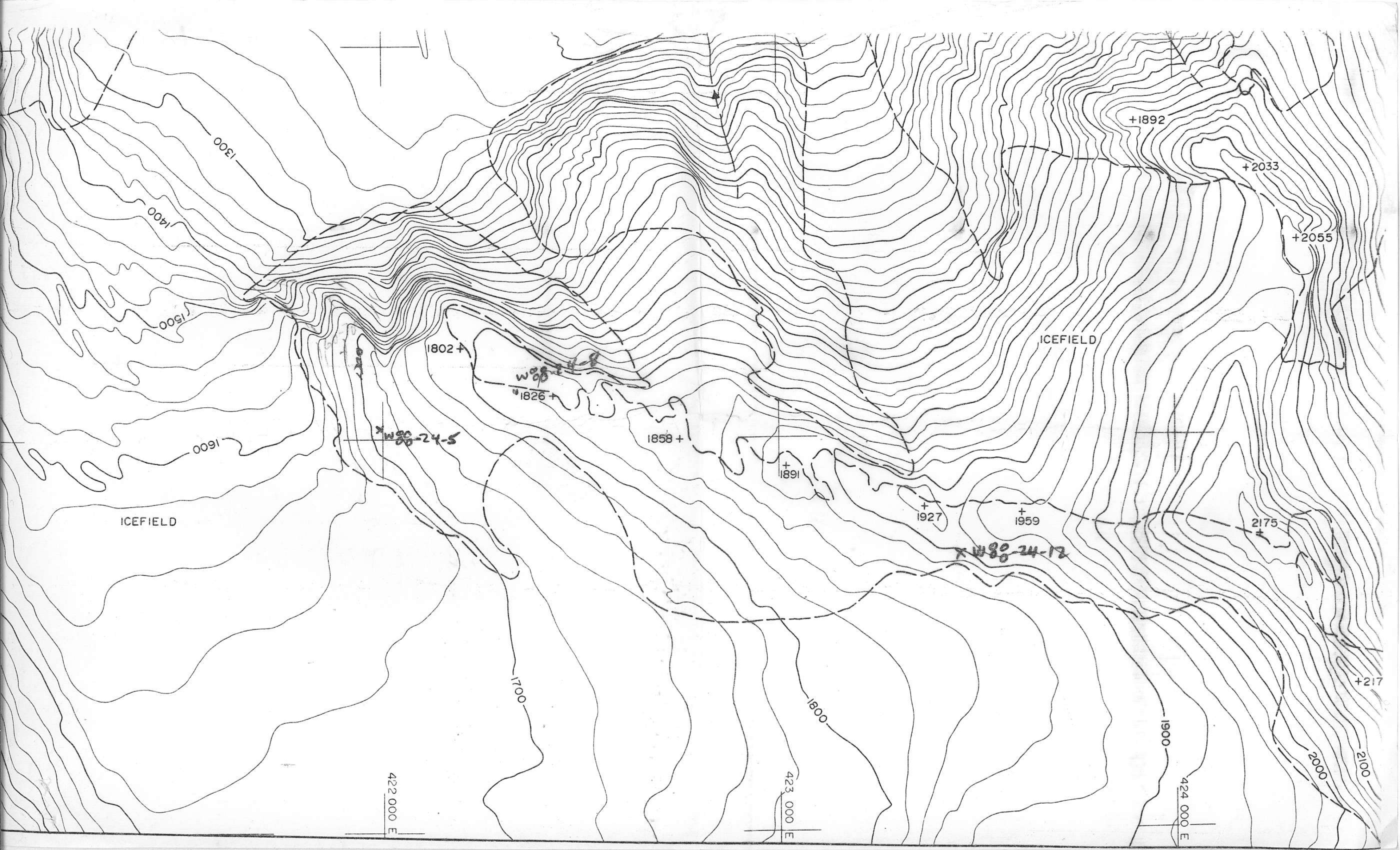
2.7% Zn
1220 ppm Ag
242 ppm Sb
47 ppm W
246 ppb Au
78 ppm As

160 ppb Au

422 000 E

423 000 E

424 000 E



+1892

+2033

+2055

ICEFIELD

+1802

W 80-24-5

+1826

+1858

+1891

+1927

+1959

W 80-24-12

+2175

ICEFIELD

+217

422 000 E

423 000 E

424 000 E