

WH-1976 - Mill Recovery Ag, 96.5%

801214 from Wm Hagg Feb. 10/77

K.K. MINES LTD PRODUCTION RECORD

W.H. estimates mining dilution @ about 60%

1976  
Pb, 96.0%  
Zn, 91.0%

1976(a) S.d.t.'s Pb Conc & S.d.t.'s Zn Conc.  
(b) Tons Ore Hauled = Tons Waste Hauled.

Year	Avg Mill Head					Avg Pb Conc Grade					Avg Zn Conc Grade			
	S.D.T. Milled	Oz Ag	% Pb	% Zn	% Cd	S.D.T. Pb Conc	Oz Ag	% Pb	% Zn	% Cd	S.D.T Zn Conc	Oz Ag	% Zn	% Cd
1970	12,930	19.01	7.58	6.79		1383.79	107.56	68.10	7.00		1345.47	72.20	55.14	0.43
1971	39,184	17.99	6.39	6.6		3625.54	100.83	65.57	7.50		3991.68	79.01	54.17	0.42
1972	27,429	16.44	5.81	6.62		2467.00	98.35	60.94	8.63		2707.00	67.37	54.67	0.45
1973	14,015	14.45	5.36	5.41	computed	1172.00	105.17	61.28	8.45		1132.64	59.04	52.45	0.42
1974	12,034	13.16	3.51	4.21	0.05 out %	726.00	125.65	54.71	8.83		747.00	79.00	51.11	0.39
1975	12,045	17.48	5.66	4.82	0.047	1082.00	120.14	60.24	8.22		834.58	84.20	51.60	0.39
1976	(18,401.6) 18,402	13.35	5.30	4.86		1556.25	98.68	59.23	9.14		1367.10	61.91	49.54	0.3744x1
<b>Total</b>	<b>136,039</b>	<b>16.43</b>	<b>5.81</b>	<b>5.89</b>	<b>0.047</b>	<b>12,012.45</b>	<b>104.48%</b>	<b>62.5%</b>	<b>8.12%</b>		<b>12,125.47</b>	<b>72.2</b>	<b>53.34</b>	<b>0.42</b>

Rec 31/76  
1970-76 136,039 @ 16.43oz  
136,039 T. → 2,235,121 oz  
Fixed @ 17.43oz  
17.43%  
0.58 T  
0.59 T  
0.00487  
65,298 T

Pb CONC. - WEIGHTED - AVG. CALLS.

Zn CONC. - WEIGHTED - AVG. CALLS.

Year	S.D.T.	Oz Ag	% Pb	% Zn	% Cd	Year	S.D.T.	Oz Ag	% Pb	% Zn	% Cd	Year	S.D.T.	Oz Ag	% Pb	% Zn	% Cd
1971	39,184	17.99	6.39	6.60		1970	1383.79	148,840.45	94,236.10	9686.53		1970	1345.47	97,142.93	74,189.22	578.55	
1972	27,429	16.44	5.81	6.62		1971	3625.54	365,563.19	237,726.65	27191.55		1971	3991.68	315,382.63	216,229.30	1676.06	
1971	39,184	17.99	6.39	6.60		1972	2467.00	242,629.45	150,338.98	21290.21		1972	2707.00	182,370.59	147,991.69	1218.15	
1972	27,429	16.44	5.81	6.62		1973	1172.00	123,259.24	71,820.16	9903.40		1973	1132.64	66,871.06	59,406.97	475.71	
	66,613	16.54	450,933	1593.62	1815.80	1974	726.00	91,221.90	39,719.46	6410.58		1974	747.00	59,013.00	38,179.17	291.33	
			4097.48	4401.94		1975	1082.00	129,991.48	65,179.68	8894.04		1975	834.58	70,271.36	43,064.33	325.49	
						1976	1556.25	153,570.75	92,176.69	14,224.12		1976	1367.10	84,637.16	67,726.13	511.29	
						<b>Σ, 1970-76 =</b>	<b>12,012.58</b>	<b>1255,076.4</b>	<b>751,197.72</b>	<b>97,600.43</b>		<b>Σ, 1970-76 =</b>	<b>12,125.47</b>	<b>875,688.73</b>	<b>646,786.10</b>	<b>5076.58</b>	
							12,012.58 @ 104.48%	62.5% Pb	8.12% Zn	0.064% Cd			12,125.47 @ 72.22 oz/T	53.34% Zn	0.42% Cd		
							12,012.58 T. → 1,255,076.4	751,197.72 T.	97,600.43 T.				12,125.47 T. → 875,688.73	646,786.10 T.	50,927 T.		

at 100%  
75%  
at 100%  
Cd = 0.42

at 1976  
Pb in Zn  
Conc = 1.5%  
Pb in Zn  
Conc = 1.5%

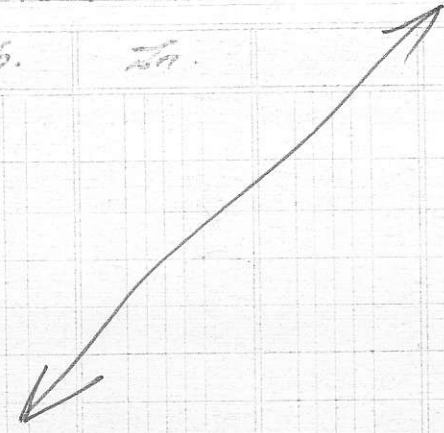
Rec'd from Bill H. - Feb. 2/77

M.I.T. Heads.

~~Production~~

Recoveries.

YEAR.	Dry Tons Milled.	Ag. oz	Pb. #	Zn #
1970	12,930	252,940	1,940,999	1,744,993
71	39,184	698,272	5,002,521	5,154,762
72	27,429	450,841	3,187,305	3,039,037
73	14,015	202,504	1,513,201	1,517,227
74	12,034	158,422	945,153	1,012,970
75	12,045	226,637	1,364,687	1,153,653
76	18,402	245,777	1,953,114	1,789,277



to Dec 31/76 -- 136,039

2,235,395	15,867,000	16,011,924
✓ 16.43	✓ 5.81	✓ 5.89
16.4	5.8	5.9

96.5%    96.0    91.0%