

3-425

3-600

3-500

3-425

adjust 8'

N59W

N67W

N62W

3-325

3-225

N60W

3-125

N58W

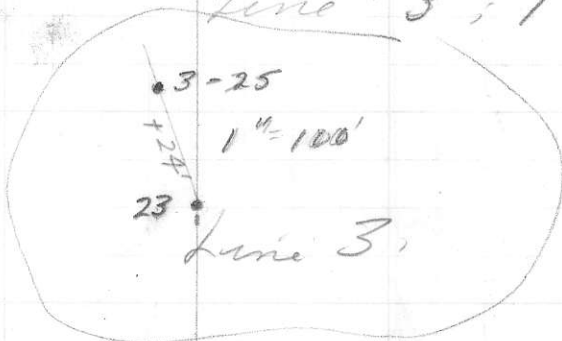
3-25

1025-20

N45W

100 + 16°
N60W 110 + 21°

Line # 3; 1" = 50'



1025.0
52.5
972.5

Section X-Seco.
COULTER CREEK

7-25-66

1" = 400' W.S. & J. L.A.F.

801006