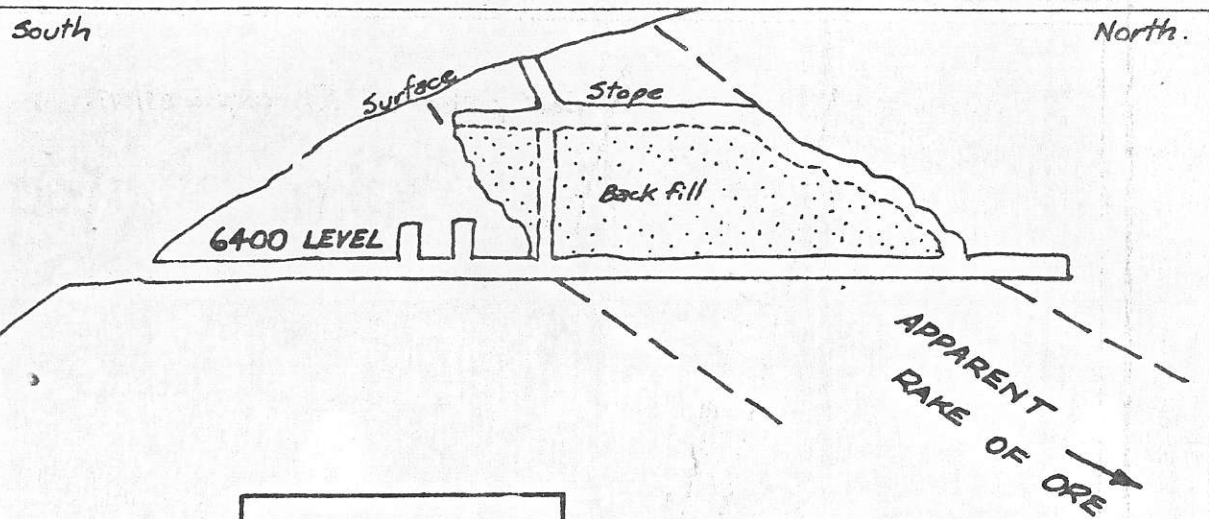


Best potential for exploration.



SECTION ALONG MAIN VEIN

6000 LEVEL

5400 LEVEL

DOLMAGE-CAMPBELL & ASSOCIATES CONSULTANTS
VANCOUVER, CANADA

EMERALD GLACIER MINE.
Tahtsa Lake, B.C.

UNDERGROUND WORKINGS - EMERALD GLACIER.

PLAN of VEINS

SHOWING EXTENT OF DEVELOPMENT

SCALE 1" = 100'

Sept. 10, 1965

FIG. 1