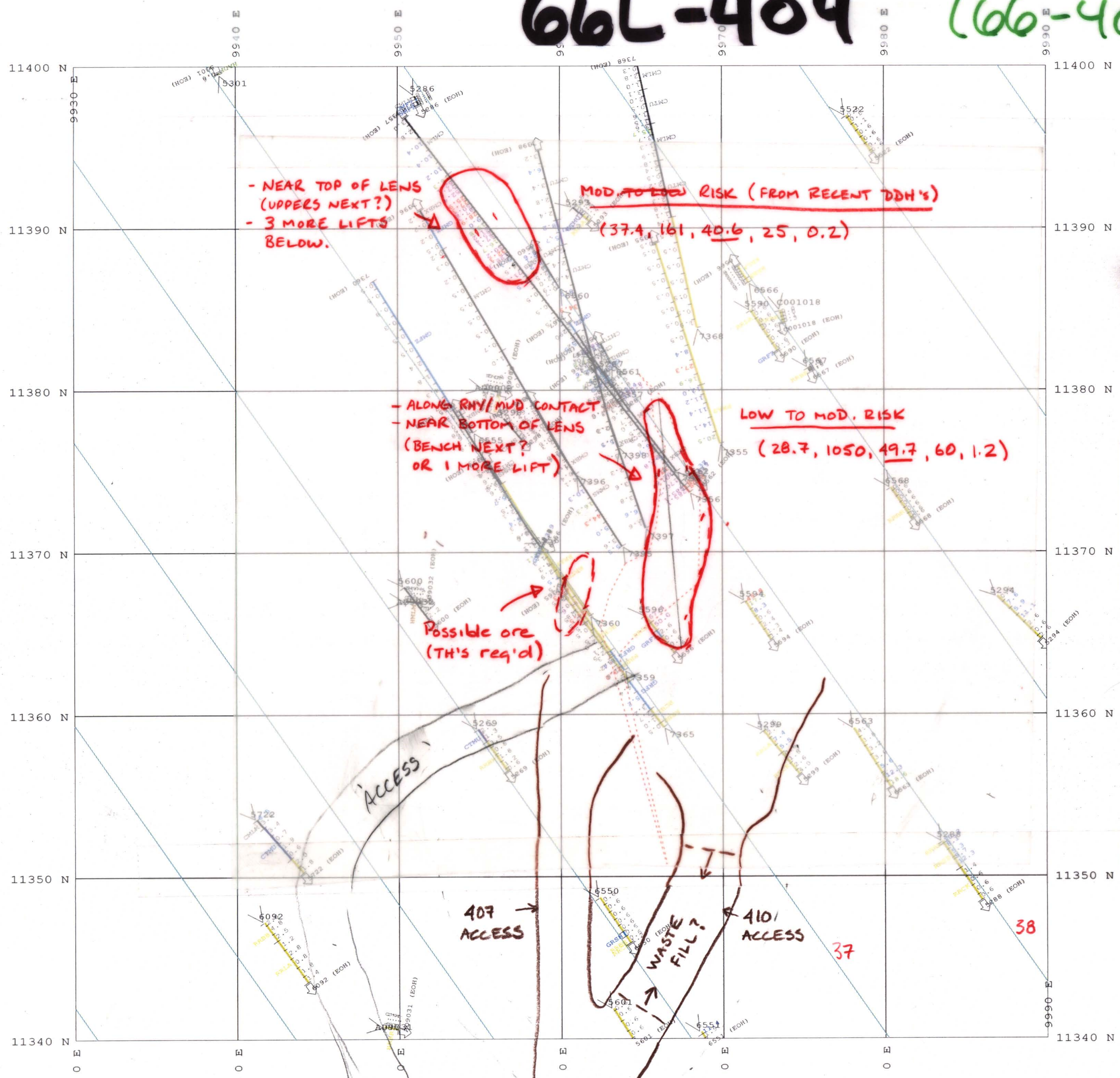


P74

# 66L-404

(66-404)



**LEGEND**

**Data Fields**

Annotation and trace scheme GEOLOGY

BC*	BD*	BM*
BT*	BT*	BT*
CA*	CA*	CA*
CB*	CB*	CB*
CC*	CC*	CC*
CD*	CD*	CD*
CE*	CE*	CE*
CF*	CF*	CF*
CG*	CG*	CG*
CH*	CH*	CH*
CI*	CI*	CI*
CJ*	CJ*	CJ*
CK*	CK*	CK*
CL*	CL*	CL*
CM*	CM*	CM*
CN*	CN*	CN*
CO*	CO*	CO*
CP*	CP*	CP*
CQ*	CQ*	CQ*
CR*	CR*	CR*
CS*	CS*	CS*
CT*	CT*	CT*
CU*	CU*	CU*
CV*	CV*	CV*
CW*	CW*	CW*
CX*	CX*	CX*
CY*	CY*	CY*
CZ*	CZ*	CZ*
DA*	DA*	DA*
DB*	DB*	DB*
DC*	DC*	DC*
DD*	DD*	DD*
DE*	DE*	DE*
DF*	DF*	DF*
DG*	DG*	DG*
DH*	DH*	DH*
DI*	DI*	DI*
DJ*	DJ*	DJ*
DK*	DK*	DK*
DL*	DL*	DL*
DM*	DM*	DM*
DN*	DN*	DN*
DO*	DO*	DO*
DP*	DP*	DP*
DQ*	DQ*	DQ*
DR*	DR*	DR*
DS*	DS*	DS*
DT*	DT*	DT*
DU*	DU*	DU*
DV*	DV*	DV*
DW*	DW*	DW*
DX*	DX*	DX*
DY*	DY*	DY*
DX*	DX*	DX*
DY*	DY*	DY*
DX*	DX*	DX*
DY*	DY*	DY*

Non-logged intervals displayed (Value NVL)  
 V Enter extents symbol  
 O Exit extents symbol  
 ◆ Section view cutting plane pierce symbol  
 X Vertical trace in plan view symbol

**AUEQ (File ESKY.MIN)**  
 Annotation scheme AUEQ

-1000000.000	0.000
0.000	5.000
5.000	8.000
8.000	15.000
15.000	23.000
23.000	50.000
50.000	100000.000
DEFAULT	

**Triangulations**

- V:/ESKAY.D/RESERVES.TRI/06 21B UNDIR ALL.00T
- V:/ESKAY.D/RESERVES.TRI/06 21C UNDIR ALL.00T
- V:/ESKAY.D/RESERVES.TRI/06 21E UNDIR ALL.00T
- V:/ESKAY.D/RESERVES.TRI/06 HW UNDIR ALL.00T
- V:/ESKAY.D/RESERVES.TRI/06 NEX UNDIR ALL.00T
- V:/ESKAY.D/RESERVES.TRI/06 PMP UNDIR ALL.00T
- V:/ESKAY.D/RESERVES.TRI/06 WT UNDIR ALL.00T

**Development**

46m? @ 3000/m  
 = \$138,000

**1st Block**  
 430T @ 49.7 g/t AuE  
 (690 oz) 15x3x3 =

**2nd Block**  
 230T @ 40.6 g/t AuE  
 (300 oz)

**Upside potential**

- if mined properly, could achieve 60g/t
- benching of both lenses, add 150t

66L-404 ORE MIN. JUR  
 LOW TO MOD. RISK  
 APR 8/07 DB

**Eskay Creek Mine**

66L \_ 404 Ore Contour  
 403.1Mid lift

Scale:1:250
Date:07-Apr-2007
Project:ESKY
Drawn By:DB
Checked: