

BGM

TSX.V: BGM

BARKERVILLE GOLD MINES

INVESTOR PRESENTATION SEPTEMBER 2016



HIGH GRADE
HIGH RETURNS
LOW ENVIRONMENTAL IMPACT

700116

CORPORATE OVERVIEW

CHRIS LODDER
PRESIDENT AND CEO

FORWARD LOOKING STATEMENT

This presentation and the material contained herein are confidential and are for information purposes only and may not be reproduced or distributed to any other person or published, in whole or in part, for any purpose whatsoever. This presentation and the material contained herein do not constitute a general advertisement or general solicitation or an offer to sell or a solicitation to buy any securities in any jurisdiction. Such an offer can only be made by prospectus or other authorized offering document. This presentation and materials or fact of their distribution or communication shall not form the basis of, or be relied on in connection with, any contract, commitment or investment decision whatsoever in relation thereto. Barkerville Gold Mines Ltd.'s (the "Company") securities have not been registered under the United States Securities Act of 1933, as amended, and may not be offered or sold within the United States or to or for the account or benefit of U.S. Persons absent U.S. Registration or an applicable exemption from U.S. registration requirements. Any public offering in the United States must be made by means of a prospectus containing detailed information about the Company and management, as well as financial statements. The information in this presentation is not intended in any way to qualify, modify or supplement any prospectus or other information disclosed under the corporate and securities legislation of any jurisdiction relating to the Company. No securities commission or similar authority in Canada has in any way passed upon the adequacy or accuracy of the information contained in this presentation.

Some of the statements contained in the following material are "forward-looking statements". All statements in this presentation, other than statements of historical facts, that address estimated mineral resource and reserve quantities, grades and contained metal, and possible future mining, exploration and development activities, are forward-looking statements. Although the Company believes the expectations expressed in such forward-looking statements are based on reasonable assumptions, such statements should not be in any way construed as guarantees of future performance and actual results or developments may differ materially from those in the forward-looking statements. Accordingly, readers should not place undue reliance on forward-looking statement or information. Factors that could cause actual results to differ materially from those in forward-looking statements include market prices for metals, the conclusions of detailed feasibility and technical analyses, lower than expected grades and quantities of resources, mining rates and recovery rates and the lack of availability of necessary capital, which may not be available to the Company on terms acceptable to it or at all. All phases of the Company's operations are subject to environmental regulation and government approval and permits and there can be no assurance that the Company will obtain all the requisite permits for future development. The Company is subject to the specific risks inherent in the mining business as well as general economic and business conditions. The Company does not intend, and does not assume any obligation, to update these forward-looking statements, except as required under applicable securities legislation. For more information on the Company, readers should refer to www.sedar.com for the Company's filings with the Canadian securities regulatory authorities.

STRONG LEADERSHIP

CHRIS LODDER PRESIDENT/CEO/DIRECTOR

- 25+ YEARS OF GREENFIELD AND BROWNFIELD EXPLORATION
- PRESIDENT OF TALISKER EXPLORATION SERVICES, FORMER EXPLORATION MANAGER FOR THE AMERICAS FOR ANGLOGOLD ASHANTI.
- TALISKER TEAM RESPONSIBLE FOR 28 MOZ IN 3 GREENFIELD DISCOVERIES

PAUL GEDDES, VP EXPLORATION, P.GEO, QP

- NORANDA MINING AND EXPLORATION LTD., TECK EXPLORATION LTD.
- 1000% INCREASE IN GLOBAL GOLD RESOURCES FOR RAINY RIVER PRIOR TO THE COMPANY'S TAKEOVER BY NEW GOLD IN OCTOBER 2013

LUC LESSARD, CHIEF OPERATING OFFICER, P.ENG.

- 25 YEARS OF EXPERIENCE DESIGNING, BUILDING AND OPERATING MINES.
- PRESENTLY CEO AND DIRECTOR OF FALCO RESOURCES, SENIOR VICE-PRESIDENT, TECHNICAL SERVICES OF OSISKO GOLD ROYALTIES, AND SITS ON THE BOARD OF DIRECTORS OF HIGHLAND COPPER AND BOWMORE EXPLORATION.

CHRIS PHARNES, VP ENVIRONMENT AND SUSTAINABILITY

- ENVIRONMENTAL PROFESSIONAL WITH STRONG BACKGROUND IN ENVIRONMENTAL MANAGEMENT AND MITIGATION ON NORTH CENTRAL BC
- RESPONSIBLE FOR GOVERNMENT, COMMUNITY AND FIRST NATIONS RELATIONS

ANDRES TINAJERO, CHIEF FINANCIAL OFFICER, CPA, MBA, ICD.D

- 20+ YEARS OF FINANCIAL AND RISK MANAGEMENT OF PUBLIC COMPANIES ACROSS NORTH AMERICA. HE HAS SUPPORTED A BOARD RANGE OF INDUSTRIES INCLUDING: NATURAL RESOURCES, MANUFACTURING & TECHNOLOGY.

SEAN ROOSEN CO-CHAIRMAN

- CHAIRMAN AND CEO OSISKO GOLD ROYALTIES INC.
- LED THE TRANSITION OF OLD OSISKO FROM A JUNIOR EXPLORATION COMPANY TO A LEADING INTERMEDIATE GOLD PRODUCER.
- INSTRUMENTAL IN \$1 BILLION FINANCING AND DEVELOPMENT OF MALARCTIC MINE.

THOMAS OBRADOVICH DIRECTOR

- 30+ YEARS MINING EXPLORATION, DEVELOPMENT
- PRESIDENT AND CEO OF YOUNG DAVIDSON MINES
- CO-FOUNDER AND LEAD DIRECTOR OF AURELIAN RESOURCES, ACQUIRED BY KINROSS GOLD MINES FOR \$1.2 BILLION
- LEAD DIRECTOR, DALDARIAN RESOURCES

ANTHONY MAKUCH DIRECTOR

- PROFESSIONAL ENGINEER (ONTARIO)
- PRESIDENT AND CEO OF KIRKLAND LAKE GOLD
- FORMER PRESIDENT AND CEO OF LAKE SHORE GOLD
- FORMER SENIOR VP AND COO OF FXN MINING COMPANY INC.

MORRIS PRYCHIDNY DIRECTOR

- CACPA LIFE MEMBER
- SERVES AS CHAIR OF BGM'S AUDIT COMMITTEE
- AUDIT COMMITTEE CHAIR FOR NORTHFIELD CAPITAL
- DIRECTOR AT NIGHTHAWK GOLD CORP.

GREG GIBSON CO-CHAIRMAN

- MINE MANAGER OF DYNATEC. PRESIDENT AND CEO OF TRELAWNEY MINING AND EXPLORATION WHEN ACQUIRED BY IAMGOLD FOR \$608 M
- CURRENTLY PRESIDENT & CEO OF JERRITT CANYON GOLD LLC & SPROTT MINING INC

JOHN KUTKEVICIUS DIRECTOR

- PARTNER AT WILDEBOER DELLECE LLP
- CORPORATE AND TAX LAW SPECIALIST
- MEMBER OF THE COMPENSATION COMMITTEE

ALLAN FOLK DIRECTOR

- PENSION PORTFOLIO MANAGER
- INSTITUTIONAL EQUITY SALES
- FINANCIAL ADVISOR

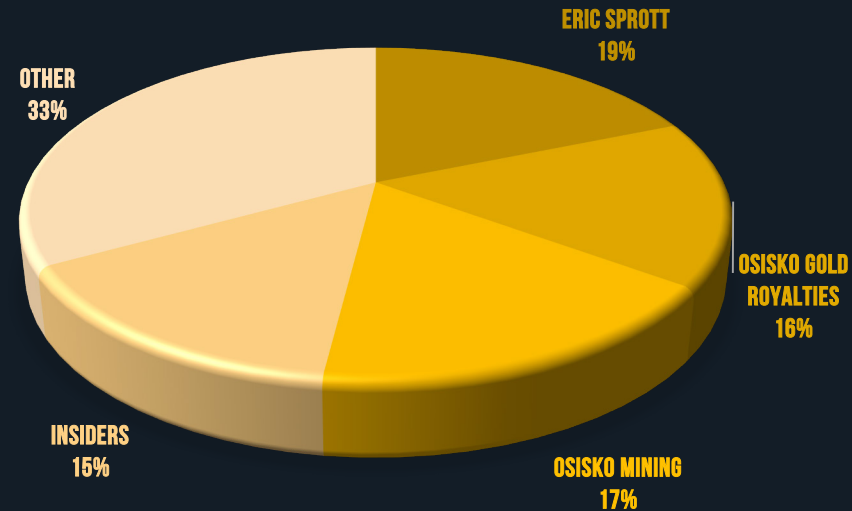
IAN GORDON DIRECTOR

- FOUNDER AND WRITER FOR LONG WAVE GROUP
- LONG DISTINGUISHED CAREER AS A BROKER
- FORMER VP OF BOLDER INVESTMENT PARTNERS

CURRENT SHARE STRUCTURE

(SEPT 1, 2016)

BASIC SHARES OUTSTANDING	301,225,657
WARRANTS	12,994,950
OPTIONS	17,087,661
FULLY DILUTED	331,308,268
52 WEEK RANGE	\$0.20 – \$0.76
CASH (MAY 30 2016)	~43 M
MARKET CAPITALIZATION	~\$205M



THE VISION:

BUILD A SUSTAINABLE, LOW IMPACT,
HIGH SOCIO-ECONOMIC RETURN
MINING COMPANY, IN BRITISH
COLUMBIA'S HISTORIC CARIBOO
MINING DISTRICT

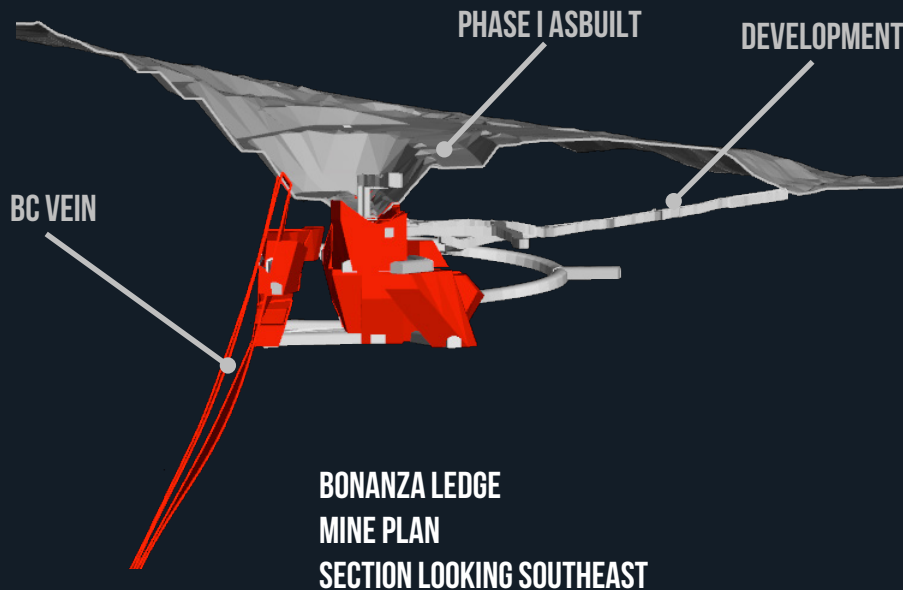
- **SHORT TERM GOAL:** INITIATE UNDERGROUND PRODUCTION FROM BONANZA LEDGE & BC VEIN WITH PROCESSING AT THE QR MILL
- **LONG TERM OBJECTIVE:** DEFINE NEW RESOURCES & RESERVES IN ORDER TO JUSTIFY A LONG LIFE MINING OPERATION WITH AN NEAR SITE, MILLING FACILITY

2016 PRIORITY TASKS

- COMPLETE AND SUBMIT MINES ACT PERMIT AMENDMENT : SUBMITTED AUGUST 2016
- COMMENCE UNDERGROUND DEVELOPMENT AT BONANZA LEDGE
- FIRST PHASE EXPLORATION DRILLING AT COW, BARKERVILLE AND ISLAND MOUNTAINS
- UNDERGROUND MAPPING AND SAMPLING ON COW AND ISLAND MOUNTAINS
- COMPLETE REGIONAL SOILS, GEOPHYSICS AND PROSPECTING OVER MAIN TRENDS
- UPDATE ALL PERMITS, BASELINE STUDIES AND RECLAMATION PLANS

BONANZA LEDGE 2016 MINE PLAN

LOOKING SE



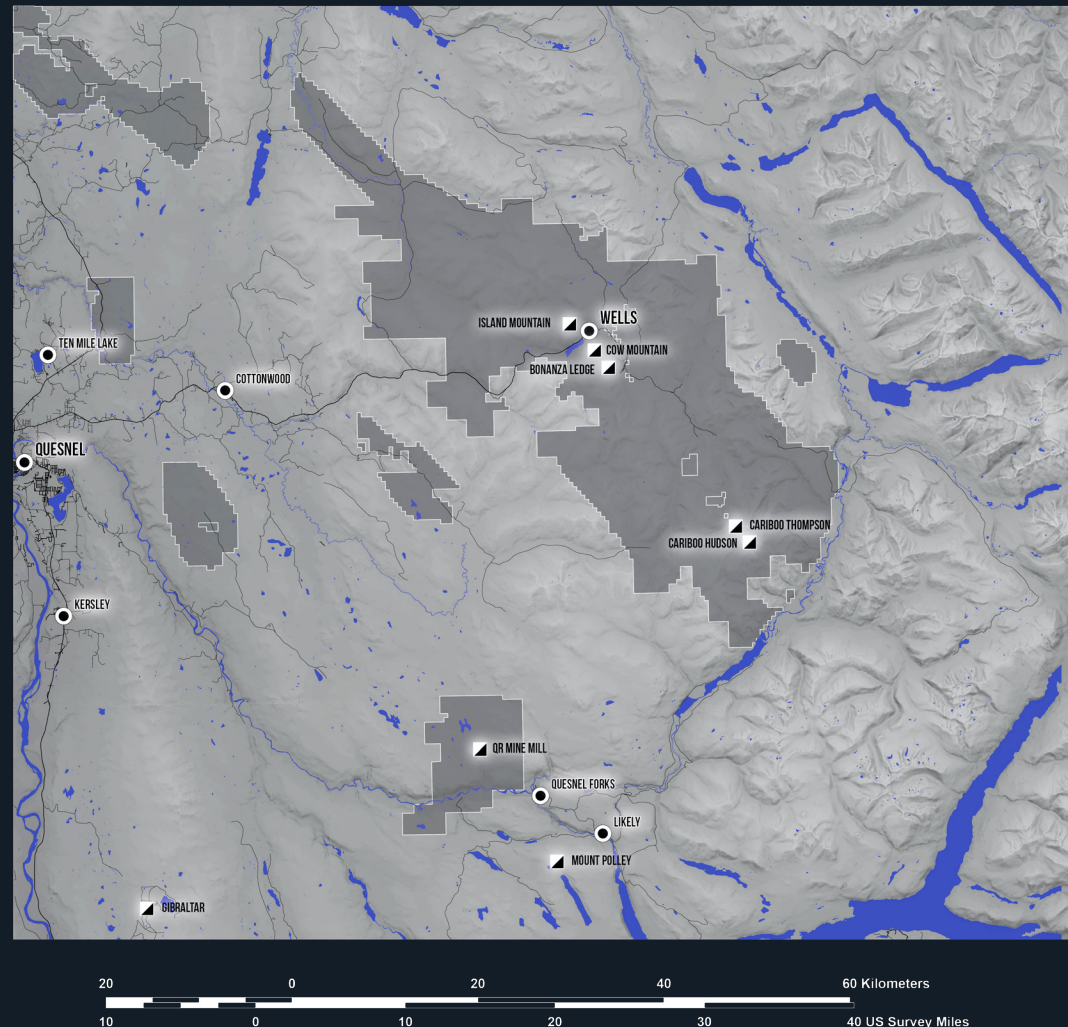
- WHOLLY UNDERGROUND OPERATION
- CONTRACT MINING
- ORE TRUCKED TO QR MILL
- LONG HOLE AND CEMENTED ROCK FILL
- ~500 TPD – 150,000 T / YR
- INITIAL LIFE OF MINE ~2 YEARS
- TARGETING ~ 30,000 OZ / YR
- ~300,000 TONNES AT ~7.0 GPT AU
- INITIAL CAPITAL C\$ 7 M

EXPLORATION OVERVIEW

PAUL GEDDES, P.GEO
VICE PRESIDENT — EXPLORATION
QUALIFIED PERSON

BRITISH COLUMBIA'S CARIBOO GOLD DISTRICT

- 211,900 HA OF MINERAL RIGHTS
- 95% CONTROLLED BY BGM
- ~3.2 MOZ OF RECORDED ALLUVIAL GOLD PRODUCTION
- HISTORIC LODE MINES PRODUCED 1.3 MOZ



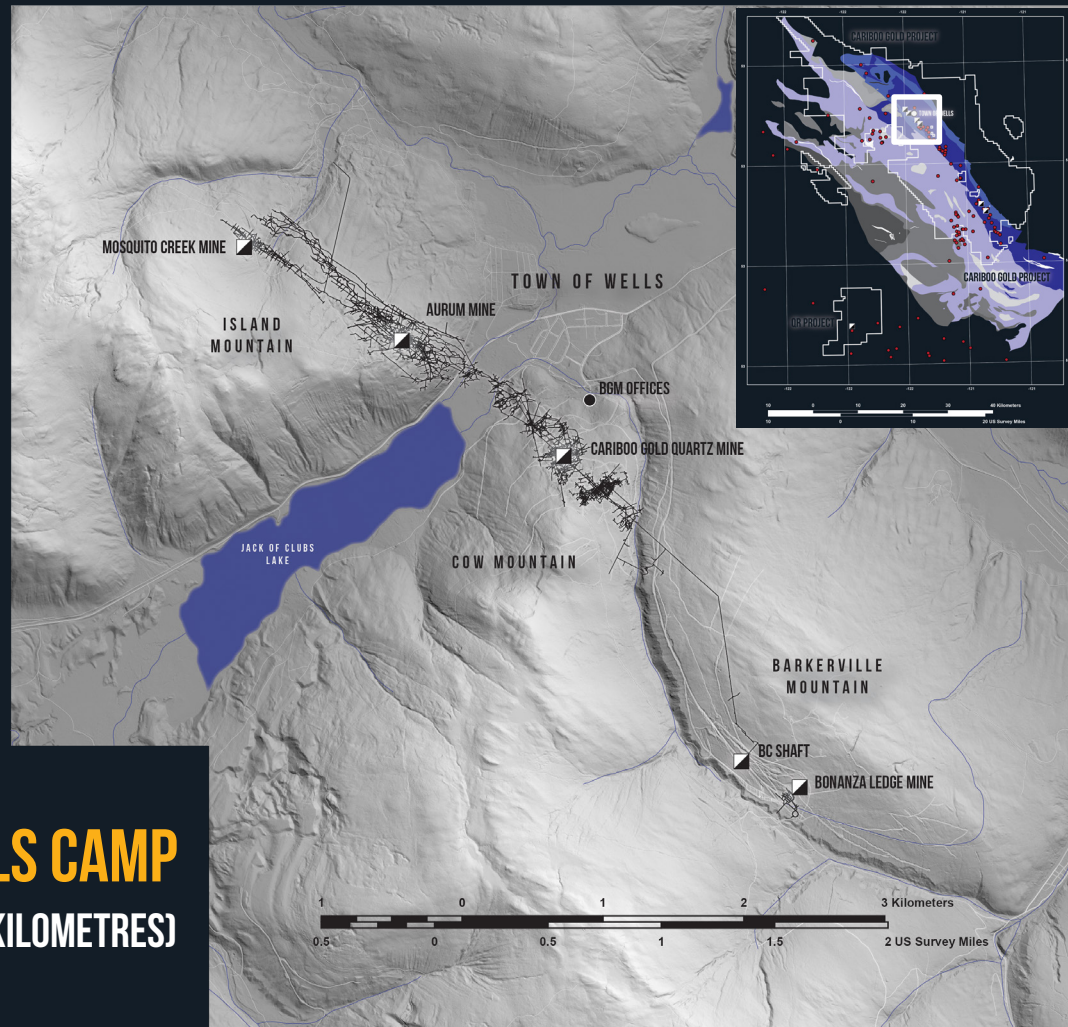
PLACER PRODUCTION

- 101 CREEKS **3.2 MOZ** 1858-PRESENT

HARD ROCK PRODUCTION

- THREE PAST PRODUCERS - **1.24 MOZ**
 - CAMP GRADE AVERAGE **0.41 OZ/T**
 - AURUM MINE - **0.57 MOZ** 1934-1967
 - CARIBOO GOLD QUARTZ MINE - **0.63 MOZ** 1933-1959
 - MOSQUITO CREEK MINE - **0.03 MOZ** 1980-1987
 - BONANZA LEDGE - **0.01 MOZ** 2014-2015
- JURASSIC AGED **MESOTHERMAL VEIN AND REPLACEMENT** DEPOSITS

THE WELLS CAMP (6 KILOMETRES OF 67 KILOMETRES)



LOOKING NORTHEAST
(6 KILOMETRES OF 67 KILOMETRES)

TARGET - STEEPLY DIPPING VEIN SETS, REPLACEMENT SULPHIDES

TARGET - STEEPLY DIPPING VEIN SETS

TARGET - STEEPLY DIPPING VEIN SETS, REPLACEMENT SULPHIDES

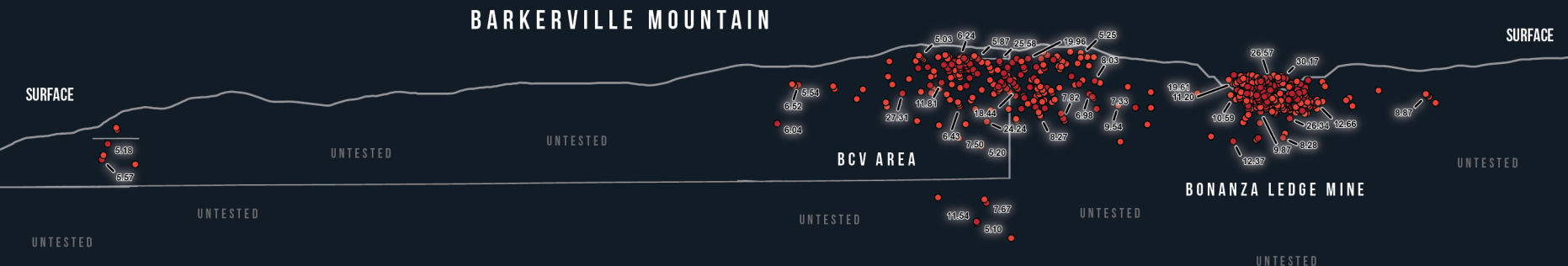


MINE/AREA		QUARTZ ORE		PYRITE ORE		TOTAL ORE RECOVERED		TOTAL RECOVERED	
	MINING PERIOD	TONS	OZ/TON	TONS	OZ/TON	TONS	GRADE OZ/TON	AU OZ	AG OZ
CARIBOO GOLD QUARTZ MINE	1933-1959	1,626,699	0.39	55,252	0.60	1,681,951	0.37	626,766	56,092
ISLAND MOUNTAIN AND AURUM MINES	1934-1967	761,646	0.35	483,649	0.67	1,245,295	0.46	569,528	81,658
MOSQUITO CREEK GOLD MINE	1980-1983	7,969	0.14	78,279	0.45	86,248	0.32	27,384	7,747
MOSQUITO CREEK GOLD MINE	1984-1987	-	-	16,900	0.44	16,900	0.41	6,897	2,134
TOTALS (TONNAGE WEIGHTED GRADE)		2,396,314	0.38	634,080	0.63	3,030,394	0.41	1,230,564	147,631

BARKERVILLE MOUNTAIN LONG SECTION

LOOKING NORTHEAST

- ~50,000 M OF DRILLING COMPLETED SINCE Q3 2015
- EXPAND AND CONVERT HIGHER GRADE ZONES TO RESERVES IN 2017 AND 2018
- OPEN ALONG STRIKE AND DEPTH
- SHORT TERM FEED TO SUPPLEMENT BONANZA LEDGE



HISTORICAL DRILLHOLE GOLD COMPOSITES

- AU \geq 0.5 AND AU \leq 1.00
- AU \geq 1.00 AND AU \leq 5.00
- AU \geq 5.00 AND AU \leq 280.0

○ NEW DRILLHOLE PIERCE POINT
HOLE-ID: AU (G/T) / CORE LENGTH (M)

■ HISTORICAL UNDERGROUND DEVELOPMENT

■ HISTORICAL STOPE

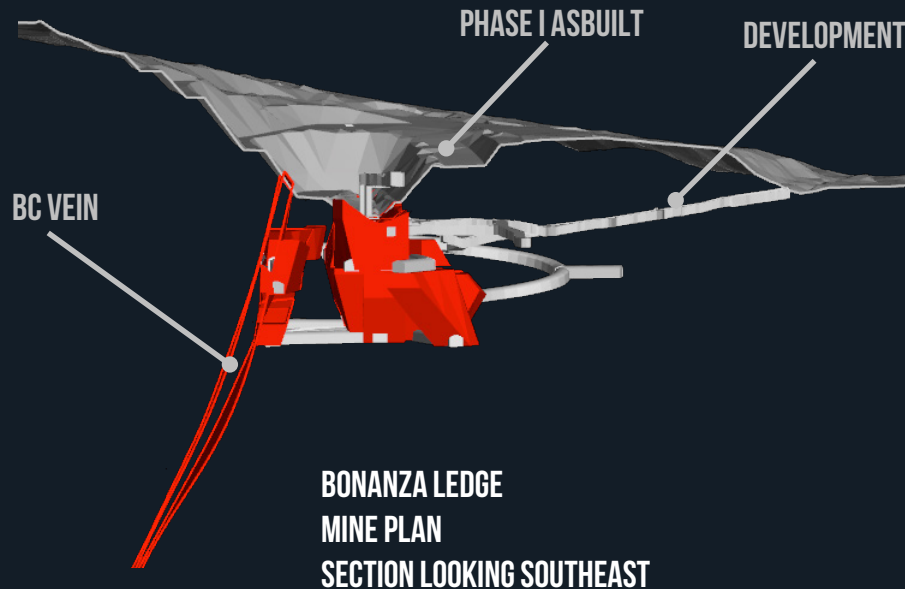
EXPLANATORY NOTES:

HISTORICAL DRILLHOLE COMPOSITES GENERATED WITH GEMCOM SOFTWARE OPTIMAL VALUE COMPOSITING ROUTINE UTILIZING A 2.0 G/T AU CUTOFF; MINIMUM 3.0 METRE COMPOSITE LENGTH AND NO WASTE CARRYING APPLIED. NO TOP CUTTING TO HIGH GRADE ASSAYS WAS APPLIED. UNSAMPLED INTERVALS WERE ASSIGNED ZERO GRADE.



BONANZA LEDGE 2016 MINE PLAN

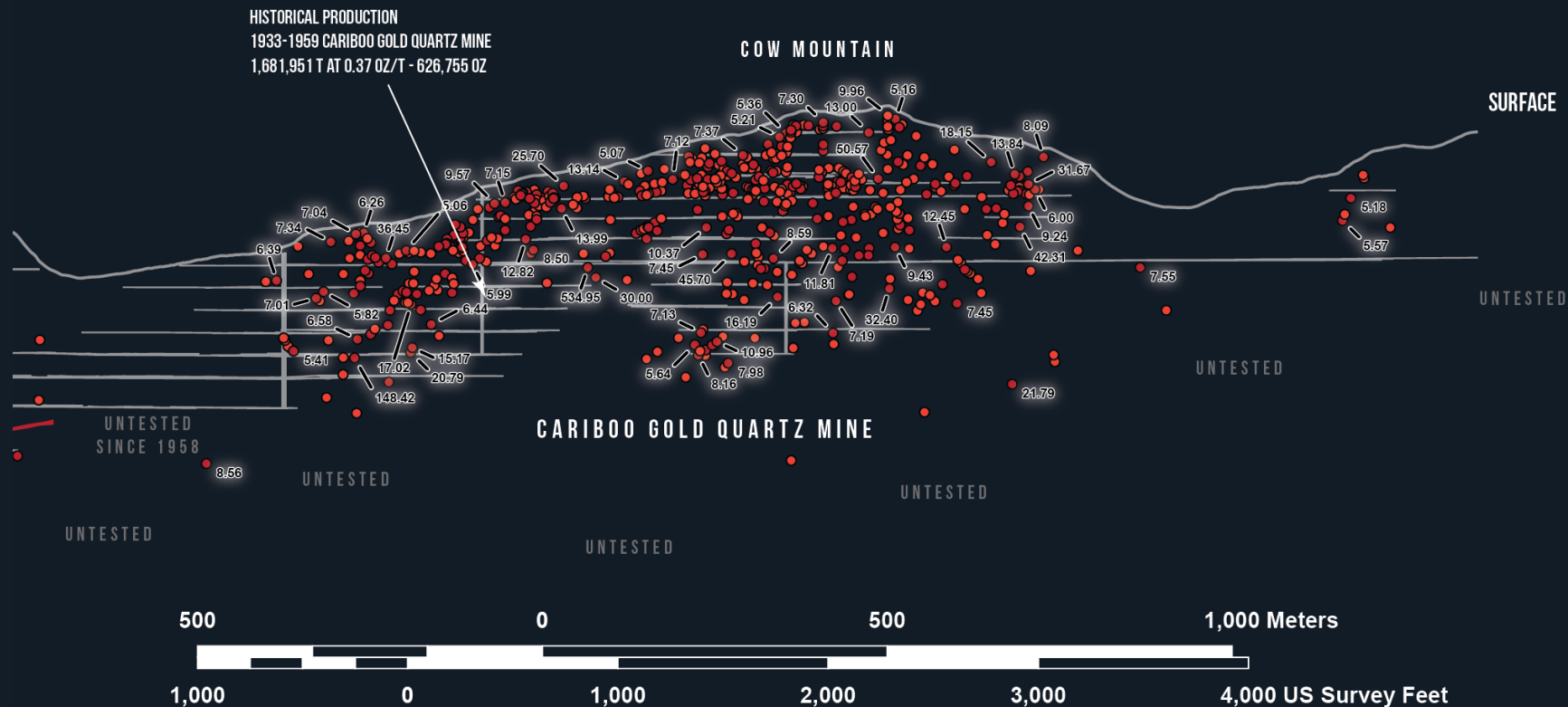
LOOKING SE



- WHOLLY UNDERGROUND OPERATION
- CONTRACT MINING
- ORE TRUCKED TO QR MILL
- LONG HOLE AND CEMENTED ROCK FILL
- ~500 TPD – 150,000 T / YR
- INITIAL LIFE OF MINE ~2 YEARS
- TARGETING ~ 30,000 OZ / YR
- ~300,000 TONNES AT ~7.0 GPT AU
- INITIAL CAPITAL C\$ 7 M

COW MOUNTAIN LONG SECTION

LOOKING NORTHEAST

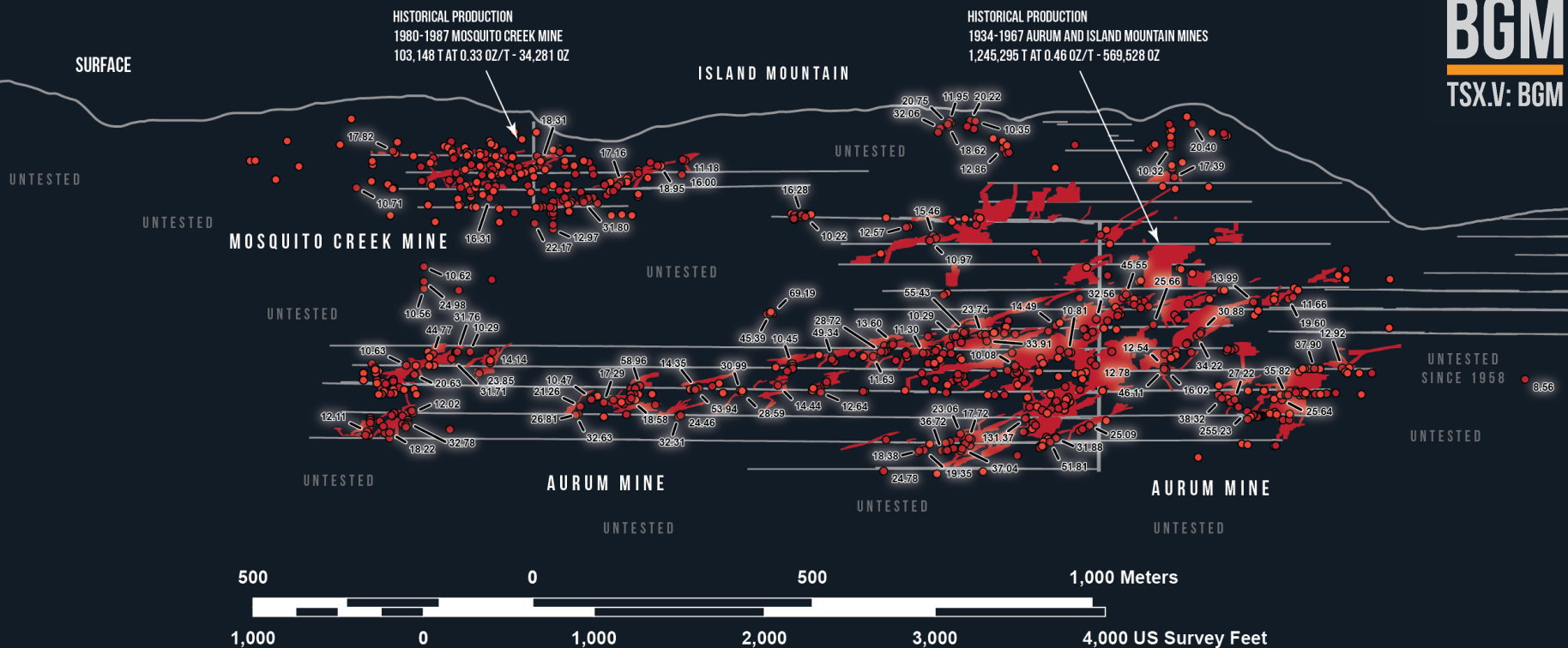


COW MOUNTAIN EXPLORATION UPDATE



CARIBOO GOLD QUARTZ MINE
~1930

- ~32,000 METRE OF SHALLOW DRILLING COMPLETE IN 2016
- ~56,000 METRES OF HISTORICAL CORE RE-LOGGED
- VERTICALLY DIPPING VEINS AND FAULT FILL
- NEW GEOLOGY MODEL (LITHOLOGY, STRUCTURE, ALTERATION AND MINERALIZATION) COMPLETE TO CONSTRAIN RESOURCE ESTIMATE AND GUIDE FUTURE EXPLORATION
- UG SAMPLING AND MAPPING COMPLETED ON 1200 LEVEL
- PROGRAM DESIGNED TO UPGRADE NEAR SURFACE AREAS OF LOW CONFIDENCE & SELECTIVELY REPLACE SOME HISTORIC DRILLING



- **PHASE I DRILLING IN PROGRESS**
- **VEIN AND REPLACEMENT STYLE MINERALIZATION**
- **LAST DRILLING CAMPAIGN 2004**
- **DISJOINTED LANDS PROHIBITED EXPLORATION AND DEVELOPMENT**

ISLAND MOUNTAIN LONG SECTION

LOOKING NORTHEAST

ISLAND MOUNTAIN EXPLORATION UPDATE

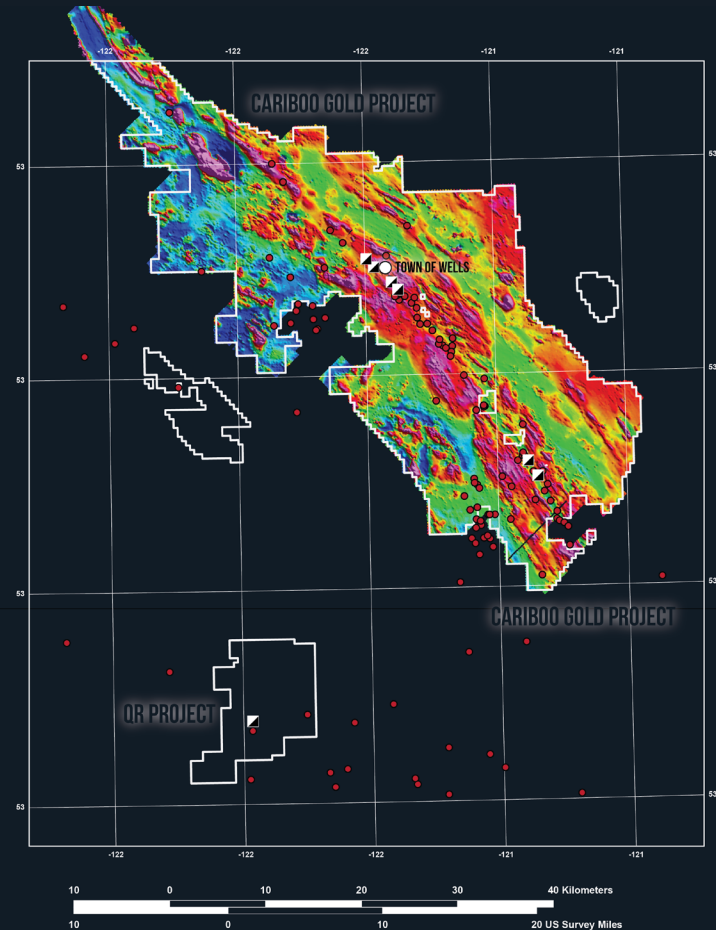
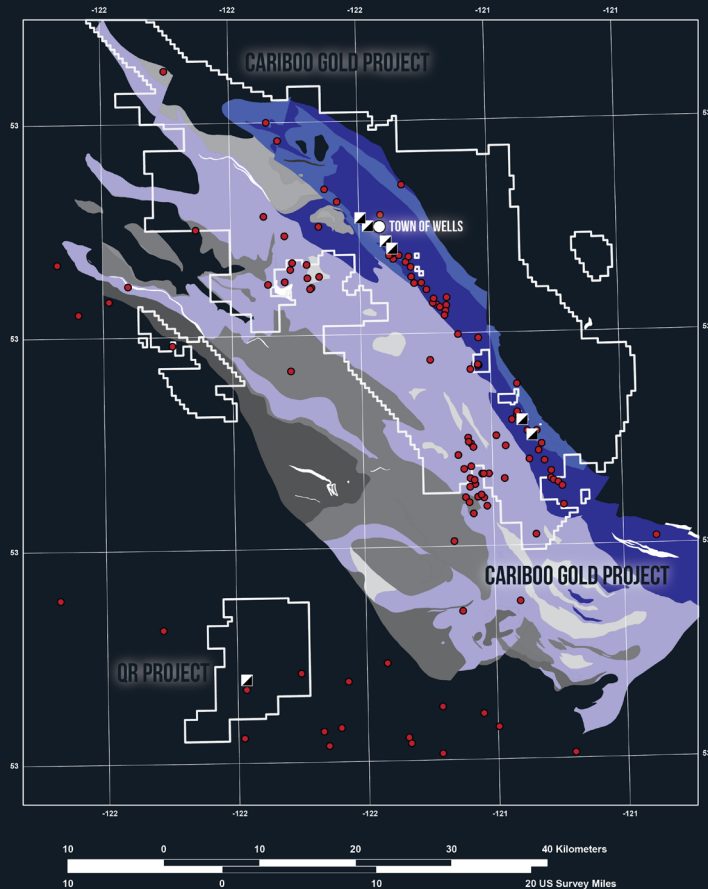


- FIRST PASS 20,000 M DRILL PROGRAM INITIATED
- UNDERGROUND MAPPING AND SAMPLING IN PROGRESS
- HISTORICALLY HIGHEST GRADES IN DISTRICT
- BOTH REPLACEMENT AND VEIN MINERALIZATION



INTERSECTION, RAISE TO
MID-LAKE TUNNEL
ISLAND MOUNTAIN MINE

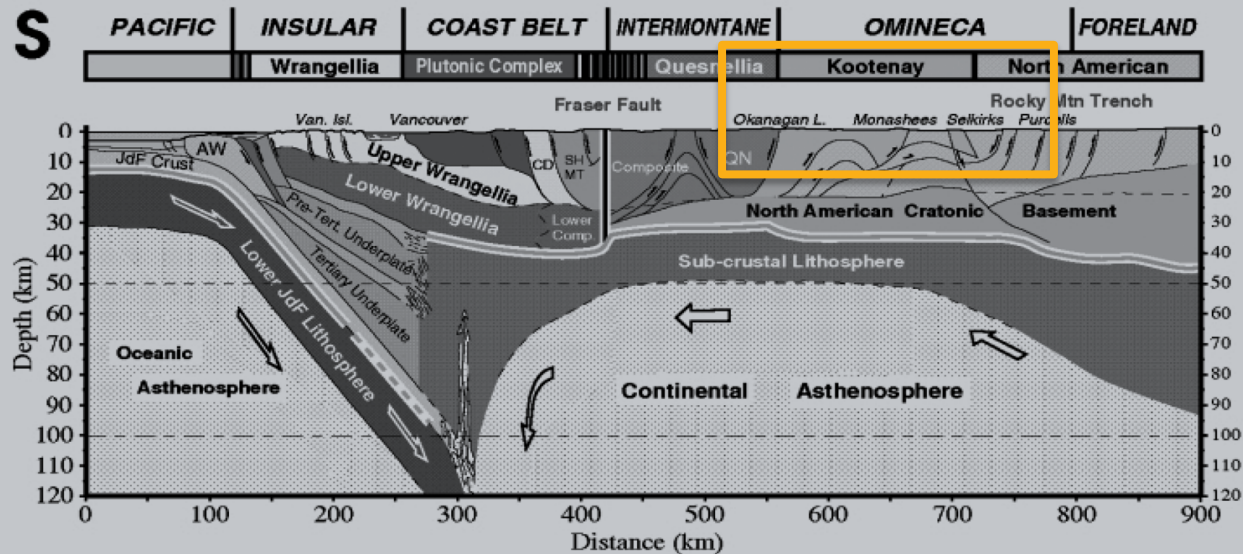
THE NEW ROSETTA STONE



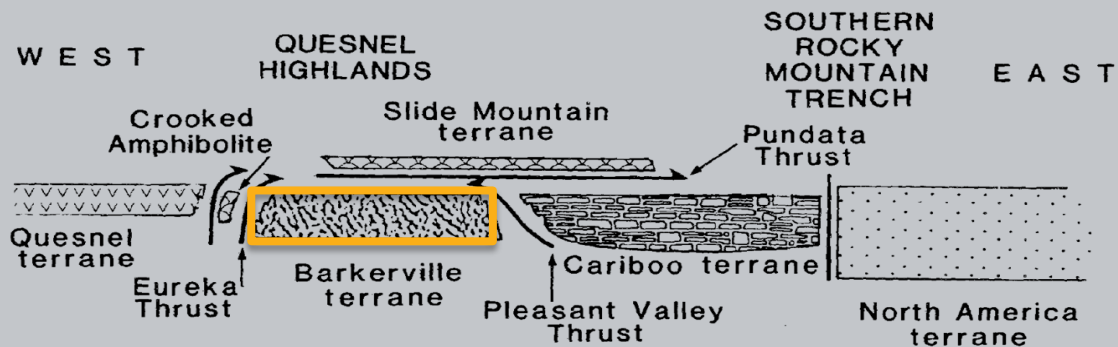
GEOLOGICAL OVERVIEW

TERRY HARBORT
CHIEF GEOSCIENTIST

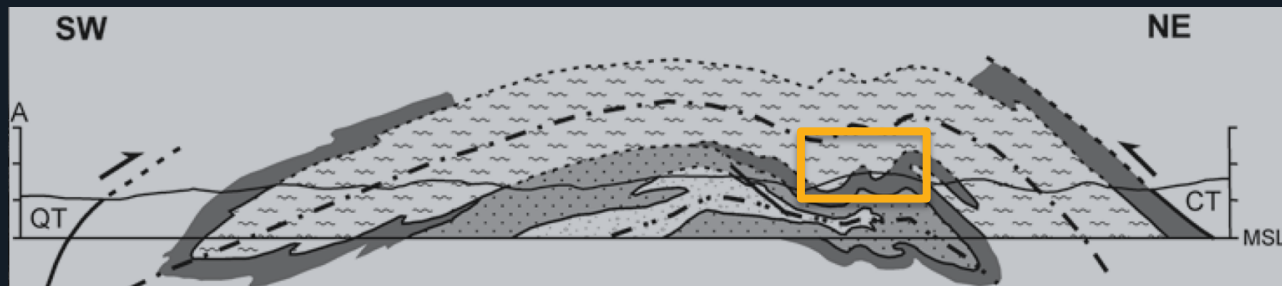
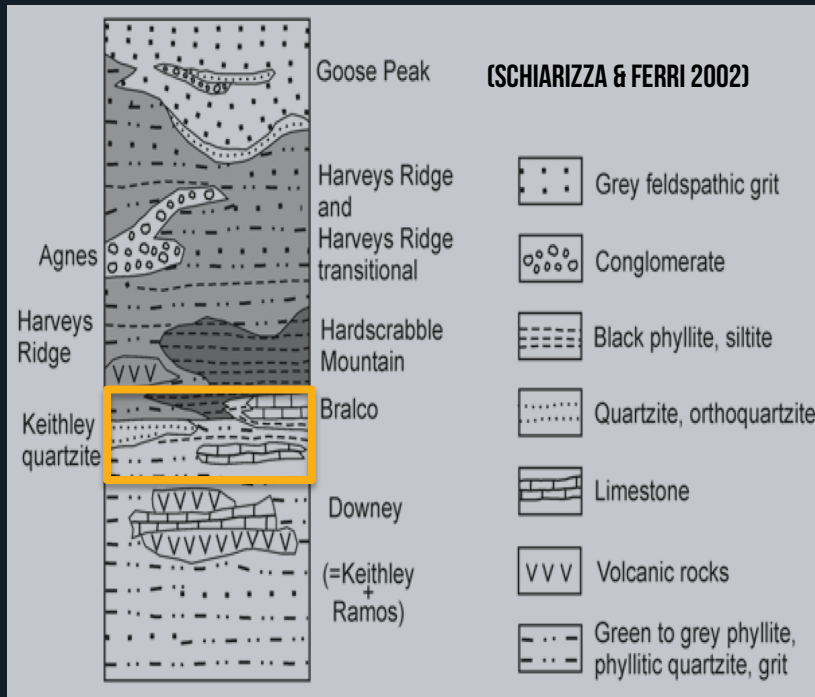
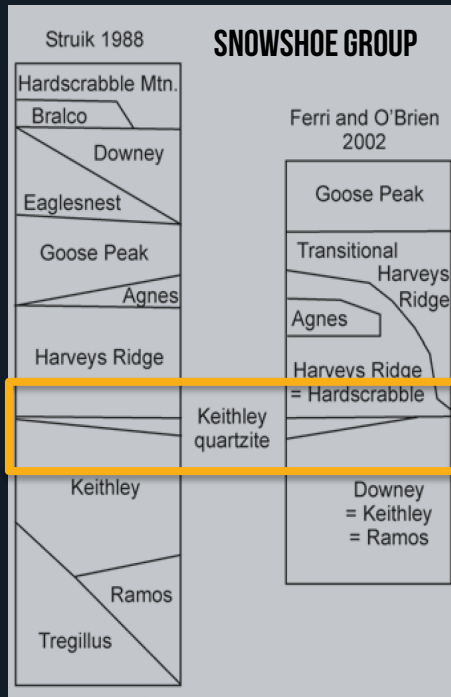
S



BGM
TSX.V: BGM



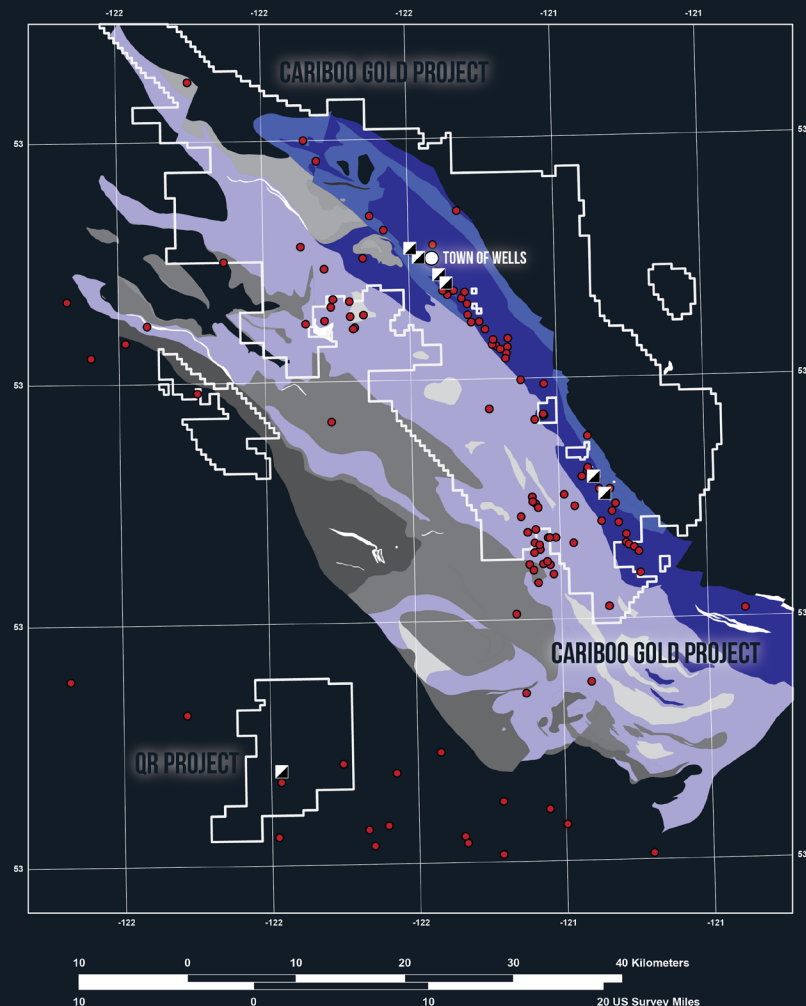
CORDILLERAN
CONTEXT



DEPOSIT SCALE MAPPABLE UNITS

- SANDY MARBLE
- META-SANDSTONE
- META-SILTSTONE
- CALCAREOUS META-SANDSTONE
- CALCAREOUS META-SILTSTONE
- CARBONACEOUS META-SILTSTONE

PERICRATONIC SHALLOW SHELFAL SEQUENCE



OBSERVABLE **ROCK** FABRICS

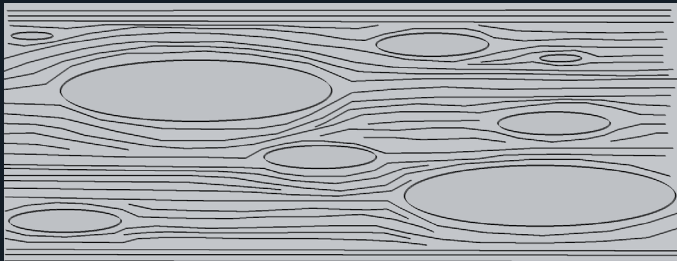
- S0 SEDIMENTARY BEDDING SURFACE
- S1 REGIONALLY PENETRATIVE TRANSPOSITIONAL LAYERING, AXIAL PLANAR TO F1 FOLDING EVENT, FORMS COMPOSITE S0/S1 SURFACE
- S2 REGIONALLY VARIABLE PENETRATIVE CLEAVAGE, AXIAL PLANAR TO ASYMMETRIC F2 FOLDS
- L21 INTERSECTION & MINERAL ELONGATION LINEATION OF S1 AND S2, DOMINANT FABRIC FORMED UNDER STRONG CONSTRICTIONAL STRAIN, RESULT OF ESCAPE TECTONICS
- S3 SPACED CLEAVAGE, AXIAL PLANAR TO OPEN ROUNDED F3 FOLDS
- L32 AND L31, INTERSECTION LINEATIONS S3 AND S2, S3 AND S1
- VP LAYER PARALLEL LENSOIDAL VEINS, WITH LATER BRECCIATION
- VE FLAT TABULAR SHEAR-EXTERNAL EXTENSIONAL VEINS
- VAP VEINS FORM AS RESULT OF OPENING OF S3 SURFACE



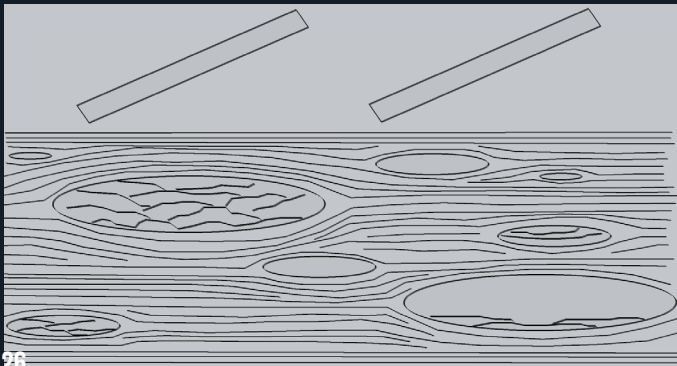
1. PRE-VEIN FORMATION IN CARBONACEOUS SILTSTONE



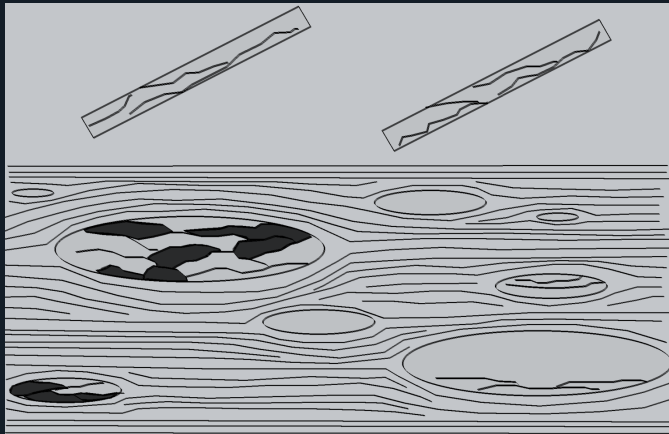
2. DEVELOPMENT OF LAYER PARALLEL QTZ LENSES



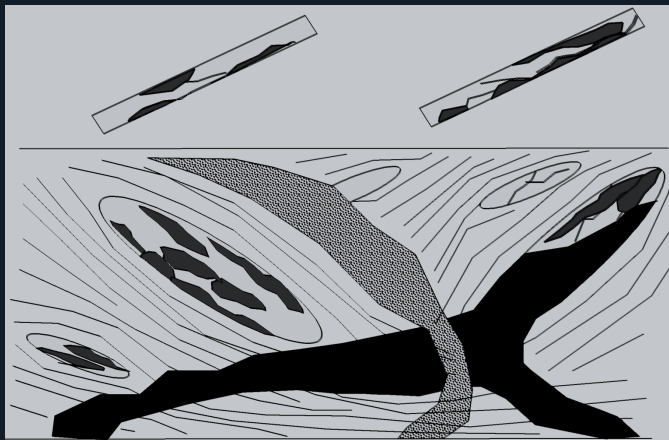
3. LENS FRACTURE & EXTENSIONAL VEIN DEVELOPMENT



4. MINERALIZATION & ALTERATION IN CRACKS

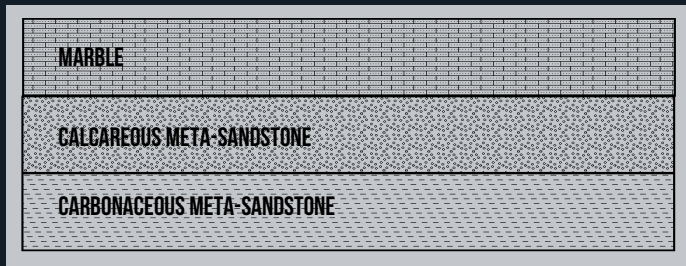


5. DUCTILE BRECCIATION, CONTINUED MINERALISATION

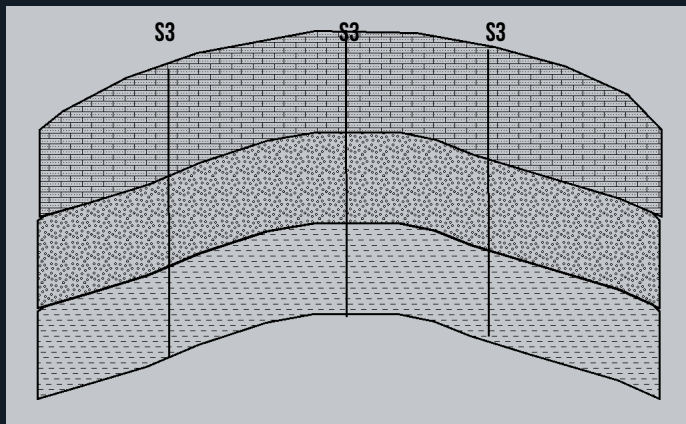


VAP GEOMETRIC CONTROLS

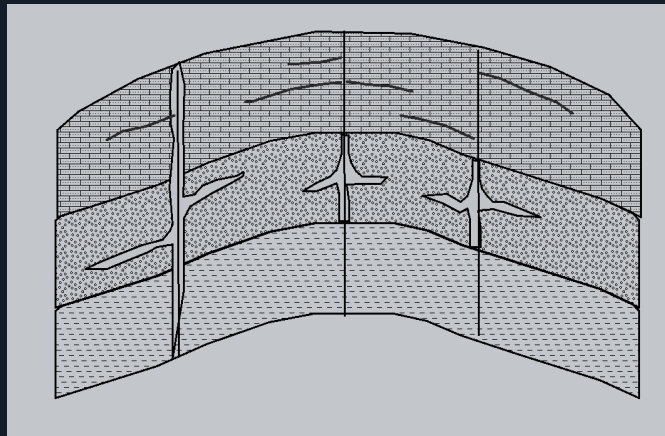
1. PRE-VEIN FORMATION AND F3 FOLDING



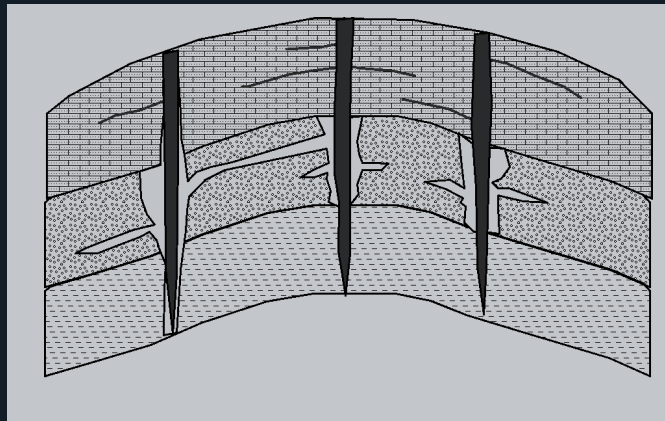
2. F3 FOLDING AND S3 FORMATION AXIAL PLANAR



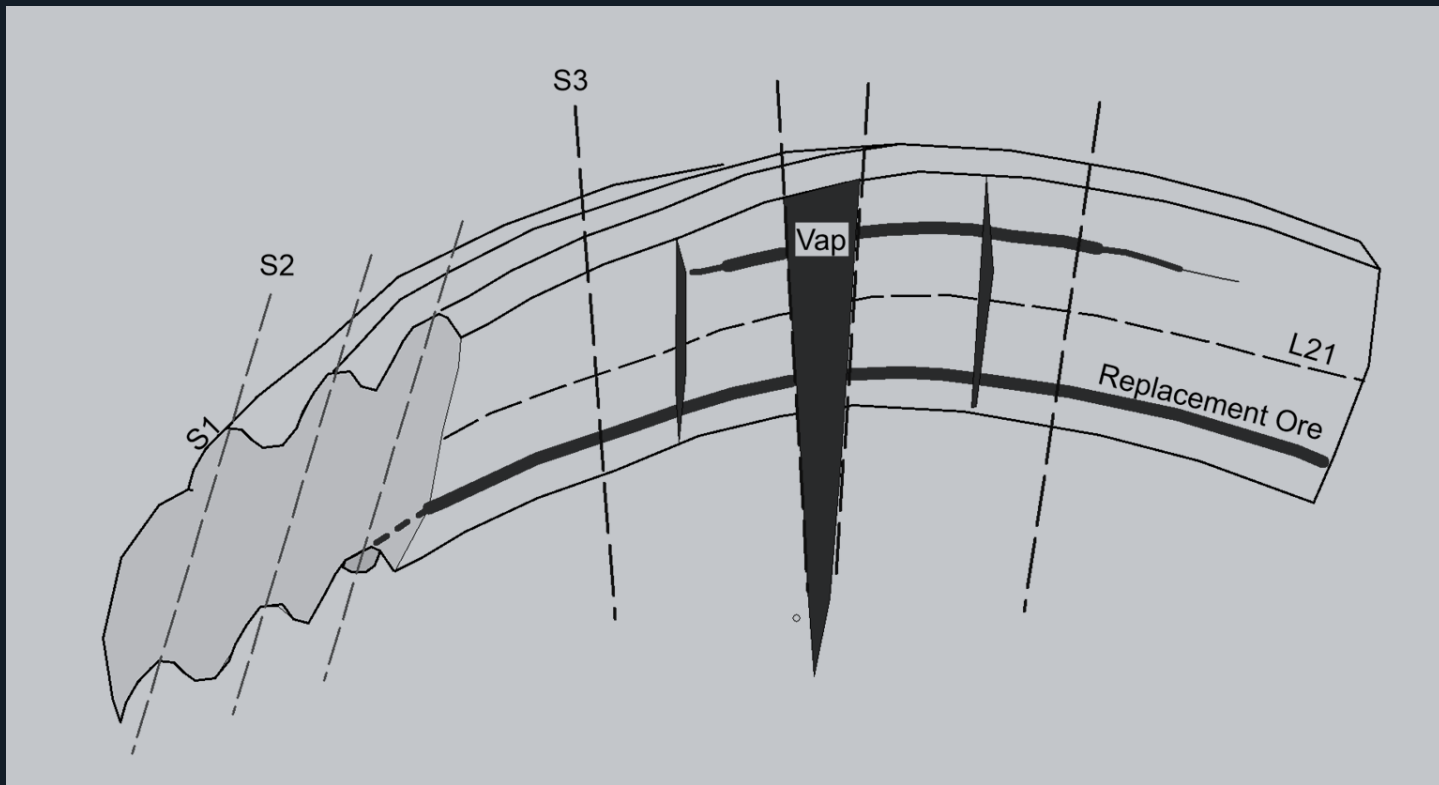
3. MIGRATION OF FLUIDS ALONG S3, PY REPLACEMENT



4. CONTINUED F3 FLEXURE, OPENING OF S3, FORMATION OF VAP



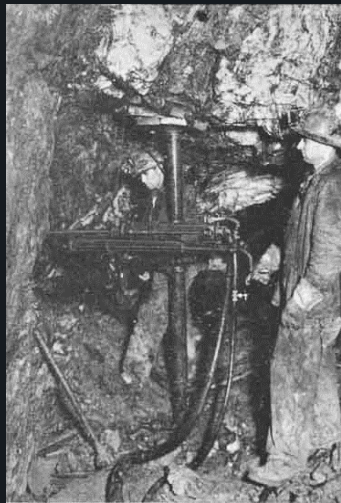
VAP GEOMETRIC CONTROLS



OPERATIONS OVERVIEW

FRANCOIS VEZINA, P.ENG
OPERATIONS MANAGER

OPERATIONAL OBJECTIVES



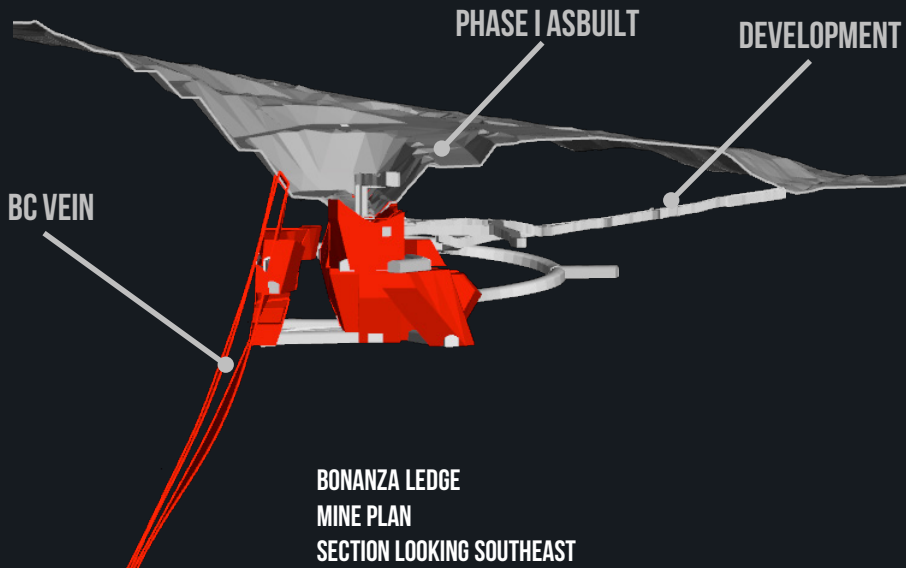
UNDERGROUND IN A WELLS AREA MINE
UNKNOWN DRILLER

- **COMPLETE A FEASIBILITY BASED ON NEW RESOURCES FROM COW, ISLAND AND BARKERVILLE MOUNTAINS BY END OF 2018 THAT JUSTIFIES AN ON SITE MILLING FACILITY**
- **MAINTAIN PRODUCTION FROM QR MILL AT A MINIMUM A 150,000 TPA (30,000 OZ AU) FROM 2017 TO 2021**
- **WORK WITH EXPLORATION TEAM AND PRIORITIZE NEW TARGETS FOR FOLLOW UP**

Cariboo Gold Project	2016				2017				2018				2019				2020			
	Q1	Q2	Q3	Q4	Q1	Q2	Q3	Q4	Q1	Q2	Q3	Q4	Q1	Q2	Q3	Q4	Q1	Q2	Q3	Q4
Cow Mountain																				
Exploration																				
Environmental Baseline Studies																				
Permitting																				
Feasibility Study																				
Detailed Engineering																				
Construction																				
Pre-Production																				
Production																				
Ore Sorter																				
Economical Analysis																				
Detailed Engineering																				
Site Preparation																				
Production																				
Bonanza Ledge																				
Exploration																				
Permit Amendment																				
Site & QR Mill Preparation																				
Pre-production																				
Production																				
BC Veins & Others																				
Exploration																				
Permitting																				
Mine Development																				
Pre-production																				
Production																				
Island Mountain Gold																				
Exploration																				
Environmental Baseline Studies																				
Permitting																				
Feasibility Study																				
Detailed Engineering																				
Construction																				
Pre-Production																				
Production																				

**OPERATIONAL
TIMELINE**

BONANZA LEDGE REVIEW



UNDERGROUND MINING APPROACH

- 270,000T AT ~7.0 G/T AU
- LONG HOLE MINING METHOD (BLOCKS OF 25X8X10M)
- MINE DEVELOPMENT (420M OF RAMP AND 900M OF DRIFT)

ADVANTAGES OF UNDERGROUND

- IMPROVE CASH FLOW COMPARED TO OP (+30%)
- NO PAG GENERATION (CRF FOR BACKFILL)
- GIVES ACCESS TO UG EXPLORATION OF BCV
- REDUCED FOOT PRINT
- LOW VISUAL IMPACT
- FLEXIBILITY IN PRODUCTION

CHALLENGES

- CONFIRMATION OF NEW PERMIT (PAG, WATER MANAGEMENT, CLOSURE PLAN)
- ORIGINAL DATA NOT VALID OR LACKING (ENVIRONMENT, SURVEYING, VOLUMES AND TONNAGES)
- TONNAGE LIMIT AT 75,000 TPA (PRODUCTIVITY FOR MILL AND MINE ARE POSSIBLE TO 240,000 TPY)
- NEW BC REQUIREMENTS FOR PERMITTING
- OLD BGM IMAGE WITH MEM AND MOE

BONANZA LEDGE SCHEDULING

Q1 2016

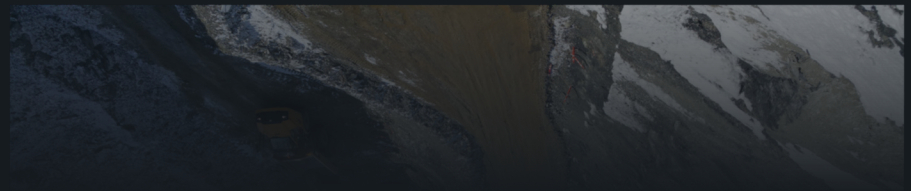
- REVIEW AND UPDATE RESOURCES - **COMPLETE**
- MINE PLAN FOR THE BONANZA LEDGE - **COMPLETE**
- PREPARE BUDGET FOR OPERATION AND FEASIBILITY - **COMPLETE**

Q2 2016

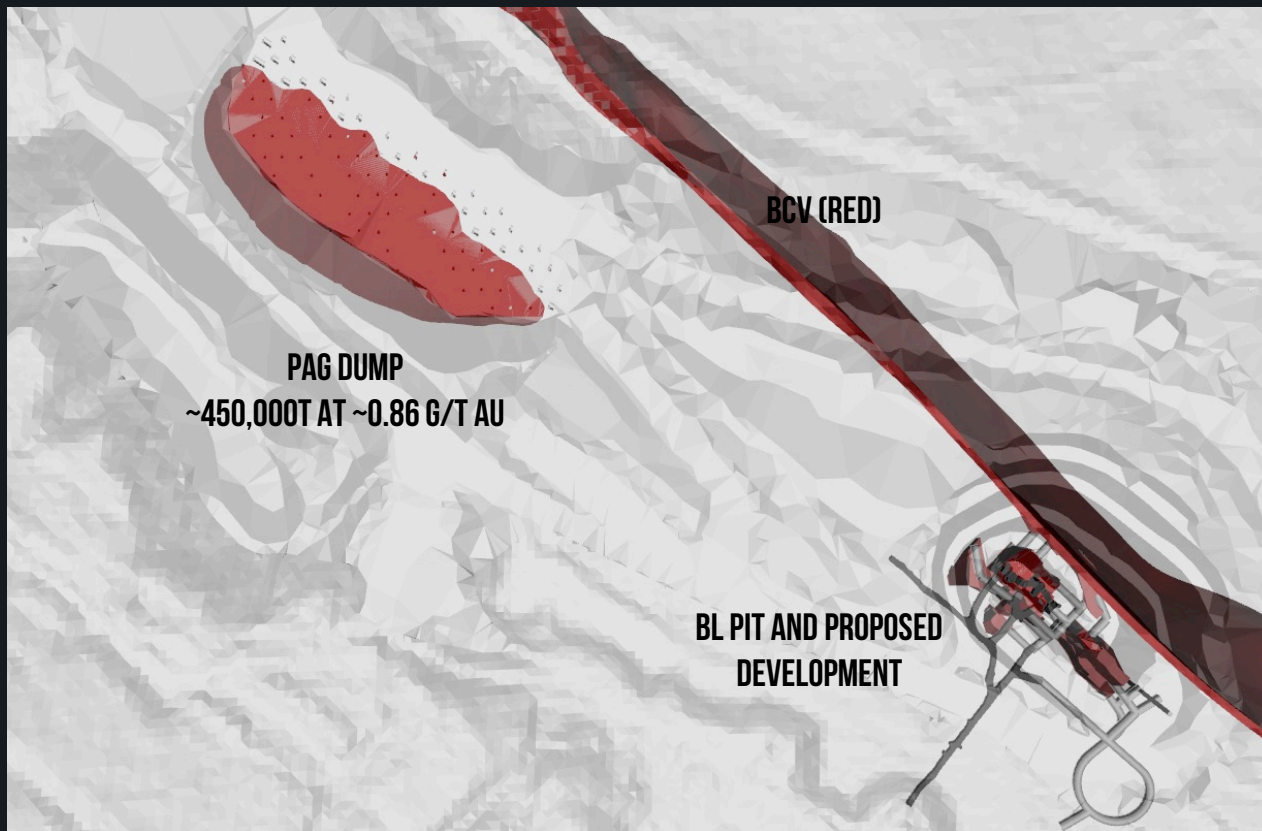
- SELECT CONTRACTOR FOR BONANZA LEDGE - **COMPLETE**
- BONANZA LEDGE SITE PREPARATION - **COMPLETE**
- SEND PERMIT AMENDMENT - **COMPLETE**
- START QR MILL PREPARATION - **ON SCHEDULE**
- START HIRING OPERATION PERSONNEL - **ON SCHEDULE**

Q3 2016

- BONANZA LEDGE SITE PREPARATION - **COMPLETE**
- FINALIZE ORE SORTER ENGINEERING - **ON SCHEDULE**
- MOBILIZE MINE CONTRACTOR - **ON SCHEDULE**



**BONANZA LEDGE OPEN CUT
FINAL PHASE I BENCH
FEBRUARY 2015**



A NEW ADVANTAGE:

- ORE SORTING TEST POSITIVE
- ESTIMATING SORTER WILL GENERATE ~25,000T AT ~3.5 G/T

SEVERAL OPPORTUNITIES:

- REDUCTION OF PAG LIABILITY
- IMPROVE GRADE OF BONANZA LEDGE
- UPGRADE OF SUBECONOMIC GRADE MATERIAL TO ECONOMIC
- EARLY OPERATION OF MILL



BGM

TSX.V: BGM

ENVIRONMENTAL AND SUSTAINABILITY

CHRIS PHARNESS

VICE PRESIDENT — ENVIRONMENT AND SUSTAINABILITY

BONANZA LEDGE MINES ACT PERMIT AMENDMENT

- JOINT APPLICATION BC MEM (M-238) & BC MOE (PE-17876)
- 74,000 T/YR TO 150,000 T/YR
- OPEN PIT TO UNDERGROUND
- RECLAMATION AND CLOSURE PLANS
- QR PERMIT UPDATES



RECLAMATION AND CLOSURE

- LEGACY ISSUES
- QUESNEL RIVER MINE
- MOSQUITO CREEK MINE
- ORE SORTING



COMMUNITY OF WELLS

COMMUNITY INITIATIVES

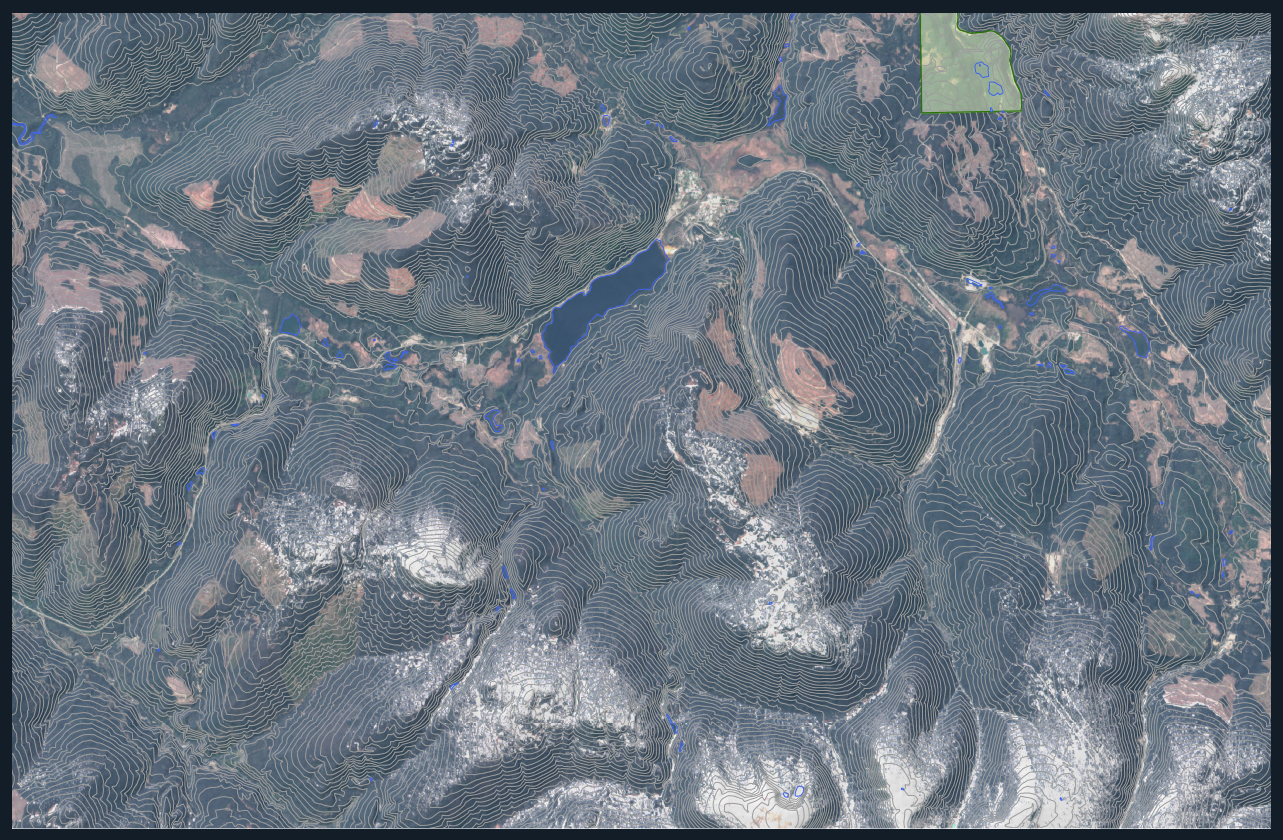
DONATIONS INCLUDE:

- ISLAND MOUNTAIN ARTS
- HUCKLEBERRY DAYCARE
- DISTRICT OF WELLS CLINIC
- INFRASTRUCTURE
- GOLD QUARTZ HEAD FRAME



CARIBOO GOLD PROJECT ENVIRONMENTAL ASSESSMENT

- BASELINE ENVIRONMENTAL AND ENGINEERING STUDIES
- PROPOSED MILL AND TAILINGS STORAGE SITES



SUMMARY

CHRIS LODDER
PRESIDENT AND CEO

SUMMARY



HORSE RACE TRACK ON THE MEADOW, WELLS BC.

© SHIRLEY BROWN AND MRS. FREW

~1935

- EXPERIENCED LEADERSHIP
- FINANCIALLY AND TECHNICALLY SUPPORTIVE MAJOR SHAREHOLDERS BASE
- SUSTAINABLE - LOW IMPACT — HIGH MARGIN MINING
- STRONG SOCIO ECONOMIC BENEFITS
- FOCUSED & DISCIPLINED EXPLORATION ON HIGH QUALITY TARGETS

“TRACK THE JOCKEY, BUT WATCH THE HORSE...”

BGM

TSX.V: BGM

BARKERVILLE GOLD MINES

INVESTOR PRESENTATION SEPTEMBER 2016

CHRIS LODDER

PRESIDENT AND CEO

+1 416 388 1670

CLODDER@BARKERVILLEGOLD.COM

