

**NELS VOLLO, M.Sc., P.Eng.**  
**GEOLOGIST**

(604) 374-4359  
372-7688

1854 Russet Wynd  
Kamloops, B.C.  
V2C 4N5

Nov. 4th, 1983

Mr. A.F. Reeve,  
Barrier Reef Resources Ltd.  
904-675 West Hastings St.  
VANCOUVER, B.C.

680311  
82M/4E  
Tunnel

Dear Bert:

As per our telephone conversation today, I enclose photocopies showing the relationship of the Apex Energy Corporation geochemical anomalies to the recent Rea Gold discovery. The "Tunnel" area appears to be a barite-sulfide horizon in Fennell basalts. Main area of present interest would be on the rhyolite-basalt contact on the Twin-3 claim.

best regards

  
Nels Vollo

P.S. - the "tunnel" area zone dips into a ridge but could still be drilled.

staked

Stated



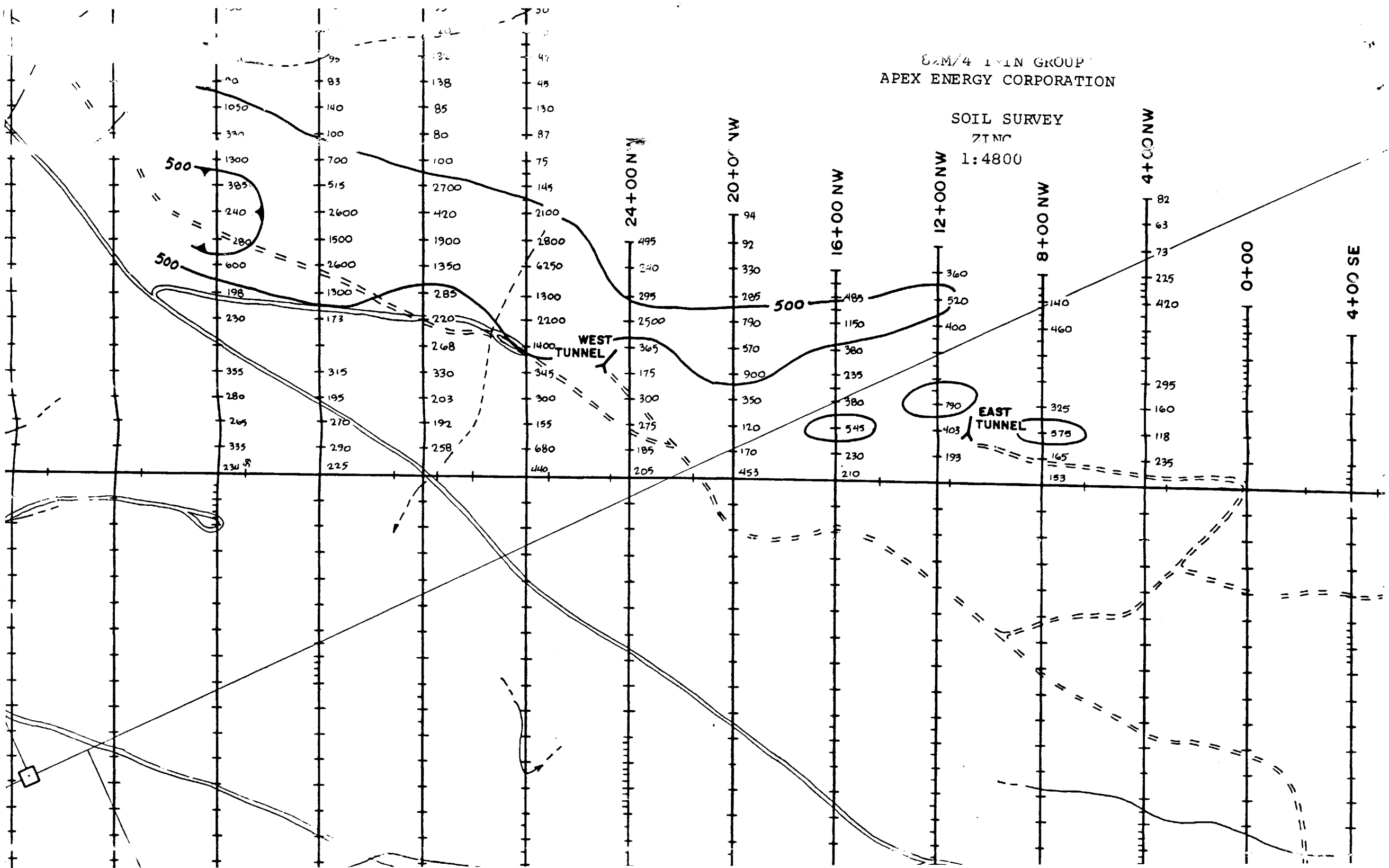
Figure 2 Claim Map and Location of Mineral Occurrences

1: 50,000

Austin

82M/4 MAIN GROUP  
APEX ENERGY CORPORATION

SOIL SURVEY  
ZINC  
1:4800





82M/4 TWIN GROUP  
APEX ENERGY CORPORATION

GEOLOGY

1:4800

Shaded: areas of rhyolitic outcrop

TWIN 2

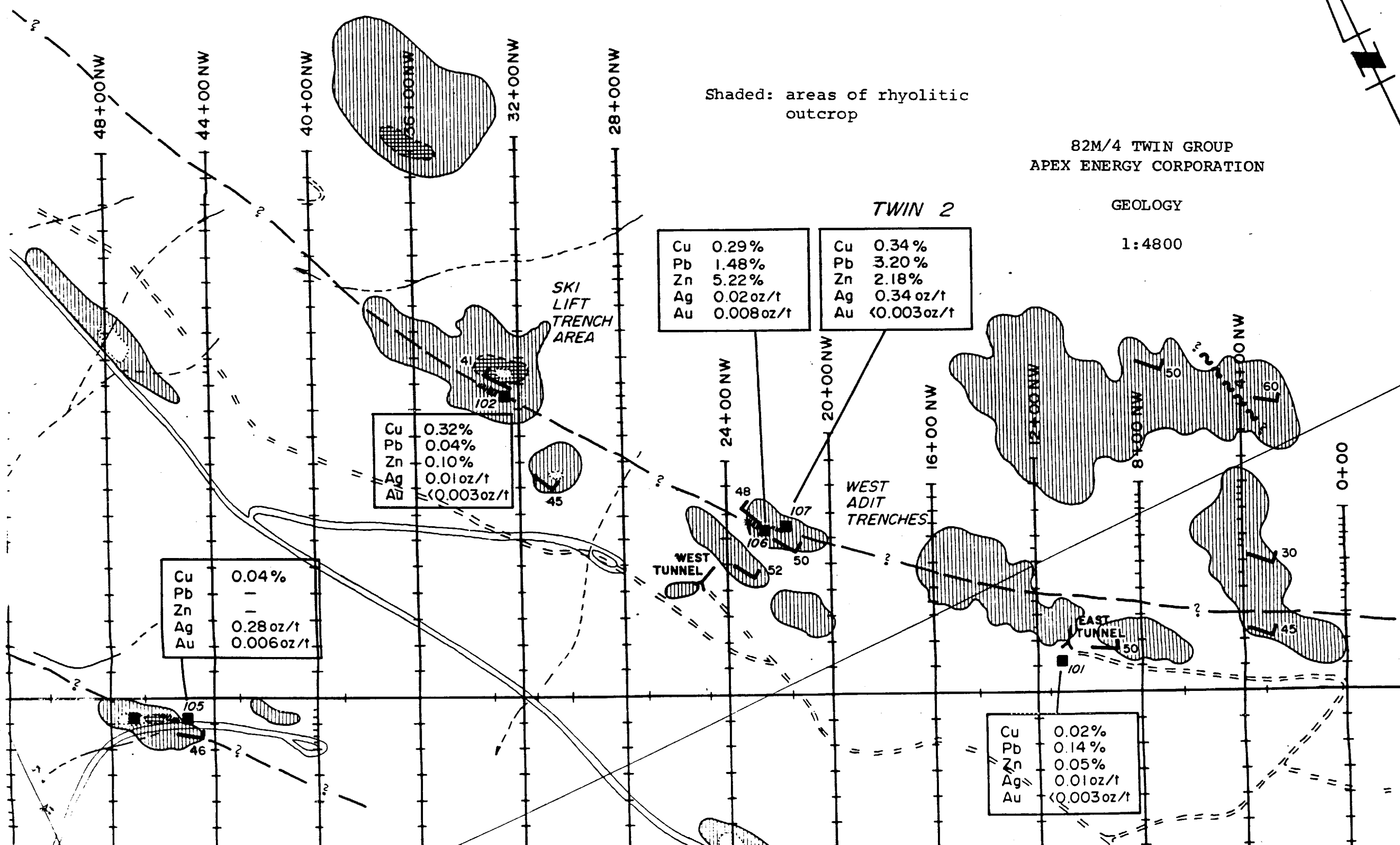
Cu	0.29%
Pb	1.48%
Zn	5.22%
Ag	0.02 oz/t
Au	0.008 oz/t

Cu	0.34%
Pb	3.20%
Zn	2.18%
Ag	0.34 oz/t
Au	<0.003 oz/t

Cu	0.32%
Pb	0.04%
Zn	0.10%
Ag	0.01 oz/t
Au	<0.003 oz/t

Cu	0.04%
Pb	-
Zn	-
Ag	0.28 oz/t
Au	0.006 oz/t

Cu	0.02%
Pb	0.14%
Zn	0.05%
Ag	0.01 oz/t
Au	<0.003 oz/t



SKI LIFT TRENCH AREA

WEST ADIT TRENCHES

WEST TUNNEL

EAST TUNNEL

48+00NW

44+00NW

40+00NW

36+00NW

32+00NW

28+00NW

24+00NW

20+00NW

16+00NW

12+00NW

8+00NW

4+00NW

0+00