

MEMO from

R. SOMERVILLE

675951

Erikson Gold

104P/4

Ken Dawson

I have enclosed
a sample just given to
me on Friday from the
line #4 vein on the
Cusac property which
I think has some galena.

Also enclosed is a
galena sample from the
Bad Bear claim on
Mc Dame Creek near

over ↘

Centerville. This
property is listed in
MMAR - 1965 P 14

as M^c Dame Belle.

The deposit is in a
skarn zone in the
Atan carbonates

I'll be interested
to hear the results

Rief

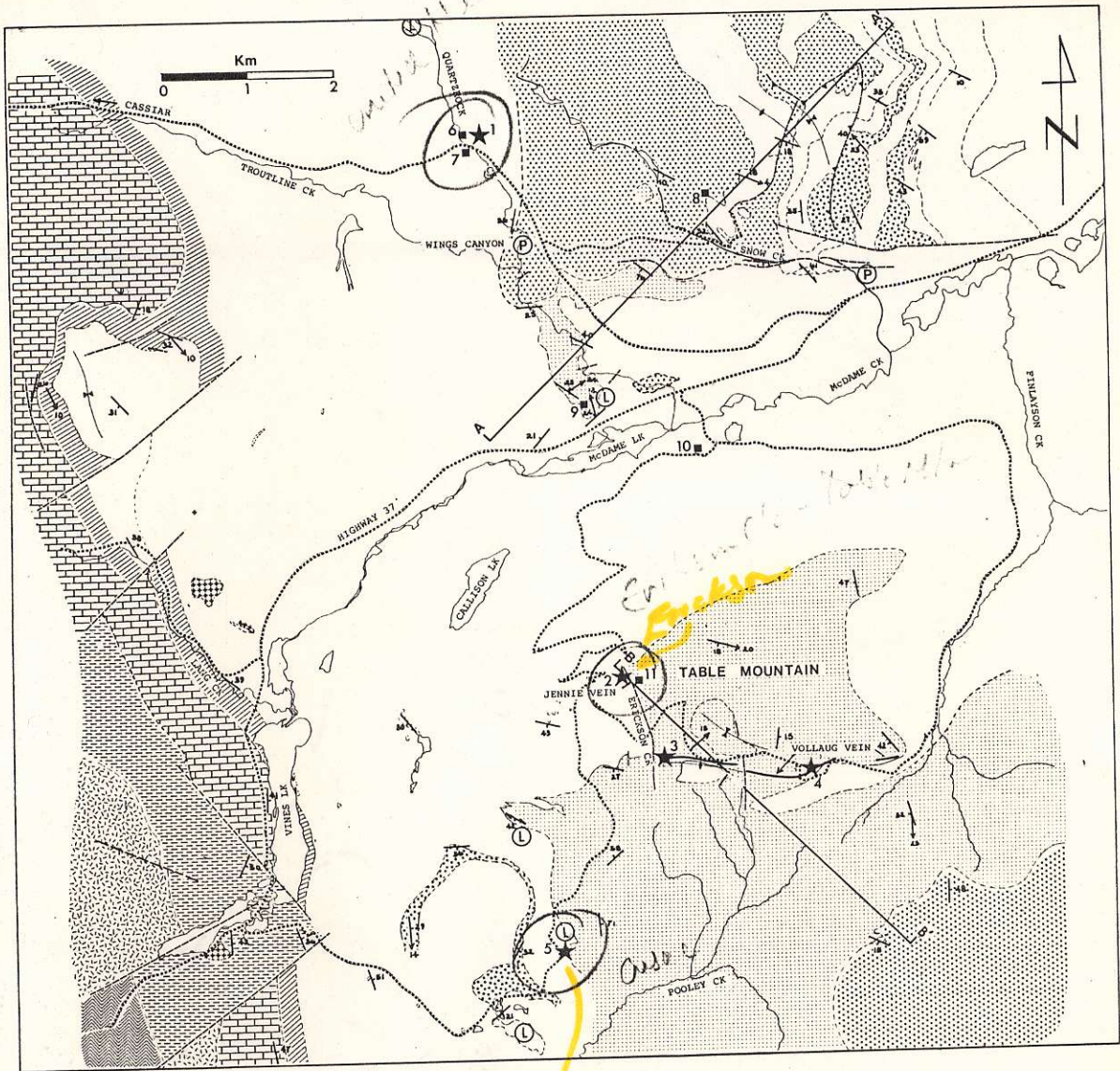


Figure 18. Geology of the McDame map-area.

Cusae.

DY 2544 2/12/82
ph isotope analysis of Zn Cu Pb
ven.

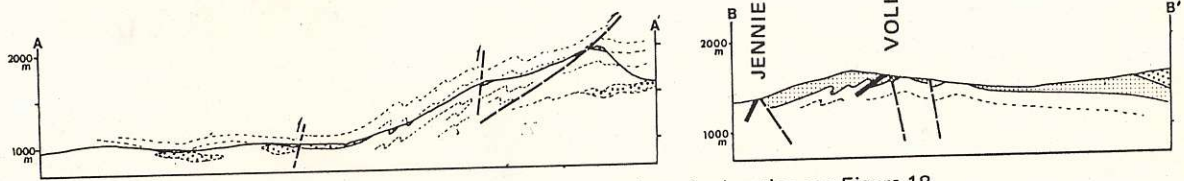
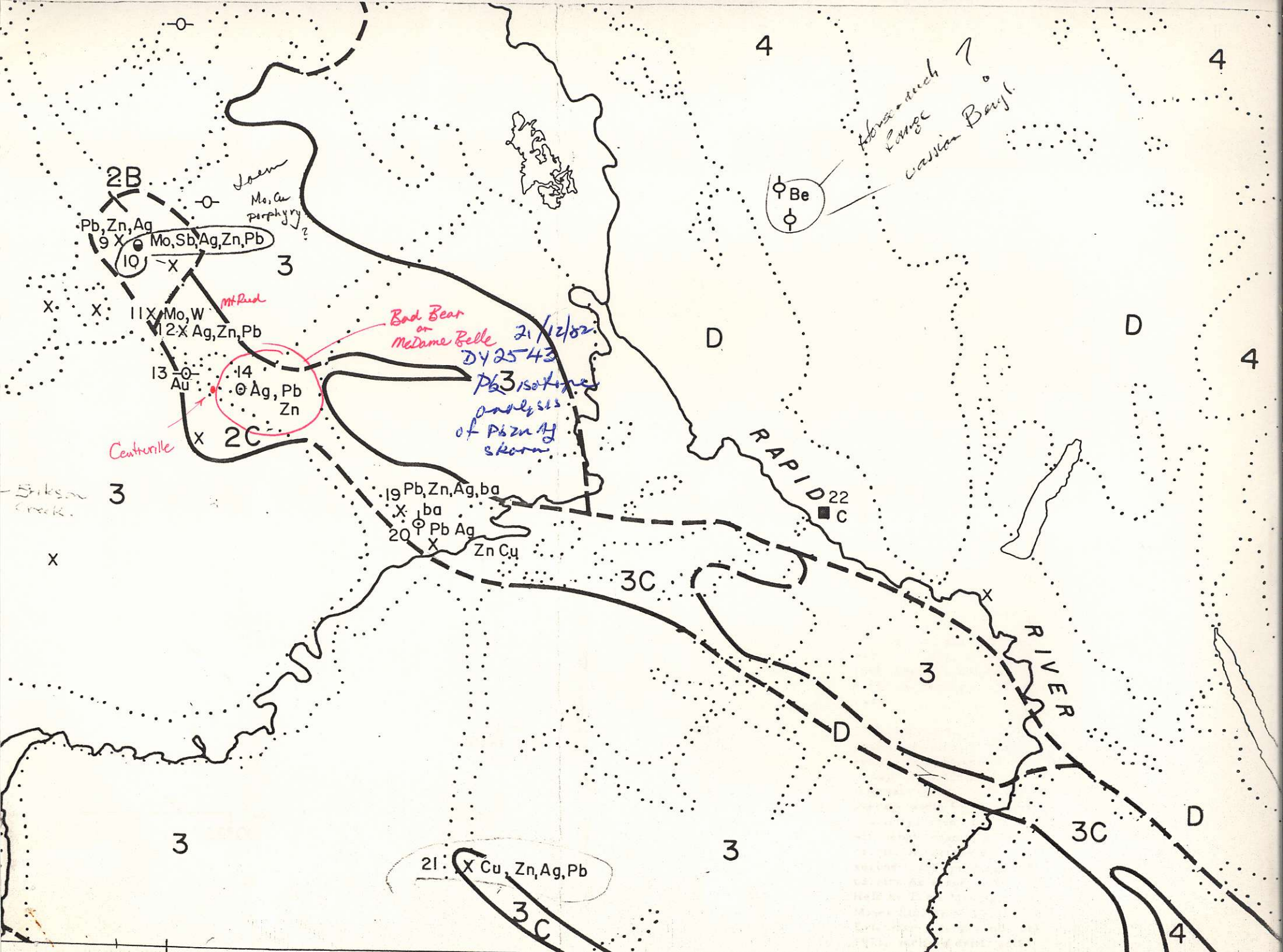


Figure 19. McDame map-area, cross-sections; for location see Figure 18.



No. 17 hole averaged 1.39%
Sb, 1.21 oz./ton Ag, 0.35%
Pb, 0.5% Zn over 60' core
length.

Several areas of skarn GEM 1970 p. 35
with molybdenite, scheelite
and magnetite. North
side skarn samples suggest
grades of 0.2% MoS₂, 0.16%
WO₃. Total of 5598'
drilling 1956 and 1970.

\
Shear zone 10 to 20' wide GSC Mem. 319 pp. 114-116
at quartzite-limestone
contact in Atan Group
mineralized with sphalerite,
galena, pyrite.

Since discovery in 1874, at MMAR 1931 pp. 54-61;
least 64,117 oz. Au 1949 pp. 236-237;
recovered by 1945. GEM 1969 p. 41

Dolomitized limestone of GSC Mem. 319 p. 114;
Atan Group contains galena, MMAR 1965 pp. 14-15
sphalerite, chalcopryite,
scheelite, hydrozincite.
Picked shipment of 750 lbs.
contained 60 oz. /ton Ag, 1964.

"Vein" of sulphides 3' MMAR 1967 p. 26;
wide conformable with 1961 p. 7
bedding in argillaceous
limestone wall rock.
(Drilling 1961, 1967
totalled 4,351' but may
have been on claims to
north and south.)

Fracture fillings and GEM 1969 p. 41
disseminations in a latite
(monzonite) stock with
molybdenite, chalcopryite.
Adit 2,905' long driven in
1968, 1969; 1,500' drilling
1969. No record of subsequent
work.

Ribboned quartz vein at GEM 1970 p. 36;
contact of volcanics and GSC Mem. 319 pp. 116-117
sediments in Sylvester MMAR 1937 pp. B24-34
Group. Exposed at
intervals along 7,000' with
average width 5'. Two ore
shoots reported: one of
450' length grading 0.72
oz./ton Au across 4.7';
second 1,200' grading 0.68
oz. /ton Au across 4.6'.
Held by Table Mountain
Mines Ltd. since 1953.
Extensive underground work
1973; inclined drift, adit,
drifts.