

Ayar W
Kukas map

Afton -
Preto³³
92I/9



675713

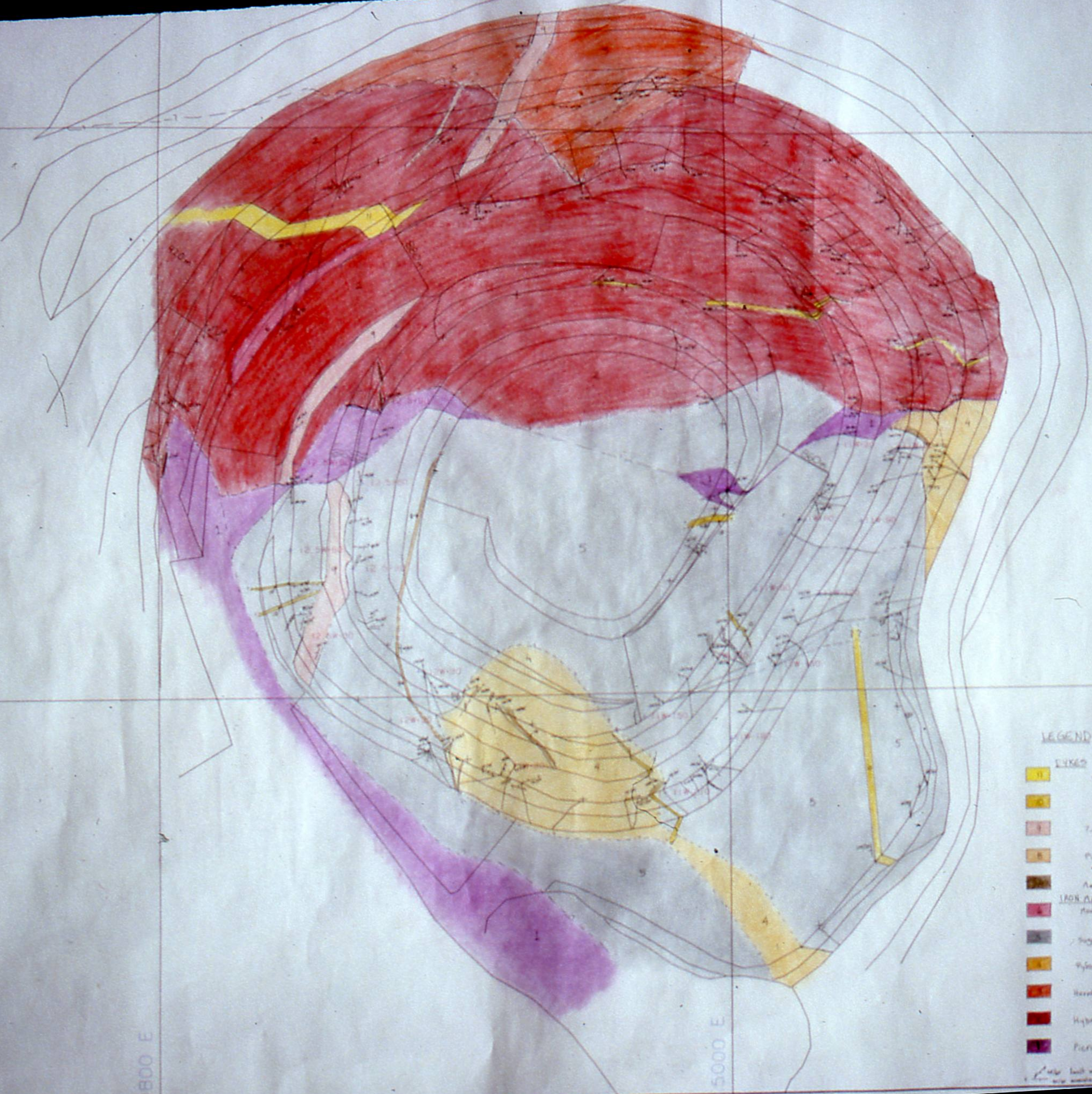
4800 N

4600 N

4800 E

5000 E

5200 E



LEGEND

- EXPOS**
 - Quartzite like porphyry dikes
 - Diorite dikes - fine to medium grained, mineralized
 - ? Cherry Creek? Monzonite dike, fine grained
 - Plagioclase porphyritic dikes
 - Anorthic vein dikes
- IRON ORE BATHOLITH**
 - Monzonite? - finer matrix, elongated porphyroclasts, pyroxene phenocrysts
 - Sugar loaf Diorite - fine to medium grained porphyritic, also large porphyroclasts, hornblende, quartz
 - Pyroxene Gabbro - fine to medium grained porphyritic, pyroxene, hornblende, plagioclase in dark grey/black matrix
 - Hornblende Gabbro - medium to coarse grained, hornblende, plagioclase, quartz and quartzite
 - Hybrid Diorite - fine grained to porphyritic, upper hornblende, matrix
 - Piorite - strongly magnetic, serpentinized, siliceous dikes

DATE: August 1968

DRAWN BY: K. Russ

AJAX WEST PIT

AFTON OPERATING CORPORATION

GEOLOGY POINTS

860-880 BENCH

SCALE 1:500

SCALE 1:500

860-880 BENCH

860-880 BENCH

860-880 BENCH

size of fault on scale
Value