

J & L stratiform Pb Zn Ag Au As

MEG talk March 21/84

Brian Grant Selco-BP

(Marc Reboylati in charge)

Sulfides: interfingered laminae in Hamill qtz (eoc)

(Below Goldstream horizon)

1.9 km long, underground workings trace for 530m (on surface)

Thickness 2m

Assays avg: 3.5% Zn, 1.5% Pb, 67gm Ag, 5gm Au, 4.3% As

First staked 1895

Ranger Gold developed in 1930's.

Westairs worked deposit in 1960's, found As too high for economic mining.

1980 picked up by Pan Am Energy and Selco-BP

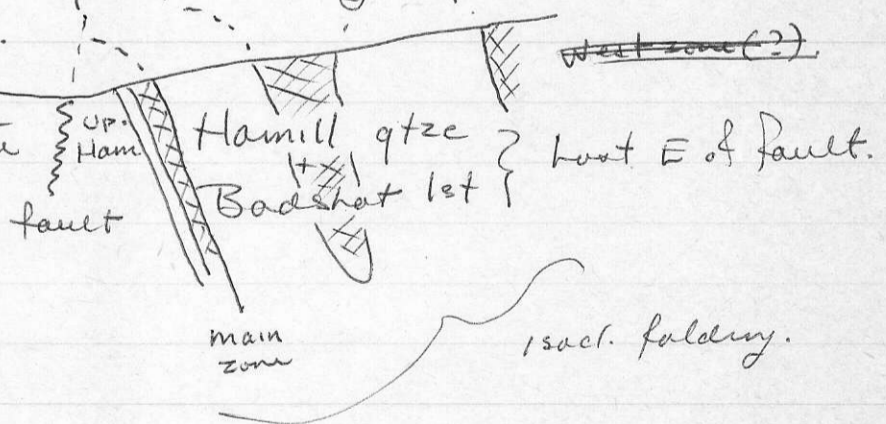
1981 mapping sampling geophys.

Location 21 miles N of Revelstake

in Carnes Ck area, Goat Mtn.

Near Mastodon property containing 40,000+ PbZn ore on several horizons.

harder graphitic phyllite on west



Mohican

Badshot dolomitic gnt

Hamill

Hamill isoclinally folded, poor outcrop. Limestone forms footwall to ore horizon, graphitic, contains minor sulfide laminae - low grade Zn values.

Many other sulfide showings in 1st unit

Sed. cycle evident qtz ^{upto} chlorite schist → sulfides → qtz

Al₂O₃ decreases upwards in qtz, SiO₂ increases up.

West zone is rich in AS, no Au Ag PbZn

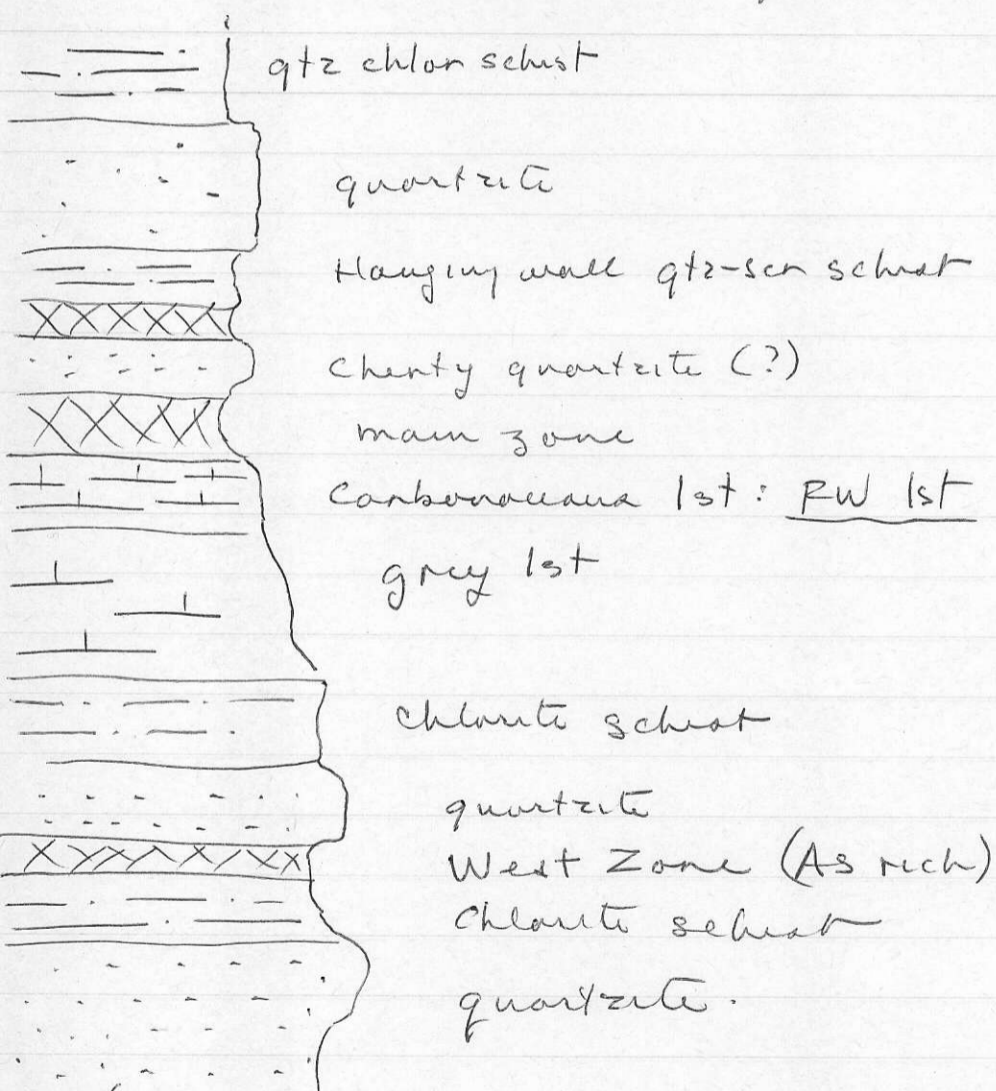
Main zone upwards: $qtz \rightarrow chl. schist \rightarrow grey \text{ l.s.} \rightarrow \text{black carbon.}$
l.s. (anom. Sb, ZnS, diss FeAsS)

$CaCO_3$ 'injection' in carbonaceous l.s. (pillars, ^(?) press. sol'n struct) _{KMD}

Main zone sulfidation interfingered over 2 to 6 horizons, interbedded with 'cherty quartzite' (exhalite? _{KMD}) plus pyrite, arsenopyrite.

Pyrite is fragmental in py-arspy-sphal assembl.

Qtz-ser-schist alteration zone overlies sulfidation in HW, plus Zn, As anomaly.



(Query - is this true strat. section or structural repeats? _{KMD})

Reidspor porphyry dike cut R.W. l.s. only.
 No dates yet.

Fabric appears to be mainly tectonic (_{KMD}).

h^JU>-cM_, **^^Q^k^** **^A^y^Jut^** **^>N>**

^^JiA^^^r^

^ZK^J^

\fo^Jlo-tAJ-C~

Qj^^&^i^^