

CIM Van Apr 85

VMS at Tulsequah; Joanne Nelson
John Payne

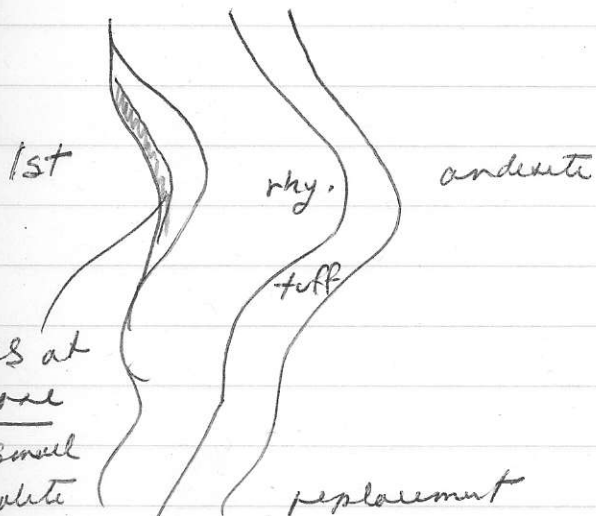
Age range late Dev - Perm

mid Perm fusulinids found on Mt Baton near Tulsequah
Chief.

mainly andesite, mPz Stikine or Taku (?) thin
mantle by VFR Stikine andesite / dacite / tuff / lst / sh / gyl
+ VFR Sinwa lst, eJ Laberge Gp turbidites.

Tiny rhyolite bodies with MS. Not like Kurako
Sed basins developed on volc edifices.

Blackton Abby has limestone / chert host rock
Several small individual deposits



One Black-Abby 30' section
 now 17 oz Ag, 30% Zn
 avg 4oz/t Ag 0.1oz/t Au
 of } Pb 2% ; Zn 5%
 3 ore bodies

MS at base of small rhyolite body + Mn-rich 'skarn', rhodochrosite in chert breccia near vent