

671968

924/15

BC 2883 + 106

① Volcanic Agglomerate. Agglomerate, particle size generally less than 1". Matrix light gray, feldspathic, of andesitic tuff composition and texture. Weathers to rust coloured, pebbly, and hence mottled surface. Some mafics from pebbles have produced pyrite in segregated grains within the rock.

MINE ASR LOCATION West Kentucky Lake LEVEL \_\_\_\_\_  
 GEOLOGY BY RL SURVEY Photo Traverse SCALE \_\_\_\_\_ DATE July 17, 1962

B.C. GOVERNMENT AIR PHOTOGRAPH  
All Rights Reserved

Date of Exposure:

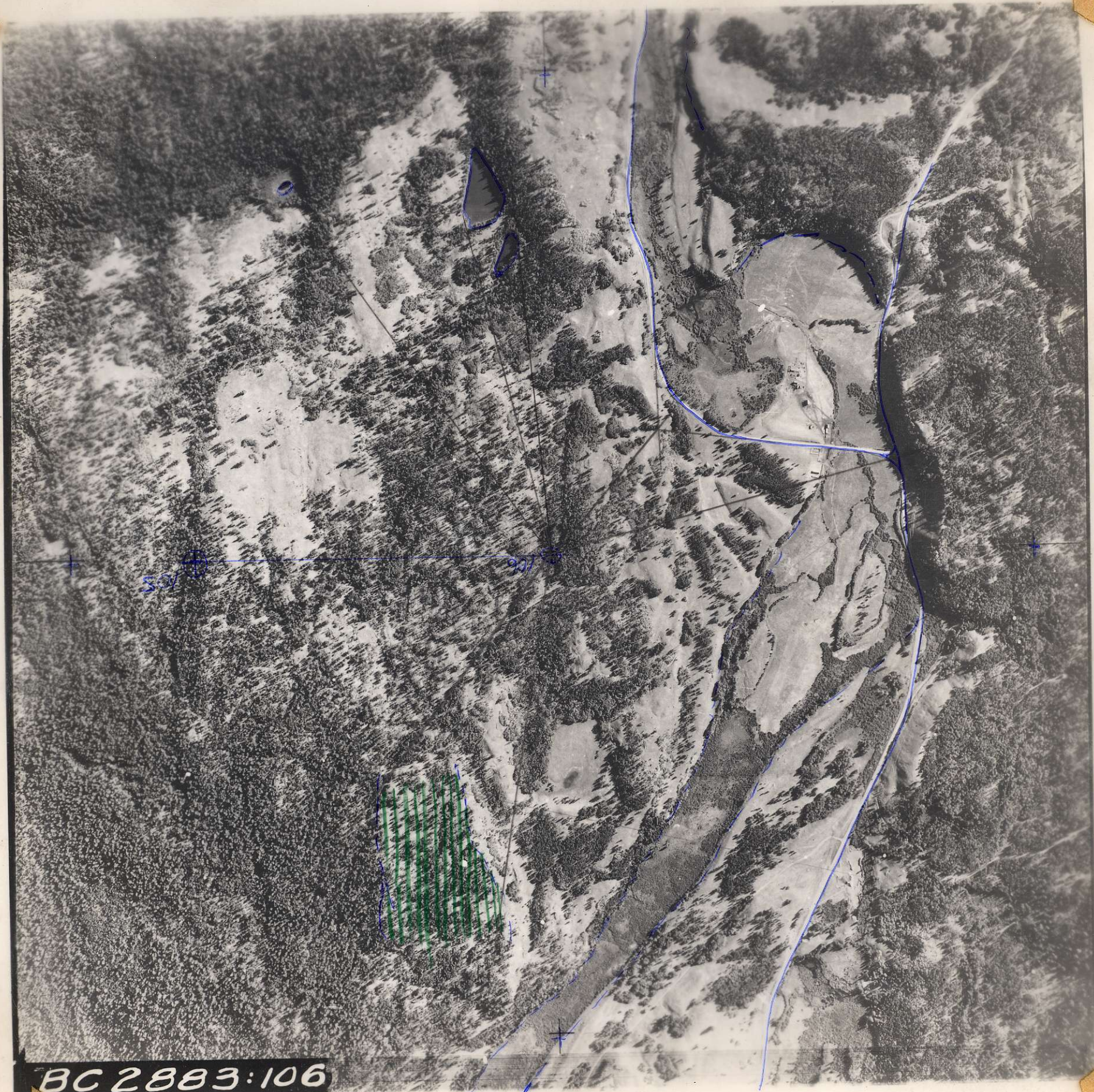
SEP 9 1960

Obtain reprints & tech data from  
Air Division  
Dept. of LANDS & FORESTS, Victoria, B.C.

NARROW ANGLE

20 CHAINS = 1 INCH

(APPROX)



BC 2883:106

NORTH