

~~021258~~
021676

A REPORT ON THE DIAMOND DRILLING
AND
GEOPHYSICS WORK
DONE ON
THE MOE GROUP OF CLAIMS
GREENWOOD MINING DISTRICT

D. F. Irving — Geological Engineer

J. S. Kermeen — P. Engineer

August, 1961

TABLE OF CONTENTS

	Page
Introduction.....	1
Summary and Conclusions	1
1961 Work Schedule	2
Schedule of Claims	3
Geology	4
Appendix - List of Maps	4

INTRODUCTION

In the summer of 1959, a combined magnetometer and electromagnetic (Doolimeter) survey, under the direction of P. R. Matthew of Phoenix Copper Company Limited, was conducted over the Moe Group of claims situated two miles west of Eholt, B. C. The six claims lie immediately west of Bolduc Lake. A seventh claim, the Bell Flower, is a Crown Grant which is under lease by the company. The geophysical investigation indicated a strong magnetic anomaly and some evidence of an electrical conductor. During May of 1961, Phoenix Copper Company decided to diamond drill the anomalous area. This report describes the work done on the claims this year.

SUMMARY AND CONCLUSIONS

The Moe Group of claims situated about one mile east of Jewel Lake was diamond drilled during June and July of 1961 by Boyles Bros. of Vancouver for Phoenix Copper Company of Grand Forks. A total of 1122 ft. of AX core resulted from the drilling of two holes at a cost of \$6,766.00. The rocks were found to consist of interbedded lava flows and conglomerates with quartzite intruded by diorite and numerous feldspar porphyry dykes. Finely disseminated magnetite occurs in the flows. Sulphide mineralization was negligible. Diamond drilling substantiated the magnetic anomaly in that some of the flows were found to have a significant magnetic content. However, no evidence was found of an electro-magnetic conductor and was further substantiated by the negative results obtained with the Ronka Horizontal Loop. The geological structure is undetermined, but with no indication of an ore body, it is not too important. In lieu of the assessment work, 18 claims have been recorded and are in good standing until the summer of 1966. Further expenditure of money on this property is not warranted.

In Hole No. 1, the sedimentary horizon has 20 to 25 feet of greyish-white quartzite on top. The remaining 110 feet is quartz-pebble conglomerate with biotitic interstitial matrix. Hole No. 2 contained 65 feet of sharpstone conglomerate. The pebbles appear to be predominantly cherty in nature and in colours of green, pink and white.

Mineralization in the core is scarce. The main mineral is finely disseminated magnetite contained within the volcanic rocks. Occasionally, a few grains of pyrite occur in the flows. Minor disseminated pyrite plus localized pyrrhotite occurs in the sedimentary horizons.

Thus, the drilling found the cause of the magnetic anomaly but not the electrical conductor which was believed to exist. The absence of a sulphide conductor was substantiated late in the drilling program when the Ronka Horizontal Loop gave negative results.

From No. 1 Hole, 13 feet of quartzite were assayed for gold and silver.

1961 WORK SCHEDULE

On June 17th and 18th, an additional 20 claims were staked in the area which completely surrounds the Moe 1 to 6 claims. Two of these, Moe 25 and Moe 26, were staked as fractional claims.

Commencing on June 22nd, Boyles Bros. Diamond Drilling of Vancouver, B. C., under the direction of Mr. W. Wells, moved onto the property with a Model B.B.S. 1 drill. Diamond drill Hole No. 1 was started on June 26th and completed on July 5th at a depth of 430 feet. It is a vertical hole. Hole No. 2 was started on July 8th and completed on July 26th at 692 feet. This hole dips at minus $53\frac{1}{2}$ degrees and strikes due south. The drillers moved out on the 27th. All core was AX.

On July 21st, a check electromagnetic survey was run on lines totalling some 5000 feet using a Ronka Horizontal Loop instrument. Results showed no definite indication of a conductor.

The drill program was supervised by D. F. Irving and the geophysics by J. S. Kermeen, both employees of Phoenix Copper Company Limited.

SCHEDULE OF CLAIMS

<u>Claim Name</u>	<u>Record No.</u>	<u>Tag No.</u>	<u>Due Date</u>	<u>Locator</u>
Moe 1 - 6	16799 - 16804	B73277 - B73282	July 30, 1965	P.R. Matthew
Moe 7	18263	220241	June 21, 1962	D.F. Irving
Moe 8 - 11	18264 - 18267	220242 - 220245	June 21, 1965	D.F. Irving
Moe 12	18268	220246	June 21, 1962	D.F. Irving
Moe 13	18269	220247	" " 1965	"
Moe 14	18270	220248	" " 1962	"
Moe 15	18271	220249	" " 1965	"
Moe 16	18272	220250	" " 1962	"
Moe 17	18273	220251	" " 1965	N.J. Kirby
Moe 18	18274	220252	" " 1962	"
Moe 19 - 21	18275 - 18277	220253 - 220255	" " 1962	"
Moe 22	18278	220256	" " 1965	"
Moe 23	18279	220257	" " 1965	"
Moe 24	18280	220258	" " 1962	"
Moe 25 Fr.	18281	220259	" " 1965	"
Moe 26 Fr.	18282	220260	" " 1965	D.F. Irving
Bell Flower	C.Gr. L.3151		Oct. 12, 1965	

GEOLOGY

Surface outcrops in the area consist predominantly of massive dark grey to grey-green lava flows which appear to dip about 35 degrees northerly. To the east and west of these flows are dioritic rocks.

Diamond drilling showed that the area consists of a series of flows interbedded with quartzite, pebble conglomerate and sharpstone conglomerate. These bedded horizons have been intruded by diorite and feldspar porphyry dykes of various colour. The core indicates a dip of 40 to 45 degrees as seen in flowage, bedding and contacts, but the strike is unknown.

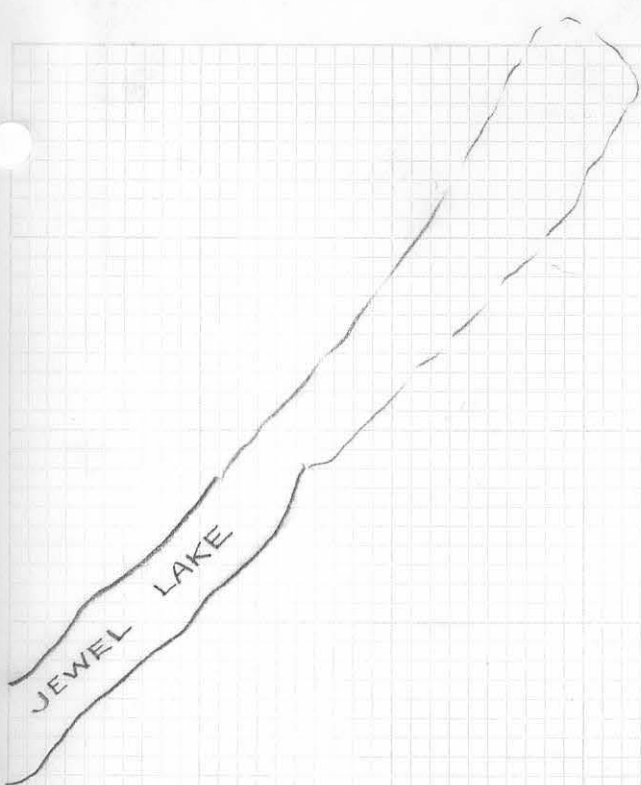
APPENDIX

Claim Map

Drill Hole Plan

Section Showing Diamond Drill Holes

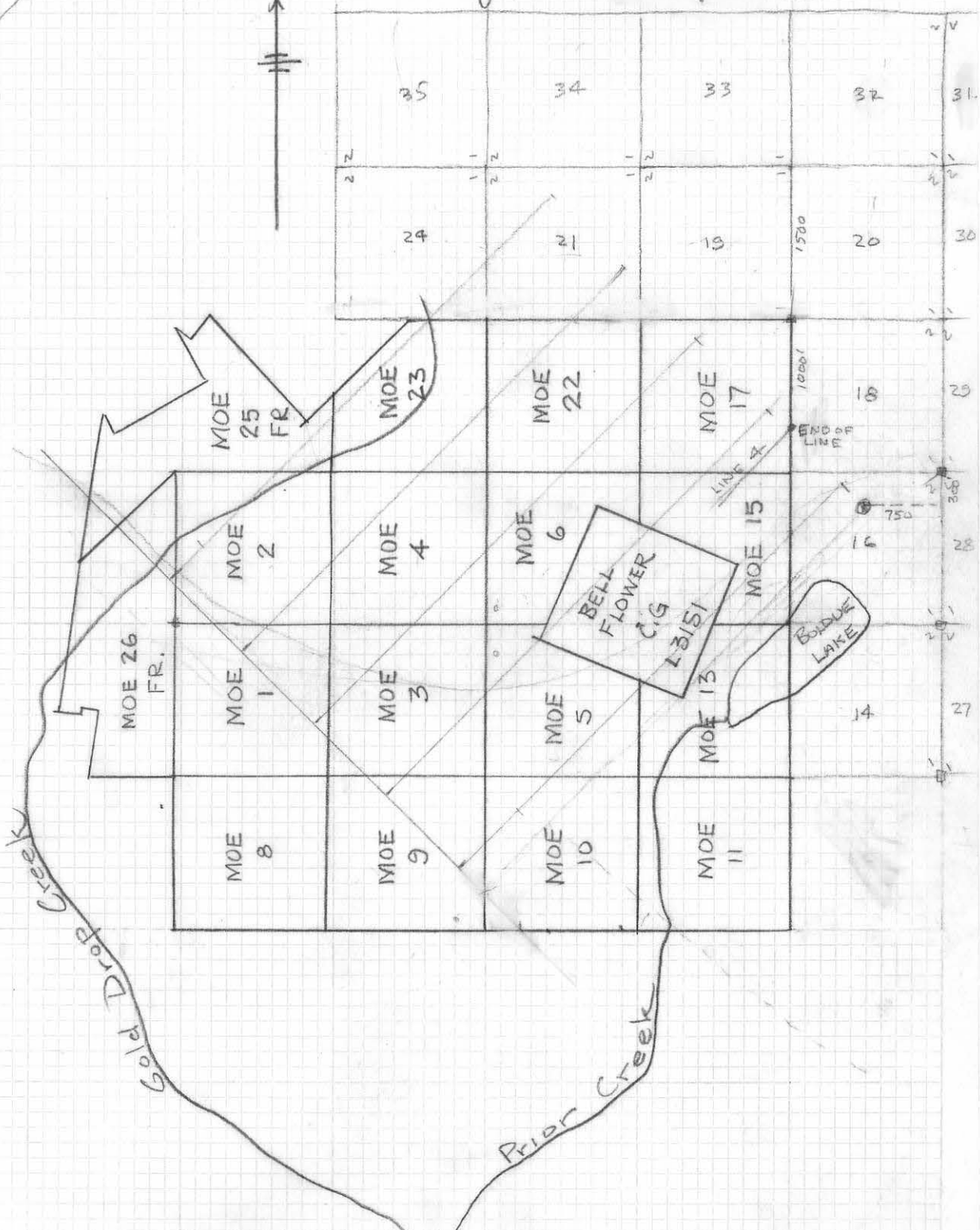
Geophysics Survey

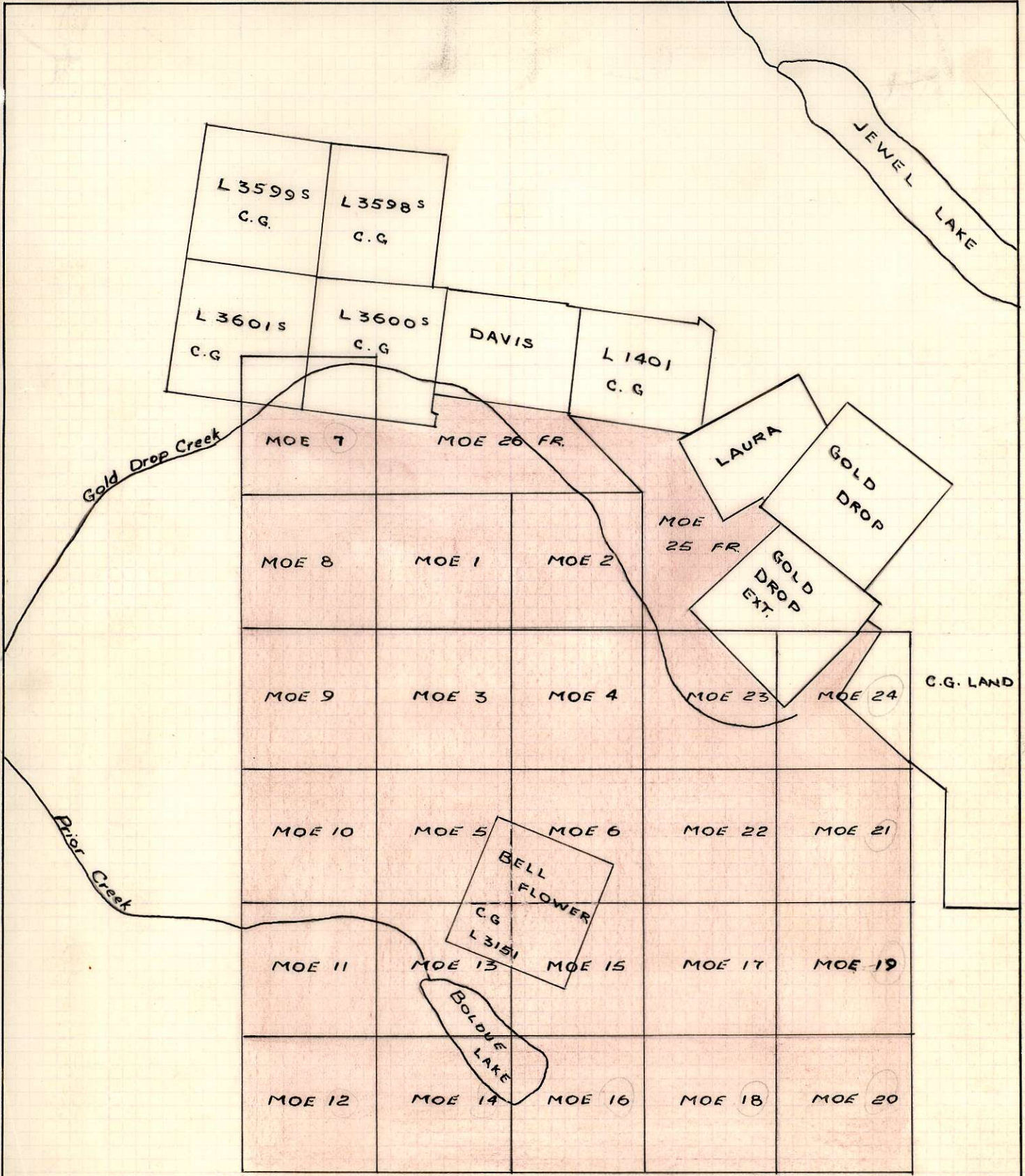


MOE GROUP

SCALE 1" = 1500'

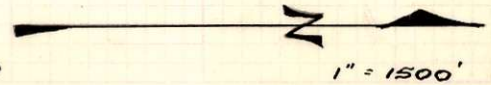
J. Paston Sept. 1965





PHOENIX COPPER
 CO. LTD. CLAIMS.
 JULY 1961

CLAIM MAP



1" = 1500'

MOE 4

MOE 6

MOE 3

MOE 5

Elev. 4200.0

1800N
2800E

1600N
2800E

Δ A 4154.0

Δ B 4117.9

Δ C 4106.7

D.D.H. No. 2
692' -53 1/2°

1200N
2800E

D.D.H. No. 1
430' -90°
Elev. 4071.8

10,00N

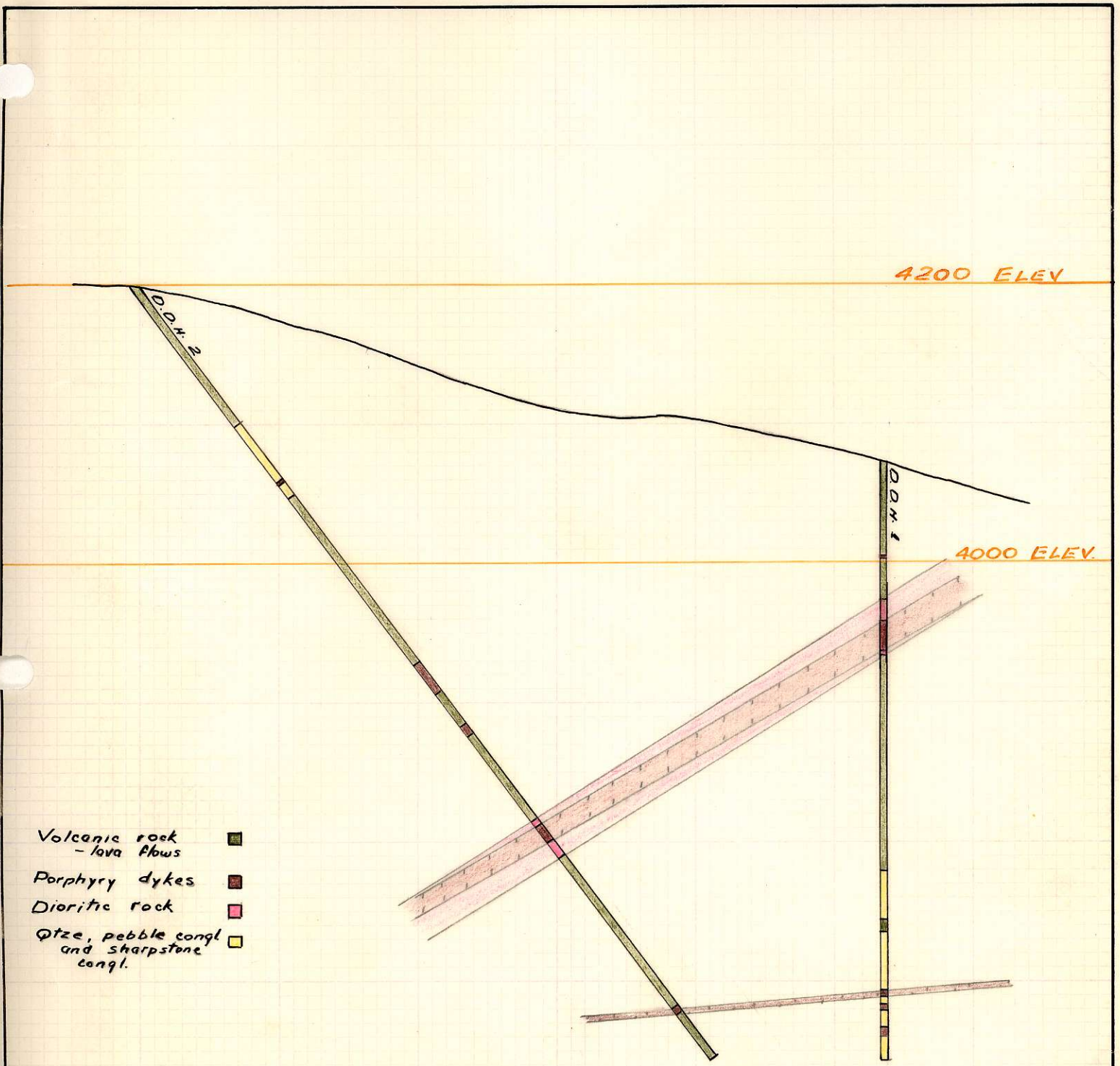


Line of sight to Microwave on Knob Hill

Geophysical Co-ord ○
Transit station Δ

DRILL HOLE
PLAN
OF
MOE GROUP.

1" = 100'



SECTION Q-Q

1" = 100'

