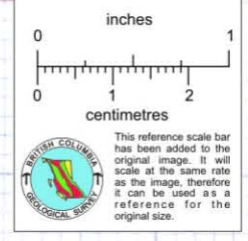
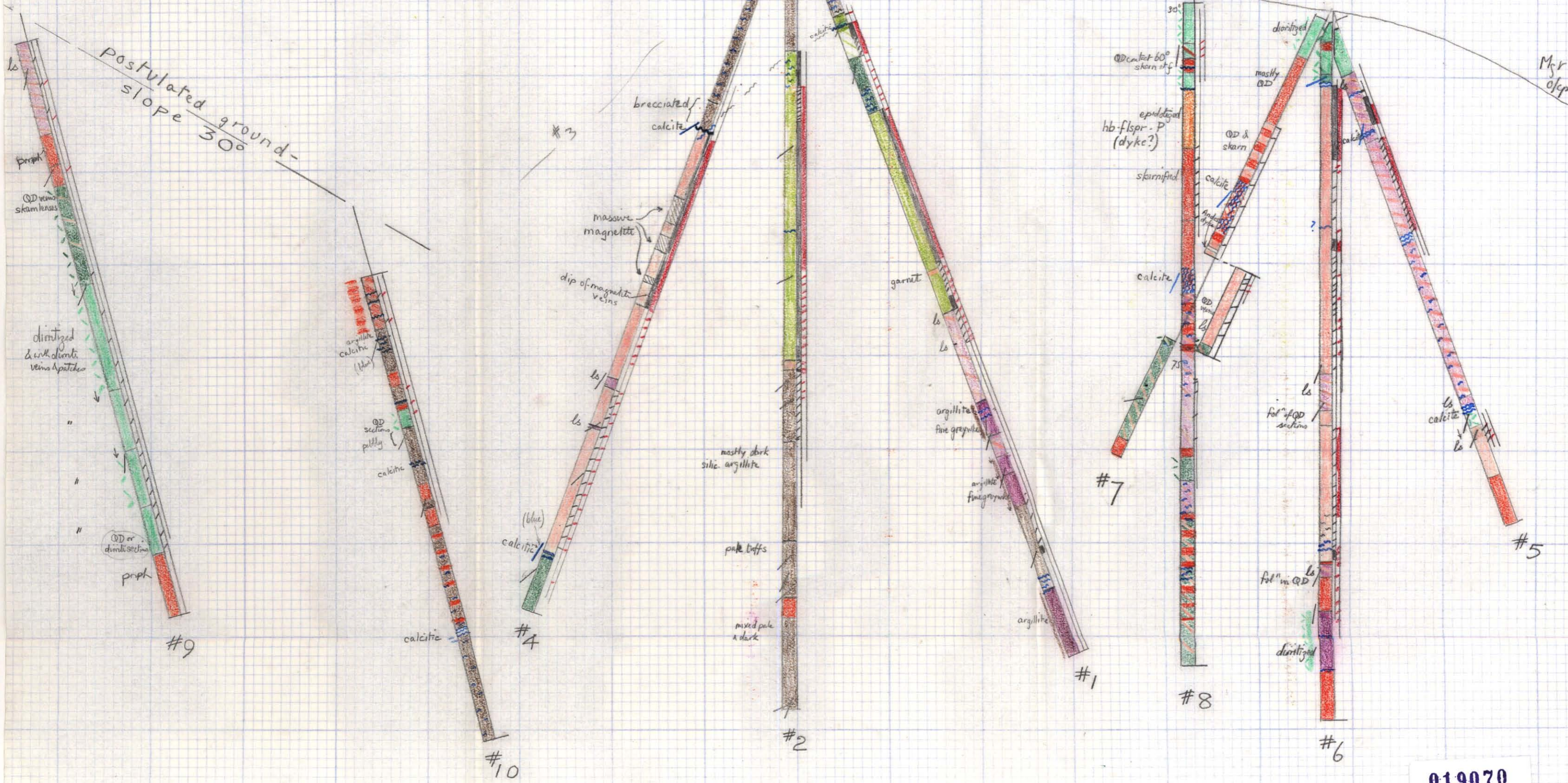


- skarn (mgt, epidote, hb, chl, omph, etc.)
- garnet-skarn
- limy sed. rocks
- non-limy sed. rocks 1) siliceous
- " " " 2) argillite, GW/siltstone
- andesite  porphyritic andesite
- andesite tuff  " " tuff
- diorite, quartz diorite

- magnetite
- chalcopyrite (or malachite)
- pyrite, pyrrhotite



NORTH MAX  
(GRANDUC MINES LTD.)  
Scale: 1 in = 50 ft.  
Logged by: J.M. CARR  
date: July 1961



019070