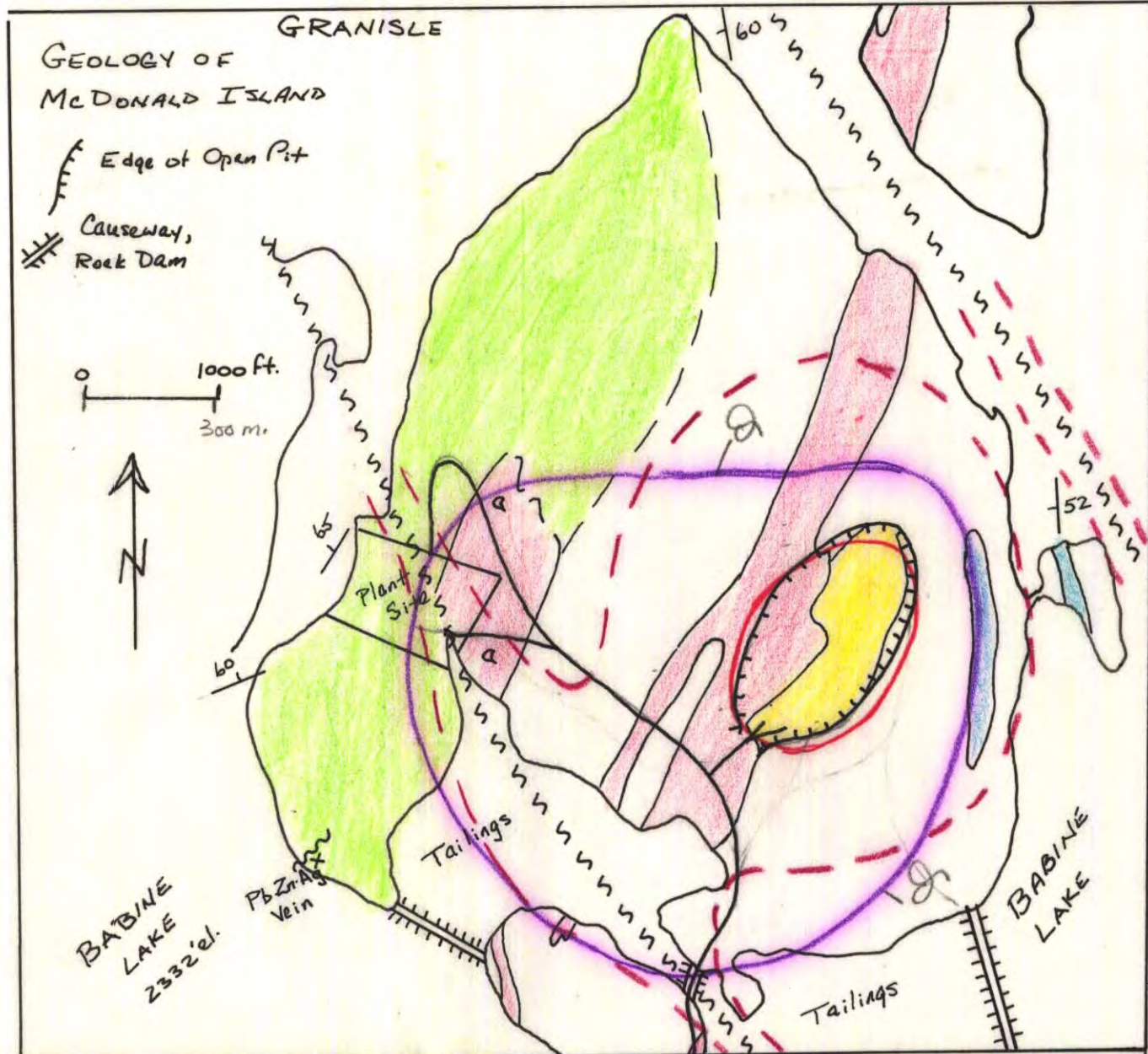


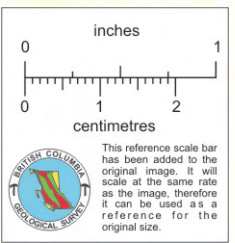
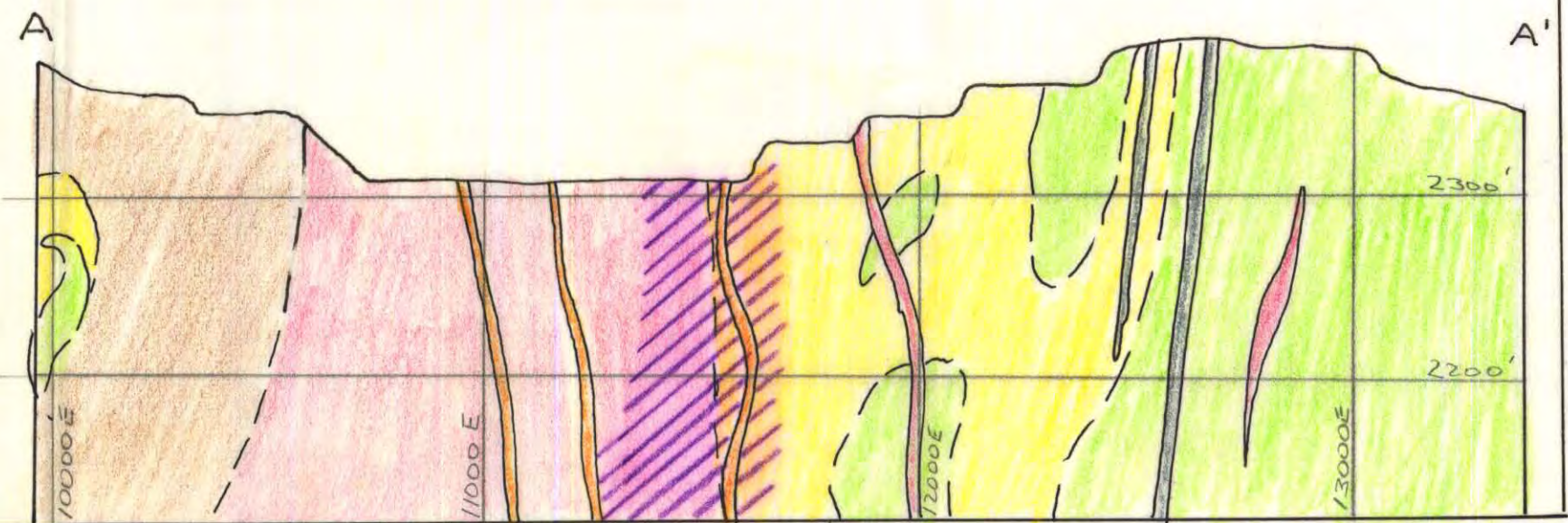
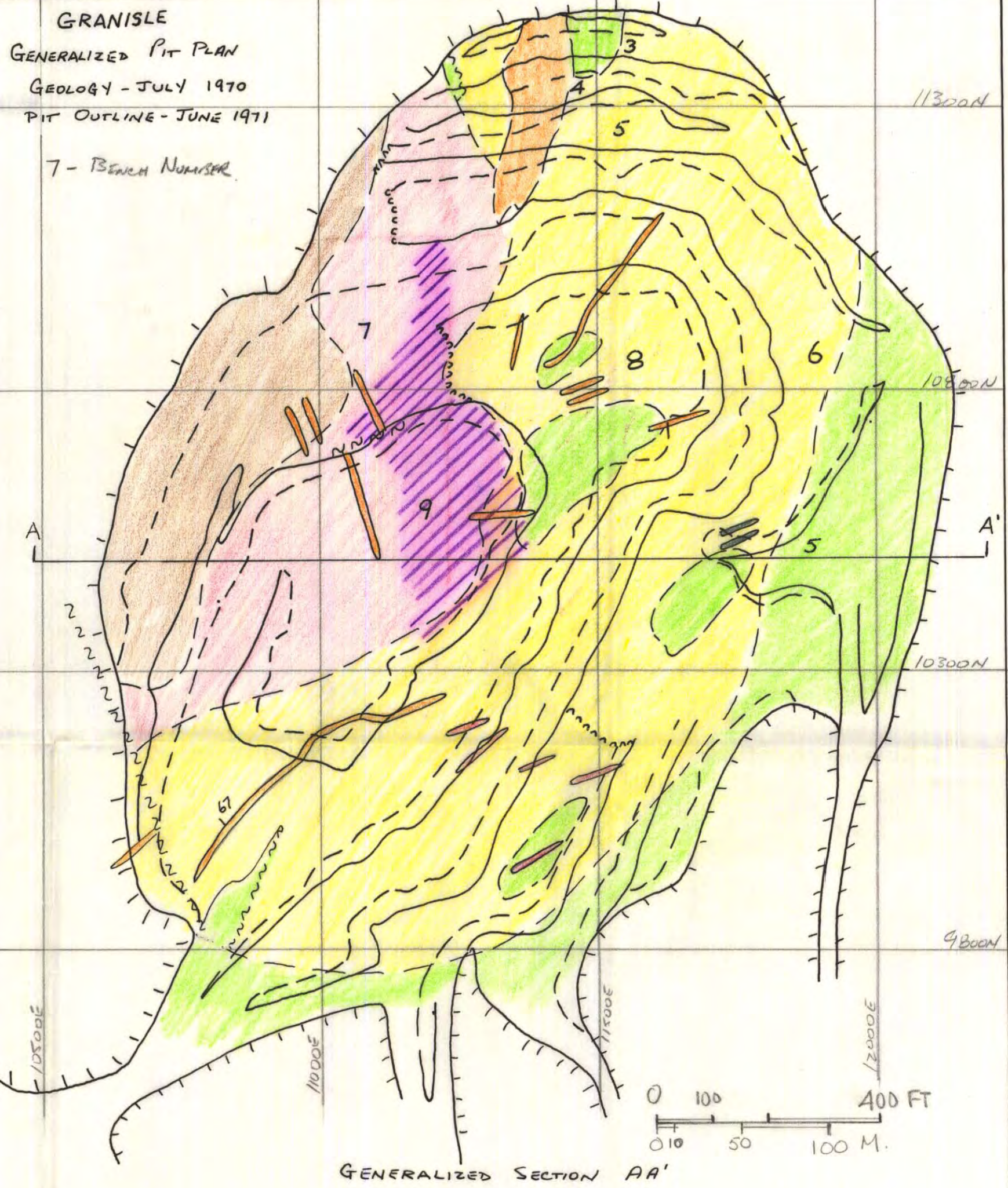
Reduce 2:1 TO PAGE HEIGHT



- | | | | |
|--|---|--|--|
| | Biotite-Feldspar Porphyry
a- Dacite Porphyry | | Bedding |
| | Quartz Diorite and
related breccias | | Fault |
| | Massive & Amygdaloidal
Andesite | | Contact, defined, assumed |
| | Fragmental Volcanic Rocks | | Limits of Secondary Biotite Alteration |
| | Shale, siltstone, pebble conglomerate | | Limits of Quartz-Sericite, Carbonate-Pyrite Alteration |
| | | | Corrected outline |

GRANISLE MINE GEOLOGY

- | | |
|--|---|
| | Biotite-Feldspar Porphyry - dark grey |
| | Biotite-Feldspar Porphyry - leucocratic |
| | Intrusive Breccia Zone |
| | Biotite-Feldspar Porphyry - Gray, Massive |
| | Biotite-Feldspar Porphyry - medium grey, fractured, mineralized |
| | Quartz Diorite, fine grained |
| | Metavolcanic and MetaSedimentary Rocks. |



93L 146
FOLD OUT

FIG. 13