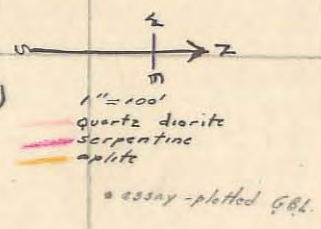


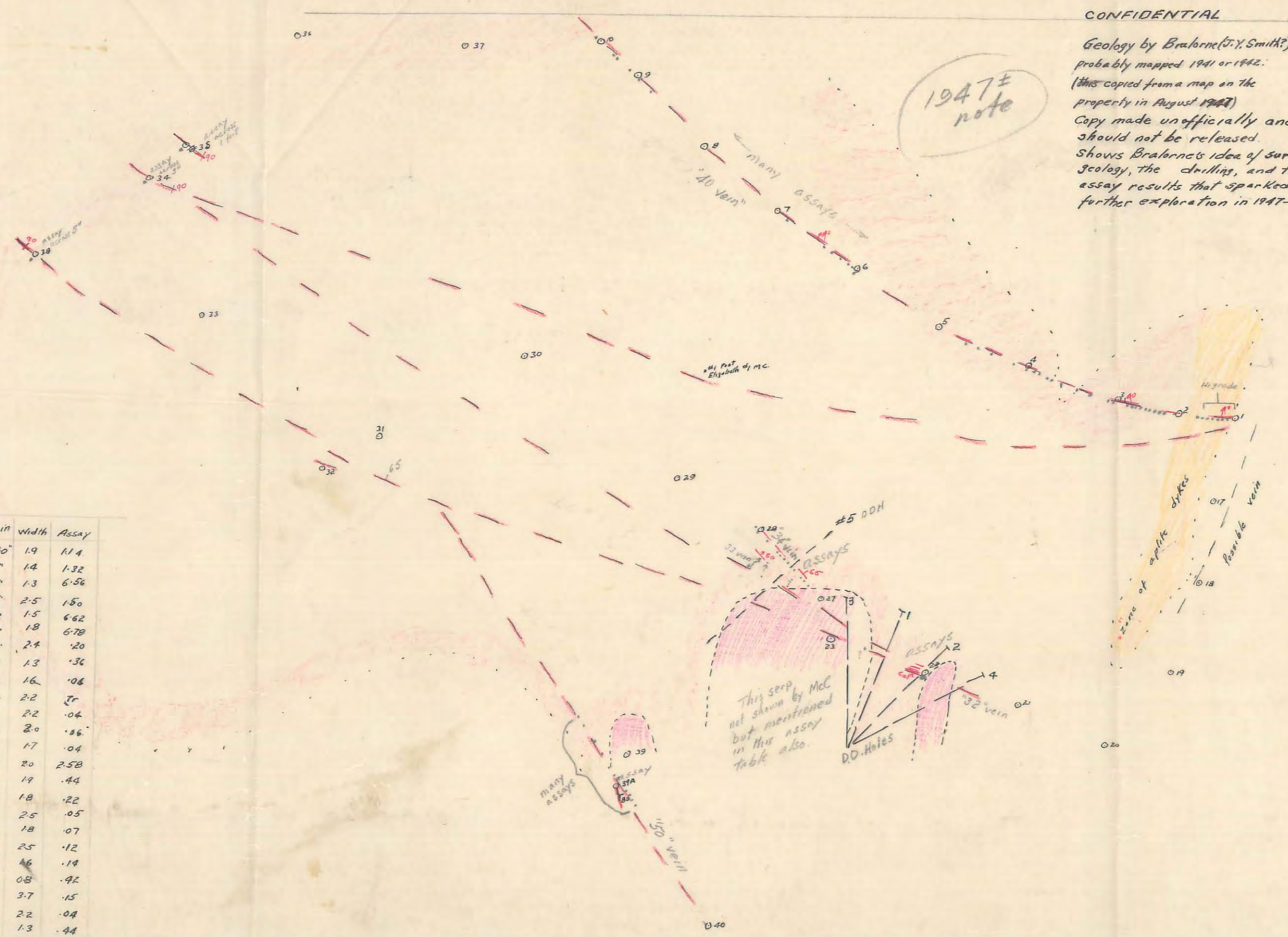
CONFIDENTIAL

Geology by Brahm (J.Y. Smith)
probably mapped 1941 or 1942.
(this copied from a map on the
property in August 1947)
Copy made unofficially and
should not be released.
Shows Brahm's idea of surface
geology, the drilling, and the
assay results that sparked
further exploration in 1947.



PROPERTY FILE
980 012-06

1947 note



Hole No.	From - To	Length	Assay	Geo. Missing	Location	Vein	Width	Assay
1	118-123	5.1	.02	10	224655	32	1.0	.05
1	123-126	3.0	.03	10	" (Scrp in FW)	"	1.5	.17
1	126-130	4.0	1.77	10	St 27+0	34	2.1	.04
1	130-132.5	2.5	.03		+195	"	2.2	.03
2	120-120.5	0.5	.49		+255	"	2.0	.02
3	130.5-131.5	2.0	Tr	1.0	305	"	0.7	.02
3	137-137.5	0.5	Tr		405	"	0.3	.03
4	147.5-129	18	.01	0.5	455	"	1.1	.31
4	139.5-141.5	2.0	.09	0.5	505	"	0.3	.04
4	143.5-149	5.4	.12	0.1	555	"	1.0	.05
4	145-147	2.0	.02		605	"	0.5	.03
4	148.5-150.5	2.0	Tr		655 (WV)	"	0.5	.02
5	53-55	2.0	Tr		655	"	0.4	.01
5	58-61	3.0	Tr		St 20+13N	"	1.3	.05
5	114-115	1.0	.02		+0	"	65	.06
5	123-125.5	2.5	.02		+35	"	25	Tr

Location	Vein	Width	Assay
St 6 + 0	40	18	.03
+55	"	0.6	.02
105	"	0.3	.02
205	"	0.4	Tr
305	"	0.6	.07
405	"	0.7	.06
St 7 + 12N	41	.04	
St 9 + 20N	50	.19	
+3N	41	.05	
+105	58	.08	
St 10 + 25N	09	.26	
+22N	13	.05	
+55	09	.09	
Flat	?	20	.51
St 30 + 0	04	8.24	
St 35 + 0	10	.84	
St 34 + 0	04	.38	
St 29 + 24E	10	.75	
St 22+0 (FW)	32	30	.02
(Center)	70	1.41	
(L.H.V.)	50	.48	
St 1-51 + 105	40	20	4.05
St 1405-51 + 1205	30	.05	
	10	.04	
	0.8	.08	
Scut	32	3.5	.20

Location	Vein	Width	Assay
St 1 + 75	40	19	1.14
125	"	1.4	1.32
175	"	1.3	6.56
225	"	2.5	150
275	"	1.5	6.62
325	"	1.8	6.70
375	"	2.4	.20
St 2 + 53	13	.36	
St 3 + 50N	16	.06	
45N	22	Tr	
40N	22	.04	
35N	20	.86	
30N	17	.04	
25N	20	2.58	
20N	19	.44	
15N	18	.22	
10N	25	.05	
55	18	.07	
105	25	.12	
705	46	.19	
755	08	.92	
625	37	.15	
725	22	.04	
775	13	.44	
875	27	.38	
715	12	.84	
St 4 + 0	17	.02	
+145	22	.08	
+185	24	.05	
+375	11	.03	
+525	13	.02	
+665	24	.01	

most probably
only 12' wide (McEwen exp 6")
"meanly"
width 2' x 3'
and sample lengths 10' 17'

013174

