

Jericho

1" = 1320'

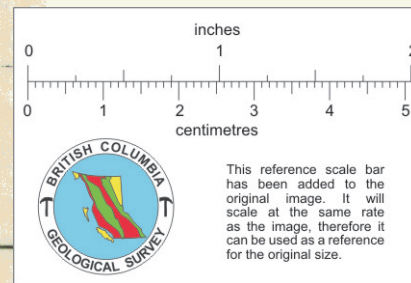
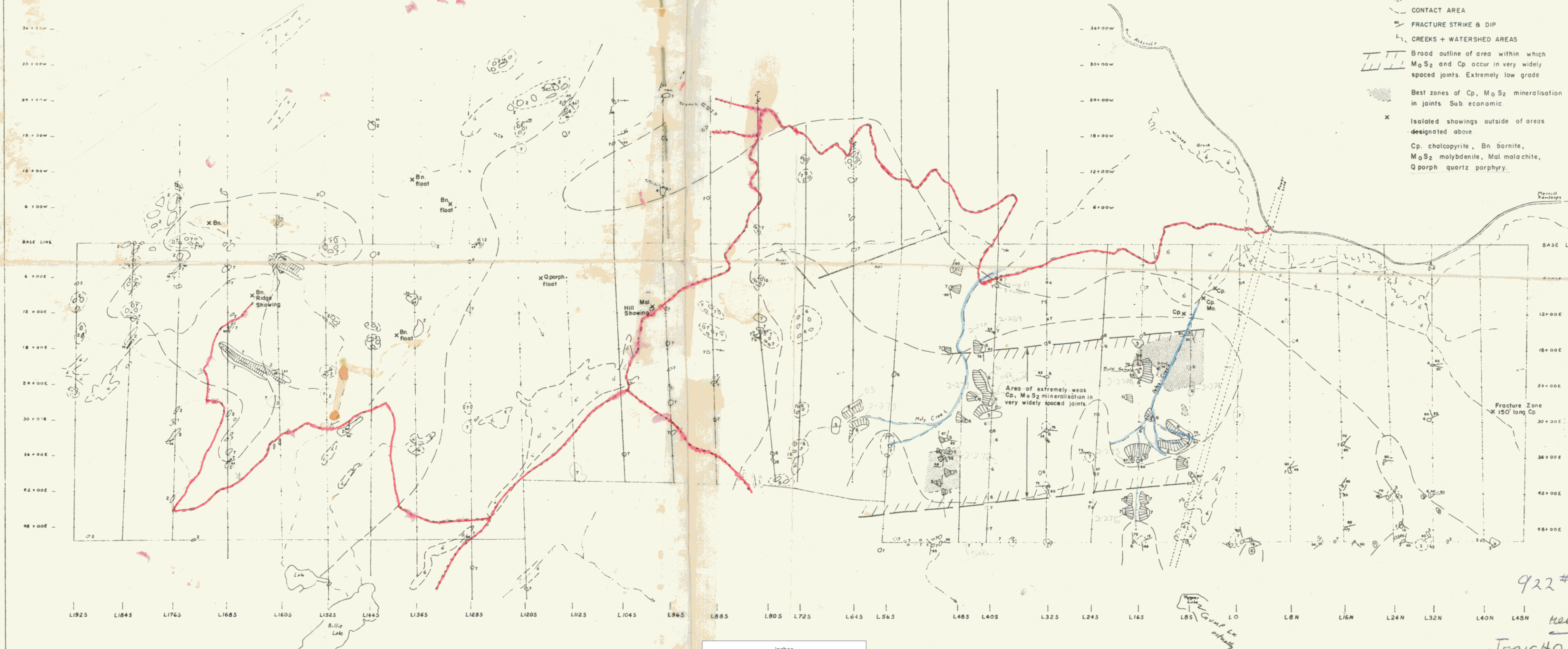
Map 1

92I/7e

- 7 Skeena Granodiorite - Bethlehem
- 6 Altered Bethlehem
- 5 Aplite D2-D7
- 4 Guichon
- 3 F.g. Diorite
- 2 Minex Granite
- 1 Bethesda Float
- Q porph qtz porphy

LEGEND

- 7 SKEENA GRANODIORITE
- 6 ALTERED SKEENA (QTZ, K, ENRICHED)
- 5 APLITE + MICROGRANITE
- 4 GUICHON GRANODIORITE
- 3 F.G. DIORITE
- 2 MINEX GRANITE
- 1 BETHSAIDA FLOAT
- OUTCROP
- BOULDER AREA
- OUTCROP AREA
- CONTACT AREA
- FRACTURE STRIKE & DIP
- L CREEKS + WATERSHED AREAS
- ▨ Broad outline of area within which MoS₂ and Cp occur in very widely spaced joints. Extremely low grade
- ▨ Best zones of Cp, MoS₂ mineralisation in joints. Sub economic
- x Isolated showings outside of areas designated above
- Cp. chalcopyrite, Bn. Bornite, MoS₂ molybdenite, Mal. mala chite, Q porph quartz porphyry.



92I/7e, 7f

CANADIAN SUPERIOR EXPLORATION LIMITED
 JERICHO PROJECT - ASHCROFT, B.C.
 SOUTH GRID
 GEOLOGICAL PLAN

010357

MAP 1

To accompany Report on 1966 Field Work
 on Jericho Mine (L.M.), Kamloops, B.C. Nov. 7/66
 S. Sigurd-Rasmussen, B.Sc. F.G.A.C.

922 #1
 reduced to
 JERICHO 1" = 1320'
 92I/7e