



RAPIFAX COVER SHEET

DATE Dec 13 / 89 OUR FILE NO _____

MESSAGE TO: Doug Leishman Fax 828 8766
Places Dome Kamloops

FROM: MINFILE

#247 - 541 Superior Street
Victoria, B.C. V8V 1X4
PHONE: 356 2825
OUR FAX NO. 387-3594

COMMENTS: The map shows the south zone
we also have a map showing drilling
on the north zone

NUMBER OF PAGES INCLUDING THIS SHEET: 8



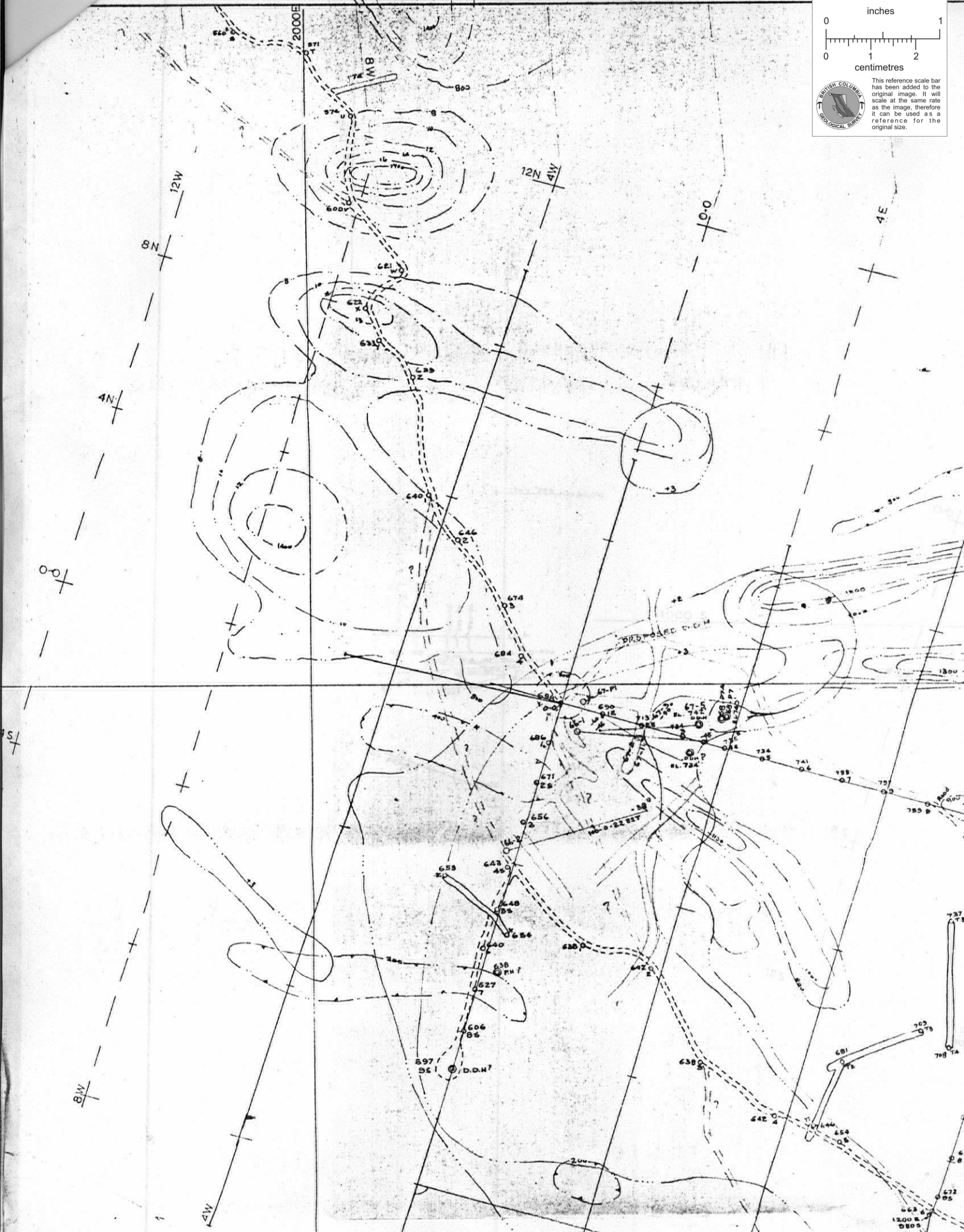
+ Page 2-4 of Report
drill data

NE 056-055

0 1
inches
0 1 2
centimetres



This reference scale bar has been added to the original image. It will scale at the same rate as the image, therefore it can be used as a reference for the original size.



To accompany the Geological and Engineering Report
 by D.W. Pringle, P. Eng. on the Primer Group,
 S.E. Missezula Lake, Princeton Mining Division,
 B.C. 27 October, 1968.

17 March 1969 D.W. Pringle

6000 S

8s

12s

16s

20s

24s

LOWER DAM

LEGEND

	COMPAS & CHAIN SURVEY
	'CAT' GRID LINES FROM AERIAL PHOTOS
	BLAZED GRID LINES
	MAGNETOMETRIC CONTOURS
	GEOCHEMICAL CONTOURS
	DIAMOND & PERCUSSION HOLES

ELEV. DATUM COLLAR DDH. 68-2 = 0.0 FT. NORTH ZONE

8000 S

6000 E

L.J. MANNING & ASSOCIATES LTD.
 CONSULTING ENGINEERS
 VANCOUVER, BRITISH COLUMBIA

PRIMER GROUP MINERALS N.P.L.
 "SOUTH" ZONE

DATE JULY 1968	SCALE 1 IN. = 200 FT.
SURVEYED BY F.H.	CHECKED BY
DRAWN BY S.M.M.	FILE NO. 92 H 16W
TRACED BY S.M.M.	DRG. NO. 68-2