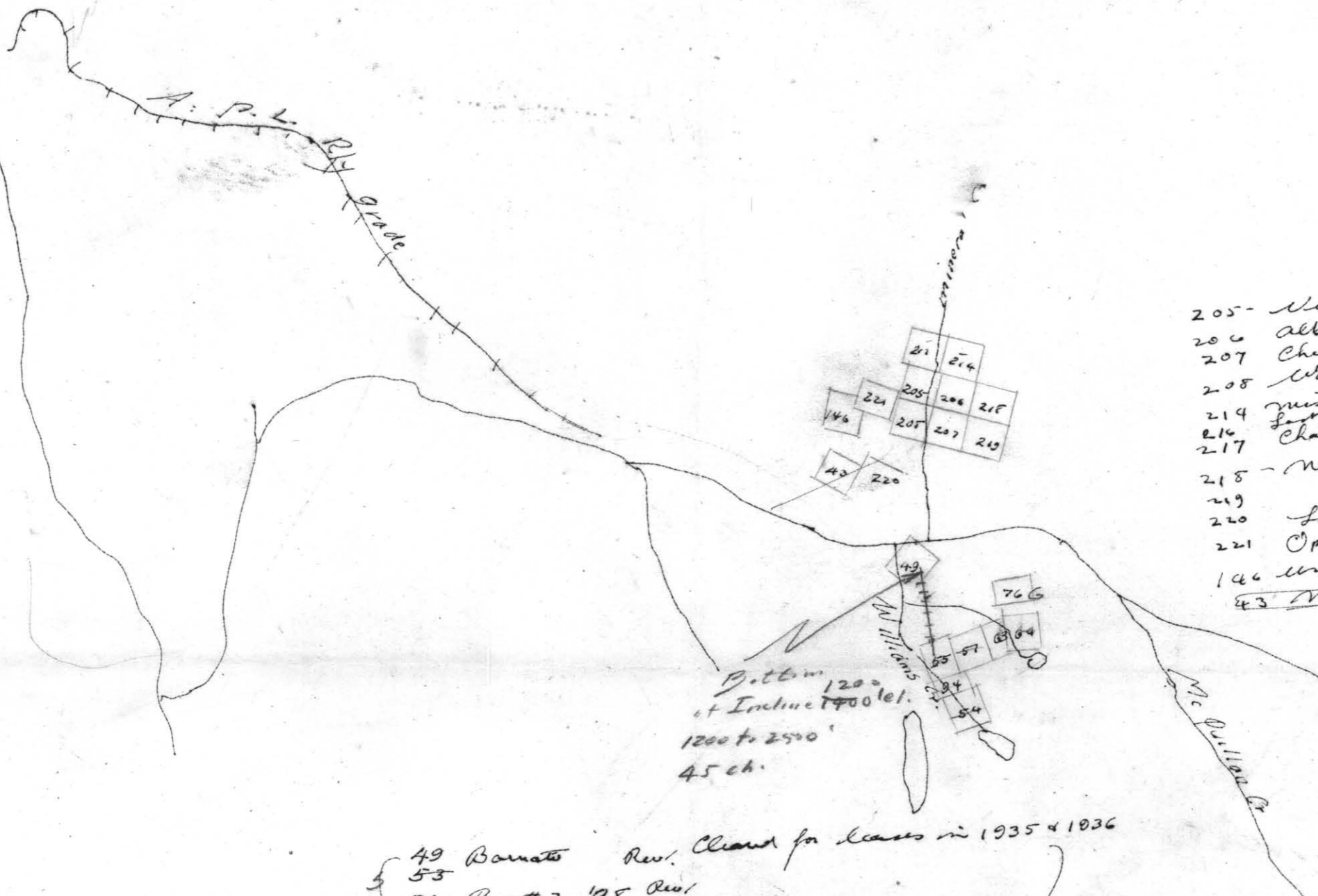


Albani Canal



205	Victoria Co	1931	G. M. Catbrent
206	Albani	1929	"
207	Chicago	1929	"
208	Warspite	"	Doctor Stewart
214	Missy Link	1934	F.S. Wilson
216	Fort Waller	34	"
217	Champion	34	"
218	New G.G.	reclaim	J. Taylor
219	"	"	G. M. Campbell
220	Larkhouse	1934	Damon Turner
221	Ophir	34	G. M. Catbrent
146	Union	34	
43	Miner Rev.		

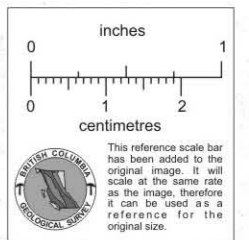
Bottom 1200  
ft Incline 700 ft  
1200 to 2500  
45 ch.

- 49 Barnato Rev. Cleared for leases in 1935 & 1936
- 53
- 54 - Reg # 3 '98 Rev.
- 55 - " # 2, '98 Rev. 1930 John T. Thompson - good.
- 57 " # 1 Rev.
- 63 - Hummingbird Rev.
- 64 - Blackbird Rev.
- 76 - Estrella Rev.
- 94 - Reg. # 2 ext. C.G. 1930

Lands Office

Write Gold Commission in the Rev.

**92F/2E**  
**92F-178**  
**PROPERTY FILE**



006993