

1710 - 609 GRANVILLE ST  
 PO BOX 10363  
 VANCOUVER BC  
 CANADA V7Y 1G5  
 (604) 683-7265 FAX 683-5306  
 BBS 683-7200

# George Cross News Letter

"Reliable Reporting"

RECEIVED

WESTERN CANADIAN INVESTMENTS

COPYRIGHT  
 ALL REPRODUCTION  
 RIGHT RESERVED  
 PUBLISHED DAILY  
 SUBSCRIPTION RATE  
 \$315.00 PER YEAR

AUG 19 1994

NO 156 (1994)  
 AUGUST 16, 1994

NO. 156 (1994)  
 AUGUST 16, 1994

E. M. P. R.

SPOKANE RESOURCES LTD.

[SKN-V] 5,056,360 SHS.

INTERNATIONAL ENEXCO LTD.

[IEC-V] 2,532,463 SHS.

ENCOURAGING ASSAYS RECEIVED - G. Arnold Armstrong,  
 secretary, reports

Spokane Resources 75% and joint venture partner International Enesco Ltd. 25% have completed 12 drill holes, totalling 3,687 feet on the Spokane gold property northwest of Lillooet, B.C. SEE LOCATION MAP OVERLEAF P.3. Consultant, Dr. Hugh Morris, P.Eng., has reported as follows: "Assay results have been received from the first three holes drilled on the Spokane gold project. These holes were drilled as a fence on Section 3 + 25 West to investigate the eastward extension of the mineralization previously established in the 3 + 50 drilling. The holes were drilled vertically on 25-meter centers. On the Spokane property, gold is found in well mineralized and fractured quartz veins which can be readily distinguished from other veins of white 'bull' quartz by the presence of copper values ranging from 0.1% to over 4% copper. There is also a good correlation with low bismuth values.

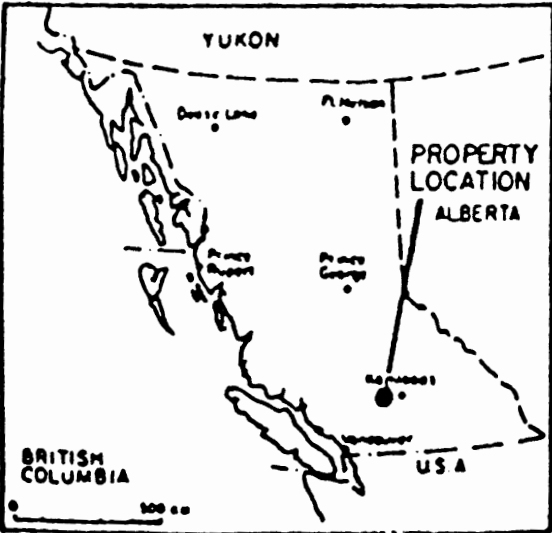
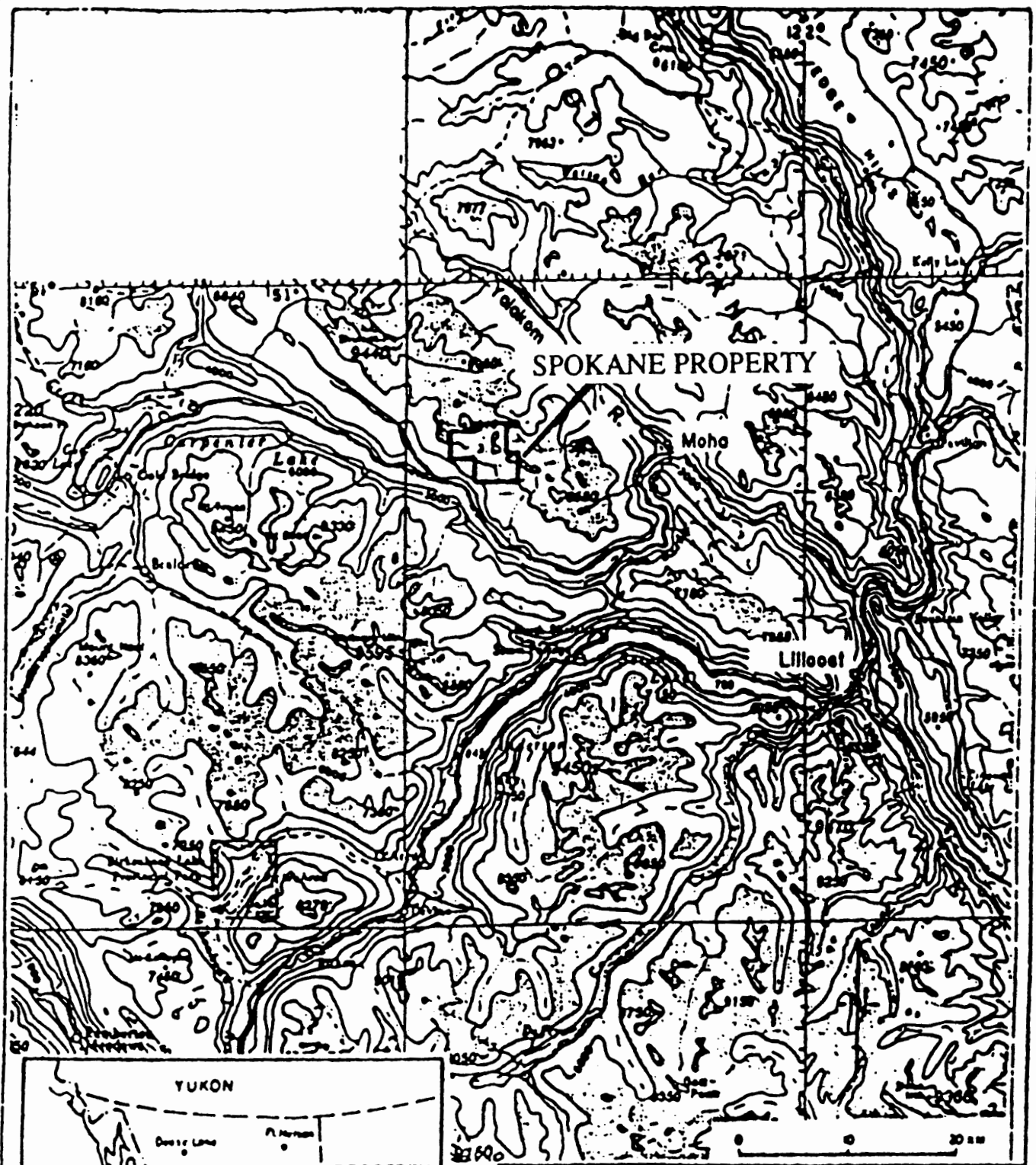
It should be noted there is still some uncertainty about the true dips of the veins intersected, and about hole-to-hole correlation of the well-mineralized intercepts. The lengths quoted are not true thicknesses. Further drilling, together with assay results from additional samples from the next three holes now in the laboratory will be needed before a more confident interpretation can be made.

HOLE NO.	INTERVAL METRES	LENGTH METRES	GOLD OZ/T	SILVER OZ/TON	COPPER %
94-1	3+25W/0+968	-90°			
	70.80-74.05	3.25	0.533	0.79	1.61
	79.85-80.85	1.00	.038	.17	.35
94-2	3+25W/1+228	-90°			
	80.14-84.27	4.13	.041	.31	.75
94-3	3+25W/0+708	-90°			
	21.14-23.65	2.51	.144	.156	.48
	37.0-40.80	3.80	.183	.52	1.13
	43.73-45.90	2.17	.064	.14	.32
	49.80-51.65	1.85	.449	.17	.52

All gold and silver values were obtained by fire assay at Acme Analytical Labs, Vancouver, B.C. All assay averages are un-cut. Individual sample assays range up to a maximum of 1.25 oz. gold/ton, and at this stage there does not appear to be a large 'nugget effect'. These results are encouraging and clearly call for continued drilling to extend and enlarge the presently indicated zone. Assay results from the next fence of holes on Section 3 + 75 W should be in hand shortly and should add substantially to the understanding of the deposit at this location."

An additional six claims, 95 units, adjoining or contiguous to the Spokane property have been staked. (SEE GCNL NO.138, 20Jul94, P.6 FOR OTHER CORPORATE INFORMATION)

920-4  
 P. 1 of 2



SPOKANE RESOURCES LTD. - 75%	
SPOKANE GOLD PROPERTY	
(INT'L ENEXCO LTD. - 25%)	
LOCATION MAP	
BRITISH COLUMBIA	
SCALE - 1 500,000	FIG. 1