

1710 - 609 GRANVILLE ST
PO BOX 10363
VANCOUVER BC
CANADA V7Y 1G5
(604) 683-7265 FAX 683-5306

George Cross News Letter

"Reliable Reporting"
WESTERN CANADIAN INVESTMENTS

Rec'd

JUN 10 1993

LIBRARY

COPYRIGHT
ALL REPRODUCTION
RIGHT RESERVED
PUBLISHED DAILY
SUBSCRIPTION RATE
\$315.00 PER YEAR

NO. 113 (1993)
JUNE 14, 1993

NO. 113 (1993)
JUNE 14, 1993

NEW CANAMIN RESOURCES LTD. [NNI-V]

HUCKLEBERRY DRILL RESULTS - Alan C. Savage, president, reports

New Canamin Resources has received further assays from the 13,500-foot diamond drilling program on the newly discovered East zone of the Huckleberry copper project located 40 km east of Kamano, B.C. New Canamin can earn a 100% interest from Kennecott by spending \$1,500,000 over five years; Kennecott can back-in for 60%.

Prior to the discovery of the East zone, Huckleberry copper mineralization was thought to be confined to an area surrounding a quartz diorite porphyry outcrop measuring 1,200 by 2,500 feet. It is now clear the structural control of the mineralization is linear along some eight km of strike length along which 4.5 km of anomalous copper mineralization has been identified. The East zone remains open along strike and to depth and will be extended by a 20,000-foot diamond drilling program starting in late June. Overleaf is a summary of the drill program and a drill hole map.

New Canamin intends to immediately direct a broad-based exploration program over the entire property and to regionally include its Whiting Creek property located seven km north. A recent special warrant financing of \$4,900,000 and a flow-through share financing of \$650,000 will provide adequate funds for the exploration as well as a feasibility study. (SEE GCNL NO.100, 26May93, P.1 FOR MORE FINANCING INFORMATION)

93E 37

p. 1 of 2

New Canamin Resources Ltd.

PUBLISHED DAILY
SUBSCRIPTION RATE
\$315.00 PER YEAR

NO. 113 (1993)
JUNE 14, 1993

"Reliable Reporting"
MINISTRY OF ENERGY, MINES
AND TECHNICAL SERVICES
WESTERN CANADIAN
AND TECHNICAL SERVICES

Rec'd JUN 16 1993

LIBRARY

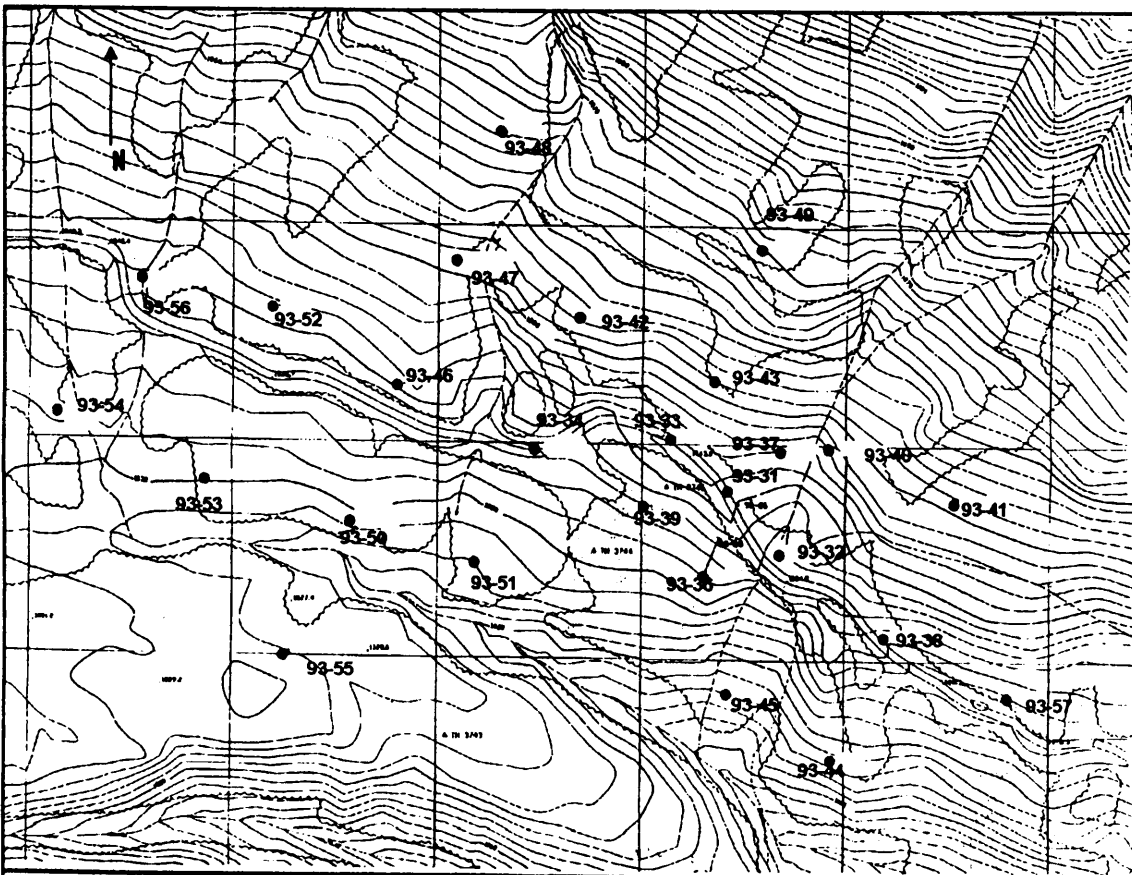
DDH	DIP	INTERVAL	LENGTH	% COPPER
93-31	90	80-130	50	1.03*
93-32	90	70-320	250	0.6
		320-600	280	0.37
93-33	90	80-420	340	0.96
		420-500	80	0.44
93-34	90	90-240	150	0.66
		240-400	160	0.46
93-35	90	90-500	410	0.63
93-36	-60	70-230	160	0.55*
93-37	90	90-205	120	0.63*
93-38	90	60-500	440	0.63
93-39	90	60-520	460	0.55
93-40	90	50-500	450	0.49
93-41	90	60-500	440	0.27
93-42	90	90-520	430	0.61
93-43	90	88-508	420	0.55
93-44	90	140-480	340	0.11**
93-45	90	212-300	88	0.17**
93-46	90	111-540	429	0.63
93-47	90	95-794	699	0.53
93-48	90	100-475	375	0.38
93-49	90	70-500	430	0.12**
93-50	90	140-670	530	0.68
93-51	90	100-520	420	0.61
93-52	90	80-650	570	0.82
93-53	90	80-520	440	0.64
93-54	90	80-510	430	0.51
93-55	90	108-340	234	0.21**
93-56	90	80-660	580	0.69
93-57	90	30-470	440	0.52

* holes lost due to difficult drilling conditions
** holes drilled in pyrite halo

93E 37
P. 20F2

CANADA V7Y 1G5
(604) 683-7265 FAX 683-5306

NO. 113 (1993)
JUNE 14, 1993



New Canamin Resources Ltd.

Huckleberry Project

Scale

100 m

Contour Interval 2m

June 1993 East Zone Drilling Outline