

## DENTONIA RESOURCES LTD. (DTA-V)

### THREE EXPLORATION PROJECTS REVIEWED - Dentonia Resources

has acquired an option from Ronald H. McMillan and William H. Halleran to buy 100% of 50 claim units covering a potential massive sulphide deposit.

The Besshi type copper/gold/zinc massive sulphide prospect is at Polaris Creek and Jupiter Creek, 100 km NW of Germansen Landing, in the Cheni Mine Road, 325 km NW of Prince George, NW B.C. (SEE MAP OVERLEAF P.3)

To acquire the property, Dentonia paid \$10,000 on signing plus increasing annual payments to total of \$250,000 over five years. Optionors to retain a 3% net smelter return on gold, silver, and platinum group; 1.5% net smelter return on all other metals, with a ceiling of \$2,500,000 and \$1,500,000 respectively, thereafter net smelter return reduced to 0.5% in each case. Advance royalties of \$100,000 per year payable on the sixth anniversary date and thereafter until production.

The claim units cover a contact zone between mafic volcanic and clastic sedimentary rocks, i.e. sea bottom sediments overlying igneous volcanic and intrusive rocks with evidence of sea-floor hydrothermal exhalation, a common setting for massive sulphides.

These claims are accessible by logging roads. The contact zone has been traced for three km, is marked by magnetic, VLF-EM and geochemical anomalies. It is covered by overburden along most of the length and has never been drilled. Some of the geochemical anomalies have the following values; copper (to 616 ppm), zinc (to 600 ppm), silver (to 8.8 ppm), gold (to 165 ppb), molybdenum (to 120 ppm), and a few samples were anomalous in nickel. The suite of elements obtained in these samples are typical of Besshi type deposits.

Examples of these types of deposits, in B.C., are Windy Craggy (300 million tonnes grading 2% copper) and Granduc and, in Alaska, the Greens Creek deposit (17.0 million tonnes grading 0.45% copper, 9.7% zinc, 8.8% lead, 816 g/t silver, 6.17 g/t gold).

Research and preliminary exploration on the Polaris Creek and Jupiter Creek occurrences, was conducted over the last year by Dr. Ronald H. McMillan, P.Geol., a specialist on massive sulphide deposits. Data from government and private files indicate these showings were explored for gold in the 1930's.

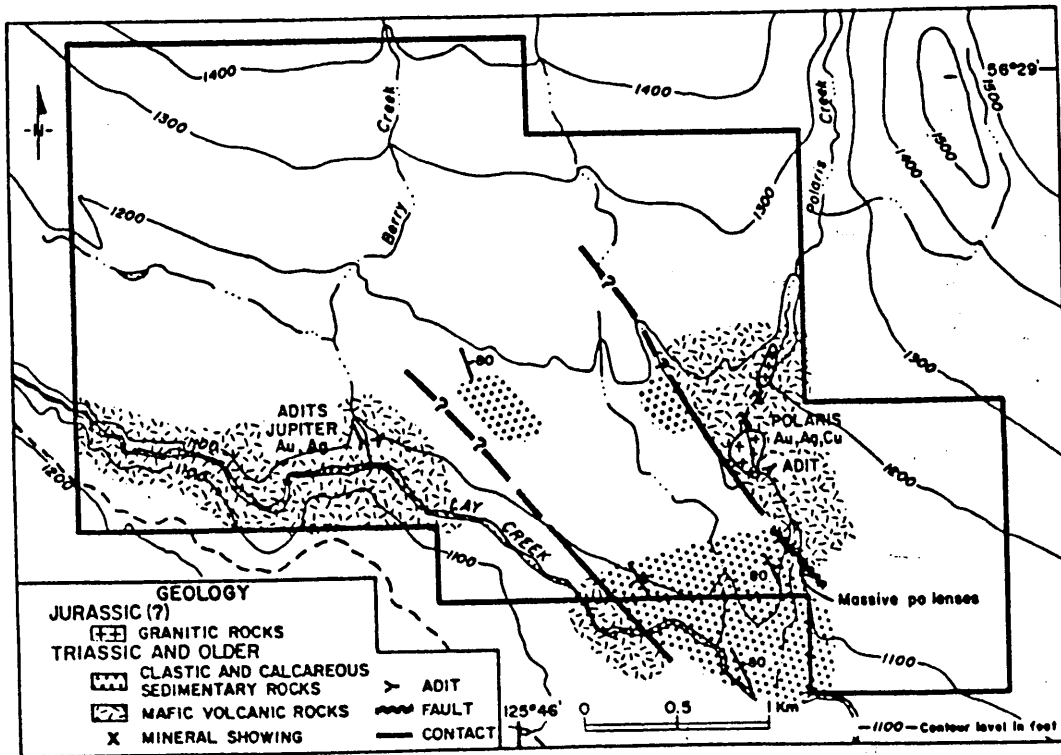
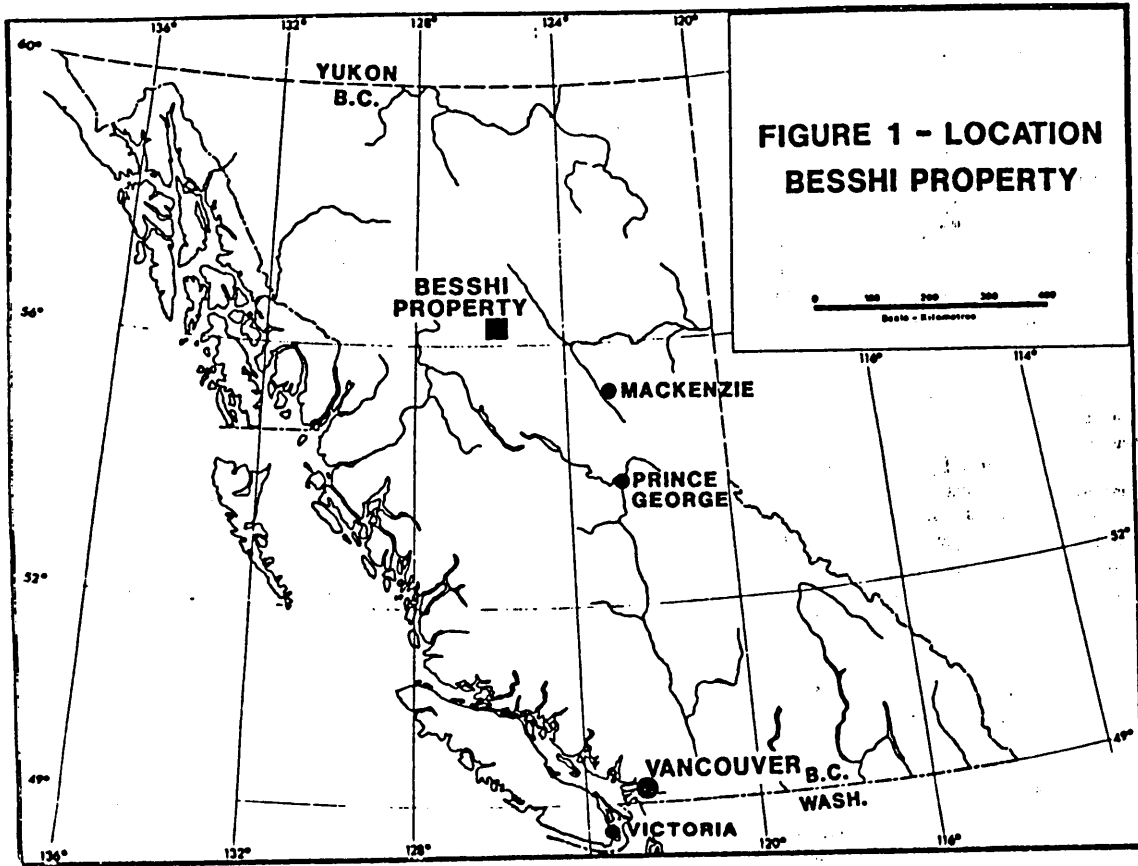
In Polaris Creek canyon, several gold, copper, and massive sulphide showings were trenched in the 1930's. Assays of up to 65 oz. gold/ton were obtained from a strata-like zone of quartz and carbonate veins within a 6 by 3-meter zone estimated to average 0.11 oz. gold/ton. One hundred meters above these showings a sulphide-rich zone assayed 3.5% copper, 0.06 oz. gold/ton and 0.51 oz. silver/ton across 0.6 meters.

Dentonia plans an airborne geophysical, prospecting and geochemical program in 1993 at a cost of \$50,000.

94C 13  
p. 10 f2

# DENTONIA

Resources Ltd. VSE - DTA



*George Cross News Letter*

*"Reliable Reporting"*

WESTERN CANADIAN INVESTMENTS

NO. 5 (1993)  
JANUARY 8, 1993

94C

13

P.20f2