

896705

Nicola

Porcupine Grip.
Corbett Lake
1963

Rock Name *vitric tuff.*
Locality *Porcupine Group, Aspen Grove.*

Serial No. *1706*
Field No. *MCK 63-193*

Occurrence

Megascopic

Microscopic *angular vitreous frags with swarms of crystallites
in a dusty matrix. frags color from colorless
to grey to red.*

MINERALS

Approx.
per Cent.

Cut on Dotted
Line to Make
Clip for Section

Analyst

Date

J.W.M.

9/12/63



Rock Name *Basalt.*

Serial No. *1707*

Locality *Porcupine Group, Aspen Grove*

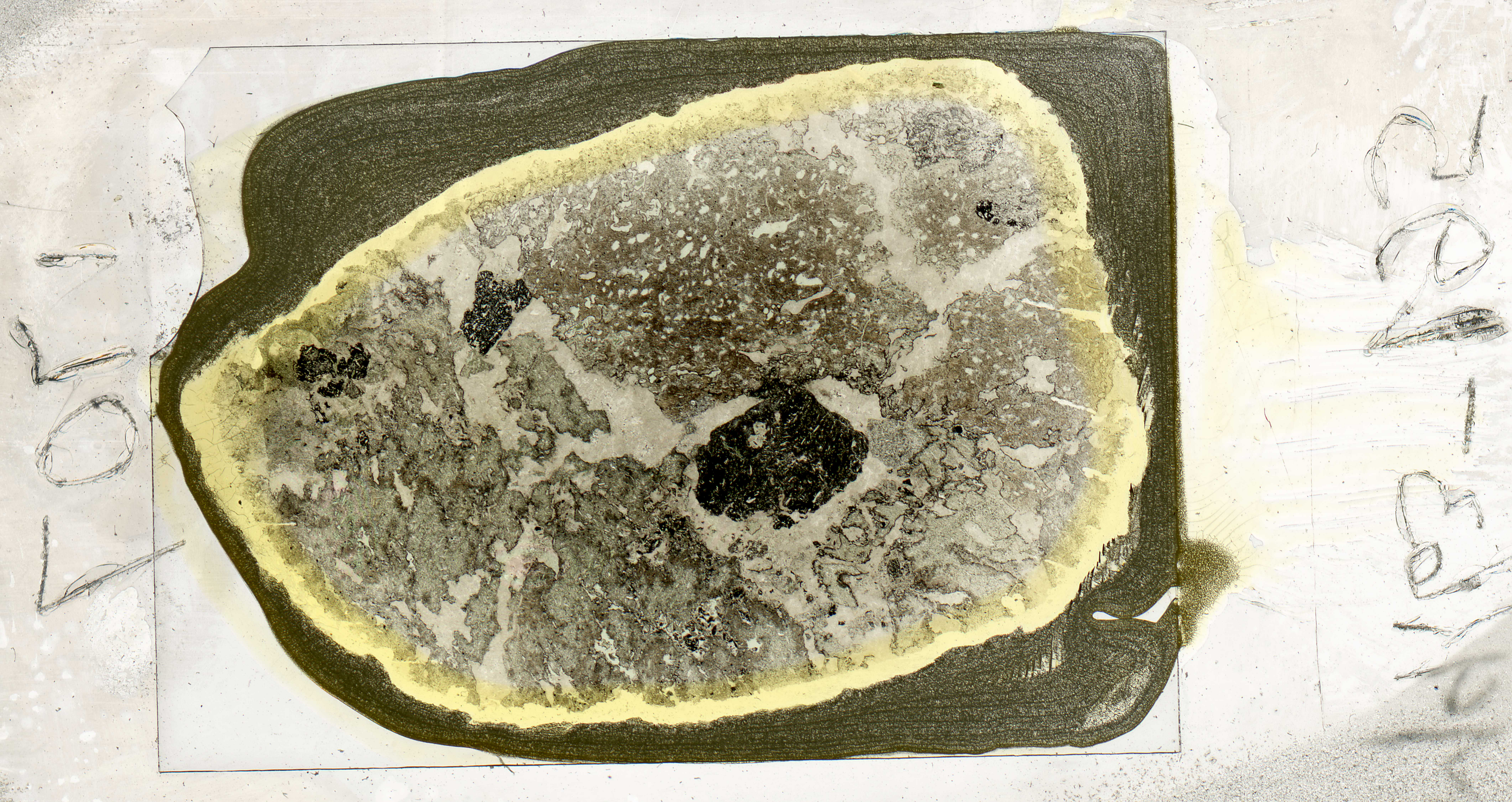
NDM Field No. *MK-63-195*

Occurrence

Megascopic

Microscopic *zeolite as amorphous and as very masses. Obsidian has
masses of olivine. Ferromagnesian too fine to
determine.*

MINERALS	Approx. per Cent.	Cut on Dotted Line to Make Clip for Section	Analyst	Date
<i>zeolite obsidian feldspar laths chlorite black of pyroxene.</i>			<i>JDM.</i>	<i>9/2/63</i>



Rock Name *basalt, alt^d*

Serial No. 1708

Locality *Porcupine Group, Aspen Grove*

NDM Field No. *MEK63-198*

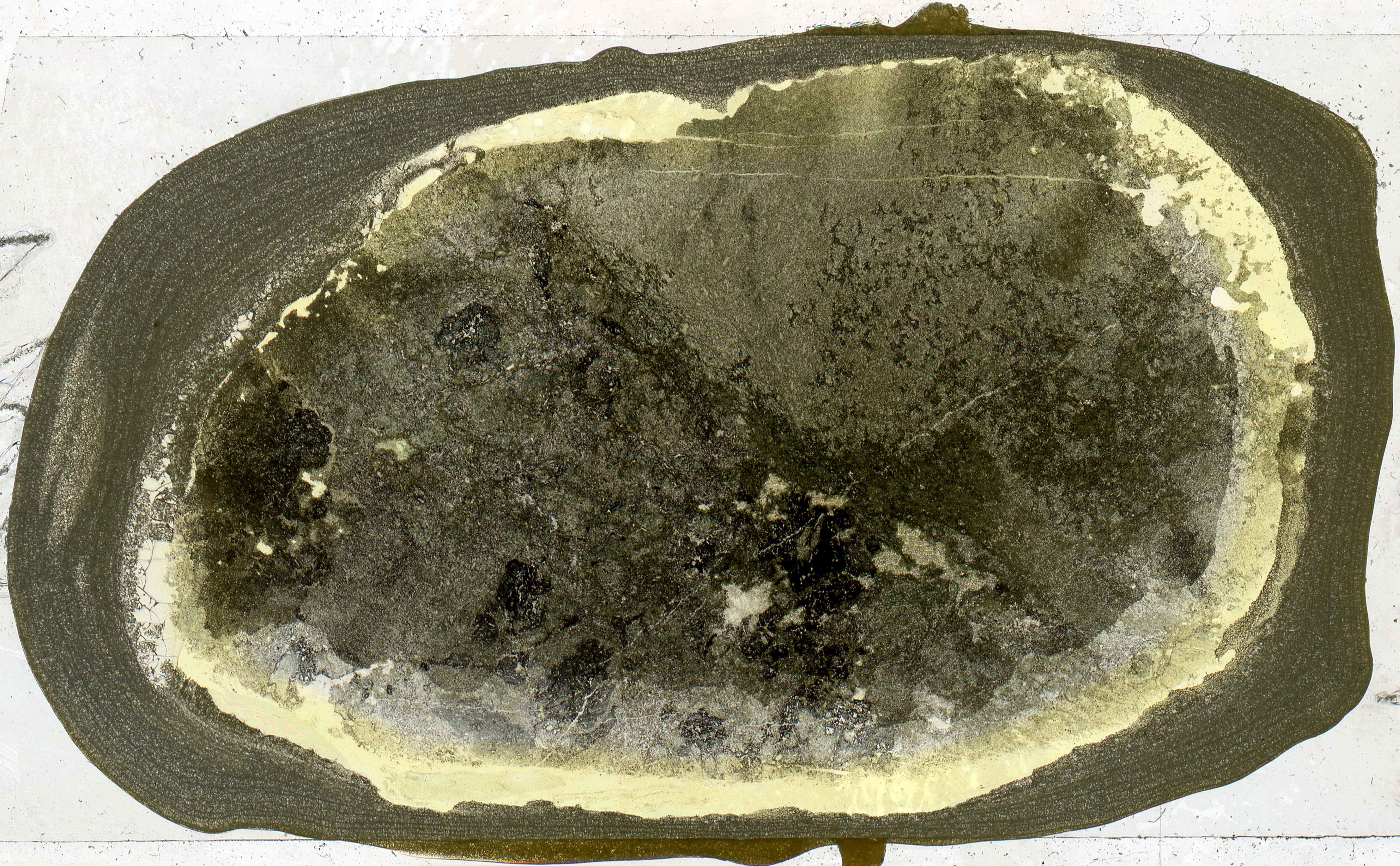
Occurrence

Megascope

Microscopic

ferromag almost wholly alt^d to chlorite and calcite; obsidian includes swarms of feldspar laths. remainder matrix of feldspar laths in alt^d ferromag.

MINERALS	Approx. per Cent.	Cut on Dotted Line to Make Clip for Section	Analyst	Date
<i>obsidian feldspar chlorite calcite</i>			<i>NDM.</i>	<i>9/12/63</i>



Rock Name *amys. basalt, alt?*

Serial No. *1709*

Locality *Porcupine Group, Aspen Grove.*

NDM Field No. *1963-201*

Occurrence

Megascopic

Microscopic *small feldspar laths in matrix of chlorite with flakes of calcite. Amygdules are zeolite or calcite, or both; where both are present the calcite forms a rim around the zeolite.*

MINERALS	Approx. per Cent.	Cut on Dotted Line to Make Clip for Section	Analyst	Date
<i>phyric chlorite calcite zeolite black pyrite.</i>			<i>NDM.</i>	<i>9/12/63</i>

