





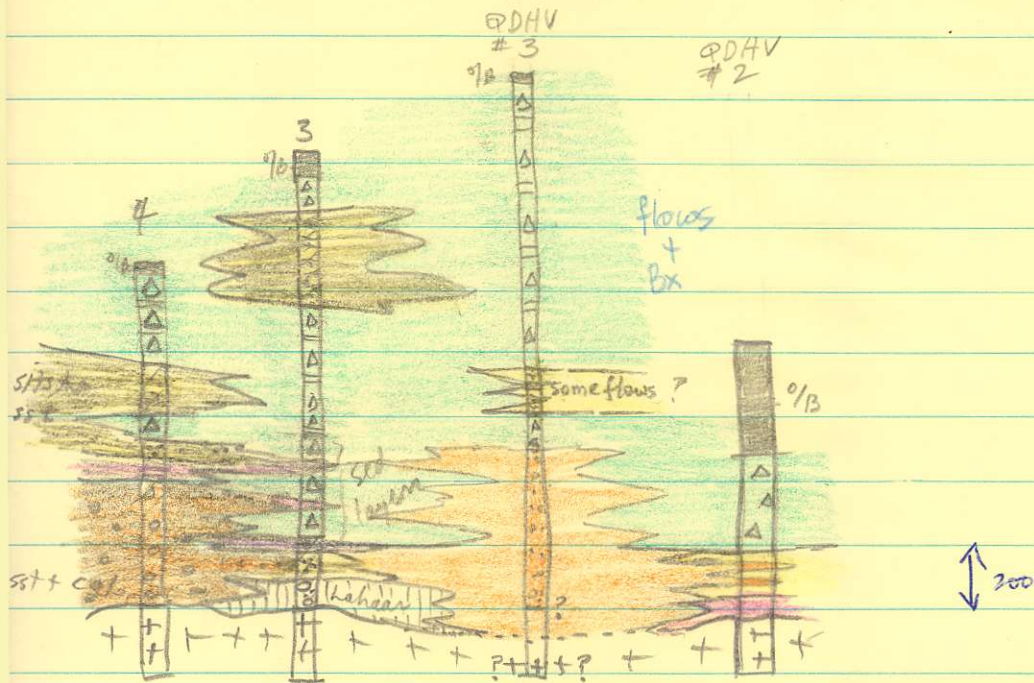
Generalized

Quentona Drilling

(a) Guichon overlain by:

75' bx flow
 predom. seds 750' (#4); 210' Bxs + flows 400' (#3)
 give way upward to
 Bx + d volcs 260' (#4); 125' (#3)

- volc bx + flows 
- sst 
- pebbly sst/cgl 
- siltst + fine 



Compare with
HIGHER drill
 holes! + Dark-
 hawke holes.

(b) Very marked lateral variations in lithology laterally

(c) Basal seds cgl → pebbly sst → lahar → varved clays! Variable!!

(d) ~~Some~~ Lots of ~~areas~~ have no basal seds.

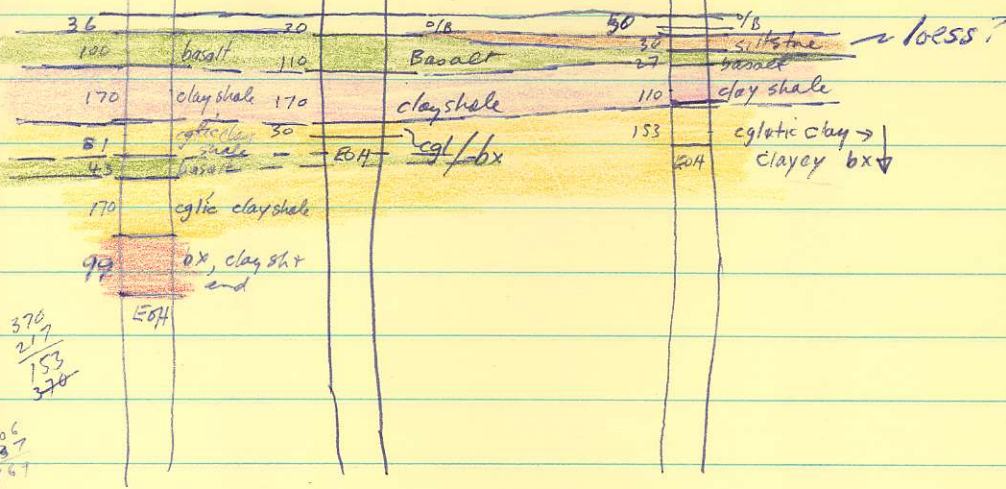
HIGH GROUP

angle hole
but thicknesses
shown are true
(assuming horiz. beds) reasonable

#3

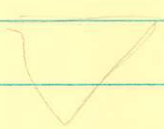
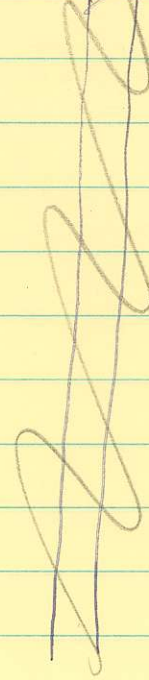
#1

#2



370
217
153
370

306
137
169



Kamloops Gp

Dry + MCT

DK often scoriaceous basalt flows + bxs, andesites
assoc tuff + ag
flow lines common, some flows ppytic

NW slope of Glossy Mtn rhy + and.

ppytic Rhyolite uncon on shales on Hill west of Barnes Lk

Tranquille Beds

Cockfield sh sst cgl w-tuff thin lignite seams
some volcanic interbeds

Red lake - poorly exposed diatomite
age possibly oligo or lower miocene
plants, some fish

conformable with under + overlying units rx
is an a "formation" in the Kamloops Gp

Coldwater

Cockfield sst sh cgl with seams of coal

Dawson meas. 424' in Coal Gulley sw of Merritt
Middlesboro collieries

770' fm base of #1 to base of #2 seam

Uncon. over Nicola

" under (?) Tertiary volcs.

Coldwater profoundly disturbed

Age at that time Oligo or lower Miocene (Bell)

Allen Rouse

Plant Fossils

"Paper" wash out

K-Ar mid-Eocene Top $\left\{ \begin{array}{l} 47.6 \pm 1.6 \\ 46.6 \pm 1.6 \end{array} \right.$

Visit?

On Road $\{ 46.8 \pm 1.5$



~~Mid~~ Eocene, ~~Early~~ \rightarrow Oligocene mixture

Quesnel Kam

Sav. Mtn 45 ± 2

Shorts Ck w of Vernon 47

Princeton Rock Ck

Kettle R. Endako 48-53

- Nacosti'

(S of Quesnel) 42 ± 2

under Early Oligocene