

- BN ≥ CPY

pyrite

C > B  
Chalcopyrite > Bornite

84 No. 52 cutting zone-like  
1255' sample

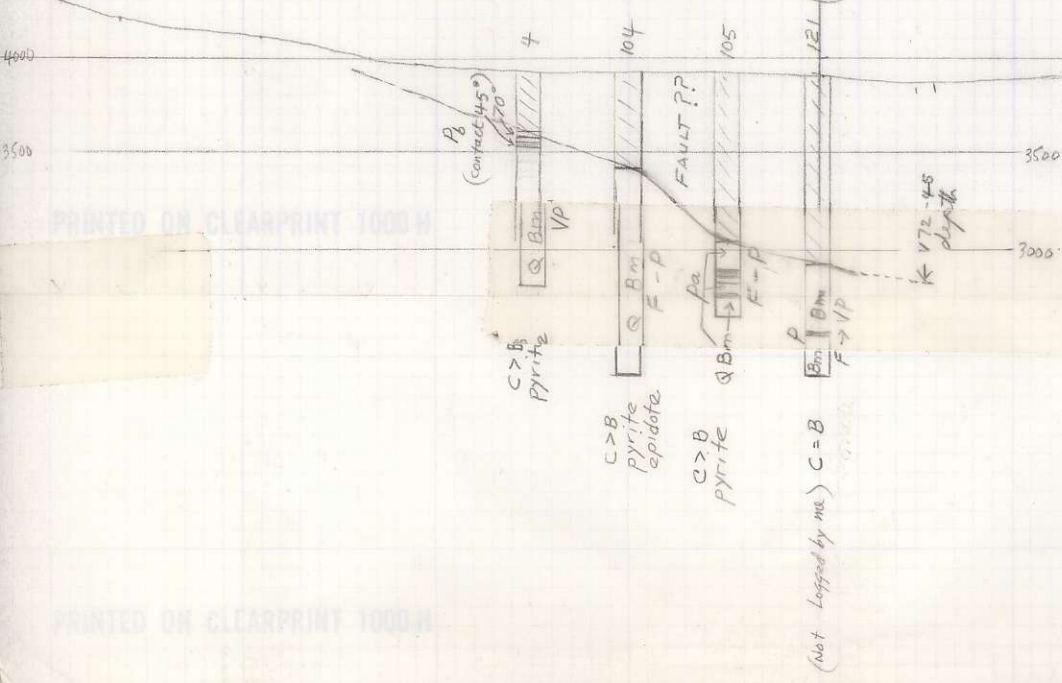
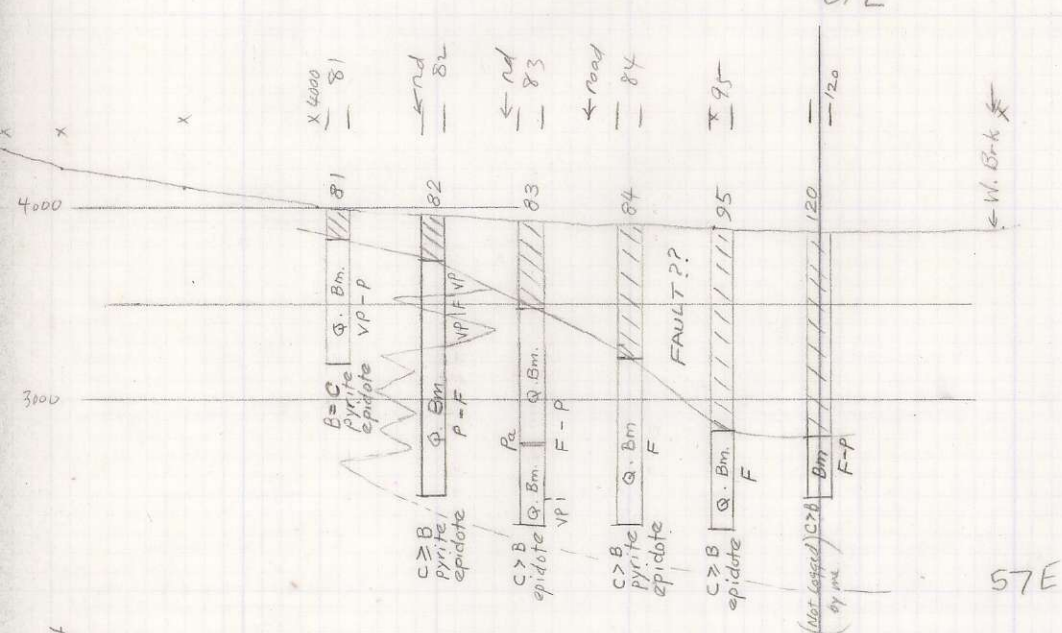
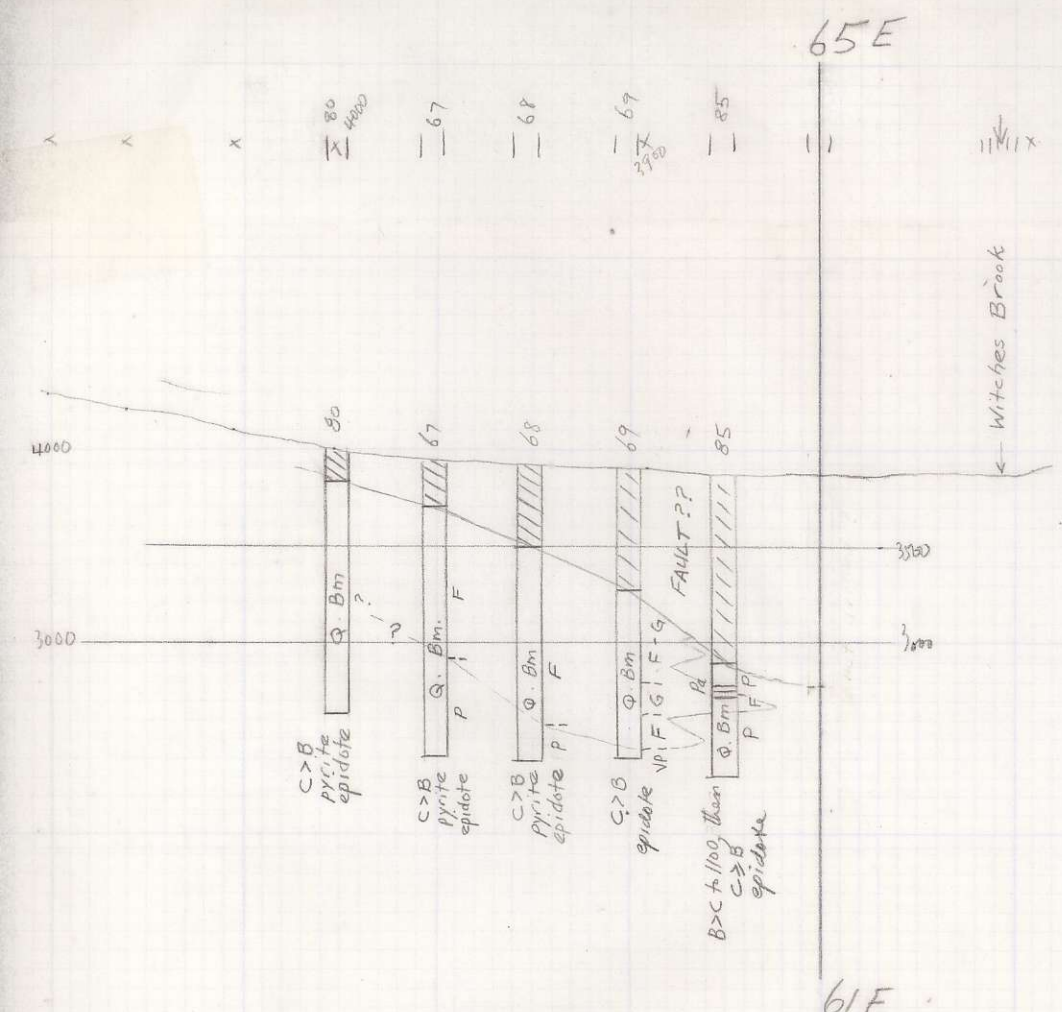
vert. scale 1" = 1000'  
Horiz scale 1" = 800'

Gypsum

- Kv Kamloops
  - Ch Chataway
  - Gf Fj Guichon
  - G4 Guichon
  - Bm Bethlehem
  - Q Bm Qiz eye Bm
- Grade
- Good > .5
  - Fair .2-.5
  - Poor .1-.2
  - v. poor < .1
- C < B: cpy < bn
- 6p Bsd ppy
  - P porphyry
  - Pa Sheba type
  - D12 Graded with type
  - Pa 9th ring apatite

(not logged by me) C=B

JA



84 Mo<sub>2</sub> cutting Zeolite  
1255' sample

vert. scale 1" = 1000'  
Horiz scale 1" = 800'

- Kv Kamloops
- Ch Chataway
- Gf fg Guichon
- Gv Guichon
- Bm Bethchem
- Q Bm Qtz eye Bm
- C < B: cpy < bn
- 6p BsdA ppy
- p porphyry
- Pa Sheba type
- D12 Gnaused Mtn Type
- Pg qtz plus apptk

Grade  
 Good >.5  
 Fair .2-.5  
 Poor .1-.2  
 v. poor <.1

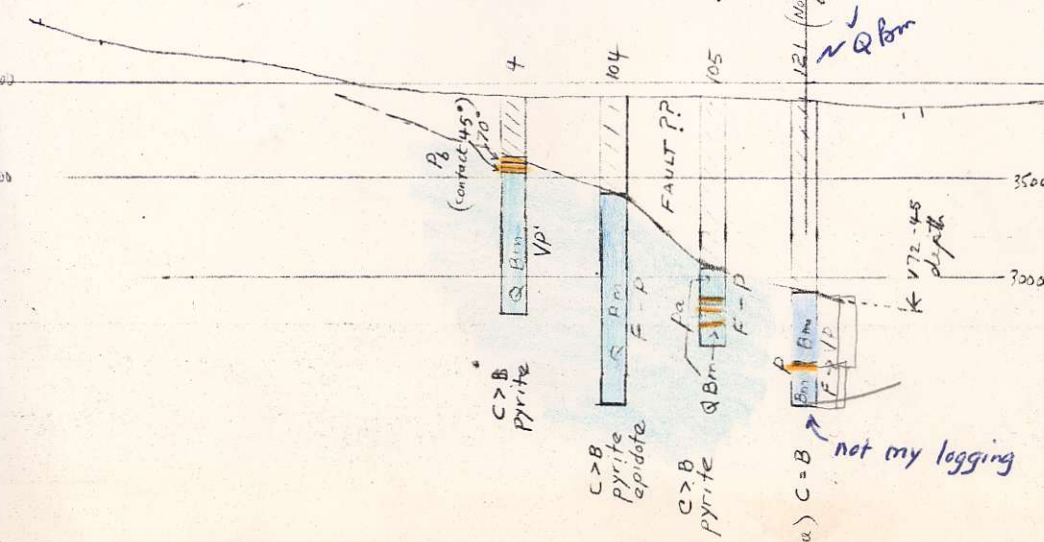
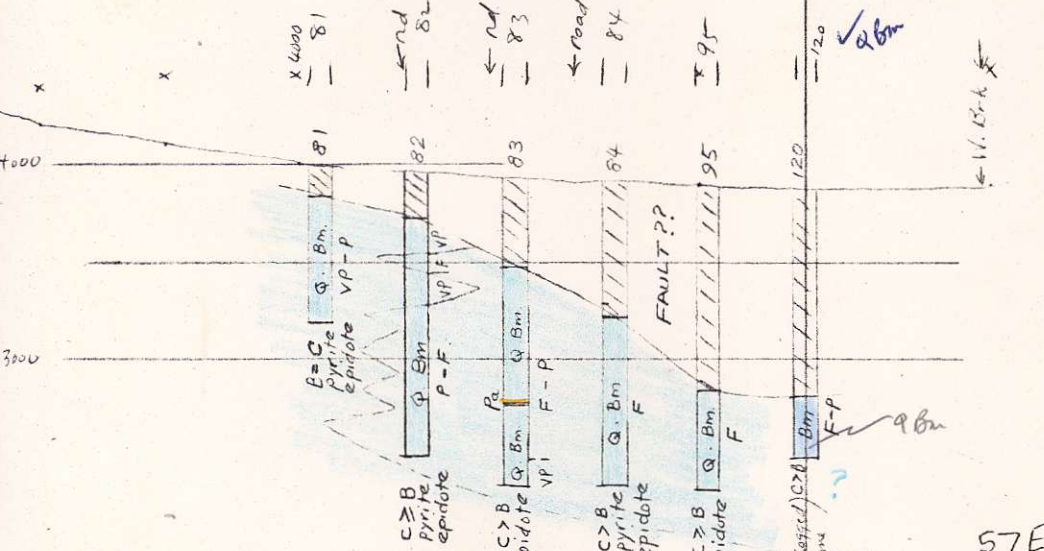
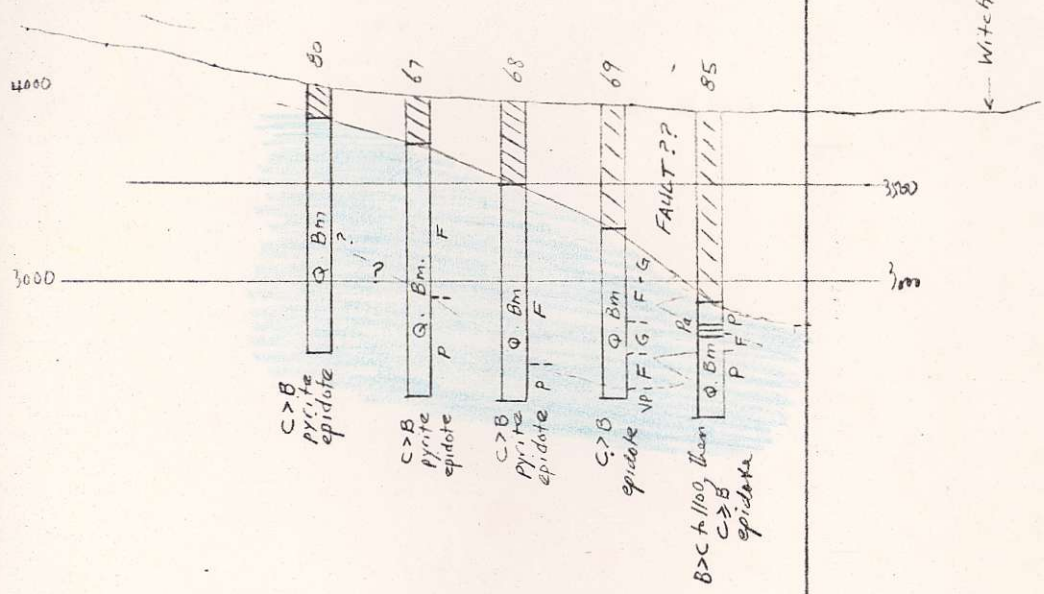
(Not Logged by me) C=B

PRINTED ON CLEARPRINT 1000W

PRINTED ON CLEARPRINT 1000W

80  
67  
68  
69  
85

65E



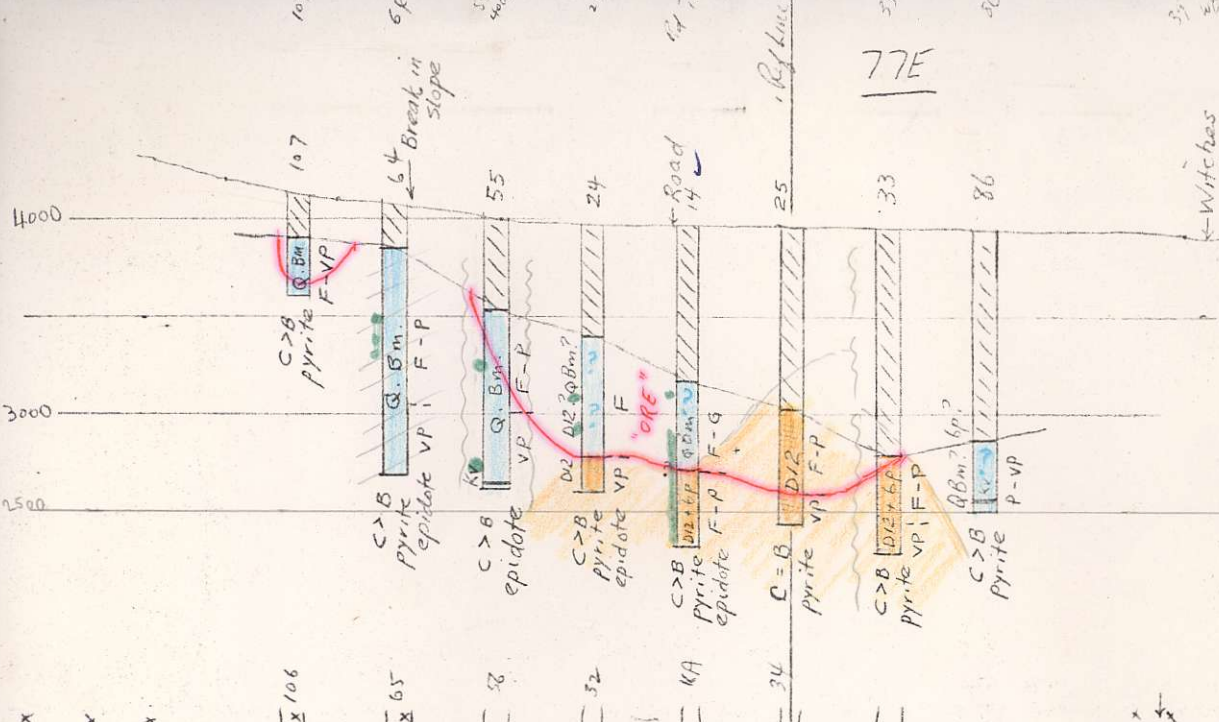
84 No. 52 cutting Bealville  
1255' sample

vert. scale 1" = 1000'  
Horiz scale 1" = 800'

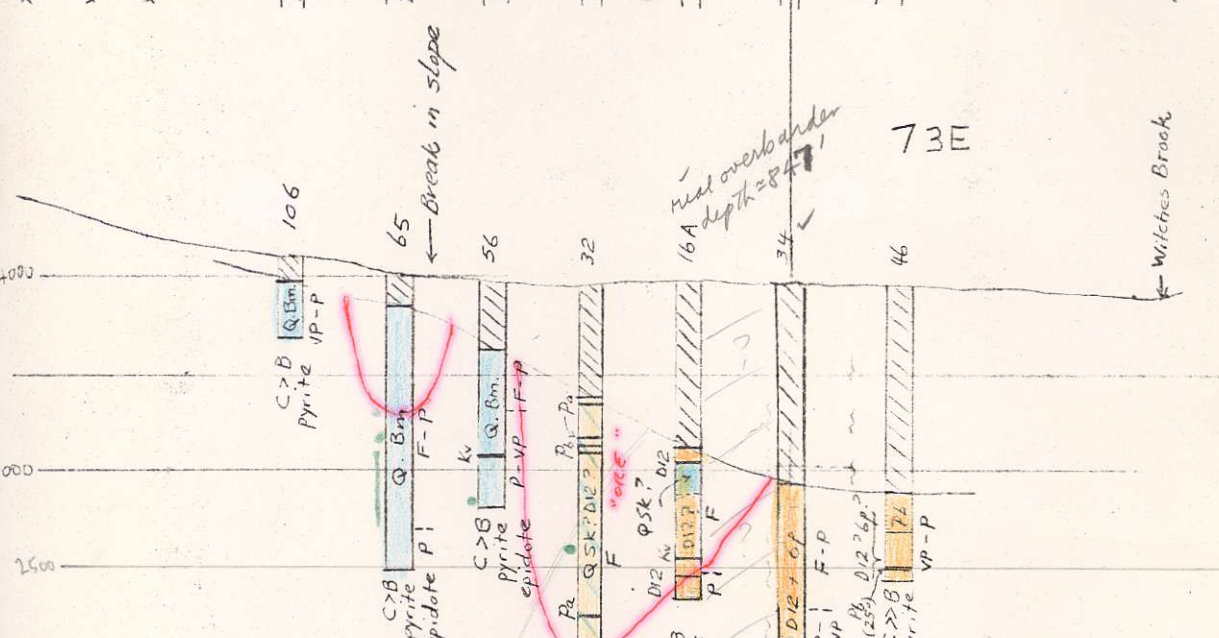
Legend

Porphyries (P)

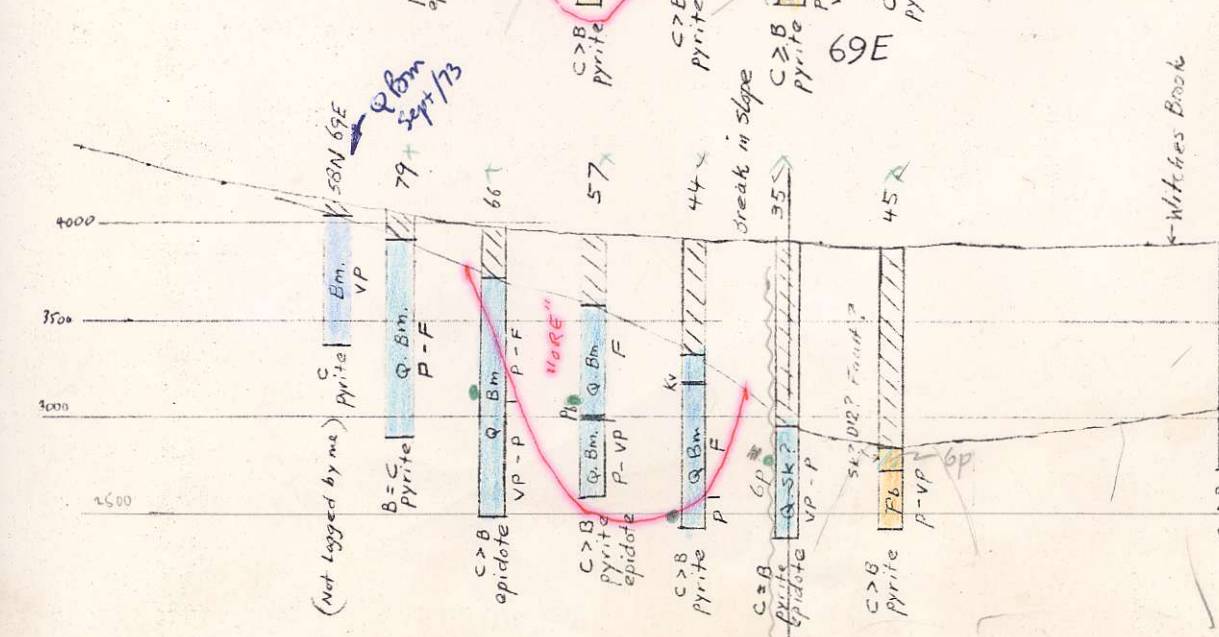
- D12 Gnawed Mtn type
- Pa - - - Shaba type
- Pb - gtz plag aplite
- bp - Bethesda PPT
- Kv Kam loops
- Ch Chataway
- Gr fg Guichon
- Gv Guichon
- Bm Bethshem
- Q Bm Qtz eye Bm



77E



73E



69E



(Not logged by me)

58N 69E

Q Bm Sept/73

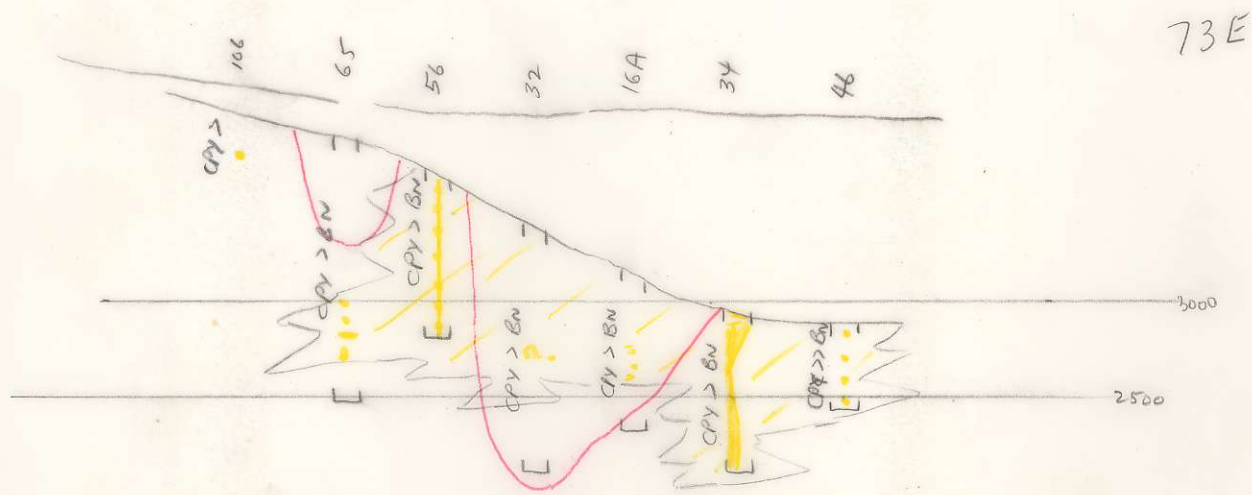
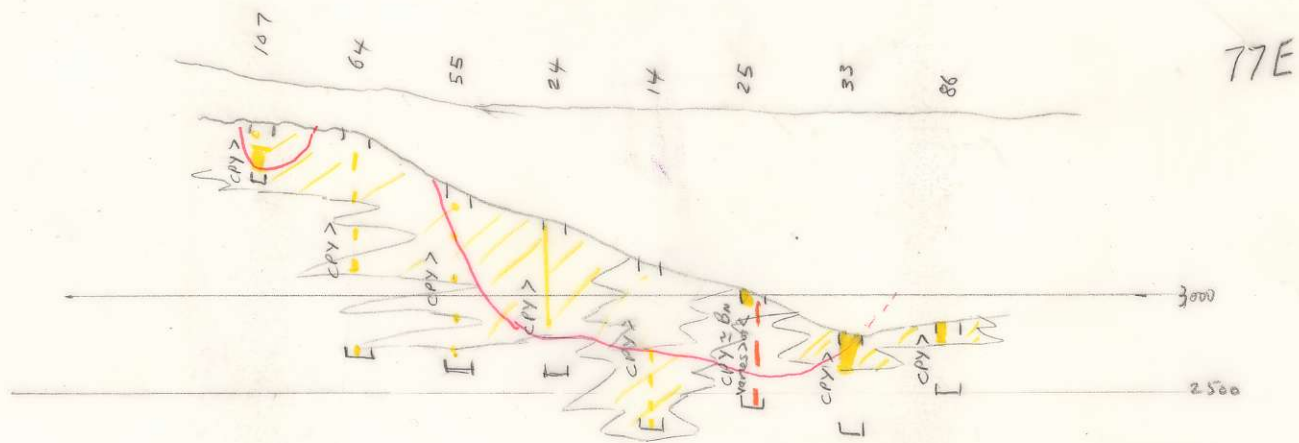
• Gypsum

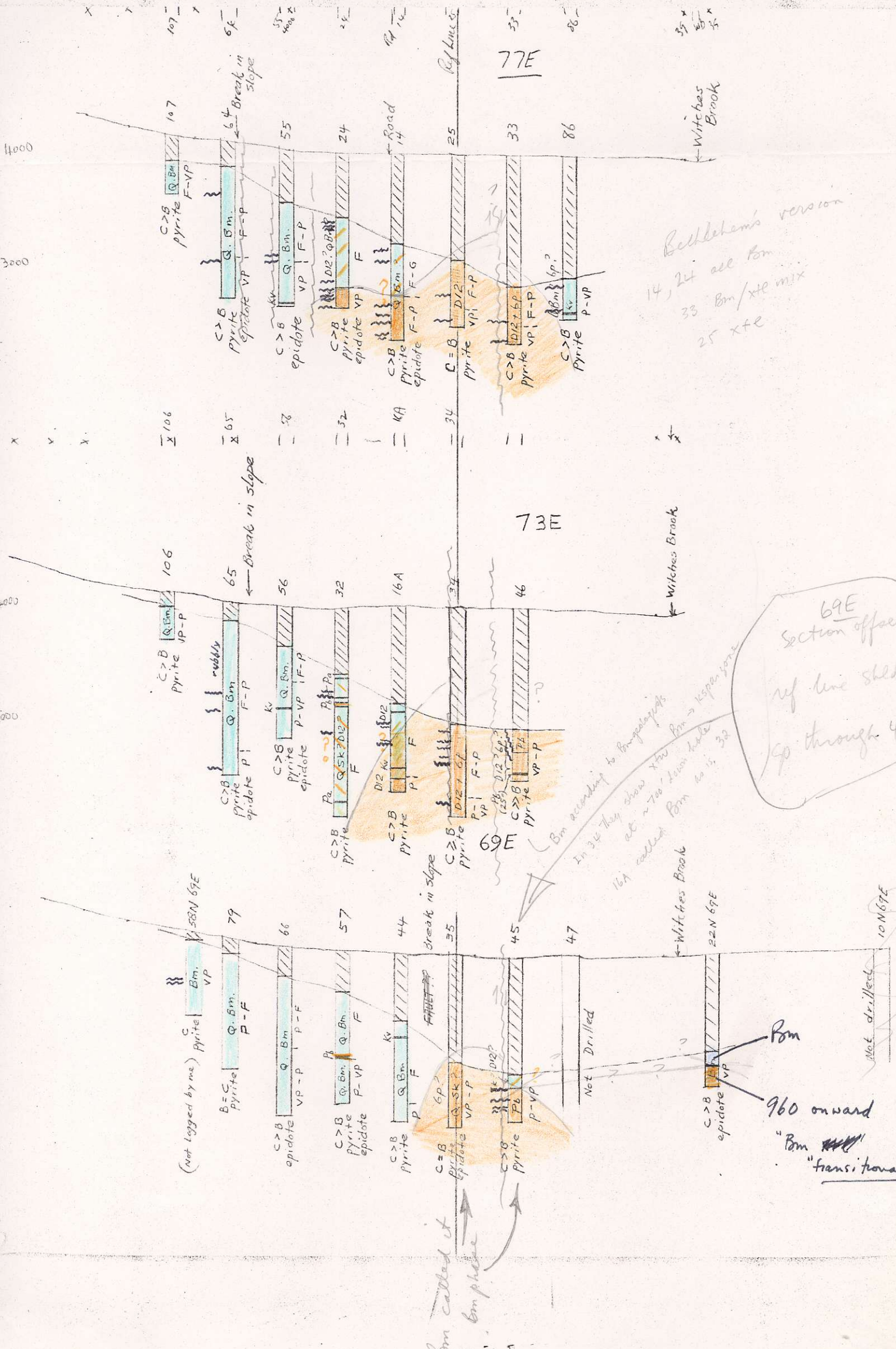
Q Bm (Sept/73)

Ref line shall be thru 45

Witches Brook

22N 69E





Beckheim's version  
 14, 24 all Bm  
 33 Bm/xte mix  
 25 xte

69E  
 Section offset  
 ref line shld  
 go through 45

Bm according to Bergquist  
 In 34 they show xte Bm → response  
 at ~700' down hole  
 16A called Bm to it, 32

Bm  
 960 onward  
 "Bm"  
 "transitional"

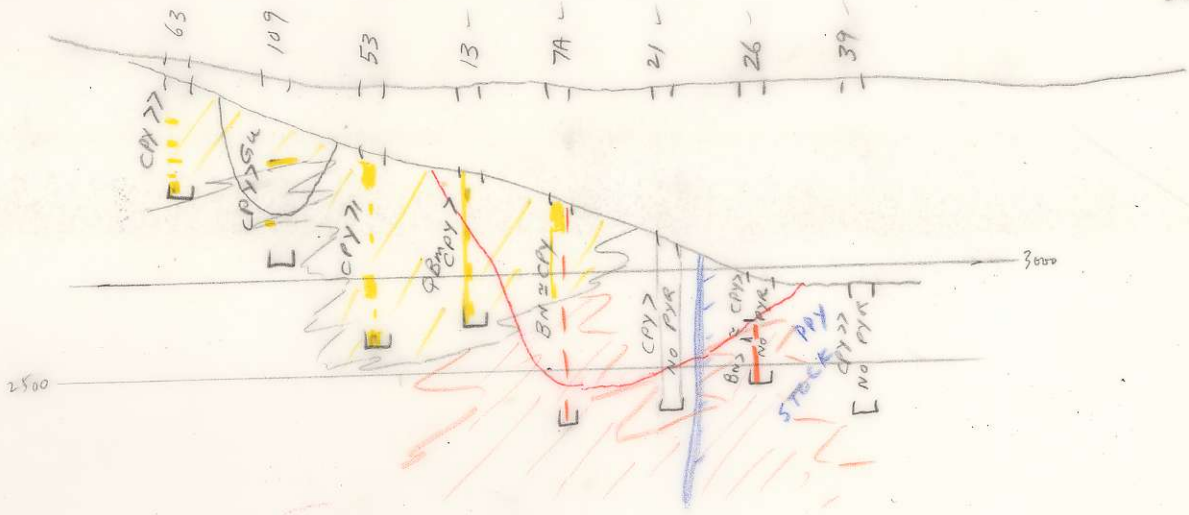
Bm called it  
 Bm phase

(not logged by me)

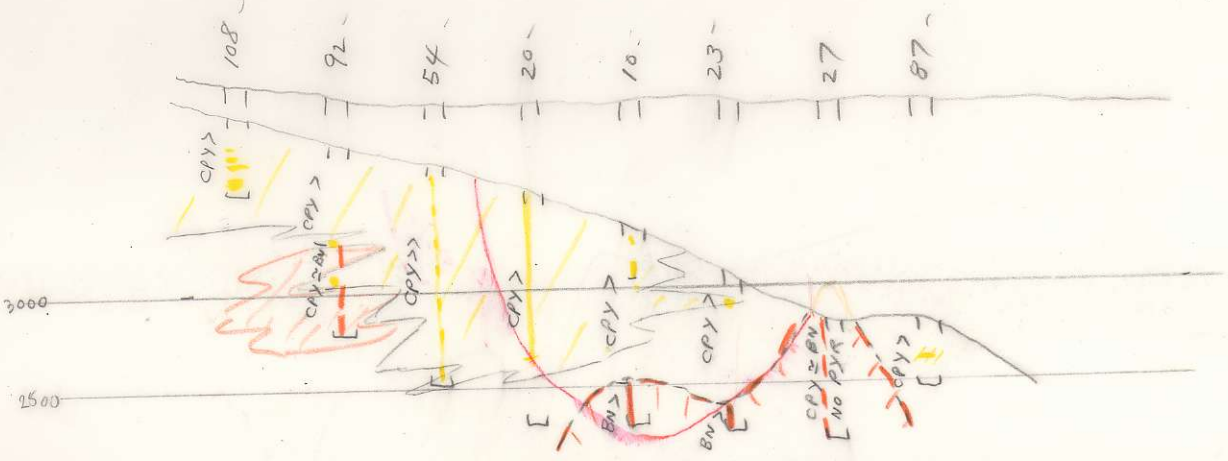
Not drilled

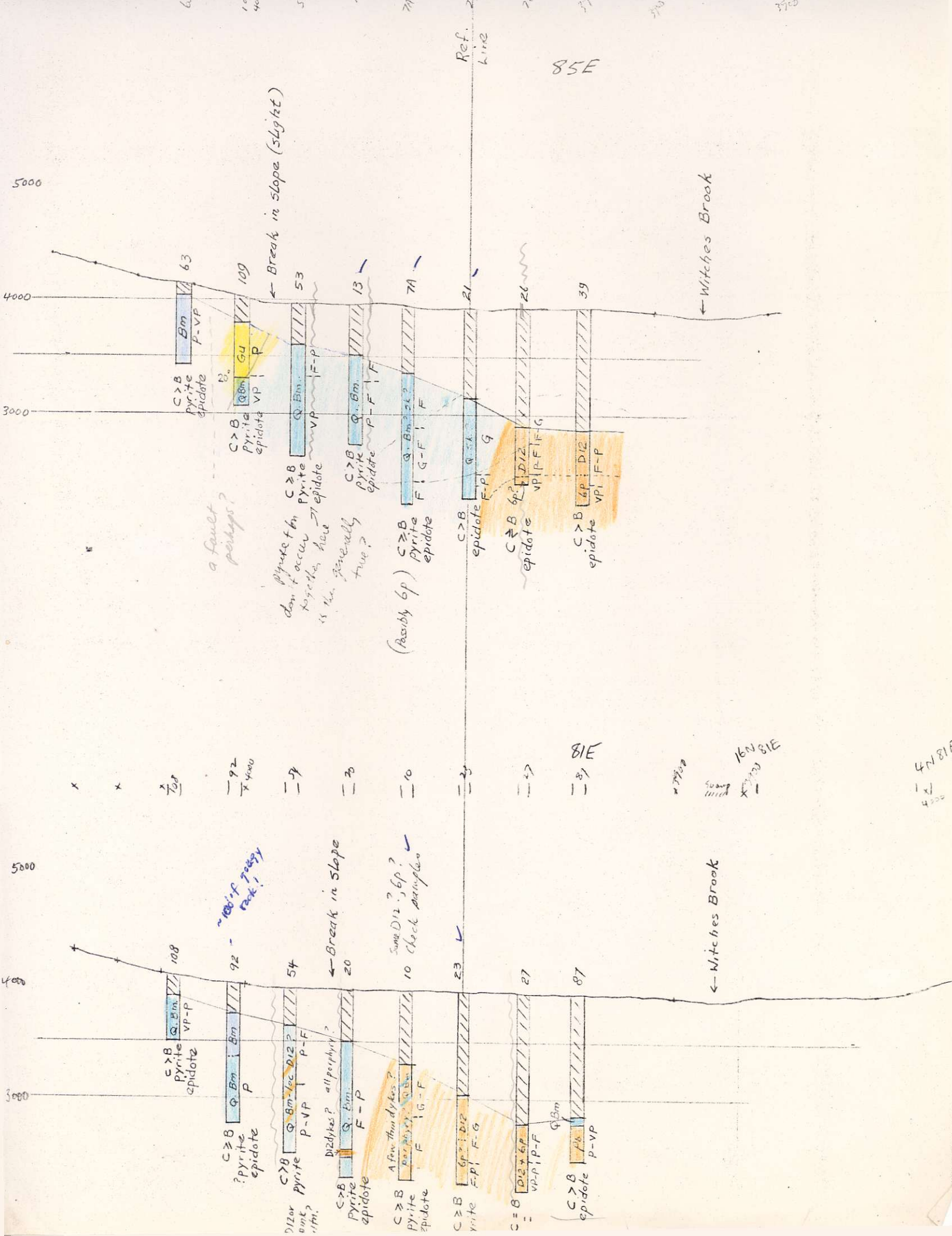
Not drilled

85E



81E





5000

4000

3000

Ref. Line

85E

← Witches Brook

63

Bm  
P-V-P

C > B  
Pyrite  
epidote

109

Q.Bm  
G.U  
P

C > B  
Pyrite  
epidote

← Break in slope (slight)

53

Q.Bm  
VP

C > B  
Pyrite  
epidote

13

Q.Bm  
P-F

C > B  
Pyrite  
epidote

7A

Q.Bm  
F-G-F

C > B  
Pyrite  
epidote

21

Q.Bm  
F-P

C > B  
epidote

26

D12  
VP-F-F-G

C > B  
epidote

39

D12  
VP-F-P

C > B  
epidote

a fault perhaps?

Pyrite + km  
don't occur  
together here  
is this generally  
true?

(Possibly 6p)

5000

4000

3000

← Witches Brook

108

Q.Bm  
VP-P

C > B  
Pyrite  
epidote

92

Q.Bm  
P

C > B  
Pyrite  
epidote

~ 1000' of gneiss  
rock?

54

Q.Bm  
P-V-P

C > B  
Pyrite  
epidote

← Break in slope

20

Q.Bm  
F-P

C > B  
Pyrite  
epidote

Some D12, 6p?  
check samples

23

Q.Bm  
F-P

C > B  
Pyrite  
epidote

27

D12  
VP-P-F

C > B  
epidote

87

Q.Bm  
P-V-P

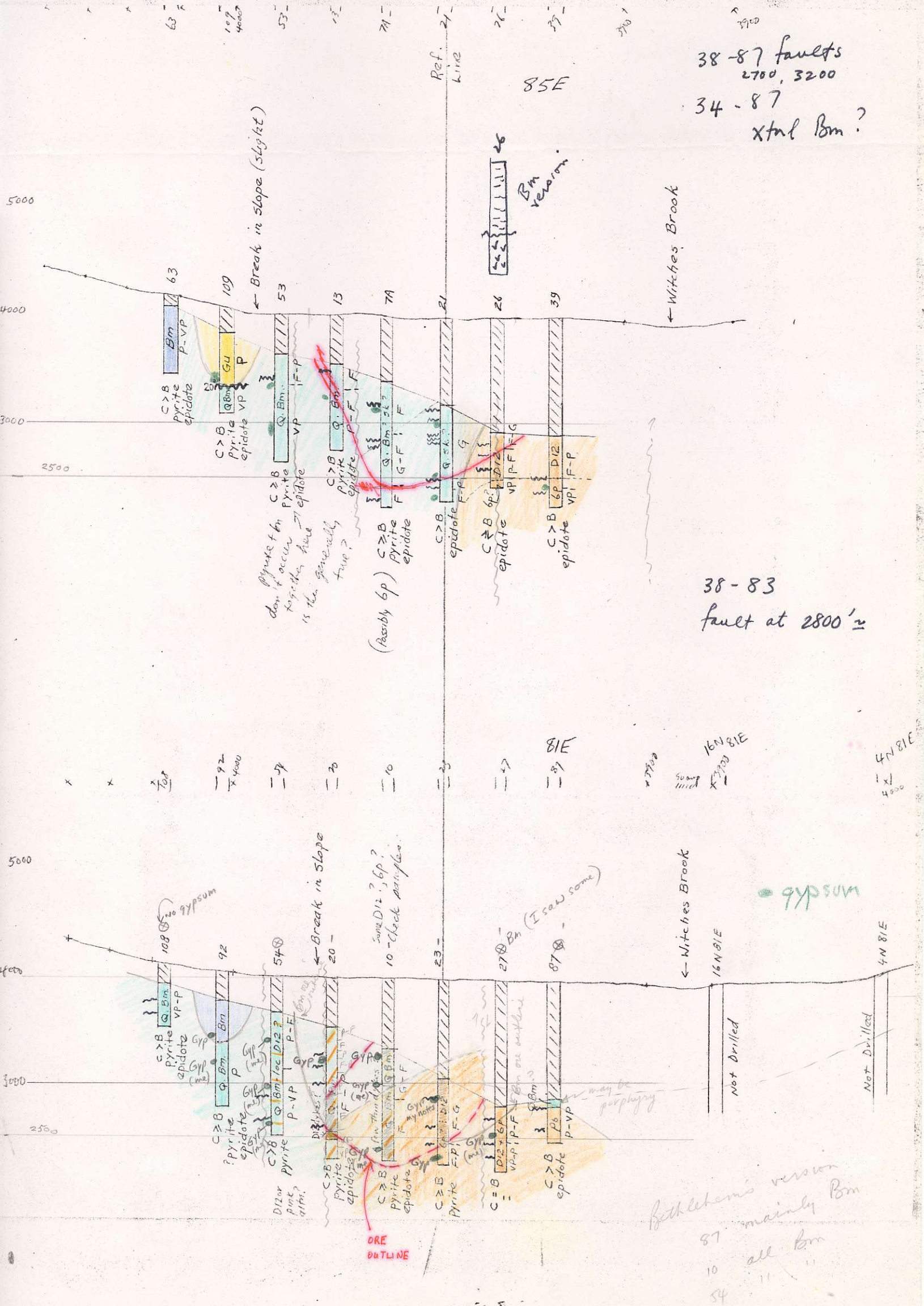
C > B  
epidote

81E

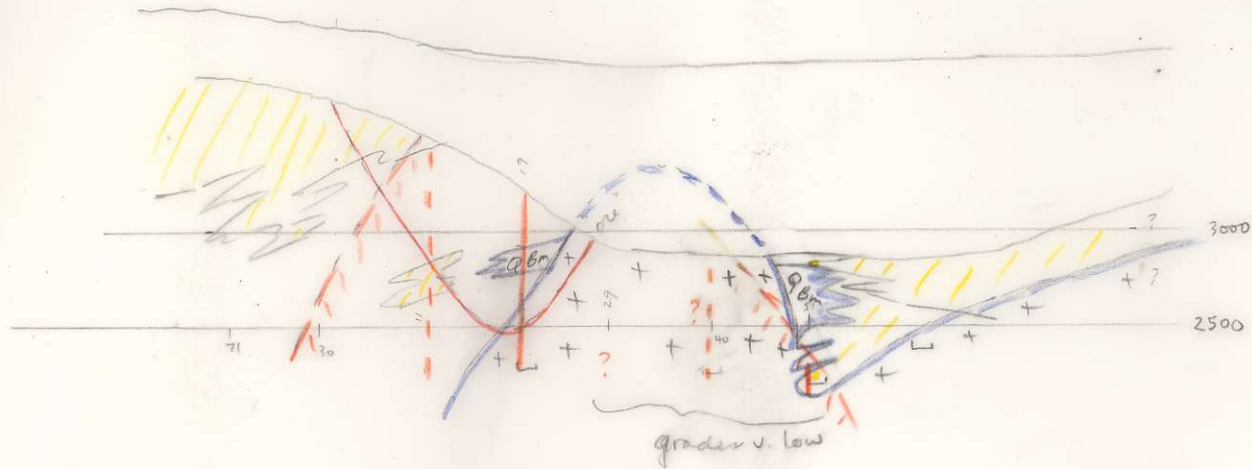
16N 81E

4N 81E





93E



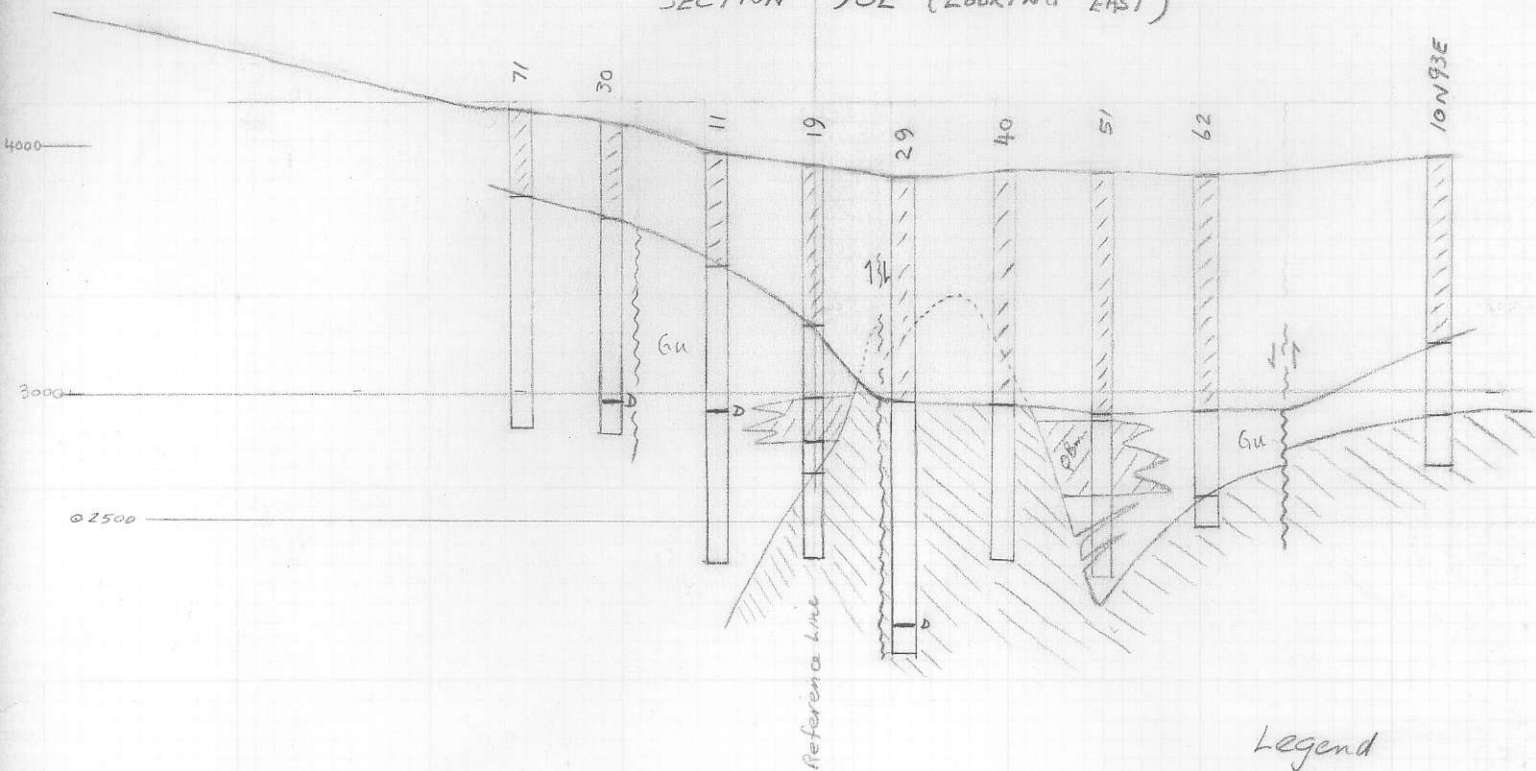
Pyn  
 250-320  
 470  
 510-640  
 locally  
 710  
 760  
 850-80  
 W-N  
 W

Pyrite  
 (Cpy/Bn) Distns  
 GRADE

93E  
 10N93E



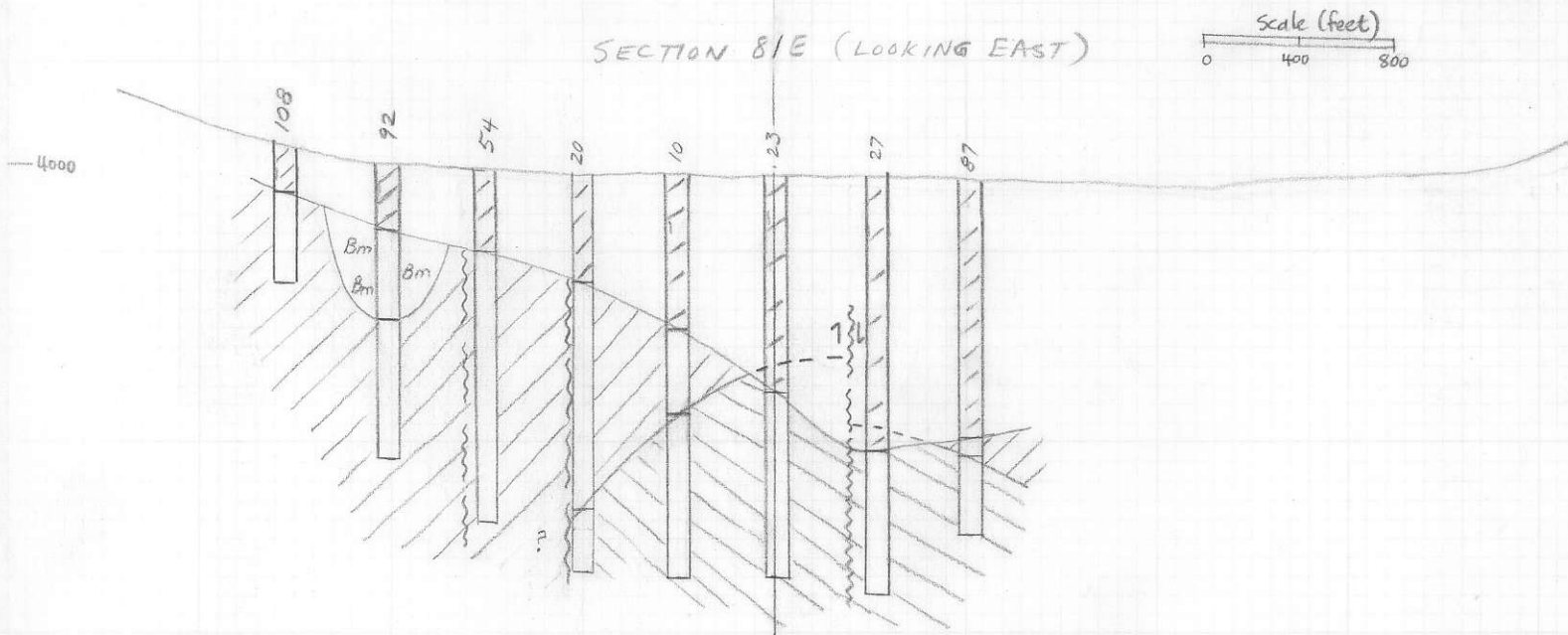
SECTION 93E (LOOKING EAST)



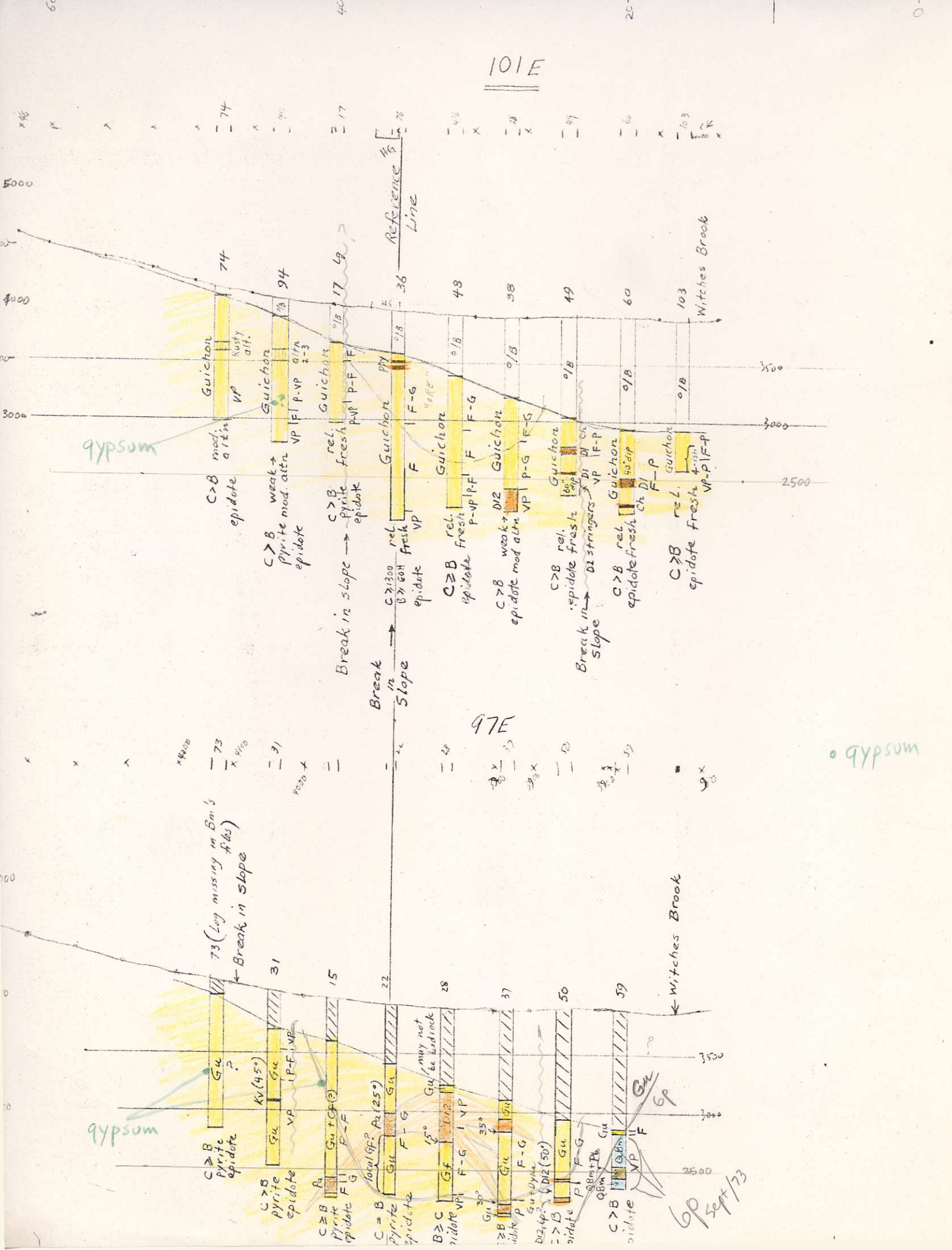
Legend

- Guichon variety
- Bethlehem phase with
- Bm "quartz "eyes"  
- no quartz eyes
- Quartz plagioclase aplite
- D Dark gray dykes
- Fault, inferred

SECTION 81E (LOOKING EAST)



WJM 7 Geological cross sections of the J.A. deposit. Location of sections shown on Figure WJM 6

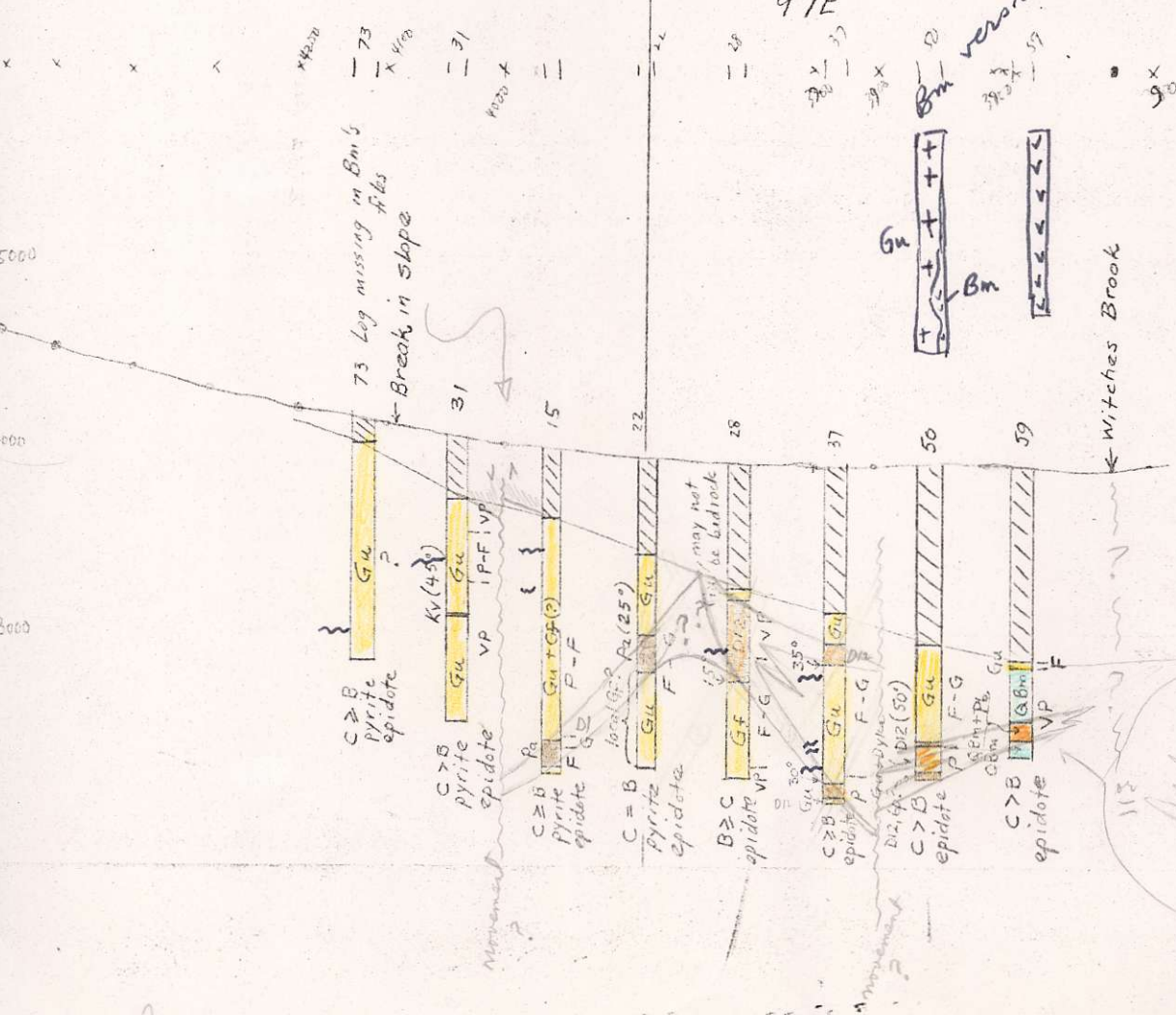
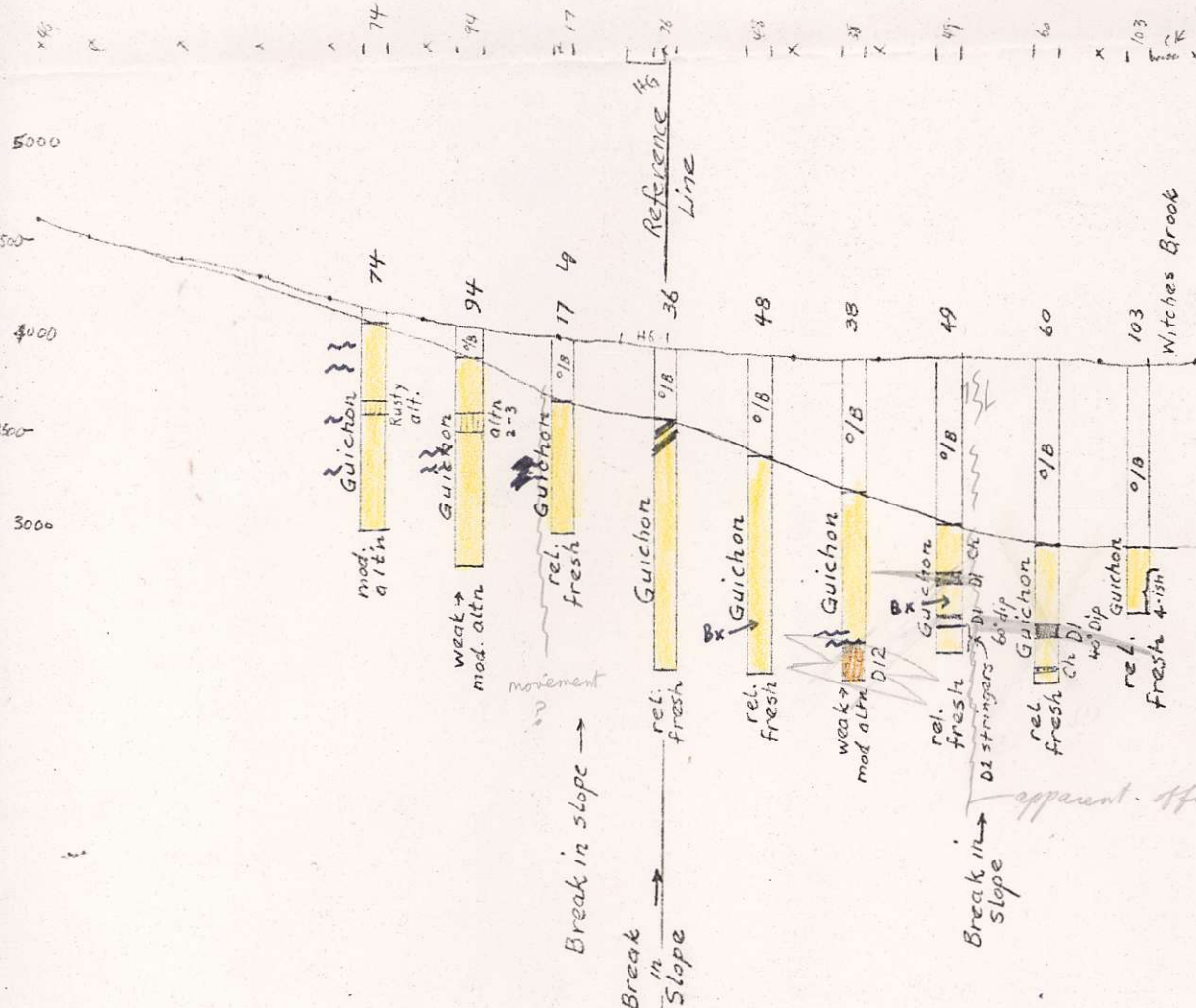
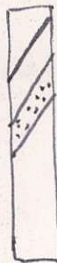


6p Sept/73

101E

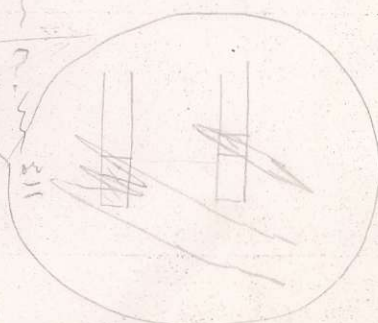
38-103

34-103  
Gu



38-99

34-99  
30-99  
Guichon

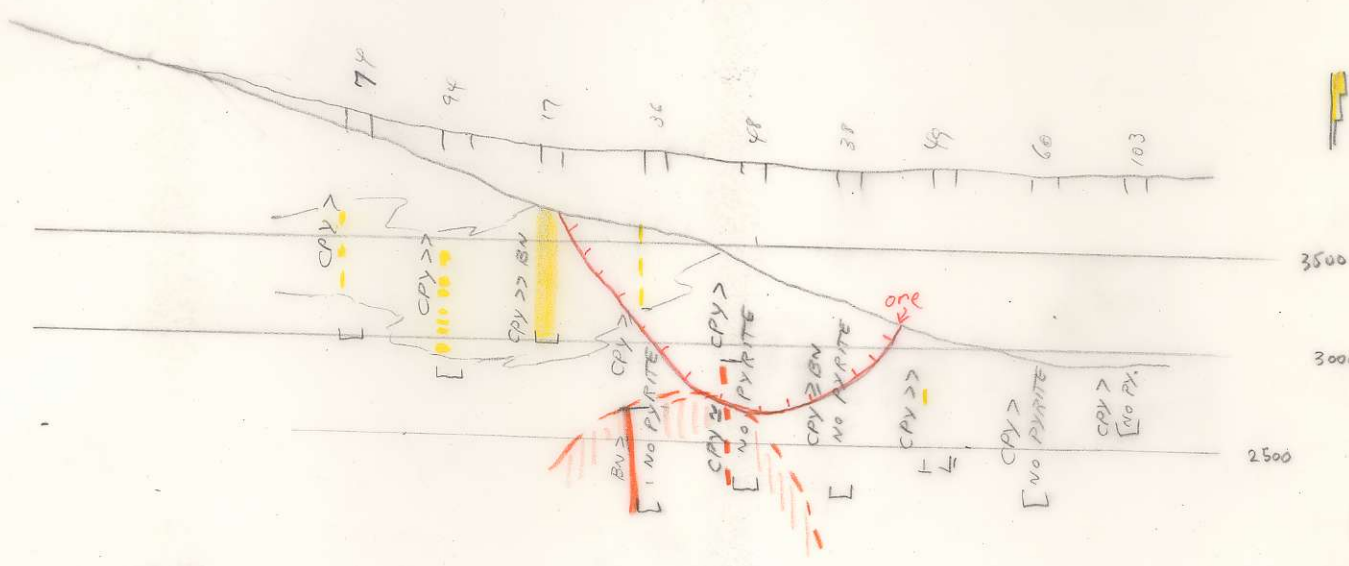


97  
101  
105

101E

PYRITE  
CPY / BN DISTN

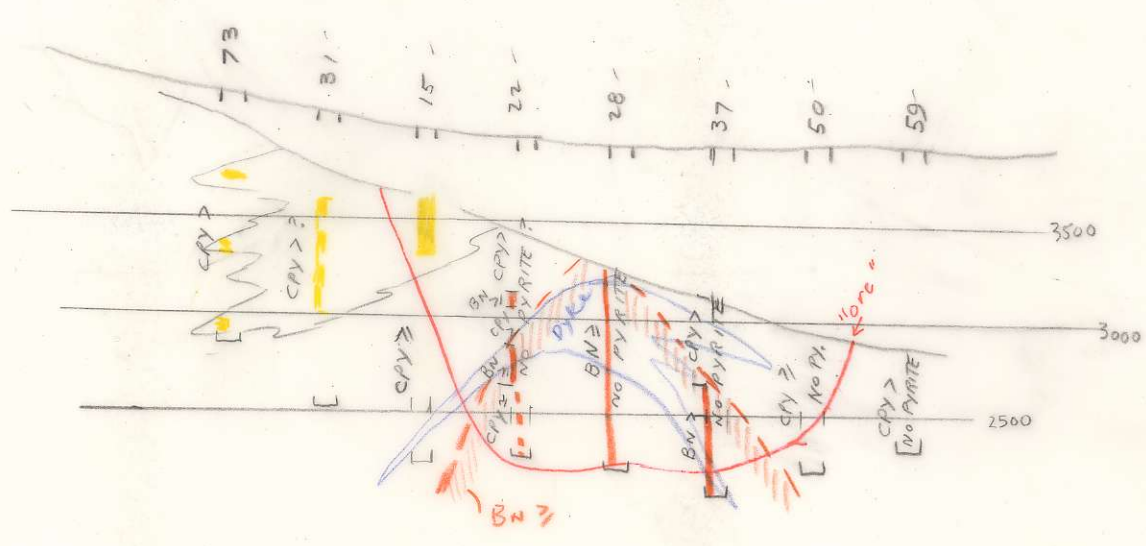
S  
M  
W Pyrite

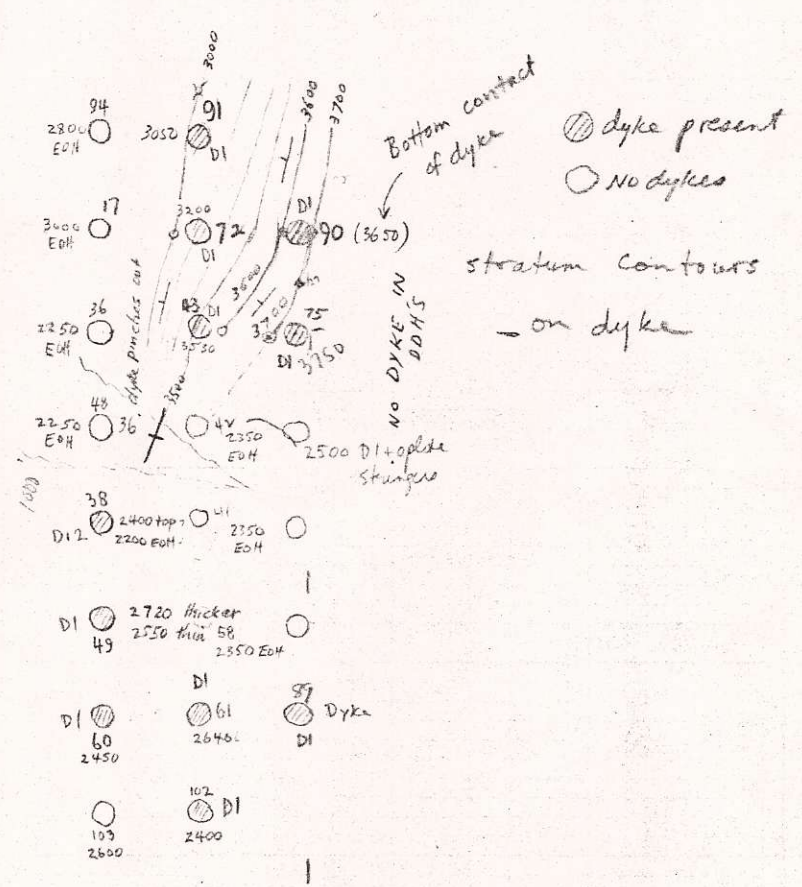
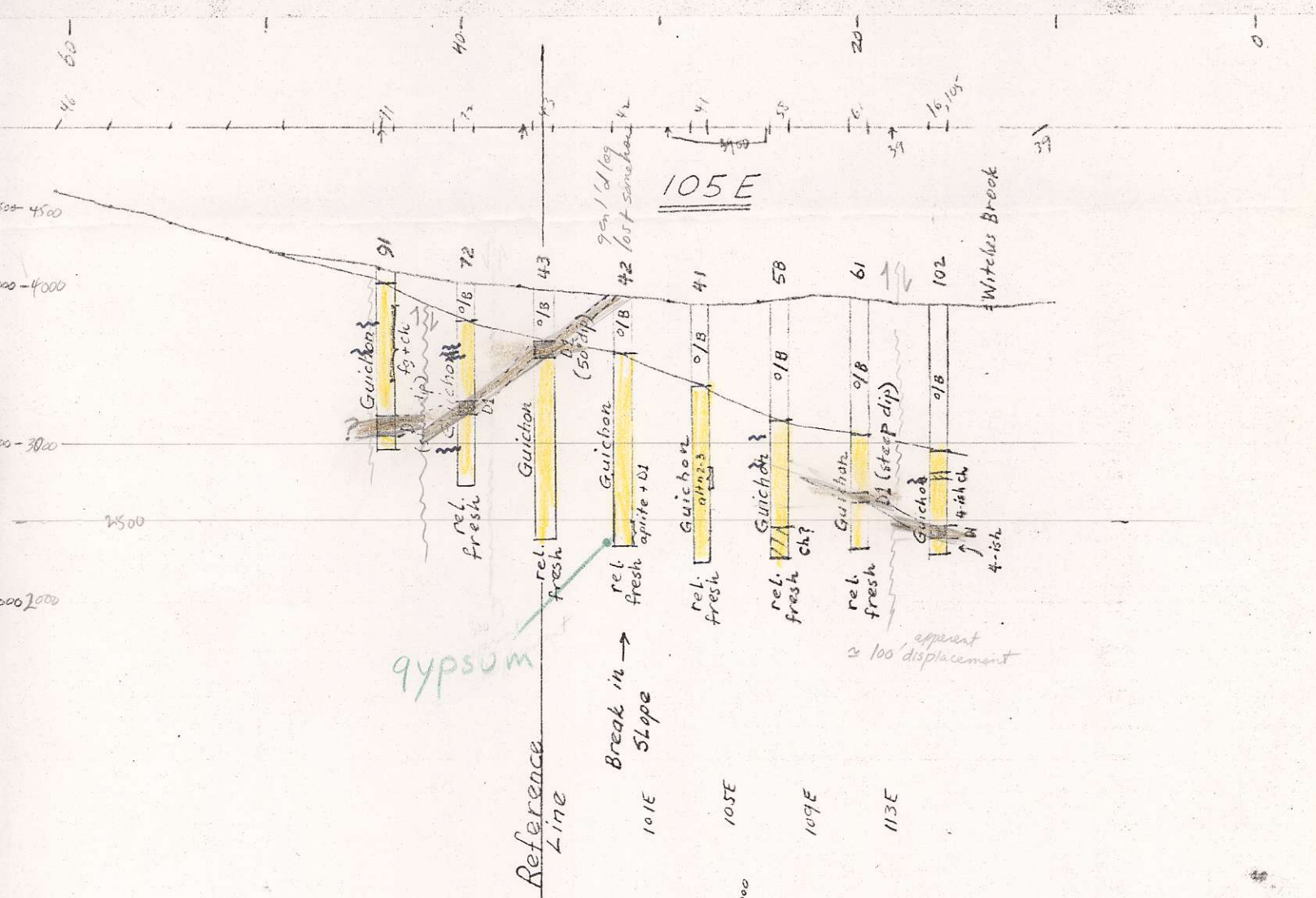


Horiz 1" = 800'  
Vert 1" = 1000'

47 Pyrite in DI (and ahead of it)

97E

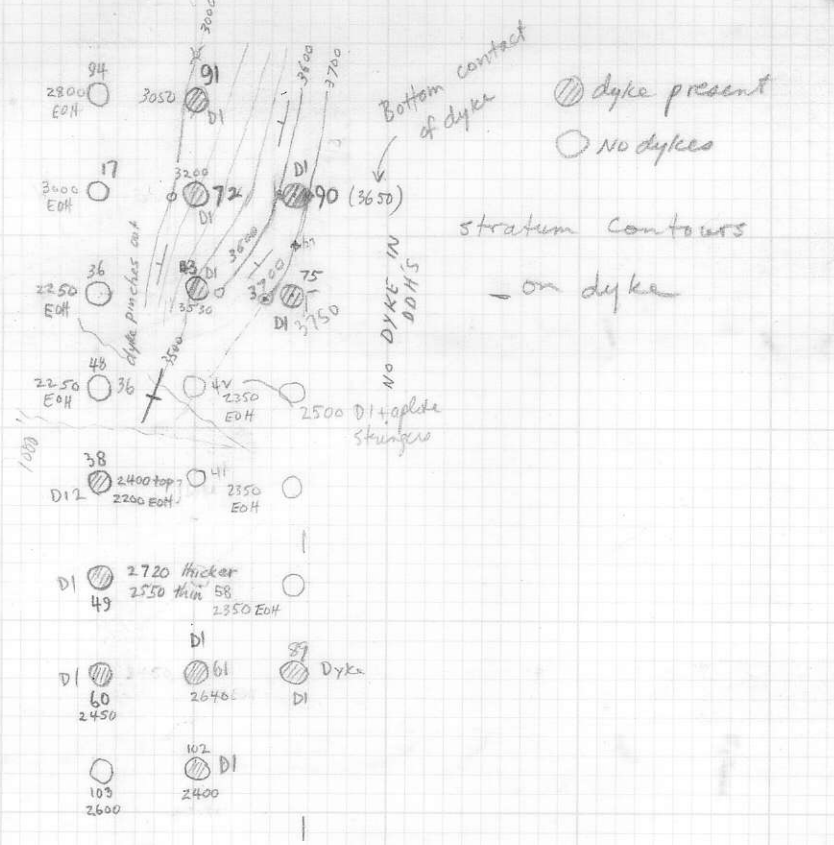
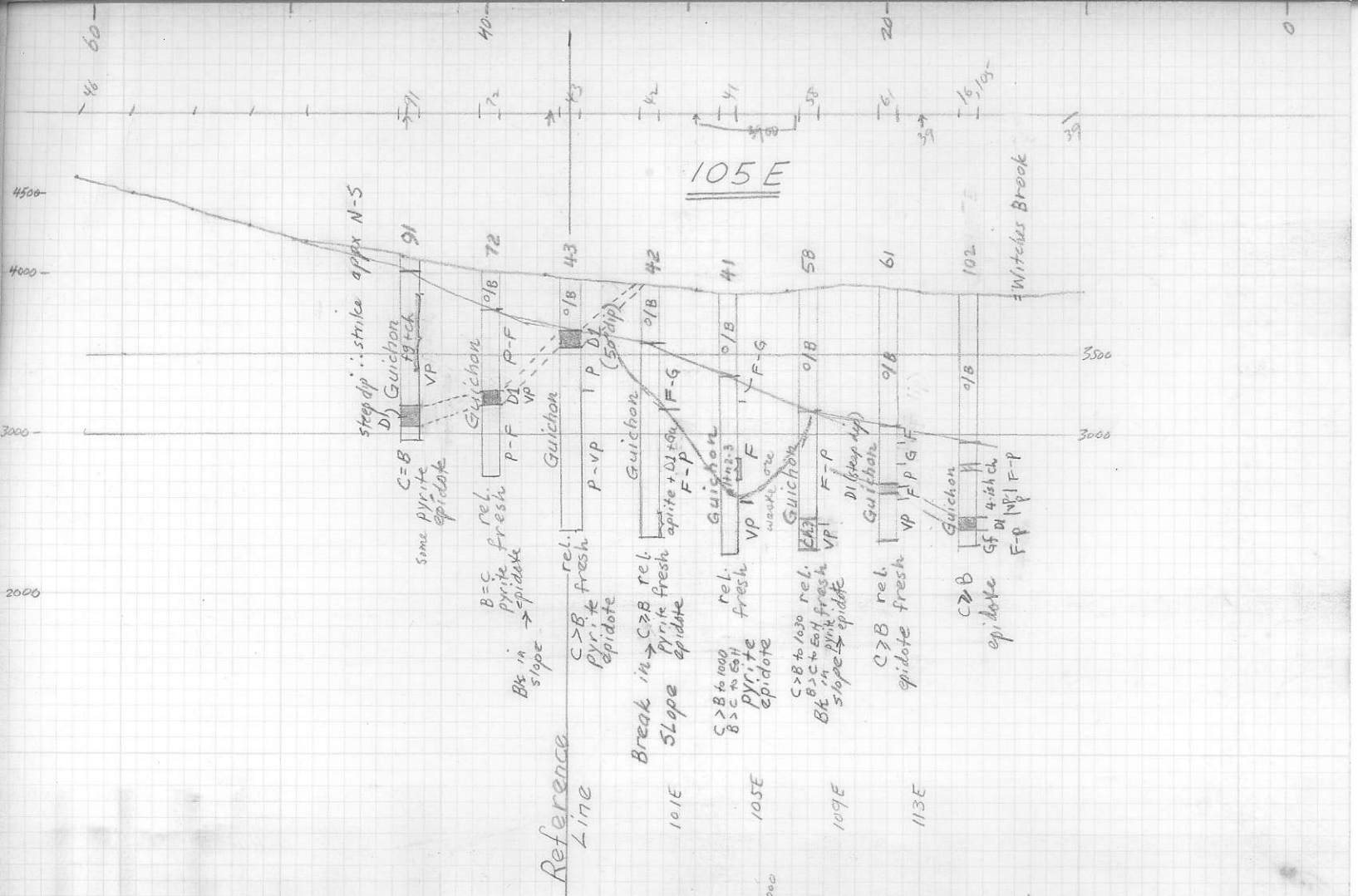




PLAN

400 scale





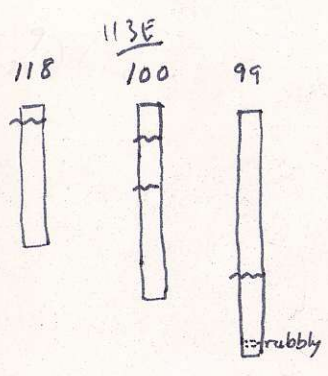
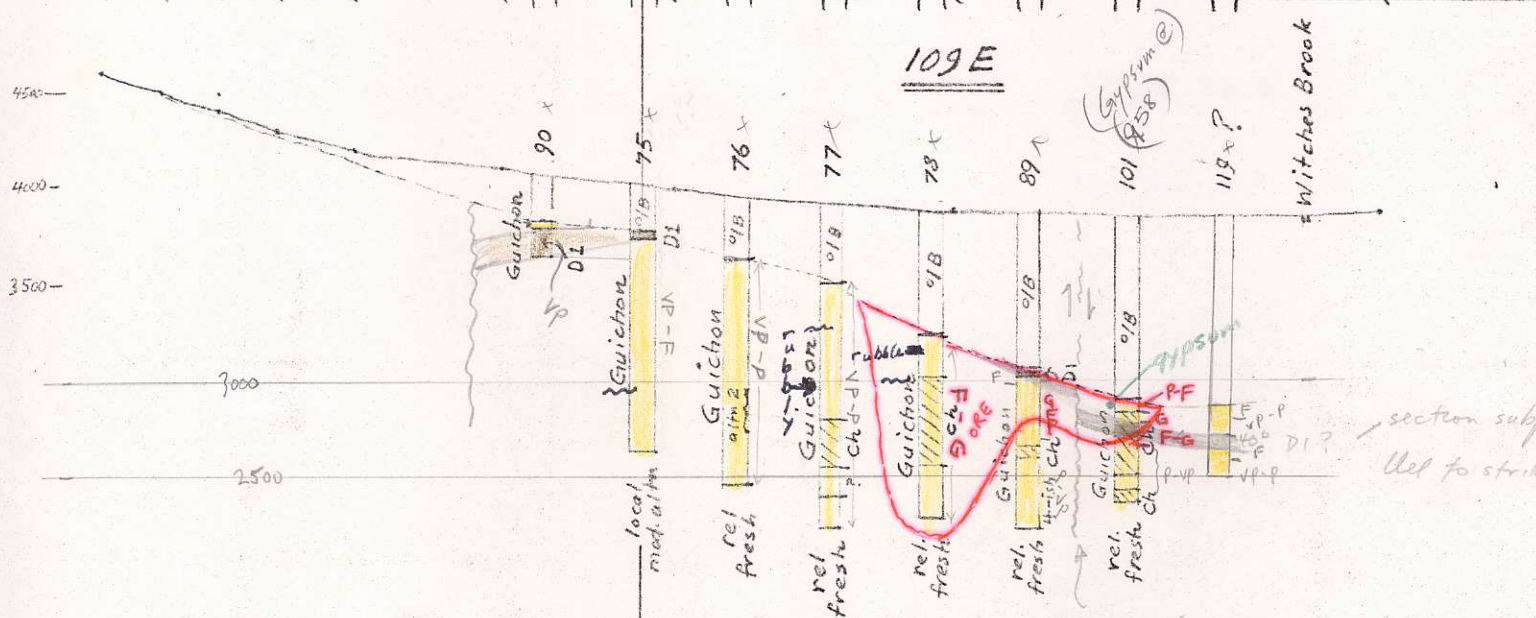
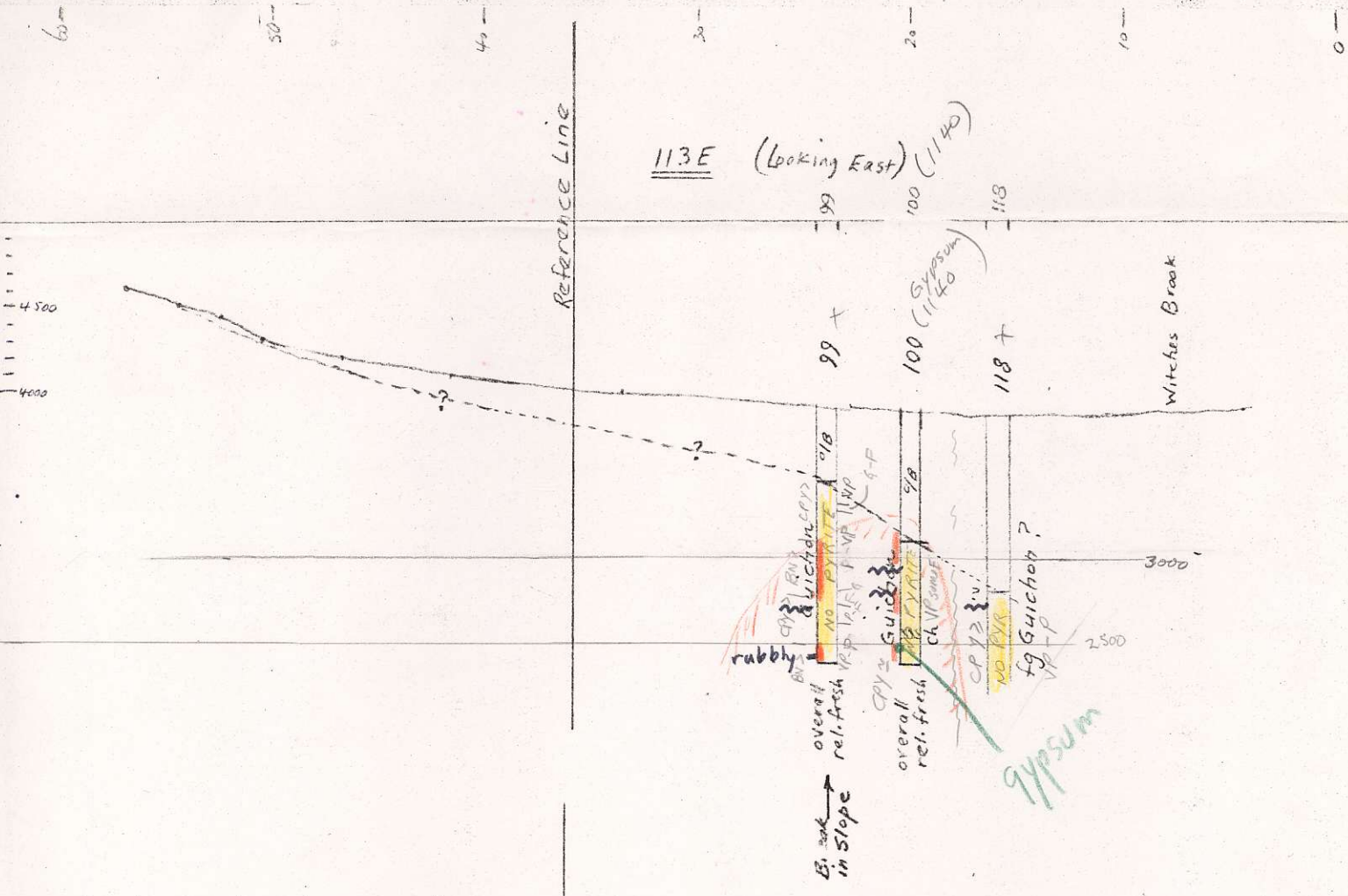
PLAN

1000 scale



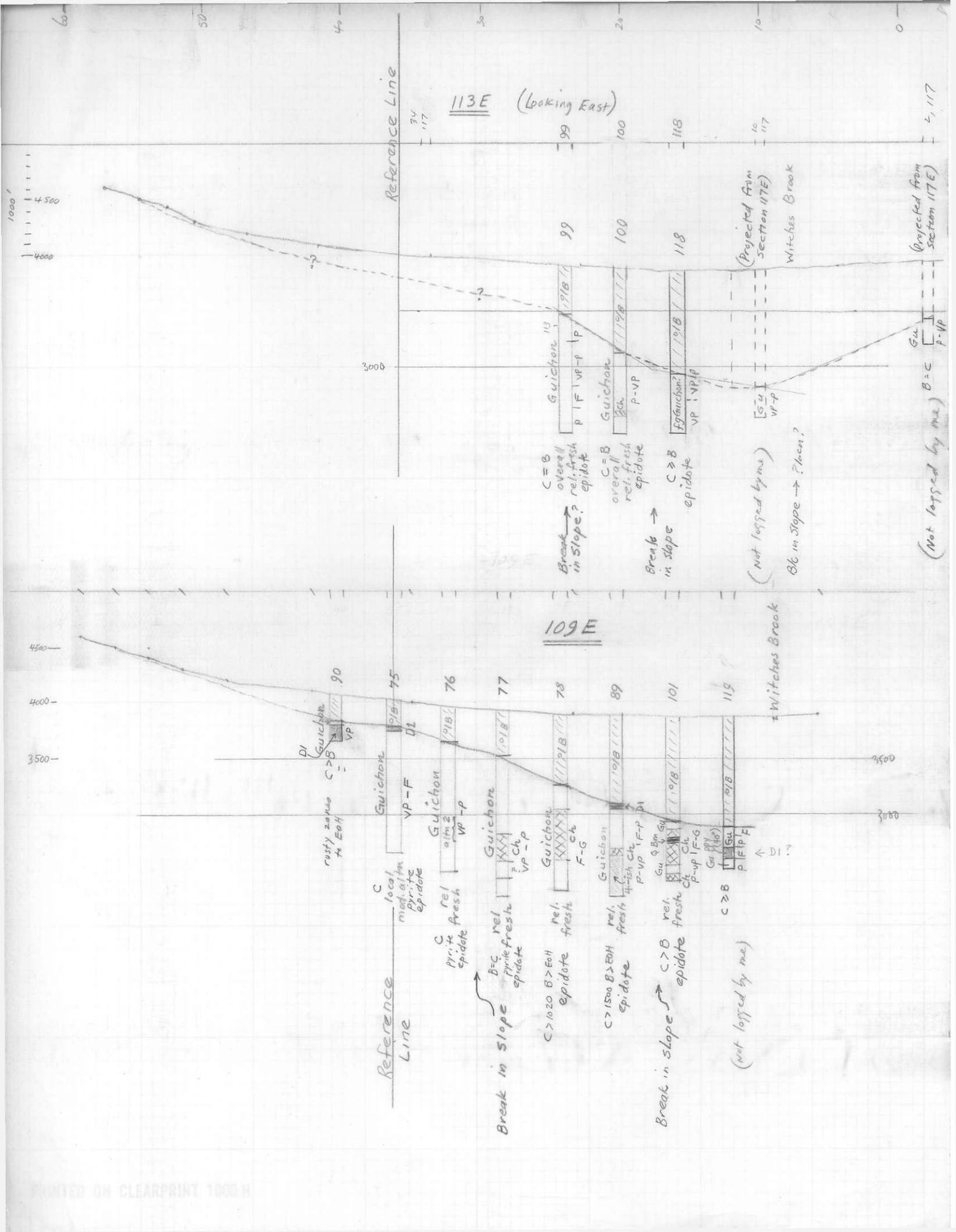


note Chat. distri could be steeply inclined - don't know strike!



113 Gu  
117 Gu

section subparallel to strike



113E (Looking East)

Reference Line

3000

99 Guichon 13  
P | F | VP | P | P  
C = B  
overall  
rel. fresh  
epidote  
Break in slope?

100 Guichon  
Sch  
P-VP  
C = B  
overall  
rel. fresh  
epidote

118  
f? Guichon? 13  
VP | VP | P  
C > B  
epidote  
Break in slope

(Projected from section 117E)  
Witches Brook

(Projected from section 117E)  
Gu  
P-VP

(Not logged by me) B=C

109E

Reference Line

C local  
mod. altn  
pyrite  
epidote

rusty zone  
A EOH  
C > B  
Guichon  
VP

90 Guichon  
VP

75 Guichon  
VP-F  
D1

76 Guichon  
altn 2  
VP-P

77 Guichon  
1018  
Ch  
VP-P

78 Guichon  
F-G  
Ch

89 Guichon  
1018  
P-VP | F-P | D1

101 Gu  
P-VP | F-G  
Ch  
P-VP | F-G

119 Gu  
P | F | P | F  
D1?

Witches Brook

Break in slope  
B=C  
rel.  
pyrite  
epidote

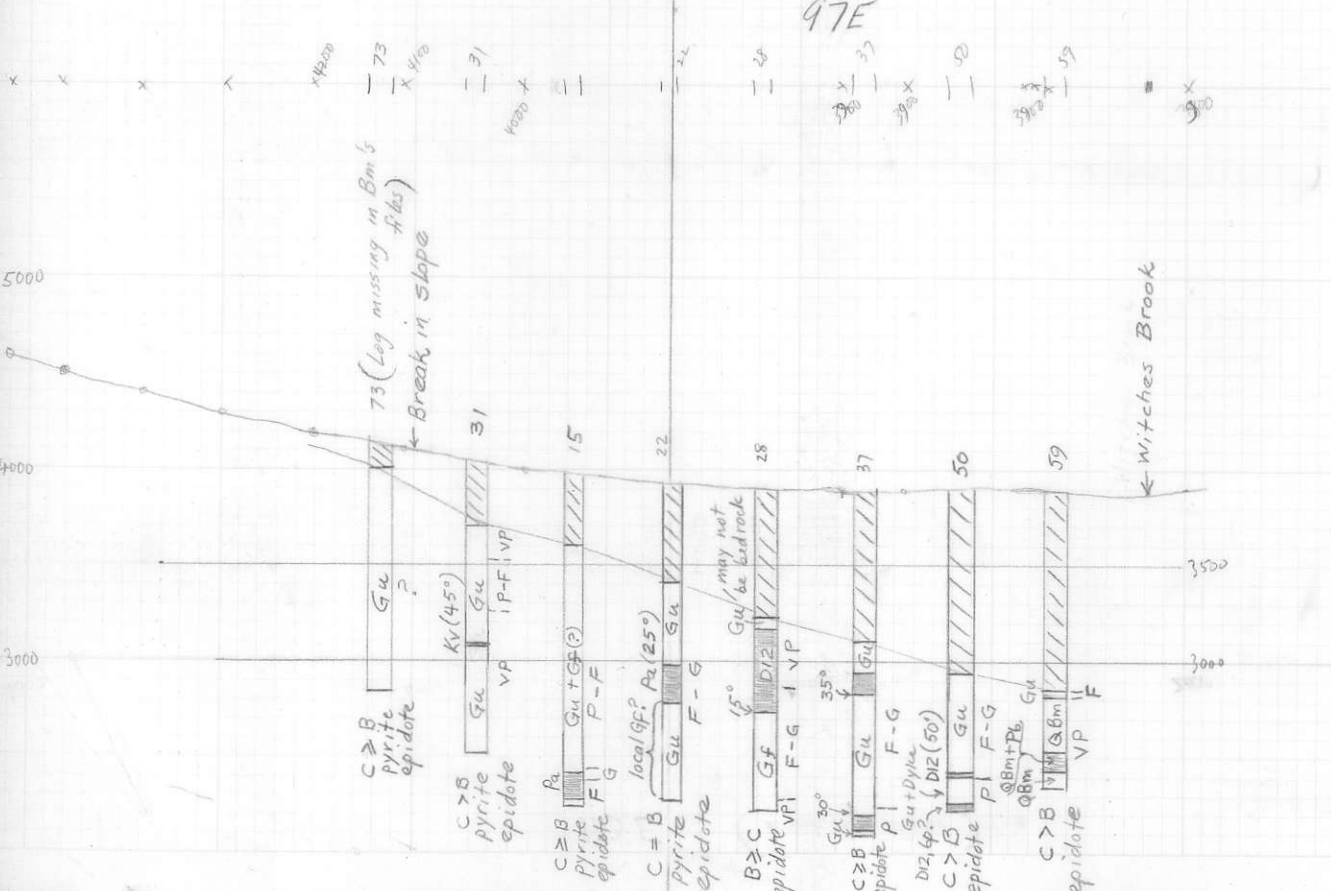
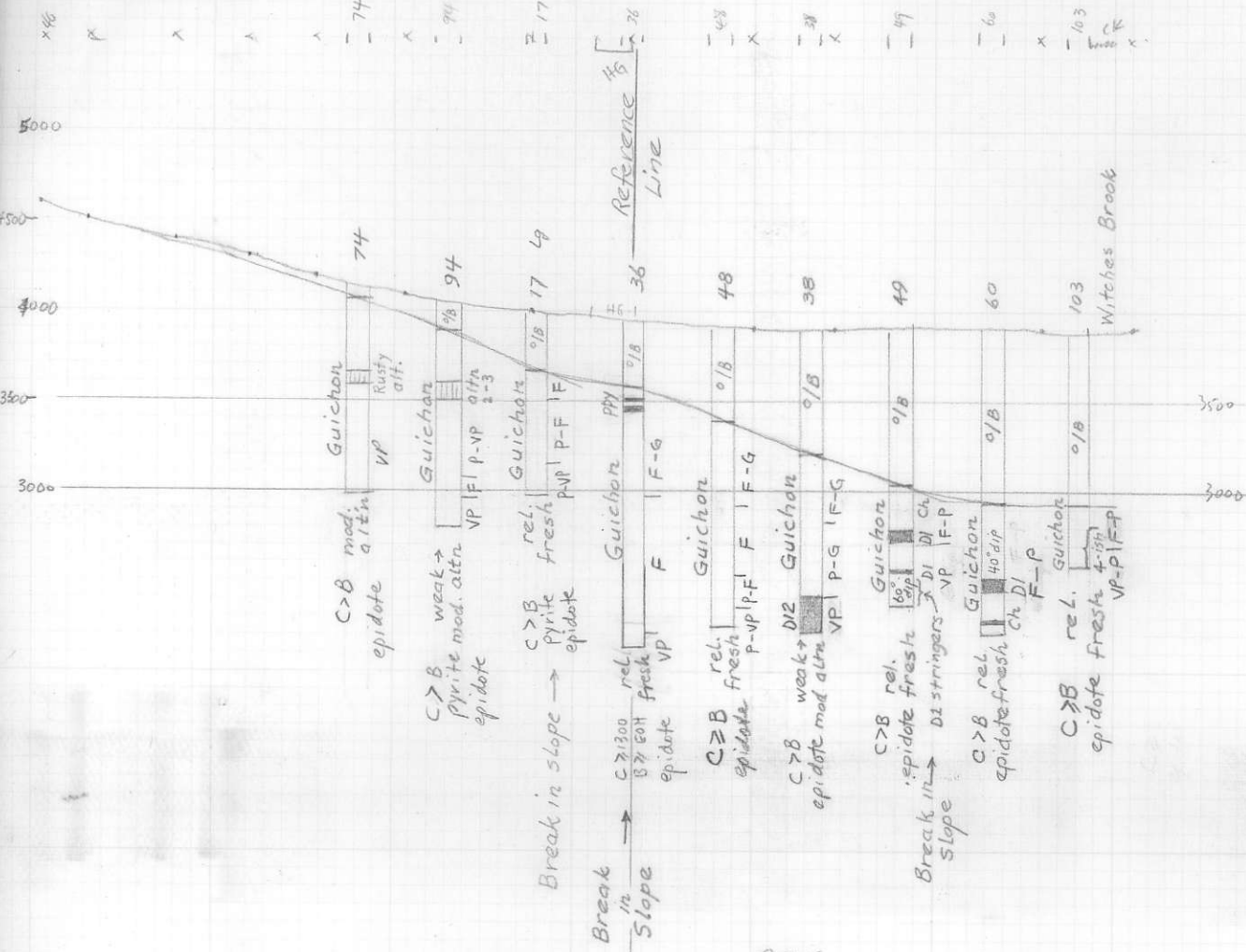
C > 1020 B > EOH  
epidote  
fresh

C > 1500 B > EOH  
epidote  
fresh

Break in slope  
C > B  
epidote  
fresh

(not logged by me)

101E





5000  
4000  
3000

63 Bm P-VP  
C > B Pyrite epidote

109 Q.Bm Gu P  
C > B Pyrite epidote VP

53 Q.Bm VP F-P  
C > B Pyrite epidote VP

13 Q.Bm P-F F  
C > B Pyrite epidote P-F F

7A Q.Bm F, G-F, F  
C > B Pyrite epidote F, G-F, F

21 Q.Bm F, P, G  
C > B Pyrite epidote F, P, G

26 Diz VP P F G  
C > B Pyrite epidote VP P F G

39 6P VP F P  
C > B Pyrite epidote VP F P

← Break in slope (slight)

← Witches Brook

Ref. line

85E

Pyrite + Bm don't occur together here is the generally true?

(Assibly 6p)

109 4000

92 4000

20

10

23

27

81E

87

7900

5000

4000

3000

108

92

54

20

10

23

27

87

← Break in slope

← Witches Brook

Diz or pink altm?

Dizdykes? all porphyry?

A few thin dykes?

Some Diz, 6p? check paragon

4N 81E

X/ 4000



5000  
4000  
3000

108 Q.Bm VP-P  
C > B Pyrite epidote

92 Q.Bm P  
C > B Pyrite epidote

54 Q.Bm-lac Diz P-F  
C > B Pyrite epidote

20 Q.Bm F-P  
C > B Pyrite epidote

10 Q.Bm F, G-F  
C > B Pyrite epidote

23 6P Diz F, P, F, G  
C > B Pyrite epidote

27 Diz 6P VP P F F  
C = B VP P P F

87 6P F P VP  
C > B Pyrite epidote P-VP

← Break in slope

← Witches Brook

Ref. line

81E

87

7900

5000

4000

3000

Diz or pink altm?

Dizdykes? all porphyry?

A few thin dykes?

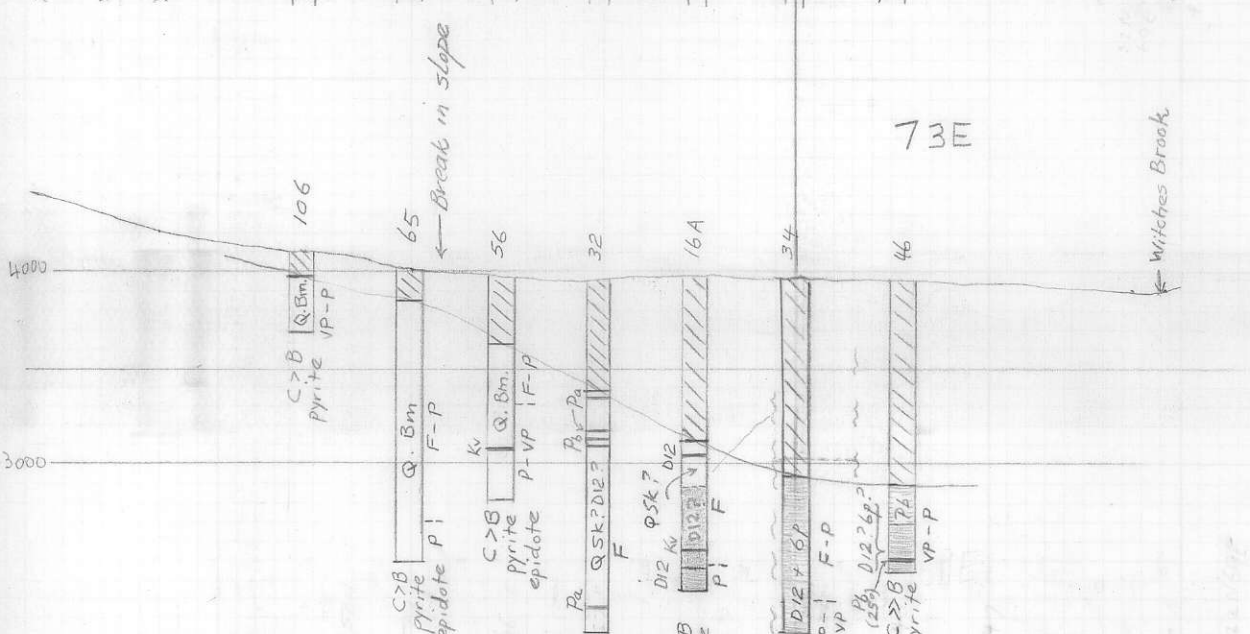
Some Diz, 6p? check paragon

4N 81E

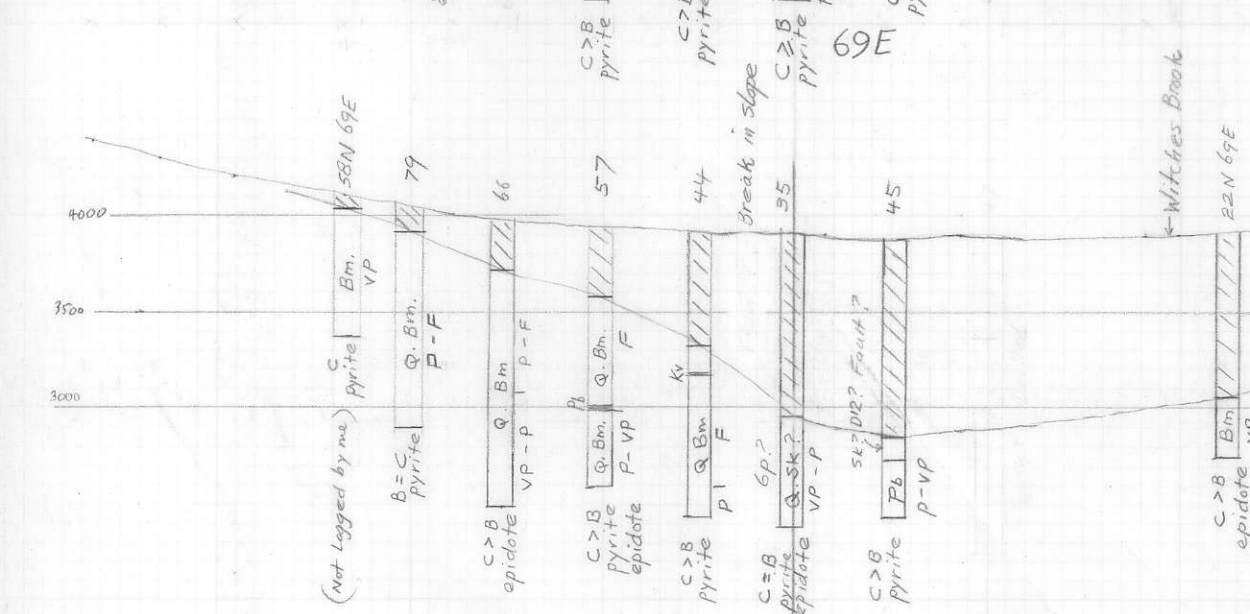
X/ 4000



77E



73E



69E

ref line sled be  
than 45