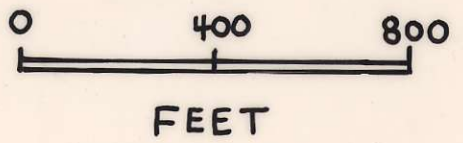
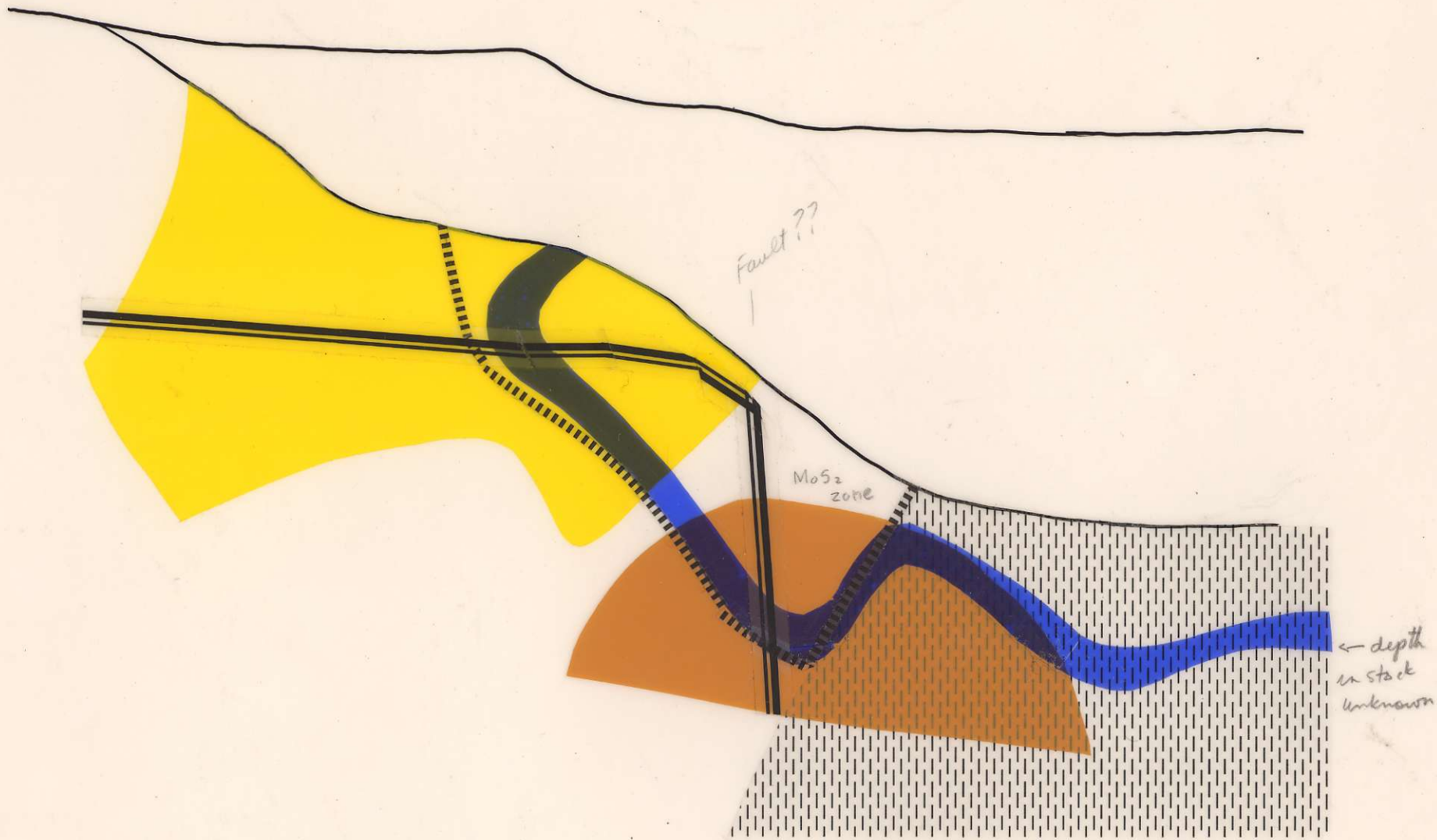


J.A.
89E

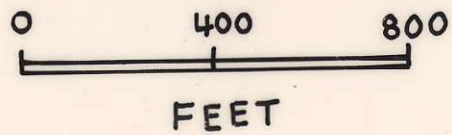
- POTASSIC ALTERATION
- EPIDOTE AND ZEOLITE



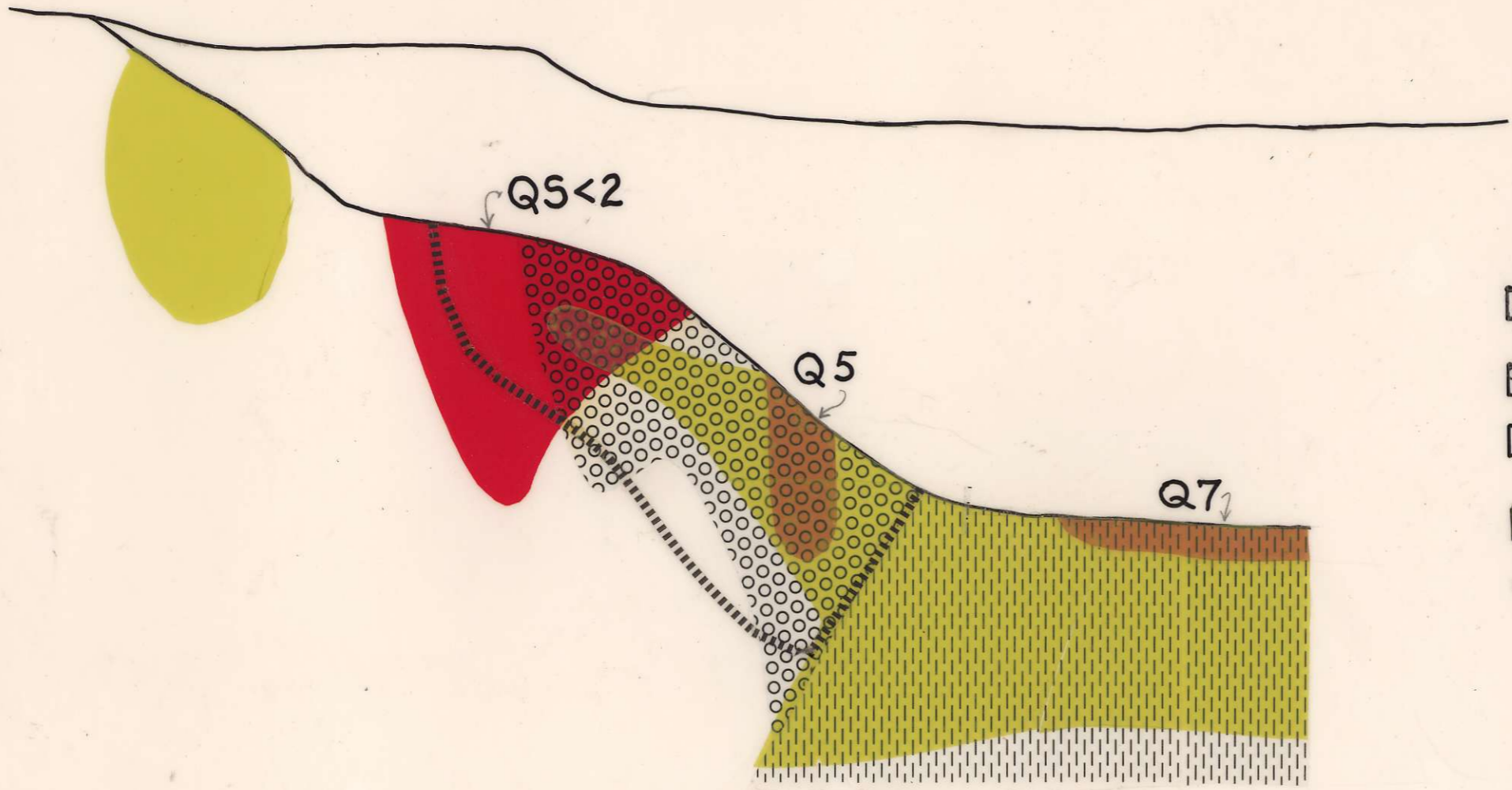
J.A.
89E





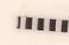


- ore outline
- BN ≥ CPY
- MoS₂
- PYRITE
- GYP SUM
below the line



J.A.
SECTION 89E
LOOKING EAST



-  PORPHYRY
-  QUARTZ-EYE BETHLEHEM
-  GUICHON
-  MOD.-INTENSE ALTERATION
-  ORE BOUNDARY

0 400 800
FEET