

①

1"=2000'



OLD HIGHWAY

"DAM"

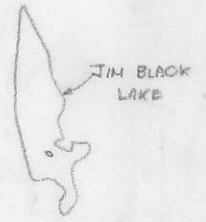
PURKAYST CR

59.0

58.57

enlarge this

to this



896473

Mines

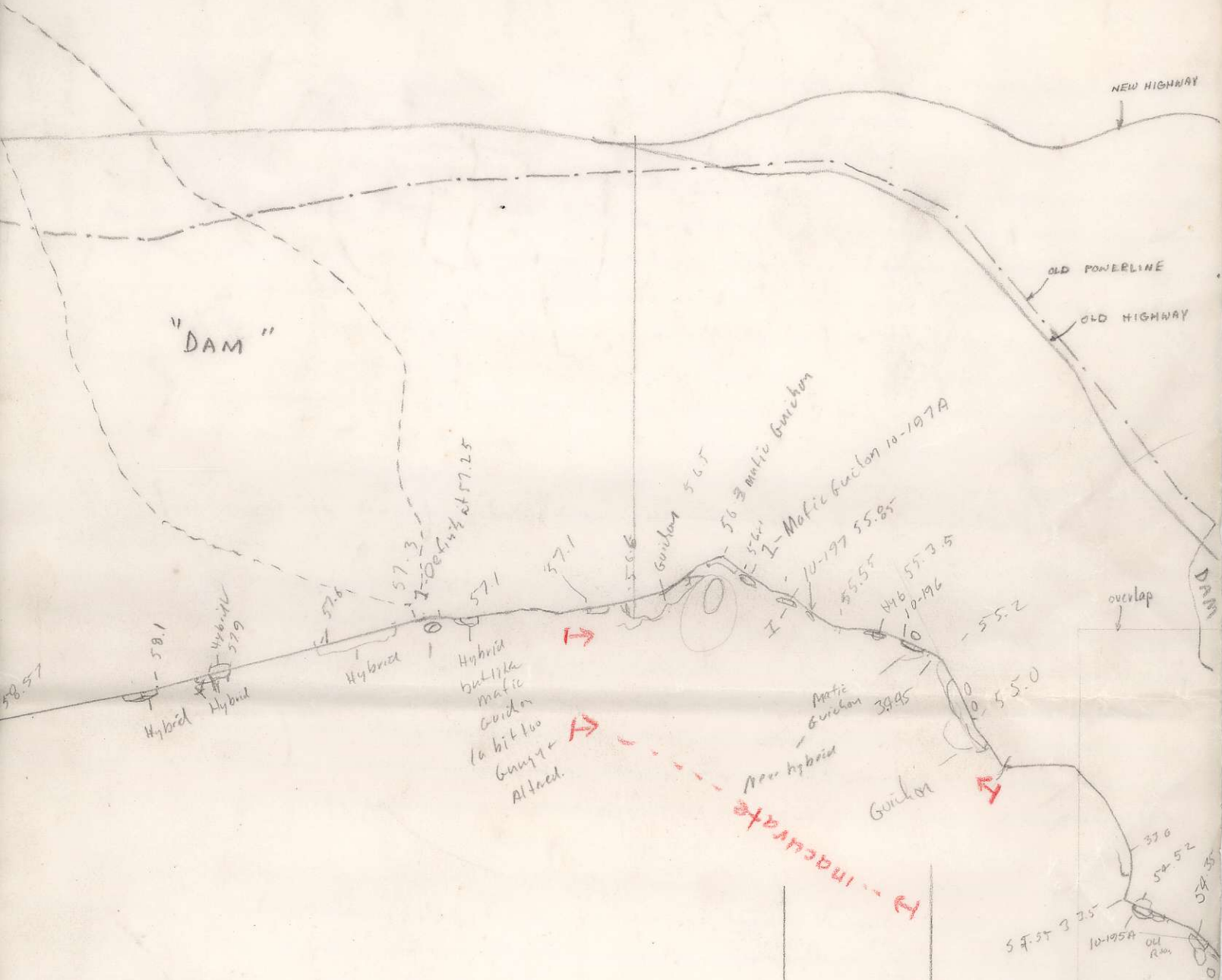
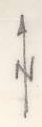
W. J. Mc Millan

100,000'

50,000'

1" = 2000'

(2)



105,000 N

Mines W. J. McMillan

80,000 E

DAM

1" = 2000'

3



OLD POWER LINE

NEW HIGHWAY

OLD HIGHWAY

DAM

TWENTY-FOUR MILE LAKE

37.75
still mostly Malouin
bit of Gouchan

10-195

10-194-A

Chalau
Chalpe
53.98

Chalau
32.71
10-194
Bechehen
33.8

Mostly Chalau
some t

power line

4+2

Chalau
10-194

Chalau
32.1

31.94

10-193A

10-193

31.85

316

314

317

52.8

10-C

31.23

52.61

10-194

Old road
31.14 Down
52.5 MC
35

52.23-KV - (10-B)
10-B
10-A

Tranquille Rubble

52.1

Atalbi prop

51.73

51.65

KV

ALVIN RD.

51.75

115' ats

15635

Bipby KV end of the 51375
power line.

From x on
is a green pebble cal
Fragments of quartz + Bathsaida
Tranquille? or Pleist

Mines

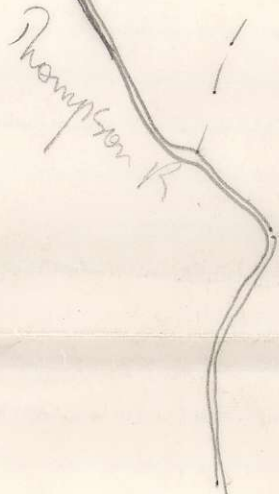
W. J. McMillan

95,000 N

CL. at 119
 CL. at 191 - Black matrix play pay

2880 → 2900
 2877.

- B_g - Basalt
 - B_{py} - Black matrix play pay
 - CL - cooked sediments
- Hybrid



Lovex Pipeline

